



# Electric-current Neutralization, Magnetic Shear, and Eruptive Activity in Solar Active Regions

Yang Liu<sup>1</sup> , Xudong Sun<sup>1</sup> , Tibor Török<sup>2</sup> , Viacheslav S. Titov<sup>2</sup> , and James E. Leake<sup>3</sup>

<sup>1</sup>W. W. Hansen Experimental Physics Laboratory, Stanford University, Stanford, CA 94305-4085, USA

<sup>2</sup>Predictive Science Inc., 9990 Mesa Rim Road, Suite 170, San Diego, CA 92121, USA

<sup>3</sup>NASA Goddard Space Flight Center, Greenbelt, MD 20771, USA

Received 2017 July 6; revised 2017 August 8; accepted 2017 August 13; published 2017 August 29

## Abstract

The physical conditions that determine whether or not solar active regions (ARs) produce strong flares and coronal mass ejections (CMEs) are not yet well understood. Here, we investigate the association between electric-current neutralization, magnetic shear along polarity inversion lines (PILs), and eruptive activity in four ARs: two emerging and two well-developed ones. We find that the CME-producing ARs are characterized by a strongly non-neutralized total current, while the total current in the ARs that did not produce CMEs is almost perfectly neutralized. The difference in the PIL shear between these two groups is much less pronounced, which suggests that the degree of current neutralization may serve as a better proxy for assessing the ability of ARs to produce CMEs.

**Key words:** Sun: corona – Sun: coronal mass ejections (CMEs) – Sun: flares – Sun: magnetic fields

## 1. Introduction

It is well established that solar flares and coronal mass ejections (CMEs) are powered by the free magnetic energy stored in volumetric electric currents in the corona, predominantly in active regions (ARs). However, it remains unclear how well these currents are *neutralized*. Full neutralization requires the “direct” coronal currents that connect the AR polarity centers to be surrounded by “return” currents of equal total strength and opposite direction, i.e., the total current has to be zero not only for the whole AR (which is always approximately the case for well-isolated ARs), but also for each polarity individually. Parker (1996) suggested that ARs are comprised of small, magnetically isolated flux tubes that are individually current-neutralized, so that a whole AR must be neutralized as well. Melrose (1991, 1995), however, argued that net (non-neutralized) currents can emerge from the solar interior with the emergence of magnetic flux. Longcope & Welsch (2000) devised a simplified model of flux-tube emergence that suggests that most return currents are trapped below or at the photosphere, and Wheatland et al. (2000) found most of the 21 ARs he studied to be non-neutralized; both works support Melrose’s scenario. However, even under the assumption that the total current in an AR is organized essentially in the form of a single coronal flux rope, it is still often hypothesized that the current has to be neutralized since it is formed by localized flows and/or the emergence of a neutralized sub-photospheric flux rope (see Török et al. 2014).

The distribution of direct and return currents in ARs may be relevant for their ability to produce CMEs (Forbes 2010). The existence of non-potential magnetic fields prior to CMEs, indicated for instance by magnetic shear along polarity inversion lines (PILs; e.g., Mackay et al. 2010), implies the presence of an electric current that is likely concentrated in a relatively narrow channel above the PIL, presumably in the form of a flux rope, embedded into an approximately potential magnetic field. The equilibrium and stability properties of such a flux rope depend largely on the “hoop force,” referred to as a unit length of the rope. The hoop force is a “self-force” that

solely originates from the interaction of the current elements in the rope with one another. In equilibrium, this force is counterbalanced by the additional interaction of the current elements with the ambient magnetic field, which in this case plays the role of a “strapping” field. A first-order term of expansion in  $a/R_c$ , where  $a$  is the cross-sectional radius and  $R_c$  the axis-curvature radius of the rope, shows that the hoop force is proportional to the square of the total current (Zakharov & Shafranov 1986), which, in turn, is an algebraic sum of direct and return currents. Thus, at least in this approximation, the hoop force vanishes for current-neutralized flux ropes. Under the assumption that ARs have to be current-neutralized, it is therefore sometimes argued that mechanisms that invoke the hoop force, such as the torus instability (Kliem & Török 2006), cannot play a role in the development of CMEs.

However, in order to alter the hoop force to a point that deviations from equilibrium are inhibited, the return current likely has to be organized in a coherent and compact manner around the direct-current channel (Forbes 2010). As we shall see, this does not seem to be the case for real ARs. Moreover, magnetohydrodynamic (MHD) simulations of coronal flux-rope formation by photospheric vortex flows showed that current neutralization only occurs if the vortices are relatively far away from the PIL. If they are close enough to produce magnetic shear along the PIL, the direct and return currents become imbalanced, and net currents develop around the PIL (Török & Kliem 2003; Dalmasse et al. 2015). Simulations of the emergence of a current-neutralized flux rope into the corona show a similar effect: significant PIL shear develops, and the flux-rope-current becomes non-neutralized (Török et al. 2014). In both cases, the hoop force in the coronal flux rope does not vanish and unstable deviations from equilibrium leading to CMEs become possible.

These theoretical considerations suggest a relationship between the degree of current neutralization, the amount of PIL shear, and the eruptive activity of ARs, which has not yet been explored systematically using real data. Observationally, the distribution of direct and return currents can be inferred from photospheric vector magnetograms by calculating the

vertical current density. Venkatakrishnan & Tiwari (2009) and Gosain et al. (2014) considered isolated sunspots, which were found to be well neutralized in most cases. For ARs, neutralized currents were found in one quiet region (NOAA AR 10940; Georgoulis et al. 2012), and strong net currents were found in two highly eruptive regions (ARs 10930 and 11158; Ravindra et al. 2011; Georgoulis et al. 2012; Petrie 2013; Janvier et al. 2014; Vemareddy et al. 2015), which supports the aforementioned simulation results.

Here, we carry out a pilot study to explore the aforementioned relationship. We investigate four ARs, two of which produced CMEs. In order to make our small sample as representative as possible, we consider two emerging and two well-developed ARs. We describe our data processing and the computation of the relevant quantities in Section 2. In Section 3, we present our results, which are summarized and discussed in Section 4.

## 2. Data and Calculations

### 2.1. Data

We consider a representative sample of two emerging and two well-developed ARs, two of which produced CMEs. The emerging regions are AR 11158 and AR 11072; the developed regions are AR 11429 and AR 12192. AR 11072 is a simple bipolar region that did not produce flares larger than C-class during its disk passage (Liu & Schuck 2012). In contrast, the complex ARs 11158, 11429, and 12192 were very active (e.g., Sun et al. 2012; Wang et al. 2012; Aschwanden et al. 2014; Liu et al. 2014; Sun et al. 2015; Thalmann et al. 2015). AR 11158 produced three M3 flares or larger, including one X2.2 flare. AR 11429 produced seven M3 flares or larger, including three X-class flares. All these flares were associated with CMEs. On the other hand, AR 12192 produced 17 M3 flares or larger during its disk passage, including 6 X-class flares, but no CMEs were detected to originate from the flare-productive core region of the AR.

We use the *Solar Dynamics Observatory's* (SDO; Pesnell et al. 2012) Helioseismic and Magnetic Imager (HMI; Scherrer et al. 2012; Schou et al. 2012) vector magnetic field data (Hoeksema et al. 2014) to calculate the electric-current distribution and the PIL magnetic shear for our ARs.

### 2.2. Calculation of Current Neutralization

For each AR, the vertical electric-current density,  $J_z = \mu_0^{-1} \left( \frac{\partial B_y}{\partial x} - \frac{\partial B_x}{\partial y} \right)$ , is derived from the processed HMI vector magnetic field data. The direct (DC) and return (RC) currents are computed for each polarity by integrating  $J_z$  values of a different sign separately. In order to associate the correct sign of  $J_z$  to the DC (and hence to the RC), we search for the dominant sign of  $J_z/B_z$  in the polarity centers and in the vicinity of the PIL, above which the direct-current channel is assumed to reside. For ARs 11158 and 11429 the association is very clear, while for ARs 11072 and 12192 it is not. However, as we will show, the quantity relevant for our investigation,  $|DC/RC|$ , is close to unity for the two latter ARs, making the choice of the sign of  $J_z$  interchangeable.

Complex ARs typically contain significant non-eruptive flux that is irrelevant for our investigation. Such flux may connect to other polarities of the region, to neighboring ARs, or to remote areas on the Sun. Thus, to select the integration area for

complex ARs, we employ a combination of nonlinear force-free field (NLFFF) extrapolations (Wiegmann 2004) and photospheric maps of the squashing factor  $Q$  (Titov 2007; Titov et al. 2011).

As an example, Figure 1 shows the obtained integration area for AR 11158. Only the inner polarity pair of this quadrupolar AR is shown, as the outer polarities were not involved in the region's eruptive activity (Sun et al. 2012). We first calculate  $Q$  at the lower boundary using an NLFFF model. While the pattern of  $Q$  is complicated, one can identify an elongated patch encircled by high- $Q$  contours. By tracing field lines along this contour, we see that it outlines the boundary of the closed flux connecting the polarities. We then manually extract a slightly larger region and trace field lines from each pixel; those with end points outside of the region are eliminated. Therefore, all remaining field lines close within the region. To obtain the final integration area, we apply two common morphology operators, dilation and erosion, to the input image, in order to remove noise, isolate individual elements, and join disparate elements. The final integration area covers most of the polarities, yet excludes significant flux, especially in the positive polarity. The resulting  $|DC/RC|$  ratios are  $|DC/RC|^+ = 2.376 \pm 0.045$  and  $|DC/RC|^- = 3.475 \pm 0.099$ , respectively. The errors are estimated from the uncertainties of the vector magnetic field data (Hoeksema et al. 2014). For comparison, the ratios obtained from the whole area shown in Figure 1 are  $|DC/RC|^+ = 1.997 \pm 0.030$  and  $|DC/RC|^- = 2.339 \pm 0.046$ , which demonstrates that  $|DC/RC|$  can significantly increase if the irrelevant flux is excluded.

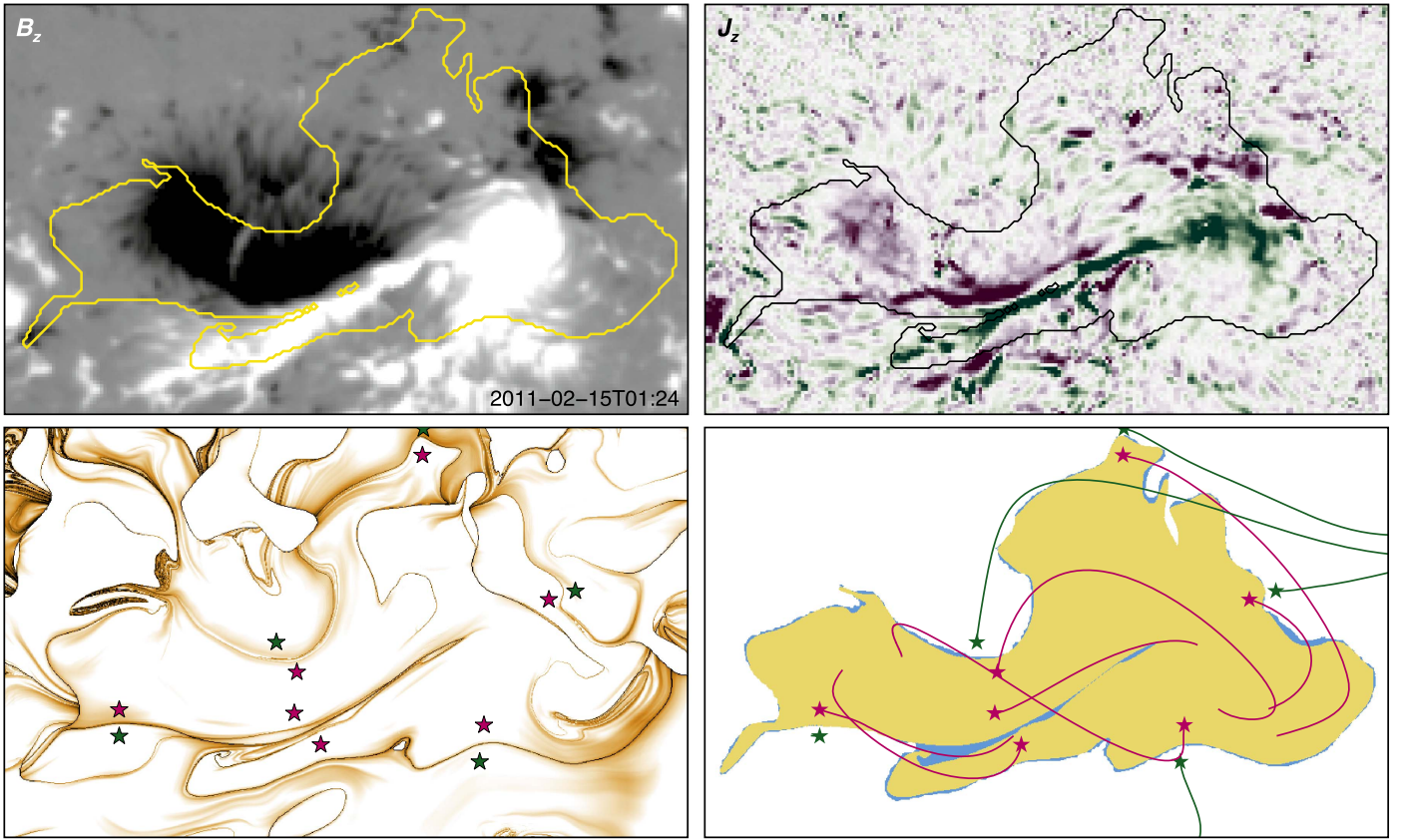
### 2.3. Calculation of PIL Magnetic Shear

In order to estimate the magnetic shear along the main PIL of an AR, we calculate the average magnetic shear angle,  $\Phi$ , at and around the PIL. To this end, we first locate the PIL in the integration area for each vector magnetogram. The pixels on the PIL are set to be 1; the remaining pixels are set to 0. The PIL is then expanded by dilating a  $3 \times 3$  element. The resulting image includes non-zero pixels at and around the PIL and zero pixels everywhere else. We then use this mask to compute  $\Phi$ , by averaging the shear over all non-zero pixels where the field strength is larger than 300 G, which is  $3\sigma$  of the vector magnetic field data noise (Hoeksema et al. 2014). The shear for each pixel is calculated following previous studies (Hagyard et al. 1984; Wang et al. 1994), which defined it by the angle between the horizontal components of the observed field and a potential field that is computed from the observed vertical field using Fourier transforms (Alissandrakis 1981; Gary 1989).

## 3. Results

### 3.1. Two Emerging ARs

We first analyze the two emerging ARs for a time period of six days, which covers the entire emerging process and some evolution afterward. Figure 2 shows the ARs, together with a flux-emergence simulation (Leake et al. 2013) that includes an existing, arcade-like coronal magnetic field, for comparison. AR 11072 is a simple bipolar region, which emerges quickly within two days and evolves slowly afterward.  $|DC/RC|$  remains close to unity during the evolution, i.e., the currents remain almost perfectly neutralized. No clear large-scale, coherent current pattern develops. Rather, the direct and return currents are mostly distributed in small, alternating patches (see



**Figure 1.** Top: maps of  $B_z$  (left) and  $J_z$  (right) for AR 11158 shortly before the X2.2 flare, with the  $J_z$ -integration area shown as contours.  $B_z$  is scaled to  $\pm 1000$  G,  $J_z$  to  $\pm 44$  mA cm $^{-2}$ . Green (purple) colors show positive (negative) values of  $J_z$ . Bottom: identification of the integration area. Left: Q-map at the lower boundary based on an NLFFF model. Dark lanes are high-Q contours. Pairs of stars indicate magnetic-connectivity boundaries. Pink (green) stars are field-line foot-points that close within the core region (connect to the outer AR polarities or remote areas). Right: the yellow region shows the final area; the cyan regions show pixels that were removed from the initially extracted region. Selected field lines are shown to illustrate the connectivities.

also Cheng & Ding 2016). In contrast, AR 11158 has a complex quadrupolar magnetic configuration. The region is still emerging at the end of our six-day observation period. As mentioned above, only the inner polarity pair is relevant here. After the onset of flux emergence,  $|\text{DC}/\text{RC}|$  becomes significantly larger than unity, i.e., the AR becomes strongly non-neutralized (cf. Janvier et al. 2014). As for AR 11072, patches of alternating direct and return current develop. However, now an organized, double-J-shaped pattern of strong direct currents also forms around the PIL, in very good agreement with the MHD simulation. Analyzing this simulation, Török et al. (2014) found that, as the rising flux temporarily halts before it breaches the photosphere, most of the return current is pushed aside by the subjacent direct current and remains trapped below the surface.

We use two data sets per day, 12 hr apart, to calculate the magnetic shear for a five-day time period after the ARs began to emerge. The daily averages are listed in Table 1, together with the daily averages of  $|\text{DC}/\text{RC}|$ . The PIL shear is much stronger in AR 11158 than in AR 11072. The average shear angle is  $\Phi = 63.6 \pm 6.9$  for AR 11158, compared to only  $\Phi = 25.1 \pm 6.4$  for AR 11072.

### 3.2. Two Well-developed ARs

Figure 3 shows the two developed ARs. As before, we analyze the evolution for a five-day period, but use only one data set per day because, unlike emerging ARs, developed ARs evolve much more slowly and one data set per day is sufficient

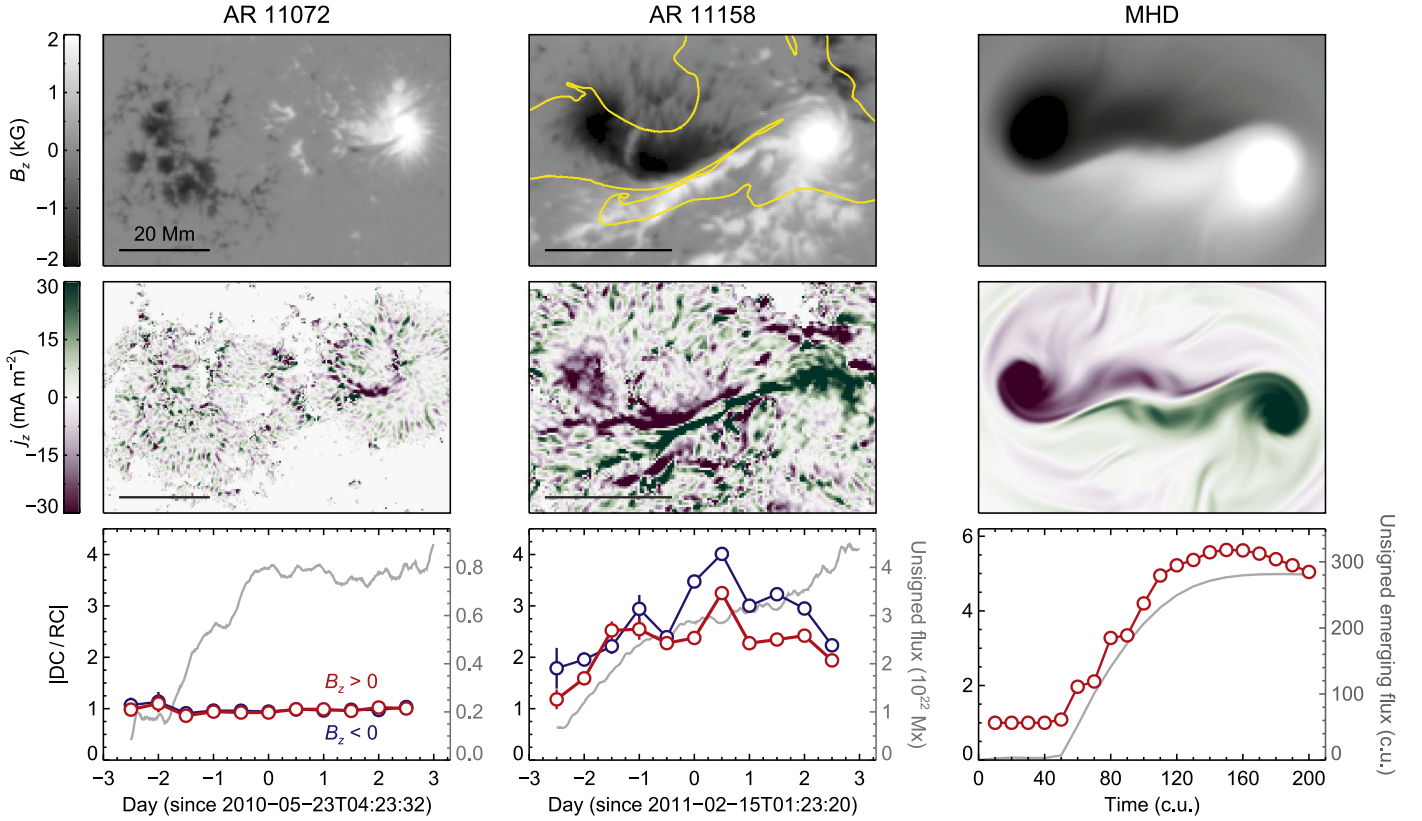
for the purpose of this study. Both ARs were near the central meridian on the third day of this period (*N17S03* at 00:00 UT on 2012 March 9 and *S12W01* at 16:00 UT on 2014 October 23 for ARs 11429 and 12192, respectively) and were within  $35^\circ$  from the central meridian on all other days. The yellow (black) dashed line contours show the integration areas within which  $|\text{DC}/\text{RC}|$  is calculated. Although both ARs have complex magnetic configurations,  $|\text{DC}/\text{RC}|$  is significantly larger than unity for AR 11429 during the whole time period, while it remains close to unity for AR 12192 at all times. As for the emerging ARs described in Section 3.1, the current distribution is characterized by small alternating patches of direct and return currents, and the current-neutralized region (AR 12192) does not show a coherent, large-scale pattern of direct current around its PIL, while the non-neutralized region (AR 11429) does (albeit not as pronounced as in AR 11158).

Our measurements of the PIL shear and  $|\text{DC}/\text{RC}|$  are shown in Table 1. The average shear angle of AR 11429 is  $\Phi = 67.4 \pm 8.5$ , almost identical to the value obtained for the likewise CME-producing AR 11158. For AR 12192, we find an average shear angle of  $\Phi = 41.2 \pm 11.3$ , which is significantly larger than for the likewise current-neutralized AR 11072. The five-day averaged values of  $|\text{DC}/\text{RC}|$  for the two regions are  $2.17 \pm 0.01$  and  $1.06 \pm 0.01$ , respectively.

## 4. Discussion

We investigated the possible existence of a relationship between electric-current neutralization, PIL magnetic shear,





**Figure 2.** Left middle:  $B_z$  and  $J_z$  in quiet AR 11072 on 2010 May 23 and in the flare-productive center of AR 11158 on 2011 February 15. No core-region mask was used for the well-isolated, bipolar AR 11072. Bottom panels show the evolution of the unsigned magnetic flux (gray line) and the direct/return current ratio,  $|DC/RC|$ . Red (blue) curves show  $|DC/RC|^+$  ( $|DC/RC|^-$ ). Error bars are  $3\sigma$ , estimated from the inversion uncertainty of the vector magnetic field data (errors smaller than circles are omitted). Right: corresponding quantities for the MHD simulation by Leake et al. (2013).  $|DC/RC|$  is equal for both polarities; only  $|DC/RC|^+$  is plotted. Times and flux are in code units.

**Table 1**  
Magnetic Shear at and around the PIL and Direct/Return Current Ratio for All ARs during Their Disk Passage

AR	Quantity <sup>a</sup>	Day 1	Day 2	Day 3	Day 4	Day 5 <sup>b</sup>	Average <sup>c</sup>
AR 11072	$\Phi$	$37^\circ 6 \pm 22^\circ 8$	$26^\circ 5 \pm 15^\circ 0$	$15^\circ 2 \pm 7^\circ 4$	$18^\circ 7 \pm 11^\circ 7$	$27^\circ 6 \pm 8^\circ 7$	$25^\circ 1 \pm 6^\circ 4$
AR 11158	$\Phi$	$56^\circ 7 \pm 16^\circ 5$	$70^\circ 1 \pm 10^\circ 0$	$70^\circ 1 \pm 13^\circ 8$	$66^\circ 4 \pm 16^\circ 5$	$54^\circ 8 \pm 18^\circ 8$	$63^\circ 6 \pm 6^\circ 9$
AR 11072	$ DC/RC $	$1.0 \pm 0.02$	$0.95 \pm 0.01$	$0.96 \pm 0.01$	$0.97 \pm 0.01$	$1.01 \pm 0.01$	$0.98 \pm 0.01$
AR 11158	$ DC/RC $	$1.63 \pm 0.04$	$2.55 \pm 0.04$	$2.63 \pm 0.03$	$3.13 \pm 0.03$	$2.74 \pm 0.03$	$2.54 \pm 0.02$
AR 11429	$\Phi$	$65^\circ 6 \pm 23^\circ 3$	$70^\circ 5 \pm 17^\circ 3$	$66^\circ 1 \pm 17^\circ 7$	$67^\circ 3 \pm 18^\circ 3$	$67^\circ 8 \pm 17^\circ 8$	$67^\circ 4 \pm 8^\circ 5$
AR 12192	$\Phi$	$33^\circ 4 \pm 23^\circ 9$	$41^\circ 2 \pm 26^\circ 3$	$41^\circ 6 \pm 25^\circ 0$	$44^\circ 6 \pm 25^\circ 6$	$45^\circ 0 \pm 26^\circ 2$	$41^\circ 2 \pm 11^\circ 3$
AR 11429	$ DC/RC $	$2.19 \pm 0.03$	$2.60 \pm 0.03$	$2.23 \pm 0.03$	$1.96 \pm 0.03$	$1.87 \pm 0.02$	$2.17 \pm 0.01$
AR 12192	$ DC/RC $	$1.09 \pm 0.01$	$1.10 \pm 0.01$	$1.09 \pm 0.01$	$1.07 \pm 0.01$	$0.94 \pm 0.01$	$1.06 \pm 0.01$

**Notes.** The top (bottom) two ARs are emerging (well-developed).

<sup>a</sup> Computed quantities.  $\Phi$  is the average magnetic shear angle (in degrees) at and around the PIL;  $|DC/RC|$  the ratio of total direct and return current, where  $|DC/RC| = (|DC/RC|^+ + |DC/RC|^-)/2$ . For the two emerging ARs, the daily values are averaged over two data sets per day.

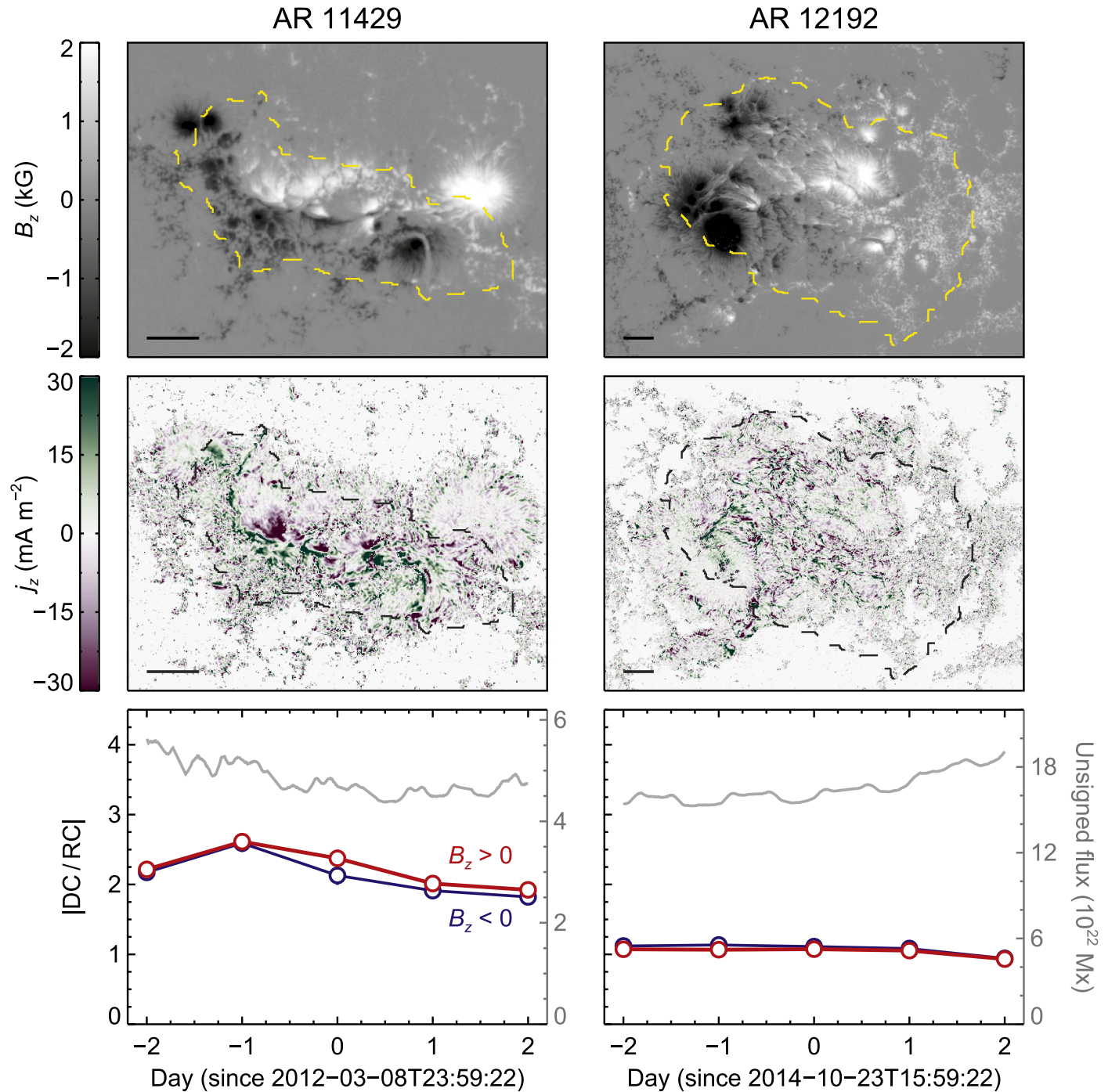
<sup>b</sup> Day of a five-day period when the ARs were visible on the solar disk. The time periods are 2010 May 21–25, 2011 February 13–17, 2012 March 7–11, and 2014 October 21–25 for ARs 11072, 11158, 11429, and 12192, respectively.

<sup>c</sup> Values averaged over the five-day period.

and the eruptive activity of solar ARs. To this end, we considered a sample of four ARs, including emerging and well-developed ones, as well as quiet and eruptive ones. Using HMI vector magnetic field data, we obtained the electric-current distribution, measured the magnetic shear along the main PIL, and tracked eruptive activity over a time period of 5–6 days for each AR. Table 2 shows an overview of the AR properties

relevant for our investigation. Our results can be summarized as follows.

(1) No AR showed signatures of a coherent pattern of return current that would surround a central direct current, as is often assumed in theoretical considerations (see Section 1). Rather, the return currents were distributed in small patches, alternating with neighboring patches of direct current. On the other hand,



**Figure 3.** Same as Figure 2, but for the flare-productive centers of AR 11429 on 2012 March 9 (left) and AR 12192 on 2014 October 23 (right). Dashed-line contours enclose the core-region masks within which  $|DC/RC|$  is computed.

two ARs had an organized pattern of direct current, which manifests itself as an elongated, double-J-shaped structure bracketing the PIL.

(2) The most striking differences can be found between the ARs that produce CMEs and those that do not. The two CME-producing ARs (one emerging, one developed) are characterized by  $|DC/RC|$  values clearly exceeding unity<sup>4</sup>, the presence

of a double-J-shaped direct-current channel around the PIL and an almost identical PIL shear of about 65°. In contrast, the ARs that did not produce CMEs (one emerging, one developed) were characterized by  $|DC/RC| \approx 1$ , i.e., almost perfect current neutralization, the absence of a direct-current channel around the PIL and significantly smaller PIL shear. Out of the quantities we considered, these two ARs differed only in their PIL shear, which was about 25° for the AR that produced no significant flares and about 40° for the one that did.

Our results support the association between strong PIL shear and substantial net currents found in simulations (Section 1). This association is seemingly not simple, though, as

<sup>4</sup> Recently, Cheng & Ding (2016) reported significantly smaller  $|DC/RC|$  values (1.0–1.4) for four CME-producing ARs, but they considered only one AR polarity and did not exclude irrelevant flux (see Section 2.2). As expected,  $|DC/RC|$  increased to 1.2–2.0 when they restricted the integration to roughly estimated footpoint areas of the eruptions.

**Table 2**  
Relevant AR Properties

AR	$\langle  DC/RC  \rangle$	$\langle \Phi \rangle$	<i>J</i> -pattern	Flares	CMEs
AR 11072	$0.98 \pm 0.01$	$25^\circ 1 \pm 6^\circ 4$	No	No	No
AR 12192	$1.06 \pm 0.01$	$41^\circ 2 \pm 11^\circ 3$	No	Yes	No
AR 11429	$2.17 \pm 0.01$	$67^\circ 4 \pm 8^\circ 5$	Yes	Yes	Yes
AR 11158	$2.54 \pm 0.02$	$63^\circ 6 \pm 6^\circ 9$	Yes	Yes	Yes

**Note.**  $\langle |DC/RC| \rangle$  and  $\langle \Phi \rangle$  are five-day average values; “*J*-pattern” refers to a coherent direct-current channel around the PIL (see the text); “flares” refer to strong flares of at least M-class.

considerable shear was also present in our current-neutralized ARs. Furthermore, they suggest that return currents are not relevant for an AR’s ability to produce CMEs, as those currents do not form coherent structures that could substantially alter the hoop force in a direct-current channel above the AR’s eruptive PIL. The reason why the current-neutralized ARs in our sample do not produce CMEs rather seems to be the absence of such a channel. This supports CME models that invoke net currents and the hoop force (see the discussion in Török et al. 2014).





Finally, our results indicate that  $|DC/RC|$  may constitute a better quantity for assessing an AR’s ability to produce CMEs than the PIL shear, as the differences in the former quantity appear more pronounced. Equivalently, the presence or absence of a double-*J*-pattern of direct currents around the PIL may indicate whether or not an AR will produce CMEs. On the other hand, it appears that current-neutralized ARs without such a pattern can still produce strong flares, as AR 12192 demonstrates. Those flares may be merely confined, though, and their occurrence may require a certain amount of PIL shear (the shear in AR 12192 was almost twice as large as in the quiet AR 11072). It has to be kept in mind, though, that very strong flares without CMEs are quite rare and that AR 12192 was exceptional in this respect (e.g., Sun et al. 2015).

Our conclusions are quite speculative, of course, as our AR sample is very small. Similar investigations using larger samples are required before more definite conclusions regarding the potential relationship between the amount of current neutralization, PIL magnetic shear, and eruptive activity of solar ARs can be drawn. Furthermore, more numerical investigations are required to gain a deeper physical understanding of the factors that determine the electric-current distribution in ARs and its role for eruptive activity. The very good agreement of the MHD simulation by Leake et al. (2013) with the observations of AR 11158 (Figure 2) demonstrates that such simulations, despite various idealizations, are well suited for this task.

We thank the *SDO* team members for their hard work! We thank the anonymous referee for comments and suggestions that helped improve this Letter. This work was supported by NASA contract NAS5-02139 (HMI) to Stanford University.

Data were used courtesy of NASA/*SDO* and the HMI science team. T.T. was supported by NASA’s LWS program and NSF grant AGS-1348577, J.E.L. by NASA’s LWS and HSR programs, and V.S.T. by NASA’s HSR program and NSF grant AGS-1560411.

## ORCID iDs

Yang Liu  <https://orcid.org/0000-0002-0671-689X>  
Xudong Sun  <https://orcid.org/0000-0003-4043-616X>  
Tibor Török  <https://orcid.org/0000-0003-3843-3242>  
Viacheslav S. Titov  <https://orcid.org/0000-0001-7053-4081>

## References

- Alissandrakis, C. E. 1981, *A&A*, **100**, 197  
Aschwanden, M. J., Sun, X., & Liu, Y. 2014, *ApJL*, **785**, 34  
Cheng, X., & Ding, M. D. 2016, *ApJS*, **225**, 16  
Dalmasse, K., Aulanier, G., Démoulin, P., et al. 2015, *ApJ*, **810**, 17  
Forbes, T. 2010, in *Heliophysics: Space Storms and Radiation: Causes and Effects*, ed. C. J. Schrijver & G. L. Siscoe (Cambridge: Cambridge Univ. Press), 159  
Gary, G. A. 1989, *ApJS*, **69**, 323  
Georgoulis, M. K., Titov, V. S., & Mikić, Z. 2012, *ApJ*, **761**, 61  
Gosain, S., Démoulin, P., & López Fuentes, M. 2014, *ApJ*, **793**, 15  
Hagyard, M. J., Teuber, D., West, E. A., & Smith, J. B. 1984, *SoPh*, **91**, 115  
Hoeksema, J. T., Liu, Y., Hayashi, K., et al. 2014, *SoPh*, **289**, 3483  
Janvier, M., Aulanier, G., Bommier, V., et al. 2014, *ApJ*, **788**, 60  
Kliem, B., & Török, T. 2006, *PhRvL*, **96**, 255002  
Leake, J. E., Linton, M. G., & Török, T. 2013, *ApJ*, **778**, 99  
Liu, Y., & Schuck, P. W. 2012, *ApJ*, **761**, 105  
Liu, Y. D., Richardson, J. D., Wang, C., & Luhmann, J. G. 2014, *ApJL*, **788**, L28  
Longcope, D. W., & Welsch, B. T. 2000, *ApJ*, **545**, 1089  
Mackay, D. H., Karpen, J. T., Ballester, J. L., Schmieder, B., & Aulanier, G. 2010, *SSRv*, **151**, 333  
Melrose, D. B. 1991, *ApJ*, **381**, 306  
Melrose, D. B. 1995, *ApJ*, **451**, 391  
Parker, E. N. 1996, *ApJ*, **471**, 485  
Pesnell, W. D., Thompson, B. J., & Chamberlin, P. C. 2012, *SoPh*, **275**, 3  
Petrie, G. J. D. 2013, *SoPh*, **287**, 415  
Ravindra, B., Venkatakrishnan, P., Tiwari, S. K., & Bhattacharyya, R. 2011, *ApJ*, **740**, 19  
Scherrer, P. H., Schou, J., Bush, R. I., et al. 2012, *SoPh*, **275**, 207  
Schou, J., Scherrer, P. H., Bush, R. I., et al. 2012, *SoPh*, **275**, 229  
Sun, X., Bobra, M. G., Hoeksema, J. T., et al. 2015, *ApJL*, **804**, L28  
Sun, X., Hoeksema, J. T., Liu, Y., et al. 2012, *ApJ*, **748**, 77  
Thalmann, J. K., Su, Y., Temmer, M., & Veronig, A. M. 2015, *ApJL*, **801**, L23  
Titov, V. S. 2007, *ApJ*, **660**, 863  
Titov, V. S., Mikić, Z., Linker, J. A., Lionello, R., & Antiochos, S. K. 2011, *ApJ*, **731**, 111  
Török, T., & Kliem, B. 2003, *A&A*, **406**, 1043  
Török, T., Leake, J. E., Titov, V. S., et al. 2014, *ApJL*, **782**, L10  
Vemareddy, P., Venkatakrishnan, P., & Karthikreddy, S. 2015, *RAA*, **15**, 1547  
Venkatakrishnan, P., & Tiwari, S. K. 2009, *ApJL*, **706**, L114  
Wang, H., Ewell, M. W., Jr., Zirin, H., & Ai, G. 1994, *ApJ*, **424**, 436  
Wang, S., Liu, C., & Wang, H. 2012, *ApJL*, **757**, L5  
Wheatland, M. S., Sturrock, P. A., & Roumeliotis, G. 2000, *ApJ*, **540**, 1150  
Wiegmann, T. 2004, *SoPh*, **219**, 87  
Zakharov, L. E., & Shafranov, V. D. 1986, in *Reviews of Plasma Physics*, Vol. 11, ed. M. A. Leontovich (New York: Consultants Bureau), 153