



Evidence That the Directly Imaged Planet HD 131399 Ab Is a Background Star

Eric L. Nielsen^{1,2}, Robert J. De Rosa³, Julien Rameau⁴, Jason J. Wang³, Thomas M. Esposito³,
 Maxwell A. Millar-Blanchaer^{5,36}, Christian Marois^{6,7}, Arthur Vigan⁸, S. Mark Ammons⁹, Etienne Artigau⁴,
 Vanessa P. Bailey², Sarah Blunt^{1,2,10}, Joanna Bulger¹¹, Jeffrey Chilcote¹², Tara Cotten¹³, René Doyon⁴,
 Gaspard Duchêne^{3,14}, Daniel Fabrycky¹⁵, Michael P. Fitzgerald¹⁶, Katherine B. Follette¹⁷, Benjamin L. Gerard^{6,7},
 Stephen J. Goodsell¹⁸, James R. Graham³, Alexandra Z. Greenbaum¹⁹, Pascale Hibon²⁰, Sasha Hinkley²¹,
 Li-Wei Hung¹⁶, Patrick Ingraham²², Rebecca Jensen-Clem²³, Paul Kalas^{1,3}, Quinn Konopacky²⁴, James E. Larkin¹⁶,
 Bruce Macintosh², Jérôme Maire²⁴, Franck Marchis¹, Stanimir Metchev^{25,26}, Katie M. Morzinski²⁷,
 Ruth A. Murray-Clay²⁸, Rebecca Oppenheimer²⁹, David Palmer⁹, Jennifer Patience³⁰, Marshall Perrin³¹, Lisa Poyneer⁹,
 Laurent Pueyo³¹, Roman R. Rafikov^{32,33}, Abhijith Rajan³⁰, Fredrik T. Rantakyro²⁰, Jean-Baptiste Ruffio²,
 Dmitry Savransky³⁴, Adam C. Schneider³⁰, Anand Sivaramakrishnan³¹, Inseok Song¹³, Remi Soummer³¹,
 Sandrine Thomas²², J. Kent Wallace⁵, Kimberly Ward-Duong³⁰, Sloane Wiktorowicz²⁸, and Schuyler Wolff³⁵

¹ SETI Institute, Carl Sagan Center, 189 Bernardo Avenue, Mountain View CA 94043, USA; enielsen@seti.org

² Kavli Institute for Particle Astrophysics and Cosmology, Stanford University, Stanford, CA 94305, USA

³ Department of Astronomy, University of California, Berkeley, CA 94720, USA

⁴ Institut de Recherche sur les Exoplanètes, Département de Physique, Université de Montréal, Montréal QC, H3C 3J7, Canada

⁵ Jet Propulsion Laboratory, California Institute of Technology, Pasadena, CA 91125, USA

⁶ National Research Council of Canada Herzberg, 5071 West Saanich Road, Victoria, BC, V9E 2E7, Canada

⁷ University of Victoria, 3800 Finnerty Road, Victoria, BC, V8P 5C2, Canada

⁸ Aix Marseille Univ, CNRS, LAM, Laboratoire d'Astrophysique de Marseille, Marseille, France

⁹ Lawrence Livermore National Laboratory, Livermore, CA 94551, USA

¹⁰ Department of Physics, Brown University, Providence, RI 02912, USA

¹¹ Subaru Telescope, NAOJ, 650 North A'ohoku Place, Hilo, HI 96720, USA

¹² Dunlap Institute for Astronomy & Astrophysics, University of Toronto, Toronto, ON M5S 3H4, Canada

¹³ Department of Physics and Astronomy, University of Georgia, Athens, GA 30602, USA

¹⁴ Univ. Grenoble Alpes/CNRS, IPAG, F-38000 Grenoble, France

¹⁵ Department of Astronomy and Astrophysics, University of Chicago, 5640 South Ellis Avenue, Chicago, IL 60637, USA

¹⁶ Department of Physics & Astronomy, University of California, Los Angeles, CA 90095, USA

¹⁷ Amherst College Department of Physics and Astronomy, Merrill Science Center, 15 Mead Drive, Amherst, MA 01002, USA

¹⁸ Gemini Observatory, 670 N. A'ohoku Place, Hilo, HI 96720, USA

¹⁹ Department of Astronomy, University of Michigan, Ann Arbor, MI 48109-1090, USA

²⁰ Gemini Observatory, Casilla 603, La Serena, Chile

²¹ School of Physics, College of Engineering, Mathematics and Physical Sciences, University of Exeter, Exeter EX4 4QL, UK

²² Large Synoptic Survey Telescope, 950N Cherry Avenue, Tucson, AZ 85719, USA

²³ Department of Astrophysics, California Institute of Technology, 1200 E. California Boulevard, Pasadena, CA 91101, USA

²⁴ Center for Astrophysics and Space Science, University of California San Diego, La Jolla, CA 92093, USA

²⁵ Department of Physics and Astronomy, Centre for Planetary Science and Exploration,
 The University of Western Ontario, London, ON N6A 3K7, Canada

²⁶ Department of Physics and Astronomy, Stony Brook University, Stony Brook, NY 11794-3800, USA

²⁷ Steward Observatory, University of Arizona, Tucson, AZ 85721, USA

²⁸ Department of Astronomy, UC Santa Cruz, 1156 High Street, Santa Cruz, CA 95064, USA

²⁹ Department of Astrophysics, American Museum of Natural History, New York, NY 10024, USA

³⁰ School of Earth and Space Exploration, Arizona State University, P.O. Box 871404, Tempe, AZ 85287, USA

³¹ Space Telescope Science Institute, Baltimore, MD 21218, USA

³² Department of Applied Mathematics and Theoretical Physics, Centre for Mathematical Sciences,
 University of Cambridge, Wilberforce Road, Cambridge CB3 0WA, UK

³³ Institute for Advanced Study, Einstein Drive, Princeton, NJ 08540, USA

³⁴ Sibley School of Mechanical and Aerospace Engineering, Cornell University, Ithaca, NY 14853, USA

³⁵ Department of Physics and Astronomy, Johns Hopkins University, Baltimore, MD 21218, USA

Received 2017 May 18; revised 2017 August 30; accepted 2017 September 1; published 2017 November 8

Abstract

We present evidence that the recently discovered, directly imaged planet HD 131399 Ab is a background star with nonzero proper motion. From new *JHK₁L'* photometry and spectroscopy obtained with the Gemini Planet Imager, VLT/SPHERE, and Keck/NIRC2, and a reanalysis of the discovery data obtained with VLT/SPHERE, we derive colors, spectra, and astrometry for HD 131399 Ab. The broader wavelength coverage and higher data quality allow us to reinvestigate its status. Its near-infrared spectral energy distribution excludes spectral types later than L0 and is consistent with a K or M dwarf, which are the most likely candidates for a background object in this direction at the apparent magnitude observed. If it were a physically associated object, the projected velocity of HD 131399 Ab would exceed escape velocity given the mass and distance to HD 131399 A. We show that HD 131399 Ab is also not following the expected track for a stationary background star at infinite distance. Solving for the proper motion and parallax required to explain the relative motion of HD 131399 Ab, we find a proper motion of 12.3 mas yr^{-1} . When compared to predicted background objects drawn from a galactic model, we find this proper motion to be

³⁶ NASA Hubble Fellow.

high but consistent with the top 4% fastest-moving background stars. From our analysis, we conclude that HD 131399 Ab is a background K or M dwarf.

Key words: astrometry – instrumentation: adaptive optics – planets and satellites: detection – stars: individual (HD 131399) – techniques: image processing – techniques: spectroscopic

1. Introduction

Since 2005, multiple planets have been detected by direct imaging (e.g., Chauvin et al. 2004, 2005; Kalas et al. 2008; Marois et al. 2008; Lagrange et al. 2010; Marois et al. 2010; Carson et al. 2013; Quanz et al. 2013; Rameau et al. 2013; Macintosh et al. 2015). Following the submission of this work, Chauvin et al. (2017) announced the discovery of a planet orbiting the star HIP 65426. For planets at wide separation (>5 au), it is particularly interesting to consider the dynamics of the system that could influence the formation and migration of the planets (e.g., Rodet et al. 2017). Indeed, several of the stars that host directly imaged planets are components of a multiple system, including 51 Eridani, which is orbited at ~ 2000 au by GJ 3305, a 6 au binary M dwarf pair (De Rosa et al. 2015; Macintosh et al. 2015; Montet et al. 2015), and Fomalhaut (Kalas et al. 2008), with TW Piscis Austrini and LP 876-10 at $\sim 54,000$ and $\sim 160,000$ au projected separation (Mamajek et al. 2013). Both of these cases have a planet much closer to its parent star than the stellar companions, and so locating planets at more intermediate distance between primary star and stellar companions will help guide our understanding of how planets in binaries form and evolve.

HD 131399 is a young (16 ± 7 Myr) triple-star system in the Upper Centaurus Lupus (UCL) association, a subgroup of the Scorpius–Centaurus (ScoCen) association (de Zeeuw et al. 1999; Rizzuto et al. 2011; Pecaut & Mamajek 2016) located at a distance of 98.0 ± 6.9 pc (van Leeuwen 2007). The hierarchical system comprises the central A-type star with a spectral type of A1V (Houk & Smith-Moore 1988) and a tight pair composed of a G and a K star at a projected separation more than $3''$ (~ 300 au) from A (Dommanget & Nys 2002). During a survey carried out with the Spectro-Polarimetric High-contrast Exoplanet REsearch instrument (SPHERE; Beuzit et al. 2008) at the VLT, a candidate planet was recently discovered in the system at a projected separation of $0''.83$ (≈ 82 au; Wagner et al. 2016, hereafter W16). To assess the status of the source, astrometric follow-up was carried out 11 months later. The stationary background hypothesis was ruled out since both the star and the source share common proper motion. The comoving scenario was also supported by a probability of 6.6×10^{-6} to detect a cold (<1500 K) but unbound object along the line of sight at this stage of their survey. Moreover, the follow-up showed a motion consistent with an orbit around HD 131399 A. W16 reported a luminosity-based model-dependent mass of $4 \pm 1 M_{\text{Jup}}$, an effective temperature of 850 ± 50 K, and a spectral type of T2–T4 with the detection of methane in the H and K bands. The importance of HD 131399 Ab in the field is threefold: wide-orbit giant planets can be formed in hierarchical systems; the system is a good example to test dynamical evolution; and the planet is one of the few known at a low temperature (<1000 K) to test atmospheric models.

Given the significance of this discovery, HD 131399 Ab was observed in 2017 with the Gemini Planet Imager (GPI; Macintosh et al. 2014) at the Gemini South observatory, with SPHERE at the VLT, and with the Near-Infrared Camera and

Coronagraph (NIRC2) and the facility adaptive optics system (Wizinowich et al. 2006) at Keck observatory. The analysis of the data reveals unexpected spectroscopic and astrometric results that motivated the reanalysis of some of the already published data obtained with VLT/SPHERE. In Section 2, we discuss the observations, data reduction, and astrometric and spectral extraction. The spectral energy distributions (SEDs) of HD 131399 A and HD 131399 Ab are presented and analyzed in Section 3, and the astrometric measurements and analysis are presented in Section 4. The status of HD 131399 Ab is discussed in Section 4.5, and conclusions are drawn in Section 5.

2. Observations and Data Reduction

This paper uses 10 data sets that were obtained with three different adaptive optics instruments, mounted on three different telescopes, all making use of the angular differential imaging technique (ADI; Marois et al. 2006). Six out of the 10 data sets are new from GPI, SPHERE, and NIRC2. The remaining data come from SPHERE and were previously published in W16 but are reanalyzed as part of this work. The date, instrument, filter and resolution, exposure times, parallactic angle extent, and DIMM seeing of the observations are detailed in Table 1. We also computed the fraction of time HD 131399 Ab (over one full width at half maximum, FWHM) was effectively on the detector for each data set, because of its particular orientation with respect to the SPHERE IFS detector. We provide more details on the observing sequence and data reduction below.

2.1. New Gemini South/GPI Observations

HD 131399 A was observed with GPI at two epochs, 2017 February and 2017 April, as part of the GPI Exoplanet Survey (GS-2015B-Q-501). Three data sets were obtained on consecutive nights in 2017 February, with a total on-source integration time of 1.87 hr at $K1_{\text{GPI}}$ ($\lambda_{\text{eff}} = 2.06 \mu\text{m}$), 1.38 hr at H ($\lambda_{\text{eff}} = 1.64 \mu\text{m}$), and 1.60 hr at J ($\lambda_{\text{eff}} = 1.23 \mu\text{m}$). An additional data set was obtained on 2017 April 20 at H with an on-source integration time of 1.03 hr. Each data set was obtained in the spectral coronagraphic mode of the instrument.

To create spectral data cubes, the raw data were reduced with the GPI Data Reduction Pipeline v1.4.0 (DRP; Perrin et al. 2014, 2016), which subtracts the dark current, removes the microphonic noise (Chilcote et al. 2012; Ingraham et al. 2014b), and identifies and removes bad pixels. Instrument flexure is compensated for using observations of an argon arc lamp taken immediately prior to each sequence at the target elevation (Wolff et al. 2014). Microspectra are then extracted to create 37-channel data cubes (Maire et al. 2014), which are corrected for any remaining bad pixels and finally for distortion (Konopacky et al. 2014). The last step consists of measuring in each image the location of the four satellite spots—attenuated replicas of the central point-spread function (PSF) created by a diffraction grating in the pupil plane—to accurately measure the position and flux of the central star during the sequence

Table 1
Observing Log

UT Date	Instrument	Mode	Filter(s)	Resolution	t_{int} (s)	N_{coadd}	N_{exp}	Field of View Rotation (deg)	DIMM Seeing ($''$)	% Time with Ab on Chip
2015 Jun 12	SPH-IFS	Spectroscopy	<i>YJH</i>	30	32	1	50	38.0	1.0	46
	SPH-IRDIS	Imaging	<i>K1K2</i>	...	16	1	96	37.2	1.0	100
2016 Mar 06	SPH-IFS	Spectroscopy	<i>YJH</i>	30	32	1	84	41.1	1.1	67
	SPH-IRDIS	Imaging	<i>K1K2</i>	...	32	1	63	34.0	1.1	100
2016 Mar 17	SPH-IFS	Spectroscopy	<i>YJH</i>	30	32	1	56	37.8	1.2	100
	SPH-IRDIS	Imaging	<i>K1K2</i>	...	32	1	56	37.3	1.2	100
2016 May 07	SPH-IFS	Spectroscopy	<i>YJH</i>	30	32	...	56	41.3	1.0	30
	SPH-IRDIS	Imaging	<i>K1K2</i>	...	32	...	56	40.4	1.0	100
2017 Feb 08	NIRC2	Imaging	<i>L'</i>	...	0.9	30	166	37.0	...	100
2017 Feb 14	GPI	Spectroscopy	<i>K1</i>	66	60	1	112	93.5	0.9	100
2017 Feb 15	GPI	Spectroscopy	<i>H</i>	46	60	1	83	107.9	1.0	100
2017 Feb 16	GPI	Spectroscopy	<i>J</i>	37	60	1	96	110.4	0.7	100
2017 Mar 15	SPH-IRDIS	Polarimetry	<i>J</i>	...	64	1	20	5.3	0.6	100
2017 Apr 20	GPI	Spectroscopy	<i>H</i>	46	60	1	62	133.3	...	100

Table 2
Properties of the HD 131399 System

Property	Value	Unit
π	10.20 ± 0.70^a	mas
d	$98.0^{+7.2}_{-6.3}^a$	pc
μ_{α}	-29.69 ± 0.59^a	mas yr $^{-1}$
μ_{δ}	-31.52 ± 0.55^a	mas yr $^{-1}$
Age	16 ± 7^b	Myr
	A	Ab
$\Delta Y_{\text{SPH-IFS}}$	13.73 ± 0.23^c	mag
$\Delta J_{\text{SPH-IFS}}$	13.32 ± 0.14^c	mag
$\Delta H_{\text{SPH-IFS}}$	13.04 ± 0.16^c	mag
$\Delta K1_{\text{SPH}}$	12.70 ± 0.05^c	mag
$\Delta K2_{\text{SPH}}$	12.50 ± 0.13^c	mag
ΔJ_{GPI}	13.37 ± 0.17	mag
ΔH_{GPI}	12.84 ± 0.06^c	mag
$\Delta K1_{\text{GPI}}$	12.61 ± 0.17	mag
$\Delta L'$	>11.10	mag
$Y_{\text{SPH-IFS}}$	6.928 ± 0.015^d	20.64 ± 0.16
J_{GPI}	6.904 ± 0.016^d	20.27 ± 0.17
H_{GPI}	6.895 ± 0.017^d	19.73 ± 0.07
$K1_{\text{GPI}}$	6.872 ± 0.018^d	19.48 ± 0.17
$K1_{\text{SPH}}$	6.869 ± 0.018^d	19.56 ± 0.06
$K2_{\text{SPH}}$	6.865 ± 0.019^d	19.36 ± 0.13
L'	6.862 ± 0.020^d	>17.96

Notes.^a van Leeuwen (2007).^b Combining median age and uncertainty with intrinsic age spread from Pecaut & Mamajek (2016).^c Obtained from a weighted mean of the different epochs presented in Table 5.^d Synthetic photometry derived from SED fit described in Section 3.1.

(Wang et al. 2014). The position of each satellite spot flux is written in the header so that it can be used for calibration.

Further processing to remove the stellar PSF and extract the astrometry and spectrophotometry of HD 131399 Ab was performed using two different pipelines to mitigate biases and systematics introduced by the data processing.

In the first pipeline, a Fourier high-pass filter with a smooth cutoff frequency of four spatial cycles was applied to each image. The speckle field was then estimated and subtracted using

the classical ADI algorithm (cADI; Marois et al. 2006; following the definition of Lagrange et al. 2010 as a median combination) for each sequence in each wavelength slice, which was then rotated to align north with the vertical axis and averaged over the sequence. Broadband images were further created from the stack of the individual slices, examples of which are shown in Figure 1. The astrometry and broadband contrasts of HD 131399 Ab were extracted in each data set from the broadband images using the negative simulated planet technique (Lagrange et al. 2010; Marois et al. 2010). A template PSF of HD 131399 Ab was created from the temporal and spectral average of the four satellite spots. The template was injected in the raw data cubes at a trial position but opposite flux of HD 131399 Ab, and the same reduction as for the original set was executed. The process was iterated over these three parameters (separation, position angle, flux) to minimize the integrated squared pixel noise in a wedge of 3×3 FWHM centered at the trial position. The minimization was performed with the amoeba-simplex optimization algorithm (Nelder & Mead 1965) and provided the best-fit broadband contrast and position. Uncertainties on HD 131399 Ab location and contrast were calculated by injecting independently 20 positive templates at the same separation and contrast as HD 131399 Ab but different position angles. The fitting procedure was repeated for each simulated source and the measurement errors obtained from the statistical dispersion on the three parameters. Finally, the contrasts—and associated measurement errors—in individual slices in each set were then extracted following the same procedure at the best-fit position, which is fixed, and varying only the flux of the template, which is built for each wavelength from the corresponding satellite spots.

The second pipeline used pyKLIP (Wang et al. 2015), an open-source Python implementation of the Karhunen-Loève Image Projection algorithm (KLIP; Soummer et al. 2012). Before PSF subtraction, the images were high-pass filtered using a seven-pixel FWHM Gaussian filter in Fourier space to remove the smooth background. KLIP was run on a 22-pixel-wide annulus centered on the location of the source. To build the model of the stellar PSF, we used the 150 most-correlated reference images in which HD 131399 Ab moved at least a certain number of pixels due to ADI and SDI observing methods (the exclusion criteria). Since we will forward-model the PSF of the planet, including the effects of self-subtraction,

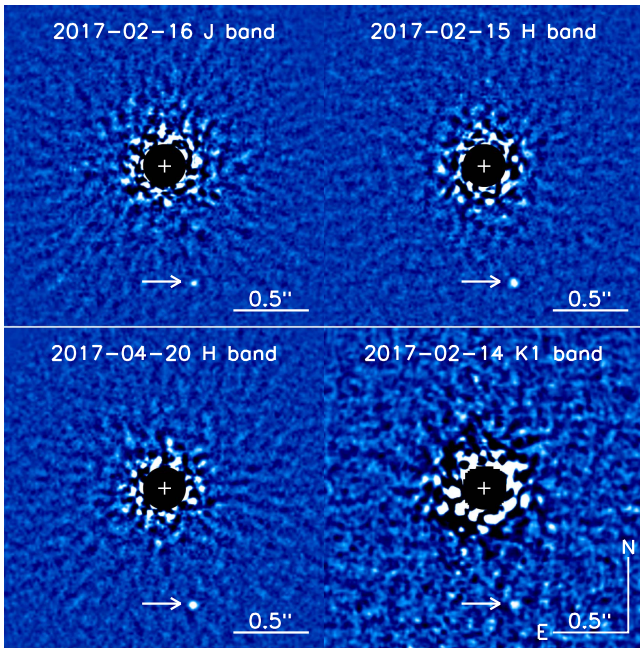


Figure 1. cADI PSF-subtracted images of HD 131399 Ab obtained with GPI in 2017 in the *J* (top left), *H* (top right and bottom left), and *K1* (bottom right) bands. A two-pixel low-pass filter was applied on the images to suppress shot noise. Intensity scales are linear, different in each image, and chosen to saturate the PSF of HD 131399 Ab. The central star is masked numerically, and its position is marked by the white cross.

we use an aggressive exclusion criteria of 1.5 pixels for all wavelengths except the *J*-band, where we found that using images very close in time most accurately modeled the speckles and thus a 0.2 pixel exclusion criteria worked best. As the source is far from the star and thus from the majority of the speckle noise, we used only the first five KL basis vectors to reconstruct the stellar PSF. All images were then rotated to align north up and collapsed in time and wavelength, resulting in one 2D image per epoch. The astrometry and broadband photometry were measured from these images using the Bayesian KLIP-FM Astrometry (BKA) technique (Wang et al. 2016) that is implemented in `pyKLIP`. In BKA, we concurrently forward-model the PSF of HD 131399 Ab during KLIP. To do this, we used the average of the satellite spots to model the instrumental PSF at each wavelength, and we assumed HD 131399 Ab had a spectral shape that was the same as HD 131399 A. As noted in Wang et al. (2016), spectra differing by even 20% did not affect the astrometry, so we did not require a precise input spectral template for our forward model. After generating the forward model, we used the affine-invariant sampler implemented in `emcee` (Foreman-Mackey et al. 2013) to compute the posterior distribution of the location and flux of HD 131399 Ab. Our MCMC sampler used 100 walkers, each iterating for 800 steps after 300 steps were discarded as the “burn in.” To obtain accurate uncertainties, the residual speckle noise in the image was modeled as a Gaussian process with a spatial correlation described by the Matérn covariance function. We adopt the 50th percentile values as the position of HD 131399 Ab and the 16th and 84th percentile values as the 1σ uncertainty range. To obtain the spectrum of HD 131399 Ab in each filter, we performed a PSF subtraction with KLIP that only used ADI to model the stellar PSF, allowing us to forward-model the PSF of HD 131399 Ab without any spectral dependencies. Then, we modified BKA to

run independently on each spectral channel to obtain the flux and the uncertainty on the flux at each wavelength. As the planet has significantly lower signal-to-noise ratio (S/N) in each spectral channel than in a collapsed broadband image, we restricted the position of the planet to be within 0.1 pixel of the position we measured in the broadband data.

Astrometric calibration was obtained with observations of the θ^1 Ori B field and other calibration binaries following the procedure described in Konopacky et al. (2014) and used to convert the detector positions into on-sky astrometry. The astrometric error budget consists of the following added in quadrature: the measurement errors described previously; a star registration error of 0.7 mas from Wang et al. (2014); a plate scale error of $0.007 \text{ mas lenslet}^{-1}$; and position angle offset error of 0.13 deg, the last two from Konopacky et al. (2014).

The raw astrometric and photometric measurements from the two pipelines ($i = 1, 2$) agreed very well to better than 1σ at each epoch. The pairs (x_i, σ_i) from the two pipelines for each data set were combined with a weighted average $x_{\text{tot}} = \sum_i w_i x_i / \sum_i w_i$, where $w_i = 1/\sigma_i^2$. The measurement errors were computed as $\sigma_{\text{tot}} = \sqrt{\sum_i \sigma_i^2 w_i / \sum_i w_i}$ since they are not independent. The systematic errors (registration, calibration) were then added in quadrature to calculate the final astrometric uncertainties.

Photometric measurements from different epochs ($j = 1, 2$) were also combined with the same weighted mean, but the errors were computed as $\sigma_{\text{tot}} = \sqrt{1/\sum_j w_j}$ since they are independent. Finally, the systematic uncertainties of the star-to-satellite-spot ratios (0.03 mag in the *J* band, 0.06 mag in the *H* band, and 0.07 mag in the *K1* band, Maire et al. 2014) were added in quadrature to the final contrast errors. The spectrum was then obtained by multiplying the contrasts with the spectrum of the central star (see Section 3.1).

The S/Ns for each data set were computed using the `pyKLIP` implementation of the Forward Model Matched Filter (FMMF) algorithm (Ruffio et al. 2017), using the stellar spectrum of HD 131399 A as the spectral template in the matched filter. Like the two pipelines to extract astrometric and photometric data, FMMF similarly utilizes forward modeling of point sources through the PSF subtraction process for the data analysis, but is better optimized for planet detection. Thus, FMMF produces S/Ns that are comparable or slightly better than the S/Ns inferred from the astrometric for photometric errors.

All measurements are discussed in Sections 3.2 and 4.

2.2. Public VLT/SPHERE Data and New Observations

2.2.1. Reanalysis of Public Data

Four epochs of observations were obtained with SPHERE by W16 between 2015 June and 2016 May, all of which are publicly available on the ESO archive.³⁷ We downloaded the data as well as the associated raw calibration files. Briefly, the HD 131399 system was observed with the `IRDIFS_EXT` mode using simultaneously the Integral Field Spectrograph (IFS; Claudi et al. 2008) instrument in spectroscopic mode over $0.95\text{--}1.65 \mu\text{m}$ (*YJH*) and the Infra-Red Dual-beam Imaging and Spectroscopy (IRDIS; Dohlen et al. 2008) instrument in dual-band imaging mode (DBI; Vigan et al. 2010) at $K1_{\text{SPH}}$ ($\lambda_{\text{eff}} = 2.10 \mu\text{m}$) and $K2_{\text{SPH}}$ ($\lambda_{\text{eff}} = 2.25 \mu\text{m}$), with all SPHERE filter profiles being different from those of GPI (see Section 3.1 and Figure 8). The

³⁷ <http://archive.eso.org/>

IRDIS detector was dithered on a 4×4 pattern. A total of 0.44 hr, 0.75 hr, 0.50 hr, and 0.50 hr were obtained on the IFS on 2015 June 12, 2016 March 06, 2016 March 17, and 2016 May 07, respectively, and 0.43 hr, 0.56 hr, 0.50 hr, and 0.50 hr on IRDIS, the difference between the two detectors being due to readout overheads. Each observing sequence started and finished with a brief “star-center” coronagraphic sequence in which four satellite spots are created from a periodic modulation introduced on the deformable mirror, the barycenter of these spots being used to measure the position of the star behind the focal plane mask during the sequence. In practice, the star position is very stable (Zurlo et al. 2016; Vigan et al. 2015). A brief off-axis ($\approx 0''.4$) “flux” sequence with the neutral density filter ND3.5 (attenuation factor from 4×10^2 to 2×10^4 dependent on wavelength) was then executed to obtain a template and the flux of the target PSF. The on-axis coronagraphic sequence was then carried out. Calibration data were obtained during the following days: darks, detector flat fields, integral field unit flat (broadband lamp image to register the IFS microspectra), and a wavelength calibration frame.

IFS data processing. The raw data and calibration files were reduced using the SPHERE IFS preprocessing tools v1.2³⁸ (Vigan et al. 2015), which make use of custom IDL routines and the ESO Data Reduction and Handling (DRH) package v22.0 (Pavlov et al. 2008). These tools were updated with the latest calibration values provided by Maire et al. (2016) and the ESO SPHERE user manual 7th edition³⁹: instrument angle updates (pupil offset of 135.99 deg, and IFS angle offset of -100.48 deg), the IFS anamorphism correction (1.0059 along the horizontal direction, 1.0011 along the vertical direction), and the parallactic angle correction ϵ , a small factor to correct the parallactic angle calculation for a missynchronization between the VLT and SPHERE internal clock that affects data taken before 2016 July 13. Additionally, the tools were updated to process the entire field of view (it was originally cropped by five pixels on the edges). The preprocessing tools used the DRH package to create the master darks, bad pixel maps, the microspectra position map, the IFU flat field, and the wavelength calibration file. Detector flats were created with a custom IDL routine. The data preprocessing was then executed by a custom IDL routine, which subtracts the dark current, removes the bad pixels, and corrects for cross-talk. This was followed by processing through the DRH, which corrects for flat-fielding and extracts the microspectra to create 39-channel data cubes. The 3D data cubes were then digested by a custom IDL routine to remove the remaining bad pixels, to correct for the anamorphism, to register the spot locations in the star-center frames, to align the coronagraphic and the off-axis PSF frame at the center, and to recalibrate the wavelengths.

IRDIS data processing. A custom set of tools to reduce IRDIS DBI data was developed following the IFS philosophy, combining both DRH and IDL routines. IRDIS DBI raw data are made from images in two side-by-side quadrants, being associated with the *K1* (left) and *K2* (right) filters. The DRH first created the master darks, flat fields, and associated bad-pixel maps. Our IDL routine then performed the dark current subtraction, flat-field division, bad-pixel removal, vertical anamorphism correction by a factor of 1.006 (Maire et al. 2016), and parallactic angle calculation and correction

by the ϵ factor. For each image, the two quadrants were separated at the end to create a master data cube for each filter. The locations of the satellite spots and frame registration, taking into account the dithering offset from the header keywords, were performed as for the IFS data as final processing steps.

Similarly to the GPI data, the speckle field in both IRDIS and IFS data cubes was removed using the two postprocessing pipelines as described in Section 2.1. Final broadband images at *K1*, *K2*, and *YJH*, created from the stack of the 39-channel IFS data cubes, are shown for each epoch in Figure 2. The position, contrast, and measurement uncertainties of HD 131399 Ab were also obtained using the same techniques as for GPI; the PSF templates for the IRDIS and IFS data were built from the unsaturated off-axis images of the star. The astrometric calibrations of the plate scale and position angle for both instruments are given by Maire et al. (2016) and the ESO SPHERE user manual 7th edition to convert the on-chip measurements into on-sky positions. These calibration values have been stable since the commissioning of the instrument, when taking into account the missynchronization correction between the SPHERE and VLT clocks. The final astrometric error budget consists of the following added in quadrature: the measurement errors described in Section 2.1; a star registration error of 0.1 px (Vigan et al. 2015; Zurlo et al. 2016); a plate scale error of $0.02 \text{ mas lenslet}^{-1}$ (IFS) and $0.021 \text{ mas px}^{-1}$ (IRDIS); a pupil angle offset error of 0.11 deg; a position angle offset error of 0.08 deg; and an IFS angle offset error of 0.13 deg.

The spectrophotometric and astrometric measurements from the two pipelines agreed very well to better than 1σ at each epoch and were combined following the procedure used for the GPI data (see Section 2.1). The S/Ns for all of the data sets, except the 2016 May 7 IFS data, were also computed using the same FMMF algorithm as the GPI data. Due to the short amount of time HD 131399 Ab stays on the chip and some artifacts on the edge of the images, the 2016 May 7 IFS data seemed to be a pathological data set for the FMMF algorithm. Instead, for this data set, we computed the S/Ns by cross-correlating each broadband-collapsed image with a Gaussian PSF and comparing the peak of the cross-correlation of Ab with the standard deviation of the cross-correlation of the noise at the same separation.

Figure 3 shows the spectrum of HD 131399 Ab extracted from each epoch of IFS data. The spectra are very noisy because HD 131399 Ab is barely detected in individual slices, especially in the *Y* and *J* bands. As reported in Table 1, the source lies on the detector a small fraction of the total time in three data sets (as low as 30%), lies very close to the edge of the detector another significant portion, particularly in the 2016 May data set, and falls off the chip up to 39% of the time in our reduced IFS images. Ultimately, this reduced effective observing time strongly affects the data quality. The continuum and flux are nevertheless consistent between the different epochs, except between the *J* and *H* bands, where the atmospheric transmission is low. However, the third epoch strongly differs from the other three in the *H* band, exhibiting a steep slope with a peak at $1.61 - 1.63 \mu\text{m}$. To assess this feature, the 2016 March 17 data were reduced using LOCI, and the spectrum was extracted following the same procedure as for the cADI/pyKLIP analysis. In both cases, the slope and peak were both recovered. A visual inspection of the reduced data

³⁸ <http://astro.vigan.fr/tools.html>

³⁹ https://www.eso.org/sci/facilities/paranal/instruments/sphere/doc/VLT-MAN-SPH-14690-0430_v100.pdf

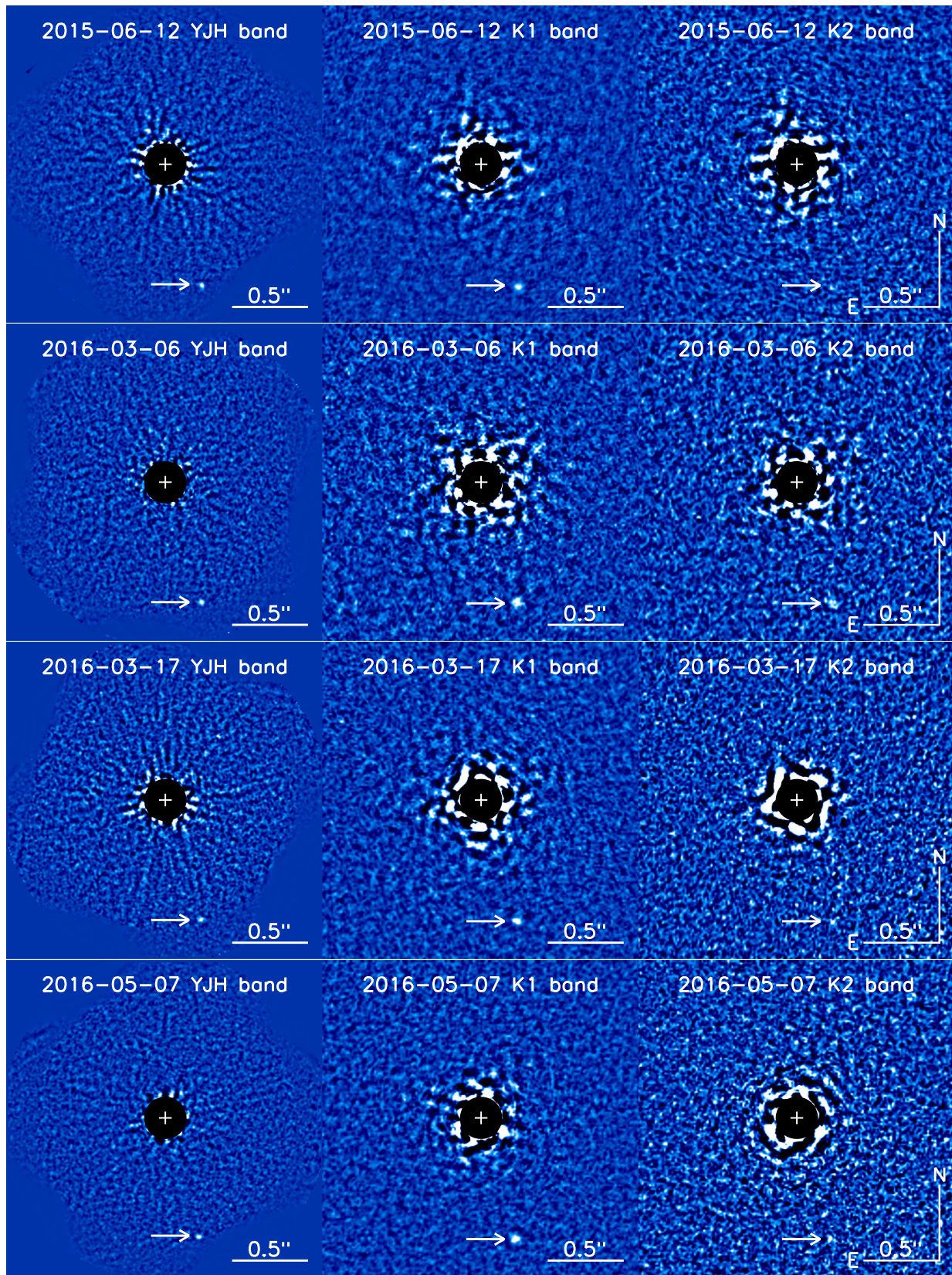


Figure 2. Reanalyzed CADI PSF-subtracted images of the publicly available data sets of HD 131399 Ab obtained with SPHERE on 2015 June 12 (top row), 2016 March 06 (second row), 2016 March 17 (third row), and 2016 May 07 (bottom row). In each row, the left column contains IFS 39-channel cubes stacked into a single *YJH* image. The source lies at the very edge of the field of view. The middle and right columns contain IRDIS images at *K1* and *K2*, respectively. The source is barely detected in *K2*. The image design is similar to Figure 1.

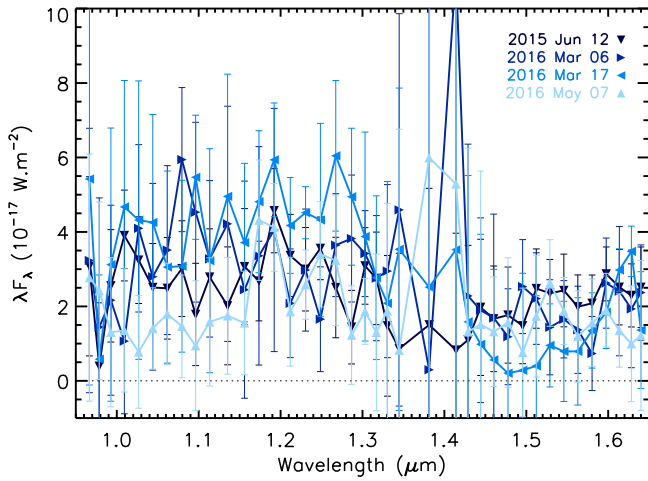


Figure 3. *YJH* SPHERE IFS spectra of HD 131399 Ab extracted from 2015 June 12 (dark blue downward triangles), 2016 March 06 (blue rightward triangles), 2016 March 17 (sky blue leftward triangles), and 2016 May 07 (light blue upward triangles). As HD 131399 Ab is barely detected in individual channels, all epochs are noisy, but the spectra are consistent in the *YJ* band. Only the third epoch exhibits a steep slope in the *H* band, with a peak near $1.62 \mu\text{m}$. Discrepancies around $1.35\text{--}1.40 \mu\text{m}$ can be explained by the significantly lower atmospheric transmission at these wavelengths.

cubes reveals the presence of a speckle very close to HD 131399 Ab, which becomes more prominent in the 1.61 and $1.63 \mu\text{m}$ channels (see Figure 4). More aggressive high-pass filters and algorithm parameters are not able to suppress this speckle. We therefore propose that the peak of the spectrum of HD 131399 Ab in the 2016 March 17 may be biased by this speckle, particularly in less aggressive reductions.

To mitigate this effect and also to improve the S/N of the spectrum, we followed the strategy of W16 and combined the four data sets using both pipelines.

In the first pipeline, the cADI flux loss ($\simeq 5\%$) was compensated for in each data set by injecting and reducing simulated sources at the same separation as HD 131399 Ab, but at 20 other position angles. A stamp of 30×30 pixels centered at the measured position of HD 131399 Ab was then extracted in the cADI-reduced image at each epoch. The stamps of the four epochs were averaged for each wavelength slice. To extract the flux at each wavelength from the combined data, we created a forward model of the PSF of HD 131399 Ab. At each epoch and wavelength slice, the off-axis PSF was injected in a noise-free data cube at the separation and position angle of HD 131399 Ab and reduced using the parallactic angle exploration of each epoch with cADI. Stamps of the model were then extracted and combined similarly. The combined model was used to fit the flux of HD 131399 Ab using the amoeba-simplex minimization procedure. To estimate the uncertainties, the exercise (injection of simulated sources in the raw data and forward model computation) was repeated at the same separation but at 20 different position angles. The statistical dispersion of the extracted fluxes was used as the uncertainty in the spectrum at each wavelength.

In the second pipeline, we extracted from the pyKLIP-reduced data and forward-modeled PSF a 11×11 pixel stamp centered at the location of HD 131399 Ab at each epoch. The stamps of both the data and forward model were averaged over the four epochs at each wavelength slice, resulting in one stamp of both the data and forward model at each wavelength. Then,

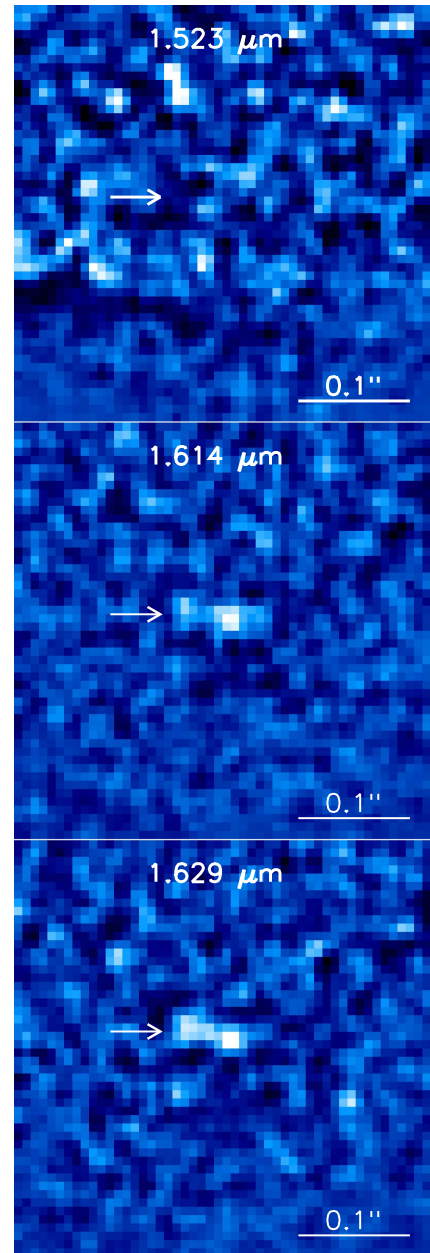


Figure 4. Stamps (220×220 mas) of HD 131399 Ab from the SPHERE IFS cADI-reduced data of 2016 Mar 17, at $1.523 \mu\text{m}$ (top), $1.614 \mu\text{m}$ (middle), and $1.629 \mu\text{m}$ (bottom). The PSF is affected by a nearby speckle (indicated by the arrow) that becomes the most prominent in the *H* band at $1.629 \mu\text{m}$. This speckle is present in all ADI reductions and might bias the spectrum of HD 131399 Ab to create a spurious peak at the *H* band. Scales are linear and identical between the three panels. North is up, and east is to the left.

we follow the same BKA technique as before to measure the flux and quantify the uncertainties in each wavelength channel.

The spectra were then combined in the same way as discussed previously. The results are discussed in Section 3.2.

Astrometry and photometry of HD 131399 B in the IRDIS *K1* and *K2* unsaturated off-axis images were obtained using the same technique used for the NIRC2 data and are discussed in Sections 3 and 4.

2.2.2. New Observations

HD 131399 was observed on 2017 March 15 (098.C-0864 (A), PI: Hinkley) with SPHERE IRDIS in dual polarimetric

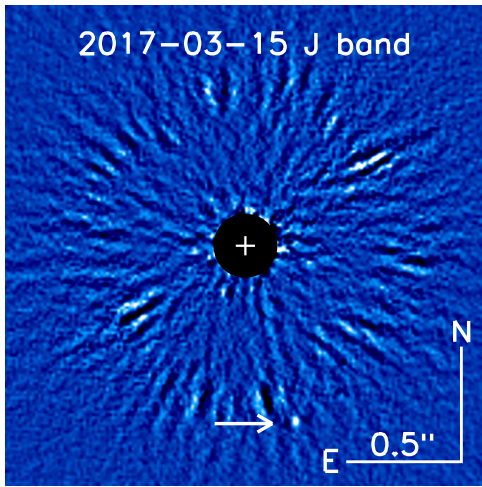


Figure 5. PSF-subtracted image of HD 131399 Ab obtained with SPHERE IRDIS in 2017 in the *J* band. The image design is similar to Figure 1.

imaging (DPI) mode at *J* ($\lambda_{\text{eff}} = 1.23 \mu\text{m}$) as part of a program to measure the polarization of directly imaged planets. The same “star-center,” “flux,” and “coronagraphic” sequences, as were executed for the public DBI observations described in Section 2.2.1, were carried out in this program, for a total on-source integration time of 0.36 hr. Calibration data were obtained on subsequent days, following the standard calibration plan for the instrument.

The raw data were reduced following the same procedure as the public IRDIS DBI data. However, since the data were taken in DPI mode, images in the two quadrants, corresponding to two orthogonal polarization states, were summed to create total-intensity images. PSF-subtracted (see Figure 5) photometric and astrometric measurements were also obtained using the two postprocessing pipelines and the same parameters as described previously. Finally, the measurements from these two pipelines were combined with a weighted mean as for the other data sets and are reported in Table 5 and in Table 6.

2.3. New Keck/NIRC2 Observations

HD 131399 A was observed with the narrow camera of Keck/NIRC2 in the *L'* filter ($\lambda_{\text{eff}} = 3.72 \mu\text{m}$) serving as its own natural guide star on consecutive nights 2017 February 7 and 8. We used only the February 8 data in our final analysis because high winds and poor seeing degraded the quality of the February 7 data. This resulted in 166 exposures of 0.9 s and 30 coadds each for a total integration time of 1.25 hr. The 400 mas diameter coronagraph mask occulted the star in all exposures, and the instrument was in vertical angle mode to enable ADI. The raw data were reduced with a custom set of tools that subtracts dark current and thermal background and then aligns all frames to a common star position.

To recover HD 131399 Ab, we subtracted the stellar halo and speckle pattern using a customized LOCI algorithm (“locally optimized combination of images”; Lafrenière et al. 2007). We tested various levels of algorithm aggressiveness and present here a compromise between noise suppression and astrophysical source throughput, with LOCI parameter values of $N_8 = 0.3$, $W = 10$ px, $dr = 10$ px, $g = 0.9$, and $N_a = 10$ following the conventional definitions in Lafrenière et al. (2007). Speckle suppression in this data set particularly benefited from temporal proximity of reference images (i.e.,

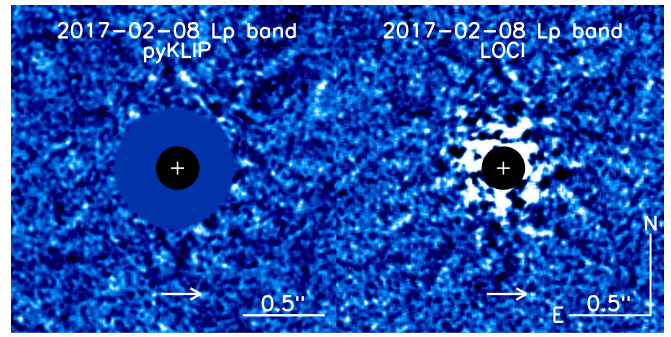


Figure 6. PSF-subtracted images of HD 131399 Ab obtained with NIRC2 in 2017 at *L'* using pyKLIP (left) and LOCI (right). No source is significantly detected at the location of HD 131399 Ab (arrow). The image design is similar to Figure 1.

small N_8), possibly due to high air mass and varying seeing conditions diminishing PSF stability. The PSF-subtracted frames were rotated to place north up and collapsed into a final median image (see Figure 6, left). We also performed a separate reduction using pyKLIP on the same aligned frames. The algorithm divided images into annuli that were 20 pixels wide radially and further divided into 10 azimuthal subsections each. To build the model of the stellar PSF, we used the first 50 KL basis vectors of the 200 most-correlated reference images where HD 131399 Ab moved at least three pixels due to the ADI observing method (Figure 6, right).

In neither reduction was a source detected at the location of Ab with greater than 3σ confidence over the background noise levels (see Figure 6). Therefore, we report only a lower limit of 11.10 mag for its *L'* contrast.

HD 131399 B and C are detected in individual images in which HD 131399 A is unocculted and unsaturated, so we performed astrometry on brighter component B as an independent confirmation of our SPHERE astrometry. To locate A, we fitted it with a bivariate Gaussian function using a least-squares minimization. We then jointly fitted B and C using the PSF of A as a template for a least-squares minimization. We repeated this process for six images divided between two dither positions, and we report in Section 4 the mean separation and PA of B from those fits. The measurement errors were estimated as the standard deviation of the separation and PA across the six images. The final astrometric uncertainties were calculated as the quadrature sum of these measurement errors, the star registration error estimated at 5 mas, and the plate scale error of $0.004 \text{ mas pixel}^{-1}$ and position angle offset error of 0.02 deg (Service et al. 2016).

3. Spectrophotometric Analysis

3.1. SED and Mass of HD 131399 A

A flux-calibrated spectrum of the primary was required to convert the measured contrast between HD 131399 A and Ab within the SPHERE and GPI data sets. As no near-IR spectrum of HD 131399 A was available within the literature, we used a stellar evolutionary model and a grid of synthetic stellar spectra to fit the observed SED of HD 131399 A. From this fit we estimated both the spectrum of the star and synthetic photometry within the GPI and SPHERE passbands. The properties of HD 131399 A and Ab are given in Table 2.

Optical and near-infrared photometry were found in the literature for a number of systems: Tycho ($B_T V_T$; Høg et al. 2000), *Hipparcos* (H_p ; ESA 1997), and 2MASS (JHK_s ;

Skrutskie et al. 2006). Optical color indices in the Strömgren *uvby* (Hauck 1986) and Geneva⁴⁰ systems were also found (Mermilliod et al. 1997). An uncertainty of 0.1 mag was assumed for these color indices as none were presented within the literature. As the angular separation between HD 131399 A and BC is comparable to the angular resolution of the telescopes used to obtain these photometric measurements, the measures reported within these catalogs are of the blended system rather than of HD 131399 A. At shorter wavelengths, the contrast between HD 131399 A and the BC pair is large enough that the faint pair has a negligible impact on the optical photometry of the system. At longer wavelengths, this effect becomes significant, approximately 10% at *K*. To account for this, we simultaneously fit the combined flux of the three stars using the photometric measurements of the system described previously and apparent magnitudes of the BC pair obtained from the literature.

We used the `emcee` parallel-tempered affine-invariant MCMC sampler to fully explore the parameter space and estimate uncertainties on the near-IR spectrum of HD 131399 A. At each step within a chain, an age t , parallax π , mass for each component M_A , M_B , M_C , and extinction A_V were selected. We used a Gaussian prior for age (16 ± 7 Myr) and a Gaussian (10.20 ± 0.70 mas) multiplied by a π^{-4} power law—to account for a uniform space density of stars as expected at the distance to HD 131399 Ab—as the prior for parallax. The prior on the three masses was based on the Kroupa (2001) initial mass function. Age and mass were converted into an effective temperature (T_{eff}) and surface gravity ($\log g$) using the MIST evolutionary models (Choi et al. 2016; Dotter 2016). Given the rapid rotation seen for young early-type stars (e.g., Strom et al. 2005), we used the evolutionary models that incorporated stellar rotation ($v/v_{\text{crit}} = 0.4$). A solar metallicity was assumed, consistent with the observed metallicity of other stars within the ScoCen association (Bubar et al. 2011).

Synthetic photometry and color indices were computed from a BT-NEXTGEN model atmosphere (Allard et al. 2012)⁴¹ of the appropriate T_{eff} and $\log g$, scaled by the R^2/d^2 dilution factor, where R is the radius of the star computed from M and $\log g$, and $d = 1/\pi$ is the distance to the star. Model atmospheres at temperatures and surface gravities between grid points were estimated using a linear interpolation of the logarithm of the flux. These synthetic spectra were first reddened using the selected A_V value and the Cardelli et al. (1989) extinction law, and then convolved with the throughput of each filter to obtain synthetic photometry. Filter transmission profiles and zero points were obtained from Mann & von Braun (2015) for the optical filters, and from Cohen et al. (2003) for the 2MASS filters. A probability ($\ln p = -\chi^2/2$) was calculated at each step by comparing the synthetic magnitudes and color indices for the blended system to the observed values, the synthetic magnitudes of the B and C components to the K_{ISPH} contrasts (the SPHERE/IRDIS filters are described later in this section) given in W16 ($\Delta K_{\text{ISPH}} = 1.86 \pm 0.10$ mag and 3.86 ± 0.10 mag for B and C, respectively), and the apparent H_p magnitude for the blended BC pair of 11.161 ± 0.187 mag reported in the Catalog of the Components of Double and Multiple Stars (CCDM; Dommangen & Nys 2002).

Table 3
Stellar Parameters Derived from SED Fit

Property	Unit	HD 131399 system		
t	Myr	$21.9^{+4.1}_{-3.8}$		
π	mas	$9.27^{+0.33}_{-0.37}$		
d	pc	$107.9^{+4.5}_{-3.7}$		
A_V	mag	0.22 ± 0.09		
		A	B	C
M	M_{\odot}	$2.08^{+0.12}_{-0.11}$	0.95 ± 0.04	0.35 ± 0.04
T_{eff}	K	9480^{+420}_{-410}	4890^{+190}_{-170}	3460 ± 60
$\log g$	[dex]	4.32 ± 0.01	4.40 ± 0.03	4.45 ± 0.05

We initialized 512 walkers at each of 16 different temperatures to ensure the parameter space was fully explored; lower temperatures sample the posterior distribution, while higher temperatures fully explore the prior distributions. Each walker was advanced for 1000 steps as an initial burn-in stage, and then advanced for a further 9000 steps to fully sample the posterior distribution for each parameter. The median and 1σ range calculated from the posterior distribution of the six fitted parameters (t , π , M_A , M_B , M_C , A_V), and that of the derived T_{eff} and $\log g$ for each component, are given in Table 3.

We find a mass of $2.08^{+0.12}_{-0.11} M_{\odot}$, a temperature of 9480^{+420}_{-410} K, and a surface gravity of $\log g = 4.32 \pm 0.01$ [dex] for HD 131399 A. These parameters are consistent with an A1V spectral type (Houk 1982) at an age of 16 Myr. The extinction toward HD 131399 of $A_V = 0.22 \pm 0.09$ mag estimated from the SED fit is consistent with literature estimates that range from 0.14 to 0.28 mag (de Geus et al. 1989; Sartori et al. 2003; Chen et al. 2012). The photometric distance of $107.9^{+4.5}_{-3.7}$ pc is 1.2σ discrepant from the trigonometric distance of $98.0^{+7.2}_{-6.3}$ pc from the *Hipparcos* parallax (van Leeuwen 2007). Repeating the SED fit using only a $p(\pi) \propto \pi^{-4}$ prior, corresponding to an assumed uniform space density of stars, results in a similar photometric distance of $112.2^{+5.2}_{-5.1}$ pc. The stated uncertainties on the fitted parameters do not incorporate any model uncertainty and are therefore likely underestimated.

The SED of each component and that of the blended system are shown in Figure 7. Uncertainties on the near-IR portion of the SED of HD 131399 A, estimated by sampling randomly from the posterior distributions (t , π , M_A , and A_V), ranged between 1.5% and 2.0%. The SED of A was degraded to the spectral resolving power of the GPI and SPHERE IFS observations to convert the contrasts between HD 131399 A and Ab measured in Section 2 into apparent fluxes for Ab.

Synthetic photometry of HD 131399 A was also computed for the GPI, SPHERE, and NIRC2 filters to convert the measured broadband contrasts between A and Ab into apparent magnitudes for Ab. Filter transmission profiles for the GPI filters were obtained from the GPI DRP and were combined with a median Cerro Pachón atmosphere (4.3 mm precipitable water vapor) at one air mass (Lord 1992). The SPHERE IRDIS filter curves were obtained from the ESO website,⁴² while the IFS throughput was assumed to be uniform between 0.96 and $1.11 \mu\text{m}$ at *Y*, 1.13 – $1.42 \mu\text{m}$ at *J*, and 1.44 – $1.64 \mu\text{m}$ at *H*. These filter curves were combined with a median Paranal atmosphere (2.5 mm precipitable water vapor) at one air mass (Moehler

⁴⁰ <http://obswww.unige.ch/gcpd/gcpd.html>

⁴¹ <https://phoenix.ens-lyon.fr/Grids/BT-NextGen/AGSS2009/SPECTRA/>

⁴² <https://www.eso.org/sci/facilities/paranal/instruments/sphere/inst/filters.html>

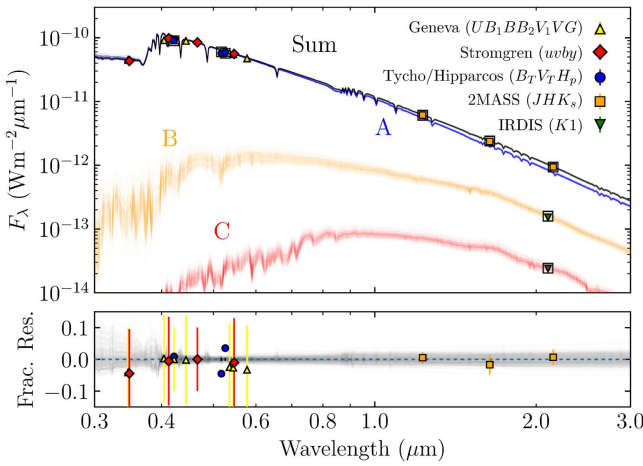


Figure 7. Top panel: 100 realizations of the spectral energy distribution of HD 131399 A (blue), B (orange), and C (red) drawn randomly from the MCMC posterior distributions described in Section 3.1. The SED of the blended system is also shown (black). Photometric measurements of the system, and of the B and C components, are plotted as solid symbols: Tycho/Hipparcos (blue circle), 2MASS (orange square), IRDIS (green downward triangle). Predicted fluxes in these systems are shown as open squares. The Geneva (yellow upward triangle) and *uvby* (red diamond) fluxes are tied to the predicted flux in the *B/b* filter. Bottom panel: fractional residuals for each of the 100 SEDs of the blended system (gray curves) and for the photometric measurements (symbols as before).

et al. 2014). The NIRC2 *L'* filter curve was obtained from the Keck website⁴³ and was combined with a Maunakea atmosphere (Lord 1992) with 1.6 mm of precipitable water vapor at two air masses (chosen to match the observing conditions on 2017 February 08). The throughput of the GPI and SPHERE filters are plotted in Figure 8. Zero points and effective wavelengths for all of the filters were estimated using the CALSPEC Vega spectrum⁴⁴ (Bohlin 2014) and are given in Table 4. The properties of the H_{GPI} and $K1_{\text{GPI}}$ filters match those derived from observations of the white dwarf HD 8049 B presented in De Rosa et al. (2016).

3.2. SED and Spectral Type of HD 131399 Ab

Photometric measurements, S/N, and spectra obtained from GPI, from NIRC2, from the new SPHERE data, from our reanalysis of the SPHERE data, and from those published by W16 are given in Table 5 and Figure 9. The full SEDs for both HD 131399 A and Ab, from both the SPHERE and GPI data sets, is given in Tables 8 and 9 in the Appendix. The measurements provide *YJH* contrasts consistent at the 1σ level between the four SPHERE sets, between our average SPHERE contrasts and those published in W16, and between our average SPHERE and average GPI measurements, with the caveat that the GPI and SPHERE filters are different (especially *H*, see Figure 8). However, the reanalyzed SPHERE contrast at *K1* and *K2* differs significantly (2σ at *K1* and 1σ at *K2*) from that of W16. The origin of these discrepancies remains unclear since the *K1* contrasts of HD 131399 B and C are in agreement between our reanalysis ($\Delta K1 = 1.95 \pm 0.07$ and 3.84 ± 0.10 mag) and that of W16 ($\Delta K1 = 1.86 \pm 0.10$ and 3.86 ± 0.10 mag for B and C, respectively).

The GPI spectrum is flat, except for some correlated noise, at a high confidence level, without any indication of the methane

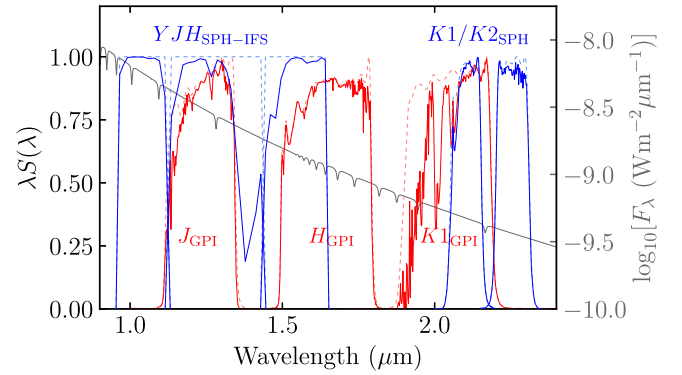


Figure 8. Energy response functions for the GPI (red curves) and SPHERE (blue curves) filters, following the definitions of Bessell & Murphy (2012). The response functions are shown before (dashed curves) and after (solid curves) multiplication by either a median Cerro Pachón or Paranal atmosphere. The J_{SPH} filter is not plotted as it is very similar to the J_{GPI} filter. Plotted in gray is the CALSPEC spectrum of Vega used to compute the zero points given in Table 4.

Table 4
Atmosphere Throughput-corrected Filter Properties

Filter	λ_{eff} (μm)	W_{eff} (μm)	Zero point ($10^{-9} \text{ W m}^{-2} \mu\text{m}^{-1}$)
J_{GPI}	1.23	0.19	3.12
H_{GPI}	1.64	0.27	1.15
$K1_{\text{GPI}}$	2.06	0.20	0.50
$Y_{\text{SPH-IFS}}$	1.03	0.16	5.65
$J_{\text{SPH-IFS}}$	1.24	0.24	2.99
$H_{\text{SPH-IFS}}$	1.54	0.19	1.41
J_{SPH}	1.23	0.20	3.11
$K1_{\text{SPH}}$	2.10	0.09	0.47
$K2_{\text{SPH}}$	2.25	0.11	0.36
L'	3.72	0.59	0.054

Note. The subscript SPH refers to the SPHERE IRDIS filters and SPH-IFS to the derived SPHERE IFS filters, to differentiate between them.

absorption beyond $1.6 \mu\text{m}$ that is expected in the spectra of mid-T dwarfs. The GPI spectrum is also in agreement with that of the combined four SPHERE sets in both the *J* and *H* bands. However, the published SPHERE *H*-band spectrum (W16) peaks at $1.61 \mu\text{m}$, a peak that does not appear either in the GPI spectrum or in our reanalysis. The peak flux is also nearly twice the plateau of the other two spectra. These differences might be explained by (1) a different technique used to combine the multiple data sets or (2) the technique used to extract the photometry of Ab, with different techniques being biased by nearby speckles to varying degrees. The presence of a speckle close to HD 131399 Ab in the 2016 March 17 SPHERE data set may be significantly biasing the spectrum at $\sim 1.6 \mu\text{m}$ (see Section 2.2), with the spectrum being featureless in the three other sets.

3.2.1. Color-Magnitude and Color-Color Diagrams

The physical nature of HD 131399 Ab can be assessed by placing it on a color-magnitude or color-color diagram (CMD or CCD) and comparing it to the location of other objects of known spectral types. A library of medium-resolution ($R \sim 200$) near-IR spectra of stars and brown dwarfs was compiled from the SpeX Prism library⁴⁵ (Burgasser 2014), the

⁴³ <https://www2.keck.hawaii.edu/inst/nirc2/filters.html>

⁴⁴ ftp://ftp.stsci.edu/cdbs/current_calspec/alpha_lyr_stis_008.fits

⁴⁵ <http://pono.ucsd.edu/~adam/browndwarfs/spexprism>

Table 5
Contrast Measurements of HD 131399 Ab

UT Date	Instrument	Filter	Contrast (mag.)	S/N
2015 Jun 12	(SPH W16)	(J)	$(13.23 \pm 0.20)^a$	(13.2)
	(SPH W16)	(H)	$(12.99 \pm 0.20)^a$	(15.5)
	(SPH W16)	(K1)	$(12.45 \pm 0.10)^a$	(23.5)
	(SPH W16)	(K2)	$(12.64 \pm 0.16)^a$	(11.9)
	SPH-IFS	<i>Y</i>	13.73 ± 0.33^b	4.0^b
		<i>J</i>	13.19 ± 0.23^c	6.3^c
		<i>H</i>	12.94 ± 0.24^d	5.3^d
	SPH-IRDIS	<i>K1</i>	12.75 ± 0.11	11.4
2016 Mar 06	SPH-IRDIS	<i>K2</i>	12.76 ± 0.41	6.1
	SPH-IFS	<i>Y</i>	13.67 ± 0.44^b	3.3^b
		<i>J</i>	13.32 ± 0.38^c	4.6^c
		<i>H</i>	13.09 ± 0.29^d	3.4^d
2016 Mar 17	SPH-IRDIS	<i>K1</i>	12.69 ± 0.11	9.6
	SPH-IRDIS	<i>K2</i>	12.32 ± 0.36	5.7
	SPH-IFS	<i>Y</i>	13.82 ± 0.45^b	2.7^b
		<i>J</i>	13.32 ± 0.39^c	5.5^c
		<i>H</i>	13.19 ± 0.36^d	3.2^d
	SPH-IRDIS	<i>K1</i>	12.58 ± 0.11	12.3
2016 May 07	SPH-IRDIS	<i>K2</i>	12.31 ± 0.31	5.7
	SPH-IFS	<i>Y</i>	$>13.74^b$	$1.2^{b,e}$
		<i>J</i>	13.47 ± 0.25^c	$4.4^{c,e}$
		<i>H</i>	$>13.11^d$	$2.0^{d,e}$
	SPH-IRDIS	<i>K1</i>	12.79 ± 0.10	14.0
	SPH-IRDIS	<i>K2</i>	12.54 ± 0.17	7.2
2017 Feb 08	NIRC2	<i>L'</i>	>11.10	...
2017 Feb 14	GPI	<i>K1</i>	12.61 ± 0.17	6.2
2017 Feb 15	GPI	<i>H</i>	12.81 ± 0.09	10.6
2017 Feb 16	GPI	<i>J</i>	13.37 ± 0.17	7.7
2017 Mar 15	SPH-IRDIS	<i>J</i>	13.50 ± 0.14	7.6
2017 Apr 20	GPI	<i>H</i>	12.86 ± 0.09	12.0

Notes.

^a Wagner et al. (2016) reports only one apparent magnitude measurement for all four epochs.

^b Obtained by averaging channels over 0.96–1.11 μm .

^c Obtained by averaging channels over 1.13–1.42 μm .

^d Obtained by averaging channels over 1.44–1.64 μm .

^e Gaussian cross-correlation instead of FMMF used for S/N.

IRTF Spectral Library⁴⁶ (Cushing et al. 2005), and the Montreal Spectral Library⁴⁷ (e.g., Gagné et al. 2015; Robert et al. 2016). The spectra were normalized to literature 2MASS or MKO photometry. Parallax measurements were obtained from Dupuy & Liu (2012), Dupuy & Kraus (2013), Liu et al. (2016) (and references therein) for the brown dwarfs, and from van Leeuwen (2007) for the stars. Synthetic magnitudes in the GPI and SPHERE filters were calculated for each object using the filter curves shown in Figure 8. We generated an M_J versus $J_{\text{GPI}} - H_{\text{GPI}}$ CMD, and $K1_{\text{SPH}} - K2_{\text{SPH}}$ versus $J_{\text{GPI}} - H_{\text{GPI}}$ and $K1_{\text{GPI}} - K1_{\text{SPH}}$ versus $J_{\text{GPI}} - H_{\text{GPI}}$ CCDs, all of which are plotted in Figure 10. A $K1_{\text{GPI}} - L'$ versus $J_{\text{GPI}} - H_{\text{GPI}}$ CCD was also created, shown in Figure 11 using literature MKO L' photometry, or estimated from the *WISE* *W1* to MKO L' color transformation given in De Rosa et al. (2016). No extinction correction was applied to the colors, although this is expected to be small ($A_V \sim 0.22$, $A_J \sim 0.06$, $A_H \sim 0.04$ mag) at the distance to HD 131399 A, increasing to $A_V \sim 1$ mag ($A_J \sim 0.29$, $A_H \sim 0.18$ mag) due to a combination of the

extinction within the UCL region and the predicted extinction from galactic dust. The locations of field-gravity standards for spectral types later than M0 are highlighted in each diagram (Burgasser et al. 2006b; Kirkpatrick et al. 2010).

Using the contrasts between A and Ab reported in Table 5 and the synthetic magnitudes for A calculated in Section 3.1, we derive colors of $J_{\text{GPI}} - H_{\text{GPI}} = 0.54 \pm 0.18$ mag, $K1_{\text{SPH}} - K2_{\text{SPH}} = 0.22 \pm 0.14$ mag, and $K1_{\text{GPI}} - K1_{\text{SPH}} = -0.09 \pm 0.18$ mag for HD 131399 Ab. We also derive an upper limit of $K1_{\text{GPI}} - L' > 1.52$ mag, using the detection limit from the NIRC2 L' observations. On each of the CCDs in Figure 10, HD 131399 Ab is consistent with the colors of M dwarfs and is significantly different from the observed colors of early to mid-T dwarfs, a discrepancy that is most significant for the measured $K1_{\text{SPH}} - K2_{\text{SPH}}$ color. As a comparison, the upper limit on the color of 51 Eri b of $K1_{\text{SPH}} - K2_{\text{SPH}} < -0.58 \pm 0.14$ mag (Samland et al. 2017) is more than 3σ discrepant. The position of HD 131399 Ab on the $K1_{\text{GPI}} - L'$ versus $J_{\text{GPI}} - H_{\text{GPI}}$ CCD (Figure 11) only excludes mid to late Ls and late Ts; M dwarfs and mid-Ts are consistent with the measured $J_{\text{GPI}} - H_{\text{GPI}}$ color and the $K1_{\text{GPI}} - L'$ upper limit.

While the absolute M_J magnitude is consistent with an early to mid-T dwarf, the $J - H$ color is far less diagnostic (Figure 10, top panel). If the distance to HD 131399 Ab was not known, the only constraint on the spectral type from the $J - H$ color would be that it is between mid-G and late-M, or between early and mid-T. Excluding the $J - H$ color, the only evidence in support of the bound T-dwarf companion hypothesis from these color-magnitude and color-color diagrams is the absolute J -band magnitude, which relies on the assumption that it is at the same distance as HD 131399 A ($98.0^{+7.2}_{-6.3}$ pc), and the upper limit on the $K1_{\text{GPI}} - L'$ color, which is consistent with either an M dwarf or a mid-T dwarf. The remaining color indices plotted in Figure 10 except for $J - H$ are inconsistent with the observed colors of field T dwarfs. Instead, they are consistent with those of field M dwarfs, which would require HD 131399 Ab to be at a significantly greater distance of between 1 and 10 kpc and not physically associated with HD 131399 A.

3.2.2. Comparison to Spectra of Field Objects

One of the primary reasons why instruments such as GPI and SPHERE use an integral field spectrograph is the ability to immediately distinguish between background stars, which have relatively featureless spectra, and cool substellar companions with strong molecular absorption features. While the $J - H$ of HD 131399 Ab is consistent with both stars between mid-G and late-M and brown dwarfs between early-T and mid-T (Figure 10), the JH spectra of these two groups of objects are significantly different. With a high enough S/N spectrum, it should be possible to confirm or reject the presence of strong molecular absorption features that are seen in the spectra of cool brown dwarfs.

We compared the GPI and our SPHERE spectra of HD 131399 Ab to the library of near-IR spectra described in Section 3.2.1. The spectrum of each object within the library was degraded to the resolution of the GPI/SPHERE spectra by convolving the spectrum with a Gaussian of appropriate width. The scaling factor that minimized χ^2 was found analytically for the comparison to the SPHERE data and numerically for the comparison to the GPI data, where the separate bands were allowed to float independently to account for uncertainties in

⁴⁶ http://irtfweb.ifa.hawaii.edu/~spex/IRTF_Spectral_Library

⁴⁷ <https://jgagneastro.wordpress.com/the-montreal-spectral-library/>

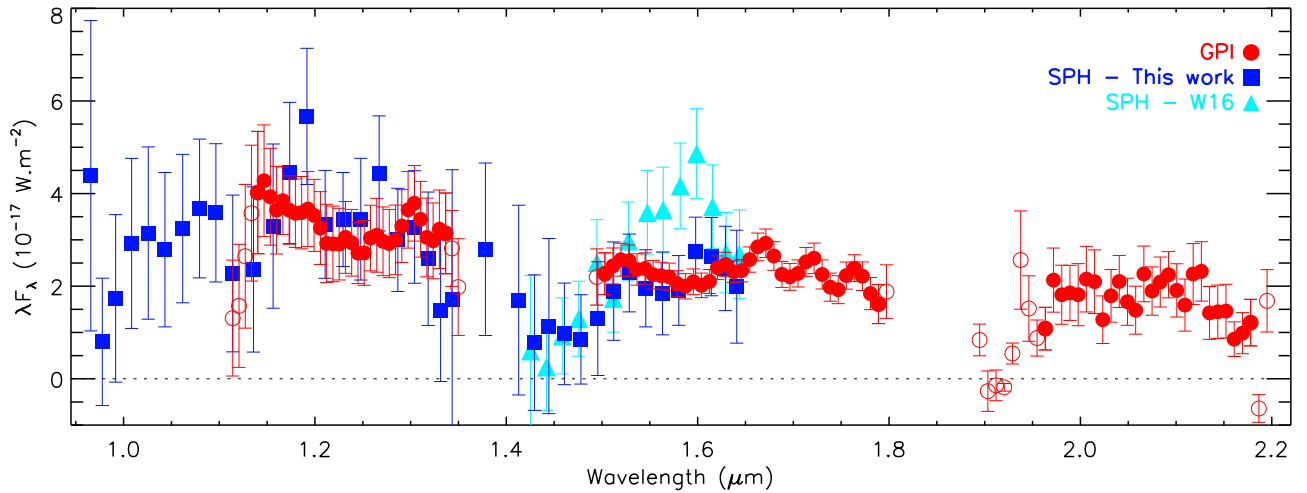


Figure 9. *YJHK1* spectra of HD 131399 Ab extracted from GPI data (red circles, resolving power of 45) and all SPHERE data (blue squares, resolving power of 30). The *H*-band spectrum published by W16 is also shown for comparison (cyan triangles). The *H*-band flux is consistent between SPHERE and GPI, but we argue that the shape of the published SPHERE spectrum may be biased by the speckle discussed in Figure 4. Open circles correspond to GPI wavelength channels where the atmospheric+instrument+filter throughput is lower than 50% (see Figure 8).

the satellite spot ratio (Maire et al. 2014). Wavelengths with a throughput lower than 50% (Figure 8) were excluded from the fit.

The fits of the HD 131399 Ab SPHERE and GPI spectra to objects ranging from a spectral type of G0 to T6 are shown in Figure 12, with the minimum χ^2_ν plotted as a function of spectral type in Figure 13. The lower S/N of the SPHERE spectrum is apparent (Figure 12, left panel), with $\chi^2_\nu < 1$ for all spectral types except for those between L5–L9 and T5–T9 (Figure 13). The SPHERE spectrum is fit well ($\chi^2_\nu < 1$) by objects that have significantly different spectral morphologies: from an M5 dwarf (Wolf 47, $\chi^2_\nu = 0.50$), with a relatively featureless spectrum, to a T2 (2MASS J12545393–0122474, $\chi^2_\nu = 0.63$) or a T4 brown dwarf (2MASS J2254188+312349, $\chi^2_\nu = 0.66$), which exhibit strong molecular absorption features. The *YJ* portion of the spectrum is consistent within the uncertainties with spectral types earlier than T6, providing little diagnostic power. The *H*-band spectrum exhibits a rising slope toward longer wavelengths, similar to what is seen in the spectra of brown dwarfs later than L5, although this slope is not measured at a significant level given the low S/N.

The improved S/N and greater wavelength coverage of the GPI *JHK1* spectrum provide for better constraints on the spectral type of HD 131399 Ab (Figure 12). The spectrum appears relatively featureless, consistent with the near-IR SED of stars with a spectral type earlier than mid-M. The red end of the *H* spectrum appears to modulate on a characteristic length scale consistent with the intrinsic resolution of GPI at *H*. It is likely this is correlated noise due to the presence of speckles at those wavelengths rather than an astrophysical signal. The GPI spectrum is fit well by both an M0 (BD+33 1505, $\chi^2_\nu = 0.67$) and an M5 (Wolf 47, $\chi^2_\nu = 0.67$) dwarf. Earlier spectral types are also fit well ($\chi^2_\nu < 1$), although these would require HD 131399 Ab to be at a significantly greater distance, inconsistent with the predictions of Galactic population models described in Section 4.4. The minimum χ^2_ν for the fit of the GPI spectrum as a function of spectral type plotted in Figure 13 displays a trend similar to that for the fit of the SPHERE data, with later spectral

types being more strongly excluded. Objects earlier than a spectral type of L0 fit the spectrum relatively well ($\chi^2_\nu < 1$). One limitation of this analysis is the relative dearth of known young/low-surface-gravity T dwarfs. The three within the library—HN Peg B (T2.5, $\chi^2_\nu = 3.0$, Luhman et al. 2007), 2MASS J11101001+0116130 (T5.5, $\chi^2_\nu = 8.9$, Burgasser et al. 2006a), and CFBDSIR J214947.2–040308.9 (T7, $\chi^2_\nu = 16.0$, Delorme et al. 2013)—are all poor fits to the GPI spectrum of HD 131399 Ab.

Using the color–magnitude and color–color diagrams in Figure 10 and the fit of the SPHERE and GPI spectra to stars and brown dwarfs in Figures 12 and 13, we find no strong evidence to suggest that HD 131399 Ab has a near-IR SED consistent with that of a cool planetary-mass companion of early to mid-T spectral type. We do not detect the characteristic H₂O and CH₄ absorption in the GPI spectrum at either *J* or, more significantly, at *H*, nor do we detect it based on the measured $K1_{\text{SPH}} - K2_{\text{SPH}}$ color, which is sensitive to methane absorption in the spectra of T dwarfs (Figure 10, middle panel). Instead, our analysis of the near-IR SED suggests it has a relatively featureless spectrum and has near-IR colors that are consistent with those of a low-mass star.

4. Astrometric Analysis and Discussion

Measurements on the detector chip, calibration values, and calibrated astrometric positions for each data set are given in Table 6. At each epoch, both IFS and IRDIS measurements agree within the uncertainties. For reference, published calibration values and calibrated positions from W16 are also provided, although which SPHERE detector was being used was not specified. Our reanalysis of the SPHERE data shows a significant change in separation (~ 22 mas), much larger than that reported by W16 from an analysis of the same data (~ 9 mas). Comparing the weighted mean of our IFS and IRDIS separation at each epoch to the separations reported by W16 (and using their 2016 March astrometry for both the 2016 March 06 and 2016 March 17 epochs), we find offsets of $+1.45$, -0.80 , -2.31 , and -1.67σ , and thus a much larger

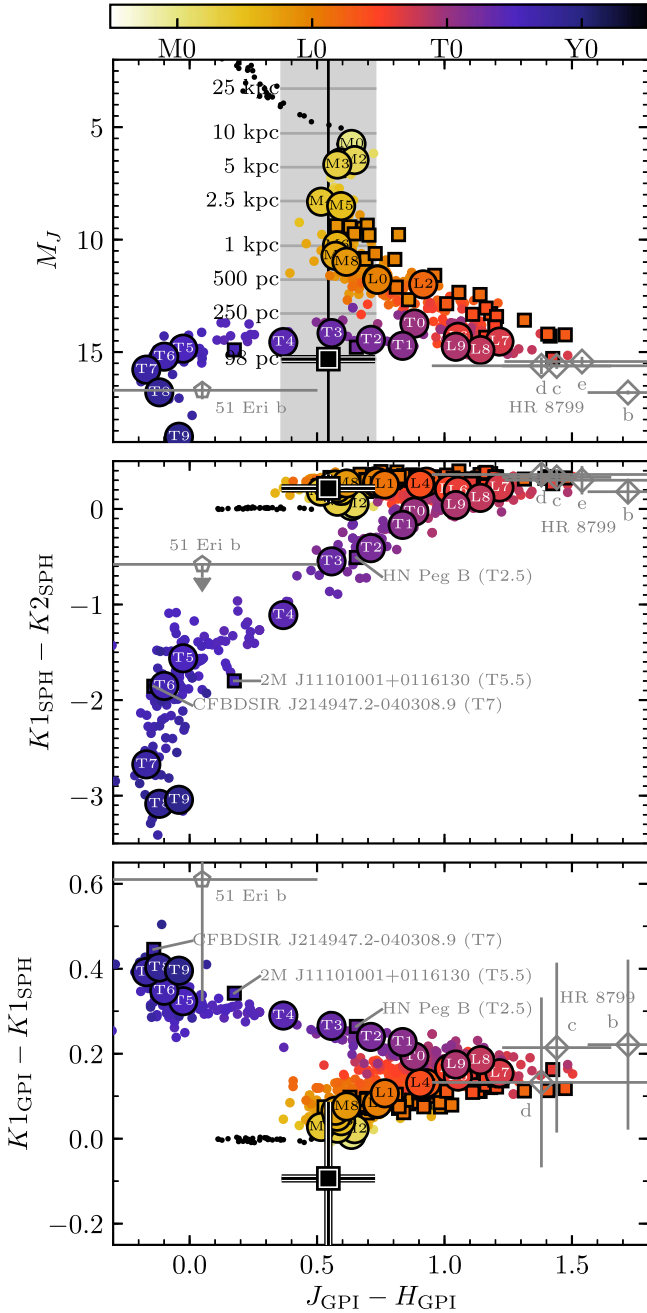


Figure 10. CMD (top panel) and CCDs (middle and bottom panels) showing HD 131399 Ab (black square) relative to stars, brown dwarfs, and directly imaged planets. Low-gravity (VL-G/ γ) objects are plotted as squares, and field-gravity standards are highlighted (Burgasser et al. 2006b; Kirkpatrick et al. 2010). Also highlighted are several young T dwarfs, as well as 51 Eri b (gray pentagon, Samland et al. 2017) and the HR 8799 planets (gray diamonds, Barman et al. 2011; Skemer et al. 2012; Currie et al. 2014; Ingraham et al. 2014a; Zurlo et al. 2016). Stars with spectral type earlier than M0 are plotted as black points. In addition to the absolute magnitude assuming a distance of 98 pc, the absolute magnitude if it is a background object is also shown for a range of distances (top panel).

projected velocity. In addition, our position angles are systematically offset by one degree (or $\sim 0.3\lambda/D$) compared to W16.

We investigated the origin of this one-degree offset between our data reduction and that of W16. The preprocessing and reduction pipelines are similar but not exactly the same version, which mostly has a negligible impact except on the instrument angles. We find that the parallactic angle correction ϵ is

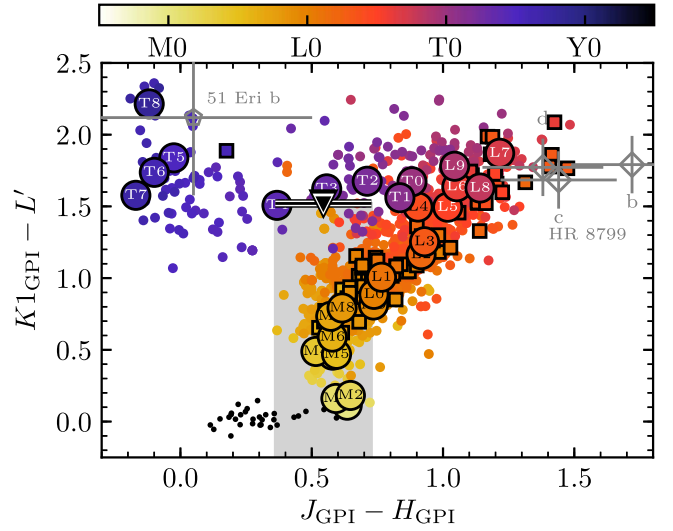


Figure 11. $K1_{\text{GPI}} - L'$ vs. $J_{\text{GPI}} - H_{\text{GPI}}$ CCD showing HD 131399 Ab (black triangle, upper limit on $K1_{\text{GPI}} - L'$ denoted by shaded gray region) relative to stars, brown dwarfs, and directly imaged planets. Symbols and colors are as in Figure 10.

insignificant (of the order of 0.05 deg). However, the calibration angles and the instrument angles used in W16 differ from the latest calibrated values (Maire et al. 2016) that were used in our analysis. These differences would make our discrepancies even higher by further lowering their position angles by 0.1–0.25 deg for the IFS and 0.01–0.18 deg for IRDIS. As a cross-check of the astrometry, we looked at the separations and position angles of HD 131399 B. We find they are consistent at the 1σ level with that of W16 (see Table 7), though we find systematically higher (by more than the total errors reported by W16) position angles. The systematically larger separations are here due to the larger (by 0.2%) calibration plate scale. Our astrometry is independently confirmed with the Keck/NIRC2 data at 3149 ± 7 mas and 222.3 ± 0.5 deg in 2017 February, with the orbital motion being negligible at 400 au over one year. Another plausible explanation for this offset is measurement biases on HD 131399 Ab. Our reanalysis leads to consistent astrometry using multiple PSF subtraction and astrometric extraction algorithms. Remaining biases due to differences in the way the astrometry was measured between this work and that of W16, however, could exist.

When a candidate companion is detected next to a star by direct imaging, there are typically two scenarios that are considered: the candidate is a common proper motion companion orbiting the target star, or the candidate is at infinite distance with no proper motion. We investigate these possibilities with the new GPI and SPHERE astrometry as well as the revised SPHERE points in the following sections.

4.1. Escape Velocity

Before fitting an orbit, we first consider whether the projected velocity of HD 131399 Ab is less than the escape velocity of the system, as should be true for a bound orbit. The projected velocity (in R.A. and decl.) will in fact be a lower limit on the total velocity, since the total velocity will also include the unmeasured component along the line of sight. We compute projected velocity by fitting straight lines to the astrometry in R.A. and decl. as a function of time. This too

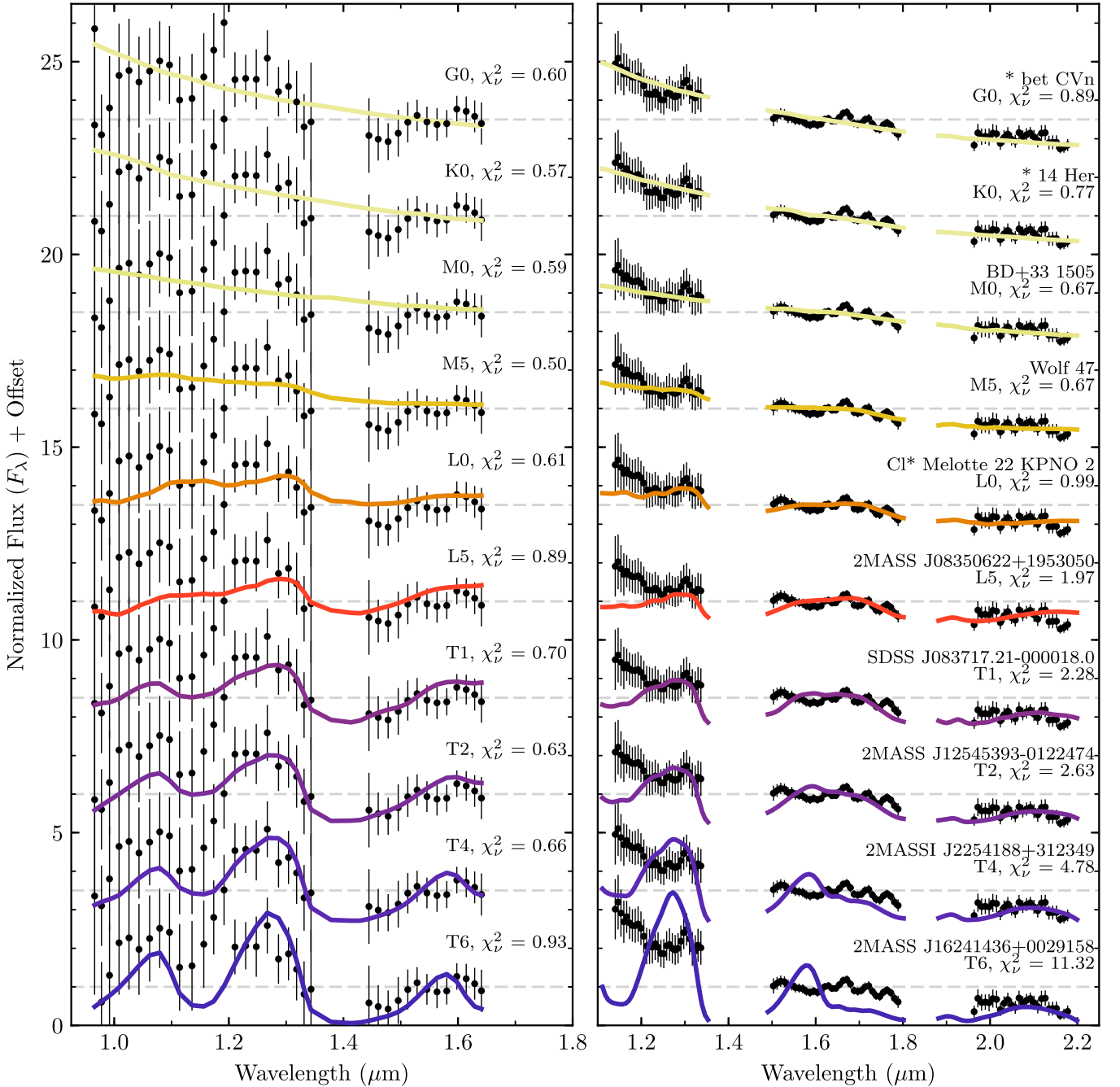


Figure 12. Near-infrared spectra of representative objects of spectral types ranging from G0 to T6 compared to the measured spectrum of HD 131399 Ab obtained from our analysis of the SPHERE observations (left panel) and from the new GPI observations presented in this study (right panel). The same comparison object is plotted in both panels for each spectral type. Spectra were obtained from Rayner et al. (2009) (G0, K0, M5), Kirkpatrick et al. (2010) (M0), Burgasser & McElwain (2006) (L0), Chiu et al. (2006) (L5), Burgasser et al. (2006b) (T0), Cushing et al. (2005) (T2), Burgasser et al. (2004) (T4), and Burgasser et al. (2006a) (T6).

represents a lower limit on the velocity, since any curvature not captured by the linear fit would represent a higher velocity. This value is then converted to a physical velocity (km s^{-1}) using the distance to the system.

Escape velocity is given by $v_{\text{esc}} = \sqrt{2GM/r}$, where G is the gravitational constant, M is the mass of the star, and r is the total separation between star and planet. In the direct imaging case, this corresponds to an upper limit on escape velocity, since we can only measure the projected separation in R.A. and decl. In fact, the presence of the binary BC would lower the effective escape velocity further beyond this upper limit, since the planet would not need sufficient velocity on its own to

reach infinity, but only enough velocity to reach the gravitational sphere of influence of BC to eventually escape. Separation is computed using the minimum value over the range of epochs of the astrometry (2015 June 12 through 2017 April 20) from the linear fit, with the minimum value chosen so we continue to define the upper limit of the escape velocity.

In order to compare the projected velocity to the escape velocity limit, we use a Monte Carlo method to draw samples from both velocities given uncertainties in the astrometry, distance to the system, and mass of the star. For each Monte Carlo trial, for both R.A. and decl., we generate values of slope (projected velocity) and intercept (reference position) from the

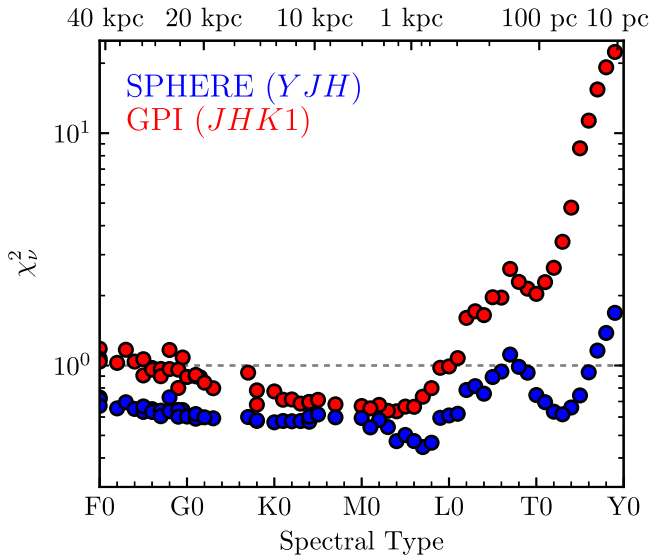


Figure 13. χ_ν^2 as a function of spectral type for the comparison between the spectral library and the SPHERE *YJH* spectrum (blue points) and the GPI *JHK1* spectrum (red points). Only field-gravity standards later than M0 are plotted for clarity. The SPHERE spectrum does not provide strong constraints on the spectral type earlier than $\sim T8$, while the GPI spectrum is only consistent with objects earlier than L0 ($\chi_\nu^2 < 1$). The photometric distance required to match the apparent *J*-band magnitude of HD 131399 Ab is shown on the top axis.

covariance matrix of the linear fit to the astrometry, as well as stellar mass and parallax from Gaussian distributions ($2.08 \pm 0.11 M_\odot$ and 10.20 ± 0.70 mas, respectively). Finally, we compute the ratio of projected velocity to escape velocity, which should be less than unity for a bound orbit. This method accounts for correlations in distance, since the same generated distance is used to calculate projected velocity and escape velocity, as well as between slope and intercept, since the same generated pair is used to compute the minimum separation for the escape velocity as well as the projected velocity.

In Figure 14 we plot the total projected displacement (total distance in both R.A. and decl.) between the first epoch and all subsequent epochs. The reference location is taken as the average of the IRDIS and IFS astrometry at 2015 June 12. We draw 100 values of the escape velocity from our Monte Carlo analysis and plot these as red lines, normalized to pass through the reference location. The astrometry clearly shows a steeper slope (a faster velocity) than the escape velocity. Computing the quotient of projected velocity and escape velocity (bottom panel of Figure 14) shows that the projected velocity is indeed always greater than the escape velocity, with the ratio having a value of 1.89 ± 0.23 , which reached a minimum value of 1.07 out of 10^7 trials. Thus the data are robustly inconsistent with the hypothesis that HD 131399 Ab is a bound planet.

The quantity v/v_{esc} is inversely proportional to the square root of stellar mass and directly proportional to $d^{1.5}$, with a factor of d coming from the projected velocity and another factor of \sqrt{d} from the escape velocity. The 2σ lower limit on this quantity is 1.56 (95.45% of the samples are larger than this number). In order to bring this 2σ limit to unity, it is therefore necessary to increase the mass of HD 131399 A by a factor of $1.56^2 = 2.43$ or decrease the distance by $1.56^{1/1.5} = 1.35$ (or else have a linear combination of these two changes). Such a change would represent a 27σ deviation in mass or a 5.1σ deviation in distance. Such a change in distance would likely

exclude HD 131399 A from the UCL association, and therefore the star and HD 131399 Ab would be much older, which ultimately affects the model-dependent mass estimate of the latter. Of these two, the most susceptible to error is mass, since the mass of the primary comes from an SED fit, and lower-mass stellar companions, too close to be resolved with GPI, could add additional mass that would raise the escape velocity. However, it is difficult to imagine there being $3 M_\odot$ of additional stars close to the $2.08 M_\odot$ HD 131399 A. The most likely high-mass companion would be an equal-mass binary, which even then is not enough to make the orbital velocity equal escape velocity at the 2σ level, and would be evident in the distance posterior from the SED fit.

This large upper limit on v/v_{esc} is not solely dependent on the astrometric calibration between SPHERE and GPI. When we repeat the same analysis for only the SPHERE astrometry presented here, five epochs from 2015 to 2017, we find this factor has a value of 1.88 ± 0.25 , with only four out of 10^7 trials less than unity. Using the original astrometry reported by W16, this factor becomes consistent with bound orbits, 1.02 ± 0.42 , with 48% of generated values below unity. In contrast, when we use our astrometry for these same four epochs from 2015 to 2016, we find a value of 1.80 ± 0.31 , with 0.09% of trials less than unity, consistent with our finding of a significantly larger slope in our reduction of the 2015–2016 SPHERE data compared to W16.

4.2. Exploring Orbital Phase Space

In the previous section, we have demonstrated that the projected velocity of HD 131399 Ab is significantly above the escape velocity. We proceed to explore the magnitude of the offset required in the astrometry, mass, and distance in order to fit a bound orbit to the data. We begin by assuming a fixed mass and distance of the star, $2.08 M_\odot$ and 98.0 pc. In order to investigate the orbital parameters required to fit the astrometry, we use the rejection sampling algorithm OFTI (De Rosa et al. 2015; Blunt et al. 2017; Rameau et al. 2016). Using OFTI, we generate 100 orbits drawn from the posterior probability distribution and plot them in Figure 15.

Unsurprisingly, since the projected motion is faster than the escape velocity, the best-fitting orbit is a poor fit to the data, with a systematically steeper slope in the data than the fit. With $\chi_\nu^2 = 6.7$, even the best-fitting orbit is clearly a bad fit to the data. This high projected velocity is only possible with very high orbital eccentricity, $e > 0.949$ for all generated orbits. This results in a high value of apastron, with 68% confidence between 1017 and 22433 au, and a minimum value of 597 au. The projected separation of the closest of the BC pair, HD 131399 B, with respect to HD 131399 A, is 309 au. Thus a large semimajor axis for BC around A ($\gtrsim 1000$ au) and a highly inclined orbit (≈ 70 – 110° , so that the projected separation is only ~ 300 au) would be required for these orbits to not cross each other.

When fitting orbits, it is more correct to incorporate errors on mass and distance by varying these parameters in the orbit fit and imposing priors as Gaussians given the measurements. We noted in Section 4.1 that the escape velocity problem can be ameliorated by increasing the mass of the star or decreasing the distance, so this standard orbit method will have the result of balancing, in a Bayesian sense, the χ^2 of the orbit fit, the mass, and parallax to find the most likely compromise between the three.

Table 6
Astrometry of HD 131399 Ab

UT Date	Instrument	Filter	ρ_{raw} (px)	θ_{raw} (deg)	Plate Scale (mas px ⁻¹) ^a	Position Angle Offset (deg)	ρ_{true} (mas)	θ_{true} (deg)
2015 Jun 12	SPH-IFS	<i>YJH</i>	112.9 ± 0.2	196.81 ± 0.16	7.46 ± 0.02 ^b	−1.75 ± 0.19 ^{b,c}	842.4 ± 2.9	195.06 ± 0.25
	SPH-IRDIS	<i>K1</i>	69.1 ± 0.3	196.94 ± 0.25	12.267 ± 0.021 ^b	−1.75 ± 0.14 ^{b,c}	848.1 ± 3.4	195.19 ± 0.29
	(SPH W16 ^d)	(...)	(...)	(...)	(12.23 ± 0.03)	(−1.56 ± 0.2)	(839 ± 4)	(194.2 ± 0.3)
2016 Mar 06	SPH-IFS	<i>YJH</i>	111.6 ± 0.2	196.68 ± 0.15	7.46 ± 0.02 ^b	−1.75 ± 0.19 ^{b,c}	832.1 ± 2.9	194.94 ± 0.24
	SPH-IRDIS	<i>K1</i>	67.5 ± 0.3	196.58 ± 0.27	12.267 ± 0.021 ^b	−1.75 ± 0.14 ^{b,c}	828.2 ± 4.1	194.83 ± 0.30
	(SPH W16 ^d)	(...)	(...)	(...)	(12.24 ± 0.03)	(−1.40 ± 0.2)	(834 ± 4)	(193.8 ± 0.3)
2016 Mar 17	SPH-IFS	<i>YJH</i>	110.5 ± 0.3	196.69 ± 0.16	7.46 ± 0.02 ^b	−1.75 ± 0.19 ^{b,c}	824.3 ± 3.2	194.94 ± 0.25
	SPH-IRDIS	<i>K1</i>	67.3 ± 0.3	196.79 ± 0.23	12.267 ± 0.021 ^b	−1.75 ± 0.14 ^{b,c}	825.3 ± 3.4	195.03 ± 0.27
	(SPH W16 ^d)	(...)	(...)	(...)	(12.24 ± 0.03)	(−1.40 ± 0.2)	(834 ± 4)	(193.8 ± 0.3)
2016 May 07	SPH-IFS	<i>YJH</i>	110.2 ± 0.3	196.11 ± 0.17	7.46 ± 0.02 ^b	−1.75 ± 0.19 ^{b,c}	822.4 ± 3.4	194.36 ± 0.25
	SPH-IRDIS	<i>K1</i>	67.2 ± 0.3	195.89 ± 0.15	12.267 ± 0.021 ^b	−1.75 ± 0.14 ^{b,c}	824.2 ± 3.4	194.14 ± 0.20
	(SPH W16 ^d)	(...)	(...)	(...)	(12.24 ± 0.03)	(−1.47 ± 0.2)	(830 ± 4)	(193.5 ± 0.3)
2017 Feb 15	GPI	<i>H</i>	56.7 ± 0.2	195.01 ± 0.17	14.166 ± 0.007	−1.10 ± 0.13	802.9 ± 2.4	193.92 ± 0.21
2017 Feb 16	GPI	<i>J</i>	56.8 ± 0.2	194.93 ± 0.16	14.166 ± 0.007	−1.10 ± 0.13	804.6 ± 2.4	193.83 ± 0.21
2017 Mar 15	SPH-IRDIS	<i>J</i>	65.4 ± 0.2	195.43 ± 0.16	12.263 ± 0.021 ^b	−1.75 ± 0.14 ^{b,c}	801.8 ± 2.5	193.68 ± 0.21
2017 Apr 20	GPI	<i>H</i>	56.4 ± 0.1	194.68 ± 0.13	14.166 ± 0.007	−1.10 ± 0.13	799.0 ± 1.8	193.58 ± 0.18

Notes.^a In reduced GPI/SPHERE IFS data cubes, one pixel is equivalent to one lenslet.^b Maire et al. (2016) and ESO SPHERE user manual 7th edition.^c Since the pupil offset (135.99 ± 0.11 deg) and the IFS offset (−100.48 ± 0.13 deg) are corrected by our pipeline, the position angle offset corresponds to the calibration of a reduced image with respect to true north (−1.75 ± 0.08 deg). The uncertainty on the position angle offset is the quadratic sum of all three angles for the IFS data, and of the pupil offset and true north correction for the IRDIS data.^d Wagner et al. (2016) reports the astrometry without specifying the instrument and one point for the two epochs in 2016 March.

Table 7
SPHERE Astrometry of HD 131399 B

Epoch	Parameter	W16	This work
2015 Jun 12	ρ (mas)	3149 ± 6	3153 ± 6
	θ (deg)	221.9 ± 0.3	222.2 ± 0.2
2016 Mar 06	ρ (mas)	3150 ± 6 ^a	3151 ± 6
	θ (deg)	221.5 ± 0.3 ^a	221.9 ± 0.2
2016 Mar 17	ρ (mas)	...	3152 ± 6
	θ (deg)	...	222.3 ± 0.2
2016 May 07	ρ (mas)	3149 ± 6	3154 ± 6
	θ (deg)	221.8 ± 0.3	222.2 ± 0.2

Note.^a **W16** report one point for the two epochs in March 2016.

To investigate the effect of allowing the distance and mass of the star to vary within the orbit fit, we use the `emcee` parallel-tempered affine-invariant MCMC sampler to estimate the orbital elements from the astrometry presented in Table 6. We fit eight parameters: semimajor axis a , inclination i , eccentricity e , position angle of nodes and argument of periastron as $\Omega + \omega$ and $\Omega - \omega$, epoch of periastron T_0 , parallax π , and M (total mass, the mass of Ab being negligible if bound). Here we define T_0 in units of orbital period from the first epoch of the astrometric record (2015.44). We adopt uniform priors in $\log_{10} a$, $\cos i$ (−1 to 1), e (<1), $\Omega + \omega$ and $\Omega - \omega$ (0–2 π), and T_0 (0–1). The prior on π was created by multiplying a Gaussian distribution centered at 10.20 mas with a 1σ width of 0.70 mas, corresponding to the *Hipparcos* parallax of HD 131399 A, with a π^{-4} power-law distribution. The prior on the mass, M , was a Gaussian distribution centered at $2.08 M_{\odot}$ with a 1σ width of $0.11 M_{\odot}$ (Table 3). We initialized 512 walkers at each of 32

temperatures. Each walker was advanced for 10^6 steps, with the first half of each chain discarded as a “burn in” as they converged to their final value.

Allowing the distance and mass to float significantly improved the quality of the fit, reducing the minimum χ^2_{ν} from 6.7 (Figure 15) to 0.92 (Figure 16). This improvement was achieved by the MCMC chains moving to a significantly smaller distance to HD 131399 A (~ 73 pc) and a slightly larger total mass ($\sim 2.25 M_{\odot}$). This decreased the measured velocity of HD 131399 Ab and increased the escape velocity of the system so that bound orbits could be fit. The posterior distribution of the parallax ($\pi = 13.79 \pm 0.46$ mas) is 4.3σ discrepant from the prior distribution (Figure 16) and corresponds to a distance of 72.5 ± 2.4 pc, consistent with the distance required in the escape velocity analysis in Section 4.1. This distance is significantly discrepant from the *Hipparcos* measurement of 98.0 ± 6.9 pc, the distance obtained from the SED fit of the three stars in the HD 131399 system of 107.9 ± 4.0 pc (Section 3.1), and also the mean distance of UCL members of 140 pc (de Zeeuw et al. 1999). The posterior distribution of the mass ($M = 2.27 \pm 0.10 M_{\odot}$) is shifted by 1.3σ relative to the prior distribution ($M = 2.08 \pm 0.11 M_{\odot}$). As with the fit using OFTI with a fixed mass and distance, the posterior distribution of e is strongly peaked at very high eccentricities. We find a median and 1σ range of $e = 0.980^{+0.010}_{-0.017}$, and the lowest eccentricity within any of the MCMC chains was $e = 0.82$.

4.3. Standard Test of Background Motion Assuming an Infinitely Distant Background Object

Most stars targeted by direct imaging are relatively nearby ($\lesssim 100$ pc), so they typically have well-measured parallaxes and proper motions (errors $\lesssim 1$ mas). Thus the motion of the

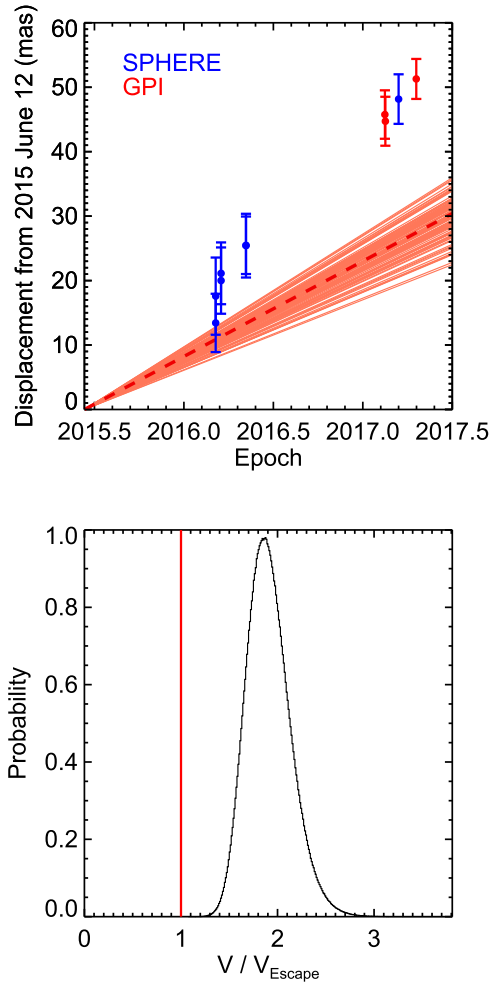


Figure 14. Top: offset of HD 131399 Ab over time from the first epoch, 2015 June 12, as measured with VLT/SPHERE (blue) and Gemini/GPI (red). Red lines represent Monte Carlo draws of the escape velocity, with the dashed line showing the median escape velocity. Later epochs, especially those in 2017, show the motion of HD 131399 Ab to be significantly above escape velocity. The posterior probability distribution of the projected velocity of HD 131399 Ab divided by the escape velocity (bottom) illustrates that the system is not consistent with a bound orbit ($v/v_{\text{esc}} = 1.89 \pm 0.23$).

target star across the sky is well determined over time. The analysis then proceeds by comparing the relative astrometry between candidate and target star over multiple epochs and determining whether it follows the background track (which, relative to the target star, moves in the opposite direction of the parallax and proper motion of the star), or is more consistent with common proper motion (e.g. Nielsen et al. 2013).

An added complication is that candidates closer to the star may show significant orbital motion over the time frame of the astrometric observations, as detailed in the case of the planets HR 8799 bcd (Marois et al. 2008), β Pic b (Lagrange et al. 2010), and 51 Eri b (De Rosa et al. 2015). A determination of the status of the candidate can be made when it is shown to follow the background track at a projected velocity (assuming the distance of the target star) inconsistent with a bound orbit, or it does not follow the background track and has motion consistent with a bound orbit.

Figure 17 presents this analysis for HD 131399 Ab and demonstrates that neither the infinitely far background object

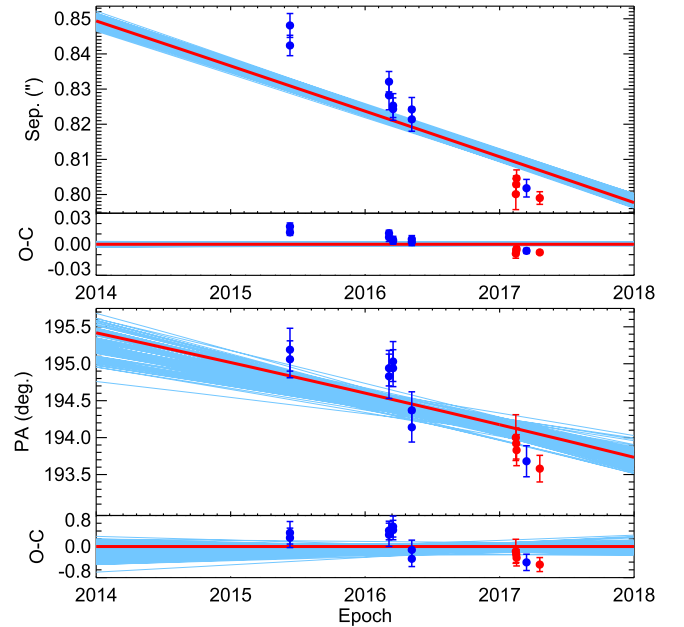


Figure 15. Orbital fit to HD 131399 Ab when fixing the distance of the system to 98 pc and mass to $2.08 M_{\odot}$. As expected given our analysis of the escape velocity, no bound orbit has enough projected velocity to fit the data. The plotted orbits are all highly eccentric, $e > 0.95$, with minimum apastron of 597 au, which is about twice the projected separation between HD 131399 A and HD 131399 B, so even this poorly fitting orbit ($\chi^2_{\nu} = 6.7$) is very unlikely given the system architecture.

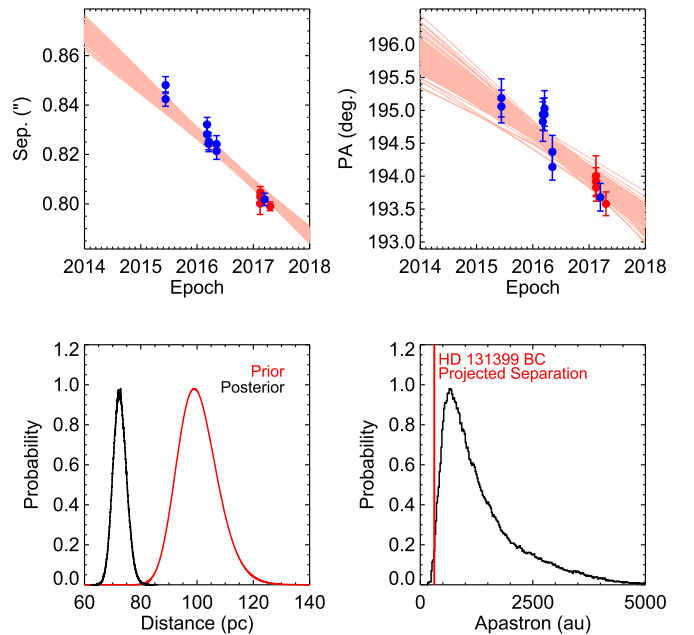


Figure 16. Modified orbital fit to HD 131399 Ab where distance and mass are allowed to vary, with Gaussian priors set by the measurements: $\pi = 10.2 \pm 0.7$ mas and $M = 2.08 \pm 0.11 M_{\odot}$. In order to generate orbital motion fast enough to fit the data, the MCMC had to move the system distance from ~ 98 pc to ~ 73 pc, which is more than 4σ from the *Hipparcos* measurement and inconsistent with our SED fitting. Even with this smaller distance, the bottom right panel shows that the resulting orbits are highly eccentric, with apastron distance greater than the projected separation between HD 131399 A and HD 131399 BC for 99% of orbits.

scenario nor the orbiting planet scenario is fully consistent with all the astrometric data. The background track is tied to the GPI 2017 February 15 *H*-band point and assumes the *Hipparcos*

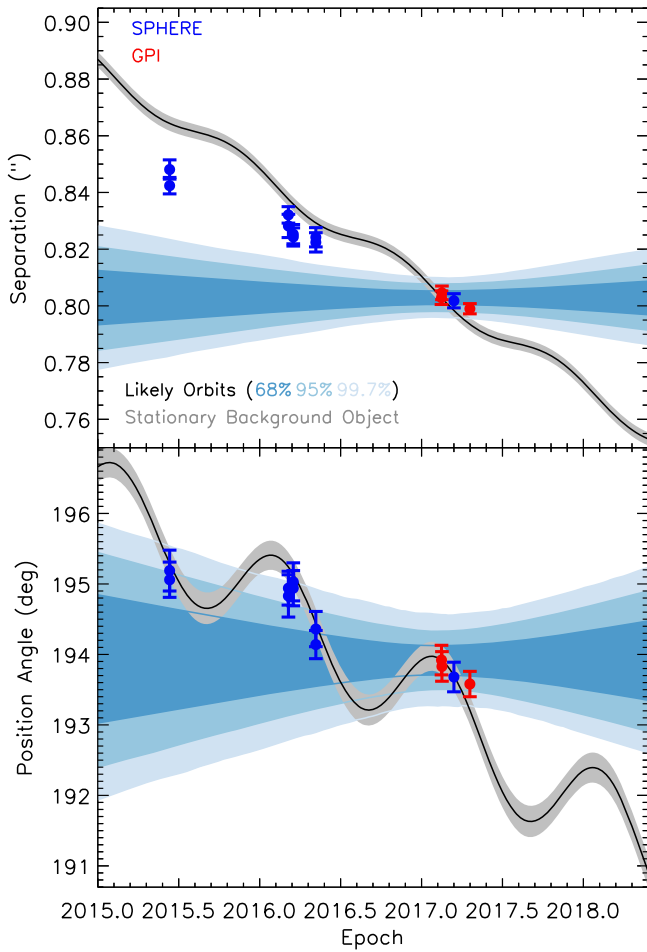


Figure 17. Expected motion of the candidate companion to HD 131399 Ab relative to HD 131399 A, as measured by VLT/SPHERE (blue) and Gemini/GPI (red). An infinitely distant background object with zero proper motion would be following the gray track, while an orbiting planet would lie within the blue cone. Neither explanation is a good match to the data.

proper motion for HD 131399 A of $(-26.69 \pm 0.59, -31.52 \pm 0.55)$ mas yr $^{-1}$ and parallax of 10.2 ± 0.7 mas (van Leeuwen 2007). The width of the gray track corresponds to the 68% confidence interval, based on a Monte Carlo error analysis that combines the errors on the reference epoch astrometry and the star’s proper motion and parallax (Nielsen et al. 2013). The orbital motion cones are calculated using the same 2017 February 15 GPI astrometry, using the Monte Carlo method described in De Rosa et al. (2015). Orbital parameters are drawn from prior distributions: uniform priors in ω and T_0 , i following a $\sin i$ distribution, and e following a linear fit to RV planets (Nielsen & Close 2010). Here, a and Ω are chosen to place the reference astrometry on the orbit at the reference epoch, to within a two-dimensional Gaussian centered on the measured astrometry and with standard deviation equal to the measurement errors.

The astrometry falls neither on the background track nor within the orbit cone. The 2015 June 12 SPHERE data, in particular, are clearly between the separation values predicted for a zero-proper-motion background object and an orbiting planet. We have demonstrated above that orbital motion cannot explain this offset, so we instead reexamine the assumption that a background object has no proper motion or parallax of its own.

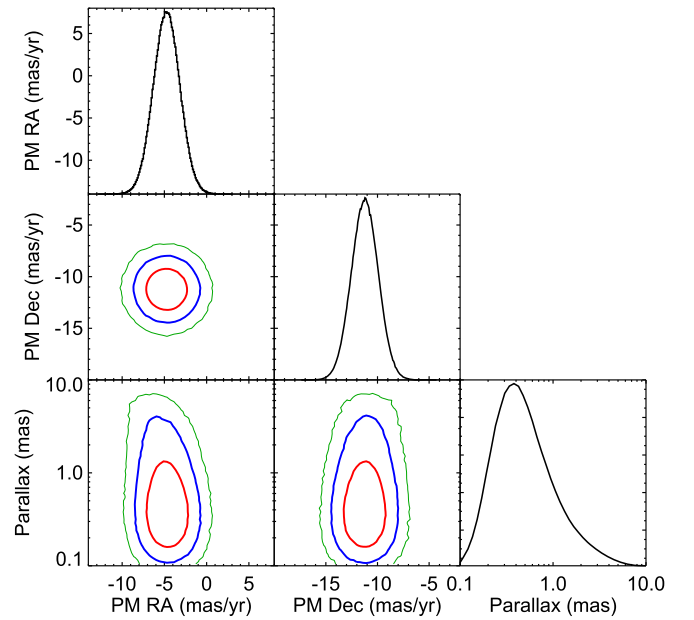


Figure 18. Posterior probability distributions and covariances for the proper motion and parallax of HD 131399 Ab, given the relative astrometry of the candidate and the literature measurement of the parallax and proper motion of HD 131399 A. Red, blue, and green contours correspond to 68%, 95%, and 99.7% confidence intervals. No appreciable parallax motion of the candidate is seen given our astrometric errors (the shape of the parallax posterior is largely set by our prior), while a significant motion in the decl. direction is observed.

4.4. A Finite-distance Background Object with Nonzero Proper Motion

As noted above, the standard assumption when testing for common proper motion is that the background object is at infinite distance with zero proper motion. In reality, the typical distances to background stars are $\sim 1\text{--}10$ kpc, with proper motions less than a few mas per year. We investigate this possibility using the MCMC method described in Macintosh et al. (2014) and De Rosa et al. (2015) to find the proper motion and parallax a background object would need to match the relative astrometry of a candidate companion. In these previous works, we assumed no errors on the astrometry at the reference epoch and no errors on the proper motion and parallax of the primary. Here we update this method by incorporating these errors and fitting an eight-dimensional function: proper motion (in R.A. and decl.) and parallax of the candidate, proper motion and parallax of the primary, and separation and PA of the candidate with respect to the primary star at a reference epoch (chosen to be 2017.0 so as to be in the middle of our astrometric record). Priors are taken to be uniform in proper motion in R.A. and decl. of the candidate. We adopt the distance prior described by Bailer-Jones (2015), which combines a uniform space density prior with an exponential drop-off in stellar density, $p(d) \propto d^2 e^{-d/L}$, where d is distance and L is a reference length scale, which is set to 1000 pc. Changing variables from distance to parallax ($\pi = 1/d$) introduces an additional factor of $1/\pi^2$, giving us our parallax prior of $p(\pi) \propto \pi^{-4} e^{-1/(\pi L)}$, which is truncated at 10 kpc. For the primary, Gaussian priors are used for the proper motion and parallax corresponding to the van Leeuwen (2007) *Hipparcos* measurements and errors. Uniform priors are assumed for the separation and position angle at the reference epoch.

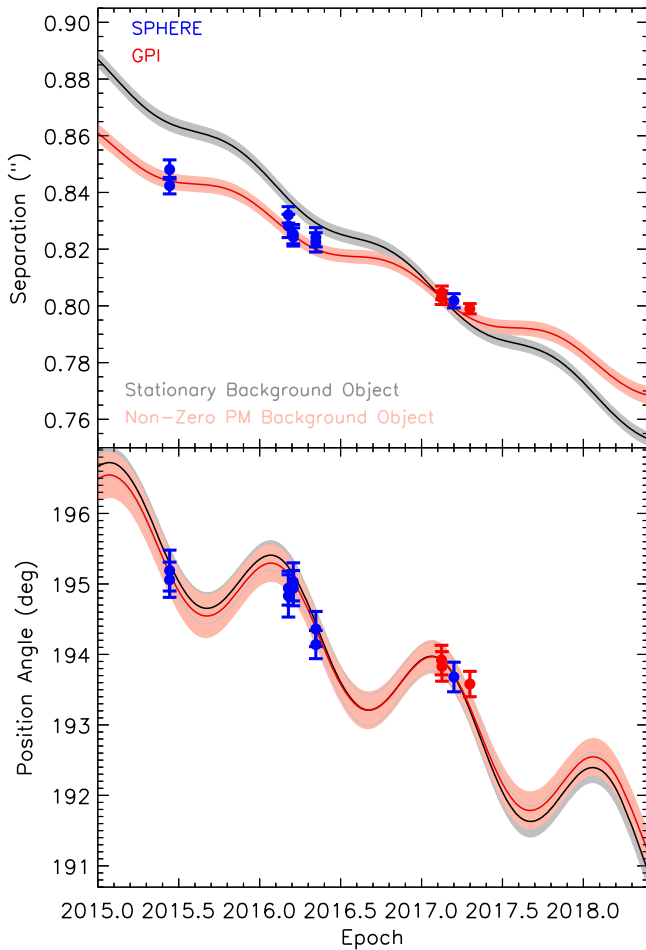


Figure 19. Modified background track using our fit to the proper motion and parallax of HD 131399 Ab. The original background track (for an infinitely distant background object with zero proper motion) is shown in gray, and the modified track in red. The track gives a prediction for relative motion of HD 131399 Ab over the rest of the 2017 observing season, accelerating in PA while slowing down in separation compared to the predictions of a linear fit to the data.

In Figure 18 we present the posteriors on parallax and proper motion of HD 131399 Ab, assuming it is not bound to HD 131399 A. While proper motion in the R.A. direction and parallax are both close to 0 ($\mu_\alpha = -4.7 \pm 1.6$ mas yr⁻¹, $\pi < [0.64, 2.01]$ mas at [68%, 95%] confidence), decl. proper motion is significantly larger ($\mu_\delta = -11.2 \pm 1.3$ mas yr⁻¹). This motion in decl. is the departure from the background track seen in Figure 17 and the orbital motion examined by W16 and discussed in Section 4.2. We display the fit proper motions along with the data in Figure 19, where the new proper motion track is the difference between the *Hipparcos* values of proper motion and parallax of HD 131399 A and our fit values for the proper motion and parallax of HD 131399 Ab. Errors from the *Hipparcos* measurement and uncertainties in our fit are added in quadrature. While ~ 12 mas yr⁻¹ is a relatively large proper motion, about one-quarter the total proper motion of HD 131399 A, is this motion plausible for a star at ~ 1 kpc?

To answer this question, we use the Besançon model of stellar populations (Robin et al. 2003), retrieving a set of simulated stars from the web form at <http://model.obs-besancon.fr>. We selected stars in the direction of HD 131399 A, with magnitudes of

$19.63 < H < 19.87$ to match the 2σ range of apparent magnitudes of HD 131399 Ab, with distances from 0 to 50 kpc, and with a large solid angle of one square degree to give us a large statistical sample (6197 stars were generated). We plot a subset of 1000 stars, along with the constraints on the proper motion and parallax of HD 131399 Ab from the relative astrometry, in Figure 20. Since our parallax posterior is largely set by our choice of prior, and our data cannot distinguish between parallaxes $\lesssim 5$ mas, we extend the contours from 0.1 mas to zero. While the proper motion and parallax constraints do not encompass the majority of the simulated background stars, there is a significant subset that fall within the contours: 0.16% fall within the 1σ contours, 0.89% inside 2σ , and 1.9% within 3σ . We note that these values do not represent the probability that HD 131399 Ab is a background object, but are instead proportional to our constraints on proper motion and parallax. Even if our constraints were in the middle of the cloud of background objects in Figure 20, as better astrometry allowed us to reduce the size of the contours, fewer and fewer simulated background stars would fall inside. Rather, this is a demonstration that the proper motion required to explain the change in relative astrometry seen in Figure 17 is plausible for background stars in the direction of HD 131399 A with the same apparent magnitude as HD 131399 Ab.

The Besançon points are consistent not just with the amplitude of the proper motion, but also with the direction we measure for HD 131399 Ab. These points, in the left panel of Figure 20, are not distributed isotropically, but instead preferentially represent stars moving south and west. If we were simply to reverse the direction of HD 131399 Ab, multiplying the measurements of proper motion in R.A. and decl. by -1 , the fraction of Besançon stars falling into the $[1, 2, 3]$ σ contours drops to [0%, 0%, 0.048%]. While there is no preferred direction for an orbiting planet, there is clearly a preferred direction for the proper motion of background stars at these coordinates, and HD 131399 Ab is moving in that direction.

We note the constraints at smaller distances ($\lesssim 1$ kpc) are largely driven by our choice of the prior on parallax, but do not strongly affect the overall conclusions. Constraints on proper motion in R.A. and decl. are largely unchanged by the choice of prior. Changing from a $p(d) \propto d^2 e^{-d/L}$ prior to a simple $p(d) \propto d^2$ cutoff at 10 kpc results in the fraction of Besançon stars falling into $[1, 2, 3]$ σ contours dropping from [0.16%, 0.89%, 1.9%] to [0.03%, 0.29%, 1.3%], entirely due to lower values of parallax becoming less probable. Switching to a uniform prior in parallax results in again smaller percentages falling into the contours compared to the exponentially declining prior, [0%, 0.4%, 1.5%], as now more large-parallax points are accepted while more small-parallax points are rejected. Of these three priors, both the uniform and d^2 prior are poor fits to the Besançon points, while the exponentially declining prior is an excellent fit between 1 and 10 kpc. Since our measurement on parallax is essentially an upper limit, we adopt the values from the more realistic, exponentially declining prior in our analysis, but with the small parallax constraints extended from 0.1 mas to 0 mas.

4.5. Possible Scenarios

We are presented with two unlikely scenarios for the nature of HD 131399 Ab: a planet with extreme orbital parameters (most likely currently being ejected from the system), or a background object with an unusually high proper motion. An

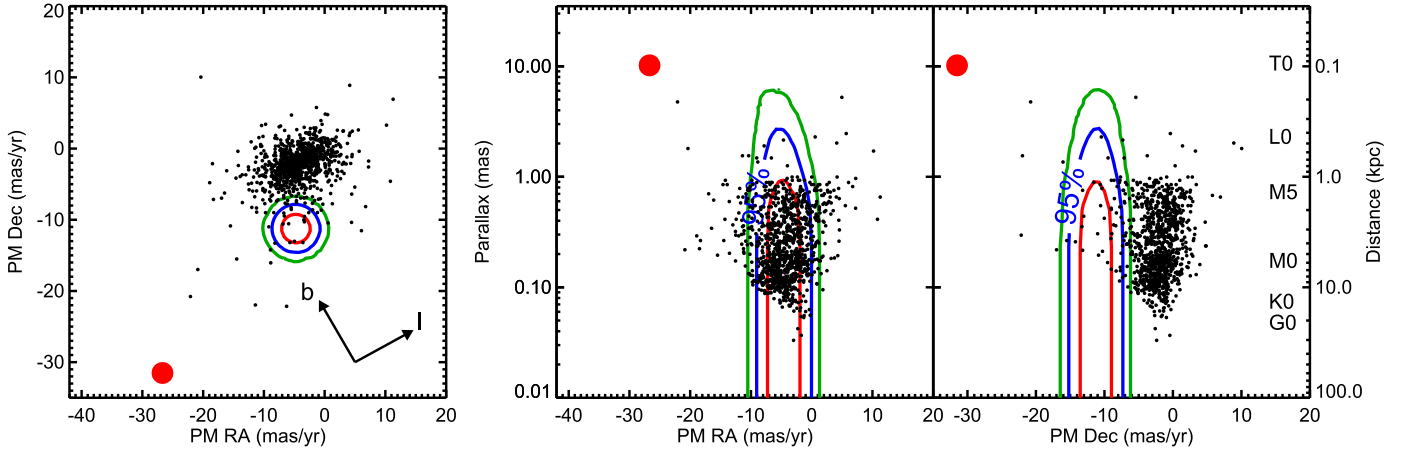


Figure 20. Constraints on proper motion and parallax of HD 131399 Ab along with 1000 simulated background stars generated by the Besançon Galaxy Model. The red point marks the proper motion and parallax of the star HD 131399 A. While the bulk of the Besançon points lie outside our constraints, there are background objects that fall within our contours (0.16%, 0.89%, and 1.9% of points lie within the 1, 2, and 3σ contours, respectively). Thus a ~ 1 –10 kpc background object is a plausible explanation for the relative velocity observed between HD 131399 A and HD 131399 Ab.

order-of-magnitude estimate for the likelihood of observing a planet being ejected just as it is detected is the orbital period divided by the system lifetime, which for a circular orbit with semimajor axis equal to the projected separation of 82 au, is $520 \text{ yr} / 16 \text{ Myr}$, or 9×10^{-6} . So while a background object whose proper motion is only consistent with $\sim 1\%$ of Besançon simulated objects (at 95% confidence) is unlikely, the ejected planet hypothesis is several orders of magnitude more unlikely.

4.5.1. Bound Planet or Background Star?

To apply a more rigorous analysis, we construct an odds ratio between the likelihood of the planet and background object scenario. In particular, we consider three elements for each hypothesis: the overall likelihood of each object, the relative likelihood as a function of separation from the star, and relative probability as a function of projected velocity:

$$\frac{P_{\text{BG}}}{P_{\text{Pl}}} = \frac{P(\text{BG})P(\rho|\text{BG})P(v|\rho_{\text{BG}})}{P(\text{Pl})P(\rho|\text{Pl})P(v|\rho_{\text{Pl}})}, \quad (1)$$

where P is probability, BG and Pl are background and planet, ρ is projected separation, and v is projected velocity.

For the first term, we restrict the separation range to $0''.1$ to $1''$ (≈ 10 –100 au) and apparent magnitude $19.63 < H < 19.87$. For background objects, this is the total number of Besançon objects generated in Section 4.4, 6197 stars, multiplied by the ratio of solid angles: $6197 \times (\pi(1'')^2 - \pi(0''.1)^2) / ((3600'')^2) = 0.15\%$. For planets, an apparent magnitude constraint of $19.63 < H < 19.87$, at 16 Myr, corresponds to a mass range of 3.64 – $4.01 M_{\text{Jup}}$, using the COND models (Baraffe et al. 2003). Early analysis of the Gemini Planet Imager Exoplanet Survey puts planet yield at $\sim 6\%$ of $2 M_{\odot}$ hosting a planet between 10 and 100 au, with mass between 5 and $13 M_{\text{Jup}}$ (E. Nielsen et al. 2018, in preparation). We convert this probability to our mass range, 3.64 – $4.01 M_{\text{Jup}}$, assuming planets follow the power-law distribution in mass of Cumming et al. (2008), $dN/dM \propto M^{-1.31}$, or 0.76% of stars having such a planet.

Next, we consider the second term, the fraction of background stars and planets at the observed projected separation, taken here to be the 2σ range measured at the discovery epoch with the

SPHERE IFS, 836.6–848.2 mas. Over small areas on the sky ($\lesssim 10''$), background objects are uniformly distributed, so the probability of lying at this separation is just the ratio of areas between an annulus from 836.6 to 848.2 mas and one from 100 to 1000 mas, or 1.97%. For planets, the semimajor axis distribution (converted from the Cumming et al. 2008 distribution for period for solar-mass stars) is $dN/da \propto a^{-0.61}$. So the second term for planets is then 0.85%. Adopting a uniform log semimajor axis distribution ($dN/da \propto a^{-1}$) instead would have a minor effect, changing this term from 0.85% to 0.60%.

Finally, we consider the projected velocity measured between 2015 and 2017. As described in Section 4.4, 0.89% of Besançon objects have a proper motion consistent with our 2σ contours, so we use this as the value for $P(v|\rho_{\text{BG}})$. The corresponding term for planets, $P(v|\rho_{\text{Pl}})$, is then the fraction of orbits whose projected velocity is within the 2σ range of the measured projected velocity from the relative astrometry. Using OFTI (Blunt et al. 2017), we generate 10^7 orbits from the first SPHERE IFS astrometric measurement, incorporating errors in separation, position angle, stellar mass, and distance. The maximum projected velocity expected from an orbiting body is then 19.7 mas yr^{-1} . In Section 4.1 we generated 10^7 measurements of the projected velocity from the full astrometric record of HD 131399 Ab, finding 2σ confidence intervals in the ranges 15.3 – 21.5 mas yr^{-1} in R.A. and 18.5 – 22.6 mas yr^{-1} in decl. As expected, since we found this projected velocity to be above escape velocity, none of the 10^7 generated orbits has a projected velocity in this 2σ range, so we can only set an upper limit on $P(v|\rho_{\text{Pl}})$ of 10^{-7} , or $10^{-5}\%$.

Entering these values into Equation (1), we find

$$\frac{P_{\text{BG}}}{P_{\text{Pl}}} > \frac{0.15\% \times 1.97\% \times 0.94\%}{0.76\% \times 0.85\% \times 10^{-5}\%} = 43,000, \quad (2)$$

so the probability that HD 131399 Ab is a background object is 43,000 times greater than the probability that it is a bound planet. While this analysis depends on multiple assumptions, including the poorly known distribution of giant planets at wide separations, the dominant term in Equation (2) is the velocity term. If we were to consider the stability of these orbits, the

likelihood of being a bound planet would drop further, since the best-fitting orbits are likely to cross the orbit of HD 131399 BC. But stability calculations (e.g., Holman & Wiegert 1999) show that the semimajor axis of the planet must actually be at least a factor of two smaller than that of HD 131399 BC, so even noncrossing orbits are not sufficient. As we would expect from our analysis of the escape velocity, the large projected velocity of HD 131399 Ab strongly precludes the possibility that it is a bound planet.

4.5.2. Ejected Planet?

An unlikely scenario is that HD 131399 Ab is indeed a planetary-mass object that formed around HD 131399 A, but is currently in the process of being ejected from the system, thus explaining why it is traveling faster than escape velocity. We note this is very unlikely *a priori*, since the chance of observing a 16 Myr star just as it is ejecting its planet is very low (Veras et al. 2009). As noted earlier, our estimate for this probability, the ratio between the orbital period at the projected separation and the system lifetime, is 9×10^{-6} .

Planets ejected during planet–planet scattering are expected to attain a positive energy by a series of small kicks, and hence when they attain a positive energy they are traveling only slightly faster than the local escape velocity (Malhotra 2002). If the observations are interpreted as an escaping planet with an observed speed twice the local escape velocity, the scattering must have happened much closer to the star, and hence the current motion should be radial from star A, which contradicts the observations, since the separation of Ab and A is decreasing over time.

4.5.3. Alternative Explanations

For the astrometric data set to be consistent with a bound orbit, one of three measurements has to change significantly: our astrometry and errors, the total mass of HD 131399 Ab, or the distance to the system.

Our SED fitting of HD 131399 A makes it difficult to significantly change either the system mass or the distance. For the projected velocity to drop below escape velocity, either the distance to the system needs to decrease or the mass needs to increase. But adding more mass would increase the flux in the SED fit, which would result in a larger distance for the same spectral type. Similarly, decreasing the distance would require a later spectral type to explain the same flux, which would decrease the mass.

In order to avoid disrupting the SED fit, the extra mass in the system would have to come in the form of low-mass companions with significant mass but negligible flux. One such configuration would be multiple low-mass companions to HD 131399 A. Given typical magnitudes as a function of spectral type for dwarfs (Pecaut & Mamajek 2013), doubling the mass while not raising the V-band flux by more than 10% would require two G1V companions to the A1V HD 131399 A. Such companions would be visible in the GPI *H* images at projected separations greater than 50 mas (5 au), requiring an unlikely configuration of a very compact triple system in addition to the wide companions B and C. Such configurations could be detectable with future RV monitoring of the system.

An even more unlikely explanation is degenerate companions to HD 131399 A. Given the system age of 16 Myr, a

white dwarf companion can be excluded since the time required for a $\lesssim 10 M_{\odot}$ star to evolve into a white dwarf has not elapsed (Maeder 2009). Even if a high-mass star formed a white dwarf within 16 Myr, we would be observing the white dwarf at its peak luminosity, and it would be evident in the observed SED. The system age is plausible for a higher-mass companion to go supernova and form a black hole or neutron star. Such high-mass stars ($\gtrsim 10 M_{\odot}$) are intrinsically rare, where the progenitor would be one of the highest-mass stars to form in the UCL association, and the rapid change in mass from a supernova in a binary system would likely disrupt the HD 131399 ABC system.

Systematic errors in the astrometry could be responsible for the projected velocity of HD 131399 Ab exceeding escape velocity. We find this possibility unlikely as well, since previous analysis of GPI astrometry has shown excellent precision over time (< 1 mas for β Pic b, Wang et al. 2016) and with respect to VLT/SPHERE and Keck/NIRC2. The fact that the 2017 SPHERE epoch lies between the 2017 February and 2017 April GPI epochs illustrates that both instruments have well-calibrated astrometry. A level of astrometric systematics larger than seen in any previous study would be required to explain the movement observed for this system.

A final possible explanation would be a significant error in the *Hipparcos* proper motion. Figure 20 shows that the proper motion of HD 131399 Ab in the R.A. direction is well matched to the mean Besançon points in the R.A. direction, but at the edge of the distribution in the decl. direction. A smaller decl. proper motion for the star HD 131399 A (by a few mas/yr) would account for this offset. The Tycho-2 catalog (Høg et al. 2000) gives a proper motion of $[-29.7 \pm 1.2, -26.2 \pm 1.3]$ mas yr $^{-1}$, compared to the *Hipparcos* (van Leeuwen 2007) values of $[-29.69 \pm 0.59, -31.52 \pm 0.55]$; the two measurements are consistent in the R.A. direction, but are $\sim 3\sigma$ discrepant in the decl. direction. The smaller Tycho-2 proper motion would translate to HD 131399 Ab needing a smaller total proper motion to explain the astrometry. HD 131399 BC, $\sim 3''$ south of the star at $\sim 220^\circ$, could plausibly have biased the proper motion in the decl. direction, though this effect is expected to be small, given the large magnitude difference ($\Delta H_p = 4.52$) between A and BC. Both sets of measurements are in general agreement with ground-based astrometry, with a proper motion given by Bastian & Röser (1993) of $[-34.7 \pm 3.4, -29.0 \pm 3.1]$, and by Platais et al. (1998) of $[-30.6 \pm 2.9, -29.6 \pm 3.4]$ mas yr $^{-1}$. HD 131399 A is not in the *GAIA* first data release (Lindgren et al. 2016), likely because it is a close binary, but the final *GAIA* astrometry should provide a useful check on the proper motion of this system.

5. Conclusions

We present new astrometric and spectroscopic measurements of HD 131399 Ab obtained with Gemini/GPI in the *JHK*1 bands, with VLT/SPHERE in the *J* band, and with Keck/NIRC2 in *L'* combined with a reanalysis of the VLT/SPHERE data sets in the *JHK*1K2 bands published by W16. Our results, derived from two independent PSF subtraction and analysis pipelines used to mitigate biases from the data reduction and analysis process, lead us to revise the status of the object. The data are inconsistent with the hypothesis that HD 131399 Ab is

a bound T-type planet (W16) and instead are more consistent with it being a background star.

Using spectrophotometry, we revise the SED of HD 131399 Ab with these higher quality data and broader wavelength coverage. Empirical comparisons show that its near-IR colors and spectra preclude HD 131399 Ab from having a spectral type later than early L, and we exclude the presence of strong methane absorption. The *H*-band spectra obtained from the SPHERE data, though noisy, present a peaky continuum characteristic of a young LT object in only one of the four data sets. The other three data sets are featureless with no sign of methane or water absorption. We show that the peak may be caused by a speckle close to the source, which biases the extracted flux between 1.62 and 1.64 μm . Moreover, our revised SPHERE *K1K2* magnitudes are inconsistent with the published ones (W16), while the sets of photometry are consistent for the binary B and exclude the presence of methane. Altogether, the new GPI spectra and magnitudes of HD 131399 Ab and the revised SPHERE ones are mostly consistent with a K or an M dwarf, the most probable candidates for a background object at an apparent *H*-band magnitude around 20.

In addition, our revised astrometry for the SPHERE data sets has a systematic offset of one degree on the position angles with respect to the values presented in W16, which was an offset not present in the position angles of HD 131399 B. The astrometry also reveals a significant change to the separation at each epoch. This reanalysis is further evidence against the planet hypothesis, with only a 0.092% likelihood that HD 131399 Ab is moving slower than escape velocity using only the pre-2017 data. When we include the new GPI and SPHERE astrometry from 2017 in this analysis, which we have previously shown to be self-consistent and consistent between the two instruments, this confidence increases to better than one part in 10^7 . In order to construct bound orbits, it is necessary to reduce the system distance from 98 pc to 73 pc, or increase the mass of HD 131399 A by more than a factor of two, both implausible scenarios. Even when these changes are made, though, the resulting orbit is highly eccentric, with the likely values for apastron greatly exceeding the projected separation of HD 131399 BC. Therefore all these changes represent unstable orbits. We conclude, then, that orbital motion is an inadequate explanation for the change in relative astrometry observed in this system. This motion is, however, consistent with a background star in this part of the sky, in both magnitude and direction, even if the proper motion required is in the top 4% for these background objects.

Finally, we note that HD 131399 Ab is a particularly pathological background object: W16 followed all the standard steps in their analysis, but a combination of multiple unlikely factors led to the conclusion that HD 131399 Ab was a planet. A speckle in the third SPHERE data set, combined with the SPHERE *YJH* spectral coverage ending at $\sim 1.64 \mu\text{m}$, mimicked a T-like spectrum in the *H* band. The apparent magnitude of the background star was consistent with a planet of the inferred spectral type and age of the system. This background object has a proper motion (in mas yr^{-1}) larger than 96% of background objects at this magnitude range in this region of the sky, and the target star's proper motion is relatively small, only four times larger than that of the

background object. This resulted in a significant deviation from the stationary background object track, and was within a factor of two of a velocity consistent with orbital motion. Further, the background object was one-third of the way between HD 131399 Ab and HD 131399 BC, at the outer limit of predictions for stable orbits of planets in multiple systems. In short, this background object was almost tailor-made to pass the standard tests performed in the analysis of direct imaging data.

As direct imaging technology and techniques mature, it becomes more important to consider the assumptions of the standard stationary background object test when testing for common proper motion. As contrasts improve at smaller angular separations, planet candidates are being detected around stars at larger distances from the Sun and therefore with smaller proper motions. At the same time, astrometric accuracy is improving, even exceeding 1 mas for the brightest objects (Wang et al. 2016). With these trends, it is increasingly likely that the few mas/yr expected motion of background objects will become significant when differentiating between common proper motion companions and background stars, as is the case for HD 131399 Ab. In addition, planet candidates detected closer to the target star will have a larger range of predicted orbital motions. As a result, special care should be taken when evaluating the background object scenario, in addition to spectral typing, to ensure that a sufficiently long astrometric record has been collected to definitively identify candidates as having common proper motion or being unassociated background objects.

This work is based on observations obtained at the Gemini Observatory, which is operated by the Association of Universities for Research in Astronomy, Inc., under a cooperative agreement with the NSF on behalf of the Gemini partnership: the National Science Foundation (United States), the National Research Council (Canada), CONICYT (Chile), Ministerio de Ciencia, Tecnología e Innovación Productiva (Argentina), and Ministério da Ciência, Tecnologia e Inovação (Brazil). Some of the data presented herein were obtained at the W.M. Keck Observatory, which is operated as a scientific partnership among the California Institute of Technology, the University of California, and the National Aeronautics and Space Administration. The Observatory was made possible by the generous financial support of the W.M. Keck Foundation. The authors wish to recognize and acknowledge the very significant cultural role and reverence that the summit of Maunakea has always had within the indigenous Hawaiian community. We are most fortunate to have the opportunity to conduct observations from this mountain. This work is based on observations collected at the European Organization for Astronomical Research in the Southern Hemisphere under ESO program 098.C-0864(A) and based on data obtained from the ESO Science Archive Facility. SPHERE is an instrument designed and built by a consortium consisting of IPAG (Grenoble, France), MPIA (Heidelberg, Germany), LAM (Marseille, France), LESIA (Paris, France), Laboratoire Lagrange (Nice, France), INAF Osservatorio di Padova (Italy), Observatoire de Genève (Switzerland), ETH Zurich (Switzerland), NOVA (Netherlands), ONERA (France), and ASTRON (Netherlands) in collaboration with ESO. SPHERE was funded by ESO, with additional contributions from CNRS (France), MPIA (Germany), INAF (Italy), FINES (Switzerland), and NOVA (Netherlands).

SPHERE also received funding from the European Commission Sixth and Seventh Framework Programmes as part of the Optical Infrared Coordination Network for Astronomy (OPTICON) under grant number RII3-Ct-2004-001566 for FP6 (20042008), grant number 226604 for FP7 (20092012), and grant number 312430 for FP7 (20132016).

This research has made use of the SIMBAD and VizieR databases, operated at CDS, Strasbourg, France, the Database of Ultracool Parallaxes maintained by Trent Dupuy, and the Washington Double Star Catalog maintained by the U.S. Naval Observatory at <http://www.usno.navy.mil/USNO/astrometry/optical-IR-prod/wds/WDS>. This research has benefited from the SpeX Prism Library (or SpeX Prism Library Analysis Toolkit), maintained by Adam Burgasser at <http://www.browndwarfs.org/spexprism>, the IRTF Spectral Library, maintained by Michael Cushing, and the Montreal Brown Dwarf and Exoplanet Spectral Library, maintained by Jonathan Gagné.

J.R., R.D., and D.L. acknowledge support from the Fonds de Recherche du Québec. J.R.M.'s work was performed in part under contract with the California Institute of Technology (Caltech)/Jet Propulsion Laboratory (JPL) funded by NASA through the Sagan Fellowship Program executed by the NASA Exoplanet Science Institute. Support for M.M.B.'s work was provided by NASA through Hubble Fellowship grant #51378.01-A awarded by the Space Telescope Science Institute, which is operated by the Association of Universities for Research in Astronomy, Inc., for NASA, under contract NAS5-26555. Researchers were supported by NSF grants AST-1411868 (K.B.F., B.M., and J.P.), AST-141378 (G.D.), and AST-1518332 (R.D.R., J.J.W., T.M.E., J.R.G., P.G.K.). Researchers were supported by NASA grants NNX14AJ80G (E.L.N., S.C.B., B.M., F.M., and M.P.), NNX15AC89G and NNX15AD95G (B.M., J.E.W., T.M.E., R.J.D.R., G.D., J.R.G., P.G.K.) and NNX16AD44G (K.M.M.). K.W.D. is supported by an NRAO Student Observing Support Award SOSPA3-007. Portions of this work were performed under the auspices of the U.S. Department of Energy by Lawrence Livermore National Laboratory under Contract DE-AC52-07NA27344. This work benefited from the NASA Nexus for Exoplanet System Science (NExSS) research coordination network sponsored by the NASA Science Mission Directorate.

Facilities: Gemini:South (GPI), VLT:Melipal (SPHERE), Keck:II (NIRC2).

Software: Astropy (Astropy Collaboration et al. 2013), emcee (Foreman-Mackey et al. 2013), GPI DRP (Perrin et al. 2016), IDL Astronomy Library (Landsman 1993), pyKLIP (Wang et al. 2015), SPHERE DRH (Pavlov et al. 2008), SPHERE IFS (Vigan et al. 2015).

Appendix Flux-calibrated Spectrum of HD 131399 Ab

In Table 8, we give the SEDs of HD 131399 A and Ab from the SPHERE data. Table 9 shows the SEDs from the GPI observations.

Table 8
SPHERE *YJH* Spectral Energy Distribution of HD 131399 A and Ab and Corresponding 68% Confidence Intervals

Wavelength (μm)	$F_{\lambda}(\text{A}) \times 10^{-12}$ ($\text{W m}^{-2} \mu\text{m}^{-1}$)	Contrast ($\times 10^{-6}$)	$F_{\lambda}(\text{Ab}) \times 10^{-17}$ ($\text{W m}^{-2} \mu\text{m}^{-1}$)
0.966	11.90 ± 0.15	3.82 ± 2.92	4.53 ± 3.46
0.978	11.67 ± 0.15	0.70 ± 1.21	0.81 ± 1.41
0.992	11.01 ± 0.14	1.59 ± 1.66	1.75 ± 1.83
1.008	10.22 ± 0.14	2.84 ± 1.78	2.90 ± 1.82
1.026	10.01 ± 0.13	3.07 ± 1.81	3.07 ± 1.82
1.043	9.66 ± 0.13	2.77 ± 1.65	2.68 ± 1.59
1.062	9.17 ± 0.13	3.33 ± 1.65	3.04 ± 1.51
1.079	8.39 ± 0.12	4.06 ± 1.65	3.41 ± 1.39
1.096	7.67 ± 0.11	4.26 ± 1.77	3.26 ± 1.36
1.114	7.53 ± 0.10	2.71 ± 2.02	2.03 ± 1.52
1.136	7.19 ± 0.10	2.89 ± 2.18	2.08 ± 1.57
1.156	6.77 ± 0.10	4.21 ± 2.27	2.85 ± 1.54
1.174	6.43 ± 0.09	5.89 ± 2.02	3.79 ± 1.30
1.192	6.14 ± 0.09	7.75 ± 2.01	4.76 ± 1.23
1.211	5.81 ± 0.08	4.74 ± 1.66	2.75 ± 0.96
1.229	5.51 ± 0.08	5.07 ± 1.50	2.80 ± 0.83
1.248	5.23 ± 0.08	5.28 ± 2.01	2.75 ± 1.06
1.267	4.85 ± 0.07	7.22 ± 2.02	3.50 ± 0.98
1.287	4.49 ± 0.07	5.19 ± 1.93	2.33 ± 0.87
1.304	4.44 ± 0.07	5.66 ± 2.10	2.51 ± 0.93
1.318	4.33 ± 0.06	4.54 ± 2.52	1.97 ± 1.09
1.331	4.20 ± 0.06	2.63 ± 2.74	1.10 ± 1.15
1.343	4.07 ± 0.06	3.13 ± 5.13	1.27 ± 2.09
1.378	3.72 ± 0.06	5.45 ± 3.63	2.03 ± 1.35
1.413	3.41 ± 0.05	3.52 ± 4.25	1.20 ± 1.45
1.429	3.27 ± 0.05	1.67 ± 3.13	0.55 ± 1.03
1.445	3.14 ± 0.05	2.51 ± 4.17	0.80 ± 1.31
1.461	3.01 ± 0.05	2.21 ± 2.49	0.67 ± 0.75
1.478	2.87 ± 0.04	2.01 ± 2.27	0.57 ± 0.65
1.496	2.73 ± 0.04	3.18 ± 3.01	0.87 ± 0.82
1.512	2.61 ± 0.04	4.81 ± 2.69	1.25 ± 0.70
1.529	2.51 ± 0.04	5.96 ± 2.19	1.49 ± 0.55
1.546	2.41 ± 0.04	5.24 ± 2.23	1.26 ± 0.54
1.563	2.32 ± 0.04	5.07 ± 2.46	1.18 ± 0.57
1.580	2.24 ± 0.04	5.39 ± 2.13	1.21 ± 0.48
1.598	2.17 ± 0.03	7.92 ± 2.16	1.72 ± 0.47
1.614	2.10 ± 0.03	7.77 ± 2.49	1.63 ± 0.52
1.629	2.04 ± 0.03	7.16 ± 2.74	1.46 ± 0.56
1.641	1.99 ± 0.03	6.09 ± 3.73	1.22 ± 0.74

Table 9
GPI *JHKI* Spectral Energy Distribution of HD 131399 A and Ab and
Corresponding 68% Confidence Intervals

Wavelength (μm)	$F_{\lambda}(\text{A}) \times 10^{-12}$ ($\text{W m}^{-2} \mu\text{m}^{-1}$)	Contrast ^a ($\times 10^{-6}$)	$F_{\lambda}(\text{Ab})^a \times 10^{-17}$ ($\text{W m}^{-2} \mu\text{m}^{-1}$)
1.114	7.59 ± 0.10	1.55 ± 1.48	1.17 ± 1.13
1.121	7.49 ± 0.10	1.88 ± 1.58	1.41 ± 1.19
1.127	7.35 ± 0.10	3.19 ± 1.87	2.35 ± 1.38
1.134	7.23 ± 0.10	4.36 ± 1.78	3.16 ± 1.29
1.140	7.11 ± 0.10	4.96 ± 1.62	3.53 ± 1.15
1.147	6.99 ± 0.10	5.34 ± 1.50	3.74 ± 1.05
1.153	6.84 ± 0.10	4.99 ± 1.31	3.41 ± 0.90
1.160	6.69 ± 0.10	4.69 ± 1.21	3.14 ± 0.81
1.166	6.55 ± 0.09	5.03 ± 0.94	3.30 ± 0.62
1.173	6.43 ± 0.09	4.83 ± 0.96	3.10 ± 0.62
1.180	6.32 ± 0.09	4.79 ± 0.98	3.03 ± 0.62
1.186	6.22 ± 0.09	4.86 ± 1.05	3.02 ± 0.65
1.193	6.11 ± 0.09	5.03 ± 1.10	3.07 ± 0.67
1.199	6.00 ± 0.09	4.90 ± 1.07	2.94 ± 0.64
1.206	5.89 ± 0.08	4.58 ± 1.10	2.70 ± 0.65
1.212	5.78 ± 0.08	4.17 ± 1.20	2.41 ± 0.69
1.219	5.68 ± 0.08	4.21 ± 1.17	2.39 ± 0.67
1.225	5.58 ± 0.08	4.26 ± 1.12	2.37 ± 0.63
1.232	5.48 ± 0.08	4.52 ± 1.14	2.47 ± 0.62
1.238	5.38 ± 0.08	4.41 ± 1.07	2.37 ± 0.58
1.245	5.28 ± 0.08	4.13 ± 0.99	2.18 ± 0.52
1.252	5.18 ± 0.07	4.19 ± 1.07	2.17 ± 0.55
1.258	5.07 ± 0.07	4.77 ± 1.10	2.41 ± 0.56
1.265	4.92 ± 0.07	4.98 ± 1.27	2.45 ± 0.63
1.271	4.74 ± 0.07	4.93 ± 1.22	2.34 ± 0.58
1.278	4.55 ± 0.07	5.02 ± 1.26	2.29 ± 0.57
1.284	4.45 ± 0.07	5.26 ± 1.31	2.34 ± 0.58
1.291	4.44 ± 0.07	5.75 ± 1.36	2.55 ± 0.60
1.297	4.47 ± 0.07	6.29 ± 1.41	2.81 ± 0.63
1.304	4.47 ± 0.07	6.51 ± 1.39	2.90 ± 0.62
1.310	4.42 ± 0.06	5.95 ± 1.40	2.63 ± 0.62
1.317	4.35 ± 0.06	5.33 ± 1.47	2.32 ± 0.64
1.324	4.28 ± 0.06	5.26 ± 1.44	2.25 ± 0.62
1.330	4.21 ± 0.06	5.76 ± 1.50	2.43 ± 0.63
1.337	4.14 ± 0.06	5.67 ± 1.56	2.35 ± 0.65
1.343	4.07 ± 0.06	5.15 ± 1.49	2.09 ± 0.61
1.350	4.00 ± 0.06	3.67 ± 1.93	1.47 ± 0.78
1.495	2.73 ± 0.04	5.38 ± 1.46	1.47 ± 0.40
1.503	2.67 ± 0.04	5.66 ± 1.09	1.51 ± 0.29
1.511	2.61 ± 0.04	6.18 ± 0.93	1.61 ± 0.24
1.520	2.56 ± 0.04	6.62 ± 0.85	1.69 ± 0.22
1.528	2.51 ± 0.04	6.65 ± 0.82	1.67 ± 0.21
1.537	2.46 ± 0.04	6.24 ± 0.83	1.53 ± 0.21
1.545	2.42 ± 0.04	6.37 ± 0.84	1.54 ± 0.20
1.553	2.37 ± 0.04	6.10 ± 0.77	1.45 ± 0.19
1.562	2.33 ± 0.04	6.11 ± 0.74	1.43 ± 0.17
1.570	2.29 ± 0.04	6.12 ± 0.76	1.40 ± 0.18
1.579	2.25 ± 0.04	5.79 ± 0.73	1.30 ± 0.17
1.587	2.21 ± 0.03	5.70 ± 0.72	1.26 ± 0.16
1.596	2.18 ± 0.03	6.03 ± 0.73	1.31 ± 0.16
1.604	2.14 ± 0.03	5.88 ± 0.71	1.26 ± 0.15
1.612	2.11 ± 0.03	6.18 ± 0.69	1.30 ± 0.15
1.621	2.09 ± 0.03	7.09 ± 0.66	1.48 ± 0.14
1.629	2.05 ± 0.03	7.39 ± 0.69	1.51 ± 0.14
1.638	1.99 ± 0.03	7.09 ± 0.62	1.41 ± 0.12
1.646	1.97 ± 0.03	7.21 ± 0.64	1.42 ± 0.13
1.654	1.97 ± 0.03	7.91 ± 0.73	1.56 ± 0.15
1.663	1.94 ± 0.03	8.81 ± 0.80	1.71 ± 0.16
1.671	1.88 ± 0.03	9.31 ± 0.84	1.75 ± 0.16
1.680	1.82 ± 0.03	8.67 ± 0.90	1.58 ± 0.17
1.688	1.80 ± 0.03	7.40 ± 0.84	1.34 ± 0.15
1.696	1.82 ± 0.03	7.15 ± 0.87	1.30 ± 0.16

Table 9
(Continued)

Wavelength (μm)	$F_{\lambda}(\text{A}) \times 10^{-12}$ ($\text{W m}^{-2} \mu\text{m}^{-1}$)	Contrast ^a ($\times 10^{-6}$)	$F_{\lambda}(\text{Ab})^a \times 10^{-17}$ ($\text{W m}^{-2} \mu\text{m}^{-1}$)
1.705	1.81 ± 0.03	7.36 ± 0.86	1.33 ± 0.16
1.713	1.78 ± 0.03	8.27 ± 0.93	1.47 ± 0.17
1.722	1.72 ± 0.03	8.79 ± 1.00	1.51 ± 0.17
1.730	1.65 ± 0.03	7.91 ± 1.02	1.30 ± 0.17
1.739	1.60 ± 0.03	7.11 ± 1.03	1.14 ± 0.17
1.747	1.60 ± 0.03	6.88 ± 1.02	1.10 ± 0.16
1.755	1.61 ± 0.03	7.87 ± 0.95	1.27 ± 0.16
1.764	1.61 ± 0.03	8.43 ± 0.92	1.35 ± 0.15
1.772	1.59 ± 0.03	7.88 ± 1.02	1.25 ± 0.16
1.781	1.56 ± 0.03	6.63 ± 1.20	1.03 ± 0.19
1.789	1.53 ± 0.02	5.90 ± 1.51	0.90 ± 0.23
1.797	1.49 ± 0.02	7.04 ± 2.13	1.05 ± 0.32
1.886	1.21 ± 0.02	-6.86 ± 10.09	-0.84 ± 1.22
1.895	1.23 ± 0.02	3.61 ± 1.45	0.44 ± 0.18
1.903	1.22 ± 0.02	-1.15 ± 1.88	-0.14 ± 0.23
1.912	1.20 ± 0.02	-0.61 ± 1.44	-0.07 ± 0.17
1.920	1.18 ± 0.02	-0.82 ± 0.36	-0.10 ± 0.04
1.929	1.14 ± 0.02	2.48 ± 1.01	0.28 ± 0.12
1.938	1.08 ± 0.02	12.20 ± 4.99	1.33 ± 0.54
1.946	1.05 ± 0.02	7.43 ± 3.43	0.78 ± 0.36
1.955	1.06 ± 0.02	4.25 ± 1.86	0.45 ± 0.20
1.963	1.07 ± 0.02	5.13 ± 2.15	0.55 ± 0.23
1.972	1.07 ± 0.02	10.09 ± 3.21	1.08 ± 0.34
1.981	1.06 ± 0.02	8.67 ± 2.99	0.92 ± 0.32
1.989	1.04 ± 0.02	8.94 ± 2.81	0.93 ± 0.29
1.998	1.03 ± 0.02	8.86 ± 3.22	0.91 ± 0.33
2.006	1.01 ± 0.02	10.61 ± 3.42	1.07 ± 0.35
2.015	0.99 ± 0.02	10.47 ± 3.36	1.04 ± 0.33
2.023	0.98 ± 0.02	6.44 ± 2.56	0.63 ± 0.25
2.032	0.96 ± 0.02	9.15 ± 2.84	0.88 ± 0.27
2.041	0.95 ± 0.02	10.85 ± 2.81	1.03 ± 0.27
2.049	0.93 ± 0.02	8.69 ± 2.60	0.81 ± 0.24
2.058	0.92 ± 0.02	7.83 ± 2.69	0.72 ± 0.25
2.066	0.91 ± 0.02	12.11 ± 3.11	1.09 ± 0.28
2.075	0.89 ± 0.02	10.24 ± 2.74	0.91 ± 0.25
2.084	0.88 ± 0.01	11.42 ± 2.85	1.00 ± 0.25
2.092	0.86 ± 0.01	12.42 ± 2.63	1.07 ± 0.23
2.101	0.85 ± 0.01	10.68 ± 3.14	0.91 ± 0.27
2.109	0.84 ± 0.01	9.01 ± 3.12	0.75 ± 0.26
2.118	0.82 ± 0.01	12.97 ± 3.67	1.07 ± 0.30
2.126	0.81 ± 0.01	13.44 ± 3.61	1.09 ± 0.30
2.135	0.80 ± 0.01	8.35 ± 3.30	0.67 ± 0.26
2.144	0.78 ± 0.01	8.63 ± 3.39	0.68 ± 0.26
2.152	0.76 ± 0.01	8.99 ± 3.52	0.68 ± 0.27
2.161	0.72 ± 0.01	5.49 ± 2.38	0.40 ± 0.17
2.169	0.71 ± 0.01	6.43 ± 2.86	0.45 ± 0.20
2.178	0.72 ± 0.01	7.77 ± 3.17	0.56 ± 0.23
2.187	0.72 ± 0.01	-4.05 ± 1.87	-0.29 ± 0.14
2.195	0.72 ± 0.01	10.64 ± 4.20	0.77 ± 0.30

Note.

^a The uncertainties on the contrast and flux do not take into account the uncertainty on the systematic star-to-spot flux ratio used to convert contrasts measured with respect to the satellite spots into source-to-star contrasts. These systematic uncertainties are 3% at *J*, 5% at *H*, and 6% at *K1* (Maire et al. 2014).

ORCID iDs

Eric L. Nielsen  <https://orcid.org/0000-0001-6975-9056>
Robert J. De Rosa  <https://orcid.org/0000-0002-4918-0247>
Julien Rameau  <https://orcid.org/0000-0003-0029-0258>

Jason J. Wang  <https://orcid.org/0000-0003-0774-6502>
 Thomas M. Esposito  <https://orcid.org/0000-0002-0792-3719>
 Maxwell A. Millar-Blanchaer  <https://orcid.org/0000-0001-6205-9233>
 Christian Marois  <https://orcid.org/0000-0002-4164-4182>
 S. Mark Ammons  <https://orcid.org/0000-0001-5172-7902>
 Etienne Artigau  <https://orcid.org/0000-0003-3506-5667>
 Sarah Blunt  <https://orcid.org/0000-0002-3199-2888>
 Joanna Bulger  <https://orcid.org/0000-0003-4641-2003>
 Jeffrey Chilcote  <https://orcid.org/0000-0001-6305-7272>
 Tara Cotten  <https://orcid.org/0000-0003-0156-3019>
 Gaspard Duchêne  <https://orcid.org/0000-0002-5092-6464>
 Michael P. Fitzgerald  <https://orcid.org/0000-0002-0176-8973>
 Katherine B. Follette  <https://orcid.org/0000-0002-7821-0695>
 Benjamin L. Gerard  <https://orcid.org/0000-0003-3978-9195>
 Stephen J. Goodsell  <https://orcid.org/0000-0002-4144-5116>
 Alexandra Z. Greenbaum  <https://orcid.org/0000-0002-7162-8036>
 Pascale Hibon  <https://orcid.org/0000-0003-3726-5494>
 Sasha Hinkley  <https://orcid.org/0000-0001-8074-2562>
 Li-Wei Hung  <https://orcid.org/0000-0003-1498-6088>
 Patrick Ingraham  <https://orcid.org/0000-0003-3715-8138>
 Rebecca Jensen-Clem  <https://orcid.org/0000-0003-0054-2953>
 Quinn Konopacky  <https://orcid.org/0000-0002-9936-6285>
 James E. Larkin  <https://orcid.org/0000-0001-7687-3965>
 Bruce Macintosh  <https://orcid.org/0000-0003-1212-7538>
 Franck Marchis  <https://orcid.org/0000-0001-7016-7277>
 Stanimir Metchev  <https://orcid.org/0000-0003-3050-8203>
 Katie M. Morzinski  <https://orcid.org/0000-0002-1384-0063>
 Rebecca Oppenheimer  <https://orcid.org/0000-0001-7130-7681>
 David Palmer  <https://orcid.org/0000-0001-7128-0802>
 Marshall Perrin  <https://orcid.org/0000-0002-3191-8151>
 Roman R. Rafikov  <https://orcid.org/0000-0002-0012-1609>
 Abhijith Rajan  <https://orcid.org/0000-0002-9246-5467>
 Fredrik T. Rantakyö  <https://orcid.org/0000-0002-9667-2244>
 Jean-Baptiste Ruffio  <https://orcid.org/0000-0003-2233-4821>
 Dmitry Savransky  <https://orcid.org/0000-0002-8711-7206>
 Adam C. Schneider  <https://orcid.org/0000-0002-6294-5937>
 Anand Sivaramakrishnan  <https://orcid.org/0000-0003-1251-4124>
 Inseok Song  <https://orcid.org/0000-0002-5815-7372>
 Remi Soummer  <https://orcid.org/0000-0003-2753-2819>
 Sandrine Thomas  <https://orcid.org/0000-0002-9121-3436>
 Kimberly Ward-Duong  <https://orcid.org/0000-0002-4479-8291>
 Sloane Wiktorowicz  <https://orcid.org/0000-0003-4483-5037>
 Schuyler Wolff  <https://orcid.org/0000-0002-9977-8255>

References

- Allard, F., Homeier, D., & Freytag, B. 2012, *RSPTA*, 370, 2765
 Astropy Collaboration, Robitaille, T. P., Tollerud, E. J., et al. 2013, *A&A*, 558, A33
 Bailer-Jones, C. A. L. 2015, *PASP*, 127, 994
 Baraffe, I., Chabrier, G., Barman, T. S., Allard, F., & Hauschildt, P. H. 2003, *A&A*, 402, 701
 Barman, T. S., Macintosh, B., Konopacky, Q. M., & Marois, C. 2011, *ApJ*, 733, 65
 Bastian, U., & Röser, S. 1993, PPM Star Catalogue. Positions and Proper Motions of 197179 Stars South of -2.5 degrees Declination for Equinox and Epoch J2000.0. Vol. III: Zones -00 to -20 . Vol. IV: Zones -30° to -80° (Heidelberg: Spektrum Akademischer Verlag)
 Bessell, M., & Murphy, S. 2012, *PASP*, 124, 140
 Beuzit, J.-L., Feldt, M., Dohlen, K., et al. 2008, *Proc. SPIE*, 7014, 701418
 Blunt, S., Nielsen, E. L., De Rosa, R. J., et al. 2017, *AJ*, 153, 229
 Bohlin, R. C. 2014, *AJ*, 147, 127
 Bubar, E. J., Schaeuble, M., King, J. R., Mamajek, E. E., & Stauffer, J. R. 2011, *AJ*, 142, 180
 Burgasser, A. J. 2014, in Astronomical Society of India Conf. Ser., 11, 7
 Burgasser, A. J., Burrows, A., & Kirkpatrick, J. D. 2006a, *ApJ*, 639, 1095
 Burgasser, A. J., Geballe, T. R., Leggett, S. K., Kirkpatrick, J. D., & Golimowski, D. A. 2006b, *ApJ*, 637, 1067
 Burgasser, A. J., & McElwain, M. W. 2006, *AJ*, 131, 1007
 Burgasser, A. J., McElwain, M. W., Kirkpatrick, J. D., et al. 2004, *AJ*, 127, 2856
 Cardelli, J. A., Clayton, G. C., & Mathis, J. S. 1989, *ApJ*, 345, 245
 Carson, J., Thalmann, C., Janson, M., et al. 2013, *ApJL*, 763, L32
 Chauvin, G., Desidera, S., Lagrange, A.-M., et al. 2017, arXiv:1707.01413
 Chauvin, G., Lagrange, A.-M., Dumas, C., et al. 2004, *A&A*, 425, L29
 Chauvin, G., Lagrange, A.-M., Zuckerman, B., et al. 2005, *A&A*, 438, L29
 Chen, C. H., Pecaut, M., Mamajek, E. E., Su, K. Y. L., & Bitner, M. 2012, *ApJ*, 756, 133
 Chilcote, J. K., Larkin, J. E., Maire, J., et al. 2012, *Proc. SPIE*, 8446, 84468W
 Chiu, K., Fan, X., Leggett, S. K., et al. 2006, *AJ*, 131, 2722
 Choi, J., Dotter, A., Conroy, C., et al. 2016, *ApJ*, 823, 102
 Claudi, R. U., Turatto, M., Gratton, R. G., et al. 2008, *Proc. SPIE*, 7014, 70143E
 Cohen, M., Wheaton, W. A., & Megeath, S. T. 2003, *AJ*, 126, 1090
 Cumming, A., Butler, R. P., Marcy, G. W., et al. 2008, *PASP*, 120, 531
 Currie, T., Burrows, A., Girard, J. H., et al. 2014, *ApJ*, 795, 133
 Cushing, M. C., Rayner, J. T., & Vacca, W. D. 2005, *ApJ*, 623, 1115
 de Geus, E. J., de Zeeuw, P. T., & Lub, J. 1989, *A&A*, 216, 44
 De Rosa, R. J., Nielsen, E. L., Blunt, S. C., et al. 2015, *ApJL*, 814, L3
 De Rosa, R. J., Rameau, J., Patience, J., et al. 2016, *ApJ*, 824, 121
 de Zeeuw, P. T., Hoogerwerf, R., de Bruijne, J. H. J., Brown, A. G. A., & Blaauw, A. 1999, *AJ*, 117, 354
 Delorme, P., Gagné, J., Girard, J. H., et al. 2013, *A&A*, 553, L5
 Dohlen, K., Langlois, M., Saisse, M., et al. 2008, *Proc. SPIE*, 7014, 70143L
 Dommanget, J., & Nys, O. 2002, *yCat*, 1274, 0
 Dotter, A. 2016, *ApJS*, 222, 8
 Dupuy, T. J., & Kraus, A. L. 2013, *Sci*, 341, 1492
 Dupuy, T. J., & Liu, M. C. 2012, *ApJS*, 201, 19
 ESA 1997, The Hipparcos and Tycho Catalogues, ESA SP-1200 (Noordwijk: ESA Publications Division)
 Foreman-Mackey, D., Hogg, D. W., Lang, D., & Goodman, J. 2013, *PASP*, 125, 306
 Gagné, J., Faherty, J. K., Cruz, K. L., et al. 2015, *ApJS*, 219, 33
 Hauck, B. 1986, *A&AS*, 64, 21
 Høg, E., Fabricius, C., Makarov, V. V., et al. 2000, *A&A*, 355, L27
 Holman, M. J., & Wiegert, P. A. 1999, *AJ*, 117, 621
 Houk, N., & Smith-Moore, M. (ed.) 1988, Michigan Catalogue of Two-dimensional Spectral Types for the HD Stars Vol. 4, Declinations -26.0 to -12.0 (Ann Arbor, MI: Univ. Michigan Press)
 Houk, N. (ed.) 1982, Michigan Catalogue of Two-dimensional Spectral Types for the HD stars, Vol. 3 Declinations -40 to -26 (Ann Arbor, MI: Univ. Michigan Press)
 Ingraham, P., Marley, M. S., Saumon, D., et al. 2014a, *ApJ*, 794, L15
 Ingraham, P., Perrin, M. D., Sadakuni, N., et al. 2014b, *Proc. SPIE*, 9147, 914770
 Kalas, P., Graham, J. R., Chiang, E., et al. 2008, *Sci*, 322, 1345
 Kirkpatrick, J. D., Looper, D. L., Burgasser, A. J., et al. 2010, *ApJS*, 190, 100
 Konopacky, Q. M., Thomas, S. J., Macintosh, B. A., et al. 2014, *Proc. SPIE*, 9147, 914784
 Kroupa, P. 2001, *MNRAS*, 322, 231
 Lafrenière, D., Marois, C., Doyon, R., Nadeau, D., & Artigau, É. 2007, *ApJ*, 660, 770
 Lagrange, A.-M., Bonnefoy, M., Chauvin, G., et al. 2010, *Sci*, 329, 57
 Landsman, W. B. 1993, in ASP Conf. Ser. 52, Astronomical Data Analysis Software and Systems II, ed. R. J. Hanisch, R. J. V. Brissenden, & J. Barnes (San Francisco, CA: ASP), 246

- Lindgren, L., Lammers, U., Bastian, U., et al. 2016, [A&A](#), **595**, A4
- Liu, M. C., Dupuy, T. J., & Allers, K. N. 2016, [ApJ](#), **833**, 96
- Lord, S. D. 1992, NASA Technical Memorandum, 103957, 1
- Luhman, K. L., Patten, B. M., Marengo, M., et al. 2007, [ApJ](#), **654**, 570
- Macintosh, B., Graham, J. R., Barman, T., et al. 2015, [Sci](#), **350**, 64
- Macintosh, B., Graham, J. R., Ingraham, P., et al. 2014, [PNAS](#), **111**, 12661
- Maeder, A. 2009, *Physics, Formation and Evolution of Rotating Stars* (Berlin: Springer)
- Maire, A.-L., Langlois, M., Dohlen, K., et al. 2016, [Proc. SPIE](#), **9908**, 990834
- Maire, J., Ingraham, P. J., De Rosa, R. J., et al. 2014, [Proc. SPIE](#), **9147**, 914785
- Malhotra, R. 2002, [ApJL](#), **575**, L33
- Mamajek, E. E., Bartlett, J. L., Seifahrt, A., et al. 2013, [AJ](#), **146**, 154
- Mann, A. W., & von Braun, K. 2015, [PASP](#), **127**, 102
- Marois, C., Lafrenière, D., Doyon, R., Macintosh, B., & Nadeau, D. 2006, [ApJ](#), **641**, 556
- Marois, C., Macintosh, B., Barman, T., et al. 2008, [Sci](#), **322**, 1348
- Marois, C., Macintosh, B., & Véran, J.-P. 2010, [Proc. SPIE](#), **7736**, 77361J
- Mermilliod, J. C., Mermilliod, M., & Hauck, B. 1997, [A&AS](#), **124**, 349
- Moehler, S., Modigliani, A., Freudling, W., et al. 2014, [A&A](#), **568**, A9
- Montet, B. T., Bowler, B. P., Shkolnik, E. L., et al. 2015, [ApJL](#), **813**, L11
- Nelder, J. A., & Mead, R. 1965, [CompJ](#), **7**, 308
- Nielsen, E. L., & Close, L. M. 2010, [ApJ](#), **717**, 878
- Nielsen, E. L., Liu, M. C., Wahhaj, Z., et al. 2013, [ApJ](#), **776**, 4
- Pavlov, A., Möller-Nilsson, O., Feldt, M., et al. 2008, [Proc. SPIE](#), **7019**, 701939
- Pecaut, M. J., & Mamajek, E. E. 2013, [ApJS](#), **208**, 9
- Pecaut, M. J., & Mamajek, E. E. 2016, [MNRAS](#), **461**, 794
- Perrin, M. D., Ingraham, P., Follette, K. B., et al. 2016, [Proc. SPIE](#), **9908**, 990837
- Perrin, M. D., Maire, J., Ingraham, P., et al. 2014, [Proc. SPIE](#), **9147**, 91473J
- Platais, I., Girard, T. M., Kozhurina-Platais, V., et al. 1998, [AJ](#), **116**, 2556
- Quanz, S. P., Amara, A., Meyer, M. R., et al. 2013, [ApJL](#), **766**, L1
- Rajan, A., Rameau, J., De Rosa, R. J., et al. 2017, arXiv:1705.03887
- Rameau, J., Chauvin, G., Lagrange, A.-M., et al. 2013, [ApJL](#), **772**, L15
- Rameau, J., Nielsen, E. L., De Rosa, R. J., et al. 2016, [ApJL](#), **822**, L29
- Rayner, J. T., Cushing, M. C., & Vacca, W. D. 2009, [ApJS](#), **185**, 289
- Rizzuto, A. C., Ireland, M. J., & Robertson, J. G. 2011, [MNRAS](#), **416**, 3108
- Robert, J., Gagné, J., Artigau, É., et al. 2016, [ApJ](#), **830**, 144
- Robin, A. C., Reylé, C., Derrière, S., & Picaud, S. 2003, [A&A](#), **409**, 523
- Rodet, L., Beust, H., Bonnefoy, M., et al. 2017, arXiv:1703.01857
- Ruffio, J.-B., Macintosh, B., Wang, J. J., et al. 2017, [ApJ](#), **842**, 14
- Samland, M., Mollière, P., Bonnefoy, M., et al. 2017, [A&A](#), **603**, A57
- Sartori, M. J., Lépine, J. R. D., & Dias, W. S. 2003, [A&A](#), **404**, 913
- Service, M., Lu, J. R., Campbell, R., et al. 2016, [PASP](#), **128**, 095004
- Skemer, A. J., Hinz, P. M., Esposito, S., et al. 2012, [ApJ](#), **753**, 14
- Skrutskie, M. F., Cutri, R. M., Stiening, R., et al. 2006, [AJ](#), **131**, 1163
- Soummer, R., Pueyo, L., & Larkin, J. 2012, [ApJL](#), **755**, L28
- Strom, S. E., Wolff, S. C., & Dror, D. H. A. 2005, [AJ](#), **129**, 809
- van Leeuwen, F. 2007, [A&A](#), **474**, 653
- Veras, D., Crepp, J. R., & Ford, E. B. 2009, [ApJ](#), **696**, 1600
- Vigan, A., Gry, C., Salter, G., et al. 2015, [MNRAS](#), **454**, 129
- Vigan, A., Moutou, C., Langlois, M., et al. 2010, [MNRAS](#), **407**, 71
- Wagner, K., Apai, D., Kasper, M., et al. 2016, [Sci](#), **353**, 673
- Wang, J. J., Graham, J. R., Pueyo, L., et al. 2016, [AJ](#), **152**, 97
- Wang, J. J., Rajan, A., Graham, J. R., et al. 2014, [Proc. SPIE](#), **9147**, 914755
- Wang, J. J., Ruffio, J.-B., De Rosa, R. J., et al. 2015, pyKLIP: PSF Subtraction for Exoplanets and Disks, Astrophysics Source Code Library, ascl:1506.001
- Wizinowich, P. L., Chin, J., Johansson, E., et al. 2006, [Proc. SPIE](#), **6272**, 627209
- Wolff, S. G., Perrin, M. D., Maire, J., et al. 2014, [Proc. SPIE](#), **9147**, 91477H
- Zurlo, A., Vigan, A., Galicher, R., et al. 2016, [A&A](#), **587**, A57