



PERSPECTIVE • OPEN ACCESS

A perspective on climate change from Earth's energy imbalance

To cite this article: Kevin E Trenberth and Lijing Cheng 2022 *Environ. Res.: Climate* 1 013001

View the [article online](#) for updates and enhancements.

You may also like

- [Mechanism of the wintertime subseasonal surface air temperature variability over Eurasia](#)
Weina Guan and Lin Wang
- [Long-term ENSO prediction with echo-state networks](#)
Forough Hassanibesheli, Jürgen Kurths and Niklas Boers
- [Heat exposure and resilience planning in Atlanta, Georgia](#)
Nkosi Muse, David M Iwaniec, Chris Wyczalkowski et al.

ENVIRONMENTAL RESEARCH CLIMATE



PERSPECTIVE

A perspective on climate change from Earth's energy imbalance

Kevin E Trenberth^{1,2,*}  and Lijing Cheng³ 

¹ National Center for Atmospheric Research, Boulder, CO, United States of America

² University of Auckland, 127A Churchill Road, Rothesay Bay, Auckland 0630, New Zealand

³ Institute of Atmospheric Physics, Chinese Academy of Sciences, Beijing, People's Republic of China

* Author to whom any correspondence should be addressed.

E-mail: trenbert@ucar.edu

Keywords: absorbed solar radiation, outgoing longwave radiation, Earth energy imbalance, ocean heat content, climate change, Earth temperatures

RECEIVED

2 March 2022

REVISED

20 April 2022

ACCEPTED FOR PUBLICATION

13 May 2022

PUBLISHED

4 July 2022

Original content from this work may be used under the terms of the [Creative Commons Attribution 4.0 licence](https://creativecommons.org/licenses/by/4.0/).

Any further distribution of this work must maintain attribution to the author(s) and the title of the work, journal citation and DOI.



1. The warming Earth

The Earth is warming from human activities, primarily because of increases in carbon dioxide and other greenhouse gases (GHGs) in the atmosphere that reduce the outgoing infrared radiation from the planet escaping to space. This creates an energy imbalance at the top-of-atmosphere (TOA) called Earth's energy imbalance (EEI). It creates heating of the planet, which is manifested in multiple ways, only one of which is the rise in global mean surface temperature (GMST) (figure 1). The latter has been the primary focus for tracking global warming and 2021 was rated as the fifth or sixth highest on record, but the top 8 warmest years have all occurred since 2013 (figure 1).

The EEI is arguably the most important metric related to climate change. It is the net result of all the processes and feedbacks in play in the climate system. However, it is also important to recognize the components of radiation at TOA, the absorbed solar radiation (ASR) and net outgoing longwave radiation (OLR). The ASR is the net incoming after reflected radiation is accounted for and varies with clouds. The net EEI is the ASR-OLR. A key reason for this breakdown relates to proposed geoengineering, in particular, so-called solar radiation management (SRM), a euphemistic name if ever there was one (Trenberth 2022). SRM alters ASR while the problem is trapping of OLR. In between are all the weather systems and hydrological cycle.

The radiative heat is variously transferred into sensible heat (related to temperatures), latent energy (related to changes in phase of water), potential energy (related to gravity and height), and kinetic energy (related to movement), and the richness of the phenomena and transformations among these various forms of energy are what makes this problem both challenging and interesting scientifically.

It is not (yet) possible to measure EEI directly, although changes measured from satellites are believed to be reliable, albeit biased. The only practical way to estimate net EEI is through an inventory of the changes in energy.

2. Assessing EEI

In our assessment of the EEI, the focus is on the well observed period from 2005 to 2019 (see section 3). The EEI is about 460 TW or globally $0.90 \pm 0.15 \text{ W m}^{-2}$ (Trenberth 2022). This can be compared with the net ASR and OLR of about 240 W m^{-2} as an estimate of the flow-through energy. Consequently, the EEI is very small and cannot be directly discerned or measured. Nevertheless, it is very large compared with estimated direct human influences such as the total electricity generated globally (about 5.7 TW in 2018) (Trenberth 2022).

About 93% of the extra heat from the EEI ends up in the ocean as increasing ocean heat content (OHC). In 2022, the global OHC was the highest on record (Cheng *et al* 2022) and the global warming signal in OHC is large compared with the natural variability, unlike GMST, so that trends in OHC can be detected in four years (Cheng *et al* 2018), see figure 2 for example. The second-best signal-to-noise ratio is in the related sea level rise (SLR), as about 40% comes from OHC and the associated expansion of the ocean, while the rest mainly comes from melting of land ice: glaciers, Greenland, Antarctica that puts more water into the ocean.

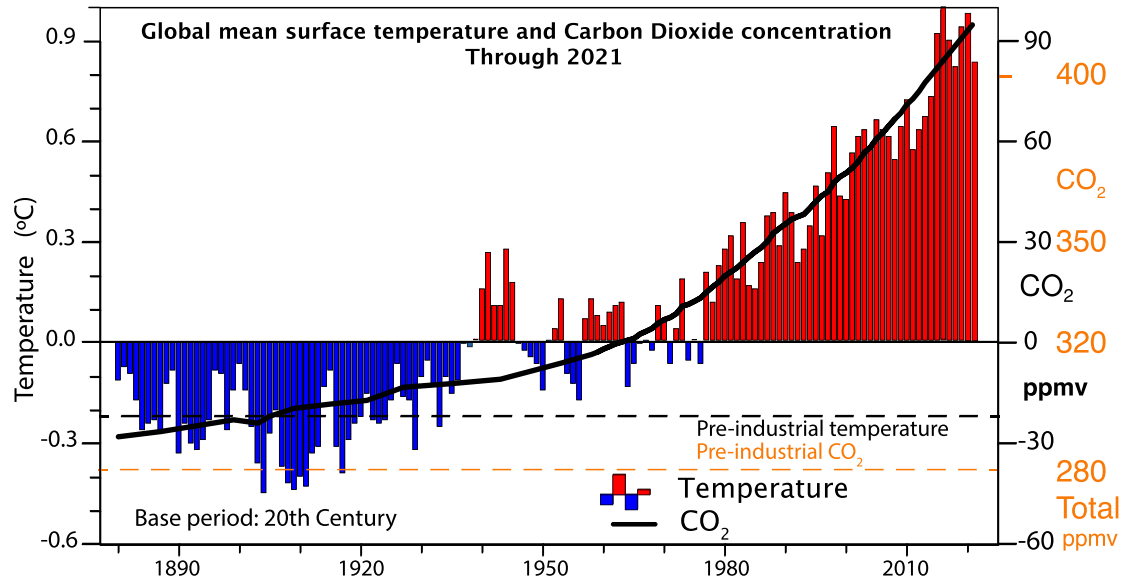


Figure 1. Estimated changes in annual global mean surface temperatures ($^{\circ}\text{C}$, color bars) and CO_2 concentrations (thick black line) over the past 150 years relative to twentieth century average values. Carbon dioxide concentrations since 1957 are from direct measurements at Mauna Loa, Hawaii, while earlier estimates are derived from ice core records. The scale for CO_2 concentrations is in parts per million by volume (ppm), relative to the twentieth century mean of 333.7 ppm, while the temperature anomalies are relative to a mean of 14°C . Also given as dashed values are the preindustrial estimated values, where the value is 280 ppm, with the scale in orange at right for carbon dioxide. Reproduced from Trenberth and Fasullo (2013). © 2013 The Authors. CC BY-NC-ND 3.0.

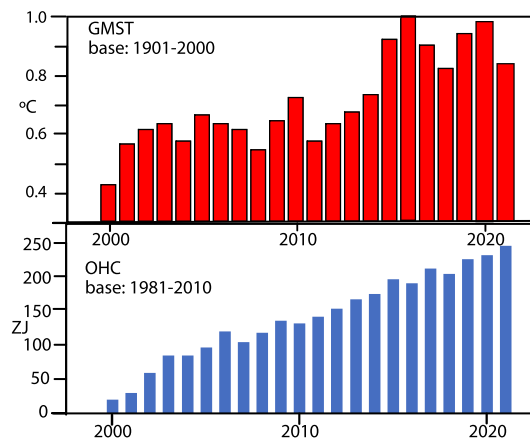


Figure 2. For 2000–2021, GMST as in figure 1, and corresponding OHC in zettajoules relative to a baseline mean for 1981–2010, based on Cheng *et al* (2022).

For SLR the trend detection occurs in about five years while for GMST the trend detection requires more than two decades (Cheng *et al* 2018).

On average nearly 3% of the EEI goes into melting ice and another 4% goes into raising temperatures of land and melting permafrost, while less than 1% remains in the atmosphere. The changes in GMST relate to those on land and sea surface temperatures (SSTs) in the ocean, and the increase in GMST (figure 1) is a consequence. The primary reasons for these distributions of excess heat relate to the heat capacity of these climate system components, the specific heat of water versus land versus air, and the masses involved; see Trenberth (2022) for a comprehensive review.

However, the initial excess energy has profound effects and big impacts along the way to its destination. The radiative energy is mostly absorbed at the surface where it mainly contributes to increased evaporation and moistening of the atmosphere, and is eventually realized as latent heating of the atmosphere during precipitation. This invigorates the hydrological cycle. In regions where it is not raining, it leads to enhanced drying then heating, increasing risk of heat waves and wildfires on land. It increases intensity of droughts. The evaporated moisture, carried by the atmosphere, converges into storms and associated frontal systems, where it increases precipitation rates, increasing risk of flooding on land. The latent heat released may also

intensify some weather systems such as hurricanes and convection (thunderstorms). The warmer moister air is more buoyant and, helped by many weather phenomena, it rises and expands in lower pressures and cools adiabatically, then spreads out maybe thousands of km away and warms as it subsides, thus redistributing energy often to higher and drier regions where it can radiate to space.

In general, all components of the climate system react to heating by trying to get rid of excess heat in one way or another. The most effective method overall globally is radiative cooling as higher temperatures increase radiation by the fourth power of absolute temperature. Moreover, unequal heating leads to gradients that drive instabilities in the atmosphere (convective, baroclinic) and mixing is pervasive. In the ocean, warmer waters and those with lower salinity are less dense, and thermohaline circulations may develop, although most ocean currents are driven by winds. In ice and land, energy may be redistributed by water flows or conduction, but the latter is a very inefficient process.

In the ocean, heating occurs from the top down; warm on top of colder water is a stable configuration so that the stability and stratification of the ocean increase (Li *et al* 2020). Whereas globally, GMST and SSTs have clearly increased since about the 1970s (figure 1), for deeper ocean layers there is a delay that increases with depth. Globally, the top 500 m of the ocean are clearly warming since 1980, for 500–1000 m depth since 1990, 1000–1500 m layer since 1998, and from 1500 to 2000 m since 2005 (Cheng *et al* 2021). Indeed, it is a major challenge for climate models to get this heat penetration right, since it depends on unresolved sub-grid scale processes like mixing and convection, and how well or whether tidal mixing is included. A preliminary check of CMIP6 models reveals too much heating of the deep ocean (too large diffusion) but too little heating of the layers given above. This ocean heat redistribution is a factor in climate sensitivity of models and the errors contribute to too much surface warming.

The GMST was the fifth or sixth warmest on record in 2021 (depends on the dataset), in part, because of the year-long La Niña conditions, in which cool conditions in the tropical Pacific influence weather patterns around the world. Under those conditions the ocean stores extra heat, and then releases heat during El Niño events, making El Niño years like 1998 and 2016 relatively the warmest on record while OHC declines a small but measurable amount. There is also a signal in SLR because more rain occurs over the ocean in El Niño and droughts are more common over land, while more rains and snows occur on land in La Niña events. In the La Niña event in 2011 the extensive rains and snows, especially over North America, Siberia, and Australia (where it led to revival of Lake Eyre) took 5 mm of water out of the global ocean (Boening *et al* 2012).

There is a lot more natural variability in surface air temperatures than in ocean temperatures because of El Niño/La Niña and weather events (figure 2). For the oceans, the natural variability on top of warming creates hot spots locally, sometimes called ‘marine heat waves,’ that vary from year to year but are increasing (Tanaka *et al* 2022). Those hot spots have profound influences on marine life, from tiny plankton to fish, marine mammals, and seabirds. Other hot spots eventually result in more activity in the atmosphere, such as hurricanes (Trenberth *et al* 2018) which then take heat out of the ocean even as some is also mixed deeper.

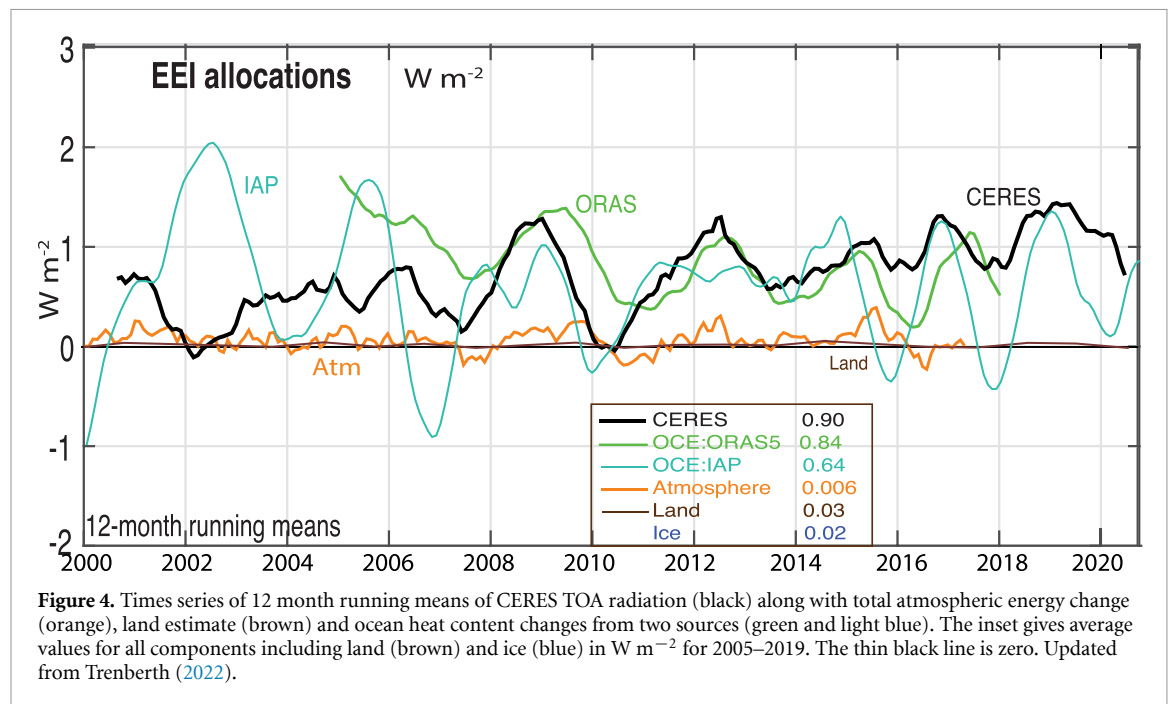
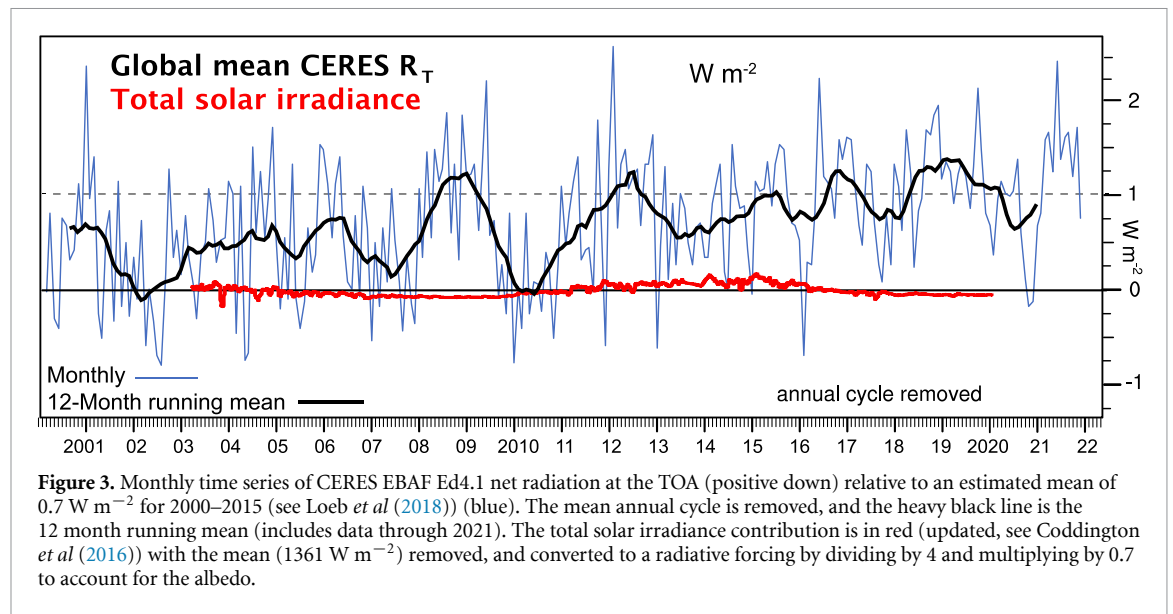
All five oceans are warming (Cheng *et al* 2022), with the largest amounts of warming in the Atlantic Ocean and Southern Ocean surrounding Antarctica. That is a concern for Antarctica’s ice as warmer waters can creep under Antarctica’s ice shelves, thinning them and resulting in calving off huge icebergs.

3. EEI observations

So how well is EEI known and does it matter? The discussion above makes the point that it matters a lot. Knowing how much extra energy affects weather systems and rainfall is vital to understand the increasing weather extremes. Moreover, because those weather events move energy around and help the climate system get rid of energy by radiating it to space, these processes also affect the rise in GMST. In other words, they affect the nature and magnitude of climate change, and have major implications for how well the outcomes can be modeled and predicted.

Climate prediction is based upon comprehensive Earth system models that include modules for the atmosphere, oceans, land, and cryosphere. In the atmosphere such models are used for numerical weather prediction (NWP), and these are now quite sophisticated and enable reliable predictions about ten days in advance, following comprehensive analysis of continual atmospheric observations (over 200 million per day; NOAA 2022) using four-dimensional-data assimilation. Beyond that time frame, chaotic elements destroy deterministic forecasts, but the climate may be projected through knowledge of the interactions with the land, oceans, and ice, which are the main energy reservoirs.

There are good estimates of TOA radiation variations from Clouds and Earth’s Radiant Energy System (CERES) (Loeb *et al* 2018) since March 2000 (figure 3). The exact calibration is not well known because of questions about sampling, especially clouds, but it is thought that the changes throughout the time series are reasonably reliable. In figure 3 the zero is set based upon OHC estimates (Loeb *et al* 2018). There is an apparent trend in the CERES EEI (Loeb *et al* 2021) of $0.4 \text{ W m}^{-2} \text{ decade}^{-1}$ for March 2000–December 2021.



This trend is mainly due to an increase in ASR associated with decreased reflection by reduced Arctic sea-ice, and changes in clouds, reduced aerosols and increases in GHGs.

The Sun is often invoked as a possible source of climate change but contributions from changes in the Sun (figure 3) are very small. All energy from the oceans, land and ice must go through the atmosphere to reach the TOA, and the standard deviation of annual mean TOA net radiation is about three times that of the atmospheric energy tendency (figure 4), highlighting that it is not atmospheric energy or temperatures so much as clouds that cause the TOA variability (Trenberth (2022) for details).

Many estimates of EEI exist. Trenberth *et al* (2009) made an estimate based upon atmospheric energy and surface fluxes. Trenberth (2009) estimated contributions from other components of the climate system, something that was done more thoroughly by Hansen *et al* (2011), and von Schuckmann *et al* (2016) provided a good review of the outstanding issues.

Changes in atmospheric energy are well known (figure 4) from atmospheric reanalyses. For the land, there are no such time series except right at the surface, where the extreme heterogeneity of the land surface in terms of topography, rocks, soil, vegetation and water distributions provides major challenges. Rough estimates of overall land heating below the surface come from boreholes, made for other purposes. Here a

time series for land based on land surface air temperatures for a layer of 10 m is estimated. Highest value is in 2015 of 0.05 W m^{-2} (figure 4).

The situation is only slightly better for ice. Time series exist for sea ice area, and an estimate exists of Arctic sea ice volume (updated from Schweiger *et al* (2011)), while appraisals continue to be made of how much ice remains in glaciers. Maximum values for Arctic sea ice melt occur in 2008, 2011 and 2016 of 0.03 W m^{-2} . Estimates of changes in Greenland and Antarctica by different means exist but their uncertainties are large enough that error bars may not overlap (Trenberth 2022).

Modeling of the oceans has progressed, and the ocean observing system made major advances in the early 2000s with the deployment of the Argo array of over 3000 profiling floats that sample the upper 2000 m of the ocean for temperature and salinity. Estimates exist of OHC changes since 1958, the International Geophysical Year, although uncertainties are large prior to 2005. Two ocean OHC datasets have been used in figure 4. ORAS5 is constrained by altimetry observations of sea level and surface fluxes, but values are too high prior to 2008 when Argo reached full depth coverage and are less reliable after 2015 when it went operational. The IAP dataset has spurious variability related to sampling as it lacks the surface flux constraint. A preliminary newer ORAS construction (not shown) more closely matches IAP from 2006 to 2010.

In figure 4, the estimated inventory of the mean values for 2005–2019 are given. The ice time series is too small to be seen and the land values barely emerge in 2015 and 2019. Ideally, it should be possible to add up the contributions from all sources and they should agree with CERES. In figure 4 the agreement is reasonable from 2010 to 2016.

The ability to close the TOA energy budget beyond a long-term average is improving but remains a limitation on how well it is possible to analyze what is going on in the climate system and why. However, using physical constraints, regional energy balances and transports at 1000 km scales can be achieved (Trenberth and Zhang 2019). Desirably, all data should be assimilated into a comprehensive Earth system model and each component initialized, to provide the starting point for predictions, as done in NWP. Such experimental predictions for seasons in advance exist. The failure and indeed inability of models to match observations in the ocean, land and ice domains demonstrates their limitations, but short-term predictions are potentially a way forward to challenge and improve both models and observations.

It is vital to understand the net energy gain, and how much and where heat is redistributed within the Earth system. How much heat might be moved to where it can be purged from the Earth via radiation to limit warming? Utilizing the EEI framework, the relevant observations and their synthesis challenges models and highlights needed improvements, but with prospects for major payoffs from better information about what is going on, and why, and what the outlook is for the future.

Data availability statement

All data that support the findings of this study are included within the article (and any supplementary information files).

Acknowledgments

Many thanks to John Fasullo for processing the CERES EBAF data Ed4.1, available from <https://ceres.larc.nasa.gov/data/>. NCAR is sponsored by the U.S. National Science Foundation.

ORCID iDs

Kevin E Trenberth  <https://orcid.org/0000-0002-1445-1000>

Lijing Cheng  <https://orcid.org/0000-0002-9854-0392>

References

- Boening C, Willis J K, Landerer F W, Nerem R S and Fasullo J T 2012 The 2011 La Niña: so strong, the oceans fell *Geophys. Res. Lett.* **39** L19602
- Cheng L *et al* 2021 Upper ocean temperatures hit record high in 2020 *Adv. Atmos. Sci.* **38** 523–30
- Cheng L *et al* 2022 Another record: ocean warming continues through 2021 despite La Niña conditions *Adv. Atmos. Sci.* **39** 373–85
- Cheng L, Trenberth K E, Fasullo J, Abraham J, Boyer T P, von Schuckmann K and Zhu J 2018 Taking the pulse of the planet *Eos* **99** 14–16
- Coddington O, Lean J L, Pilewskie P, Snow M and Lindholm D 2016 A solar irradiance climate data record *Bull. Am. Meteorol. Soc.* **97** 1265–82
- Hansen J, Sato M, Kharecha P and von Schuckmann K 2011 Earth's energy imbalance and implications *Atmos. Chem. Phys.* **11** 13421–49
- Li G, Cheng L, Zhu J, Trenberth K E, Mann M E and Abraham J P 2020 Increasing ocean stratification over the past half century *Nat. Clim. Change* **10** 1116–23

- Loeb N G, Doelling D R, Wang H, Su W, Nguyen C, Corbett J G, Liang L, Mitrescu C, Rose F G and Kato S 2018 Clouds and the Earth's radiant energy system (CERES) energy balanced and filled (EBAF) top-of-atmosphere (TOA) edition-4.0 data product *J. Clim.* **31** 895–918
- Loeb N G, Johnson G C, Thorsen T J, Lyman J M, Rose F G and Kato S 2021 Satellite and ocean data reveal marked increase in Earth's heating rate *Geophys. Res. Lett.* **48** e2021GL093047
- NOAA 2022 *Weather Forecasting* (available at: www.noaa.gov/education/resource-collections/weather-atmosphere/weather-observations#:~:text=Each%20day%20in%20the%20United,thousands%20of%20trained%20volunteer%20observers)
- Schweiger A, Lindsay R, Zhang J, Steele M, Stern H and Kwok R 2011 Uncertainty in modeled arctic sea ice volume *J. Geophys. Res.* **116** C00D06
- Tanaka K R, van Houtan K S and deCastro M 2022 The recent normalization of historical marine heat extremes *PLoS Clim.* **1** e0000007
- Trenberth K E 2009 An imperative for climate change planning: tracking Earth's global energy *Curr. Opin. Environ. Sustain.* **1** 19–27
- Trenberth K E 2022 *The Changing Flow of Energy Through the Climate System* (Cambridge: Cambridge University Press) p 319
- Trenberth K E, Cheng L, Jacobs P, Zhang Y and Fasullo J 2018 Hurricane Harvey links to ocean heat content *Earths Future* **6** 730–44
- Trenberth K E and Fasullo J T 2013 An apparent hiatus in global warming? *Earths Future* **1** 19–32
- Trenberth K E, Fasullo J T and Kiehl J 2009 Earth's global energy budget *Bull. Am. Meteorol. Soc.* **90** 311–24
- Trenberth K E and Zhang Y 2019 Observed inter-hemispheric meridional heat transports and the role of the Indonesian throughflow in the Pacific Ocean *J. Clim.* **32** 8523–36
- von Schuckmann K *et al* 2016 Earth's energy imbalance: an imperative for monitoring *Nat. Clim. Change* **6** 138–44