

OPEN ACCESS

Antiproton beams with low energy spread for antihydrogen production

To cite this article: M. Tajima *et al* 2019 *JINST* **14** P05009

View the [article online](#) for updates and enhancements.

You may also like

- [Probability distributions of Hamiltonian changes in linear magnetic systems under discontinuous perturbations](#)
Humberto Híjar, Jacqueline Quintana-H and Godehard Sutmann
- [Computation of dynamical correlation functions of the spin-1 Babujian–Takhtajan chain](#)
Rogier Vlijm and Jean-Sébastien Caux
- [Correlations and sum rules in a half-space for a quantum two-dimensional one-component plasma](#)
B Jancovici and L Šamaj



ECS
The
Electrochemical
Society
Advancing solid state &
electrochemical science & technology

DISCOVER
how sustainability
intersects with
electrochemistry & solid
state science research

Antiproton beams with low energy spread for antihydrogen production

M. Tajima,^{a,b,1} N. Kuroda,^a C. Amsler,^c H. Breuker,^b C. Evans,^d M. Fleck,^{c,2} A. Gligorova,^c H. Higaki,^e Y. Kanai,^f B. Kolbinger,^c A. Lanz,^c M. Leali,^{d,g} V. Mäkel,^{c,3} C. Malbrunot,^h V. Mascagna,^{g,i} Y. Matsuda,^a D. Murtagh,^c Y. Nagata,^j A. Nanda,^c B. Radics,^{b,4} M. Simon,^c S. Ulmer,^b L. Venturelli,^{d,g} E. Widmann,^c M. Wiesinger^{c,5} and Y. Yamazaki^b

^a*Institute of Physics, University of Tokyo,
3-8-1 Komaba, Meguro, 153-8902 Tokyo, Japan*

^b*Ulmer Fundamental Symmetries Laboratory, RIKEN,
2-1 Hirosawa, Wako, 351-0198 Saitama, Japan*

^c*Stefan Meyer Institute of the Austrian Academy of Sciences,
Boltzmannsgasse 3, 1090 Vienna, Austria*

^d*Department of Information Engineering, University of Brescia,
Via Branze 38, 25123 Brescia, Italy*

^e*Graduate School of Advanced Sciences of Matter, Hiroshima University,
1-3-2 Kagamiyama, Higashi-Hiroshima, 739-8530 Hiroshima, Japan*

^f*RIKEN Nishina Center for Accelerator-Based Science,
2-1 Hirosawa, Wako, 351-0198 Saitama, Japan*

^g*National Institute for Nuclear Physics, Sezione di Pavia,
Via Bassi 6, 27100 Pavia, Italy*

^h*Experimental Physics Department, CERN,
1211 Geneva 23, Switzerland*

ⁱ*Department of Science and High Technology, University of Insubria,
Via Valleggio 11, 22100 Como, Italy*

^j*Department of Physics, Tokyo University of Science,
1-3 Kagurazaka, Shinjuku, 162-8601 Tokyo, Japan*

E-mail: mtajima@riken.jp

¹Corresponding author. Present address: RIKEN Nishina Center for Accelerator-Based Science.

²Present address: Institute of Physics, University of Tokyo

³Present address: Ulmer Fundamental Symmetries Laboratory, RIKEN.

⁴Present address: Institute for Particle Physics and Astrophysics, ETH Zurich, CH-8093 Zurich, Switzerland.

⁵Present address: Max Planck Institute for Nuclear Physics, D-69117 Heidelberg, Germany and Ulmer Fundamental Symmetries Laboratory, RIKEN.

ABSTRACT: A low energy antiproton transport from the ASACUSA's antiproton accumulation trap (MUSASHI trap) to the antihydrogen production trap (double cusp trap) is developed. The longitudinal antiproton energy spread after the transport line is 0.23 ± 0.02 eV, compared with 15 eV with a previous method used in 2012. This reduction is achieved by an adiabatic transport beamline with several pulse-driven coaxial coils. Antihydrogen atoms are synthesized by directly injecting the antiprotons into a positron plasma, resulting in the higher production rate.

KEYWORDS: Beam Optics; Instrumentation for radioactive beams (fragmentation devices; fragment and isotope, separators incl. ISOL; isobar separators; ion and atom traps; weak-beam diagnostics; radioactive-beam ion sources); Plasma diagnostics - charged-particle spectroscopy

Contents

1	Introduction	1
2	Experimental setup	2
3	Antiproton energy distribution	4
4	$\bar{\text{H}}$ production rate	7
5	Conclusion	9

1 Introduction

Antihydrogen ($\bar{\text{H}}$) with 11 candidates at 1.9 GeV/c was first reported at CERN's Low Energy Antiproton Ring (LEAR) in 1996 [1]. The first detection of cold $\bar{\text{H}}$ by mixing trapped antiprotons ($\bar{\text{p}}$ s) with positrons (e^+ s) was reported in 2002 [2, 3] soon followed by the first magnetic trapping of $\bar{\text{H}}$ in 2010 [4].

Measuring atomic transitions in $\bar{\text{H}}$ with high precision will be one of the most precise tests of the CPT symmetry between matter and antimatter. A microwave spectroscopy experiment has recently measured the ground-state hyperfine splitting of trapped $\bar{\text{H}}$ with a relative precision of 4×10^{-4} [5]. The ASACUSA collaboration intends to perform a Rabi-type experiment to measure the ground-state hyperfine splitting of $\bar{\text{H}}$ using instead a spin-polarized $\bar{\text{H}}$ beam [6]. Measurements of the hyperfine splitting with a beam are less sensitive to magnetic field gradients to which hyperfine transitions are quite sensitive.

The ASACUSA $\bar{\text{H}}$ beam is extracted from a cusped magnetic field which is generated by a pair of superconducting anti-Helmholtz coils [6–8]. A Rabi-type spectroscopy apparatus was designed to achieve a relative precision in the measurement of the ground-state hyperfine splitting of $\bar{\text{H}}$ of less than a ppm. The spectroscopy in a Rabi-type hydrogen beam was demonstrated and a relative precision of 2.7×10^{-9} was achieved [9].

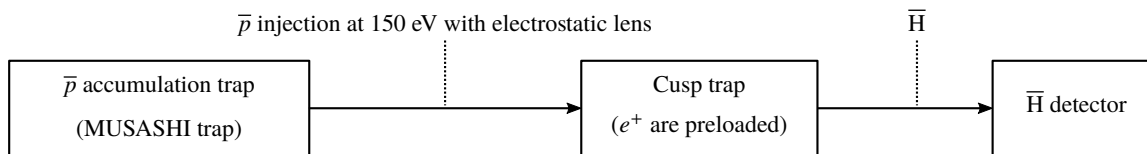


Figure 1. Diagram of the direct injection method used in 2012.

We have produced earlier $\bar{\text{H}}$ atoms in the cusp trap (composed of Multi-ring electrodes (MRE) in the cusp magnetic field) by directly injecting $\bar{\text{p}}$ s into a pre-loaded e^+ plasma, following the

so-called direct injection method [10] shown in figure 1. The \bar{p} s were transported towards the cusp trap at 150 eV with an electrostatic focusing lens system from the \bar{p} accumulation trap (MUSASHI trap [11]). With this method, the ASACUSA-Cusp collaboration succeeded in 2012 in detecting 80 \bar{H} atoms at the \bar{H} detector [6]. Although it was the first demonstration of \bar{H} atoms detected downstream of their formation region, the rate was too small for the envisioned spectroscopy measurements initially with a precision of 1 ppm requiring about 4000 \bar{H} . One of the limiting factor was the longitudinal energy spread of the injected \bar{p} which was measured to be $\sigma \sim 15$ eV, assuming a Gaussian distribution [12]. With the direct injection method, the kinetic energy of the injected \bar{p} s is adjusted to maximize the number of \bar{p} s in the cusp trap and to minimize the relative energy of \bar{p} with respect to the pre-loaded e^+ plasma. The relative longitudinal energy could not be smaller than 15 eV of the energy spread of injected \bar{p} , whereas the temperature of the e^+ s was estimated to be about 0.02 eV (200 K) [13]. Hence the large relative energy caused heating of the e^+ plasma, which decreased the \bar{H} production rate because the rate strongly depends on the e^+ plasma temperature [14]. With a low energy spread, a smaller relative energy would lead to a higher \bar{H} production rate. Therefore a new \bar{p} transport system was designed to reduce the longitudinal energy spread [12]. This paper describes a further development for \bar{p} injection at 1.5 eV, which led to an observed energy distributions with energy spread $\sigma = 0.23 \pm 0.02$ eV and resulted in the two orders of magnitude higher \bar{H} production rate.

2 Experimental setup

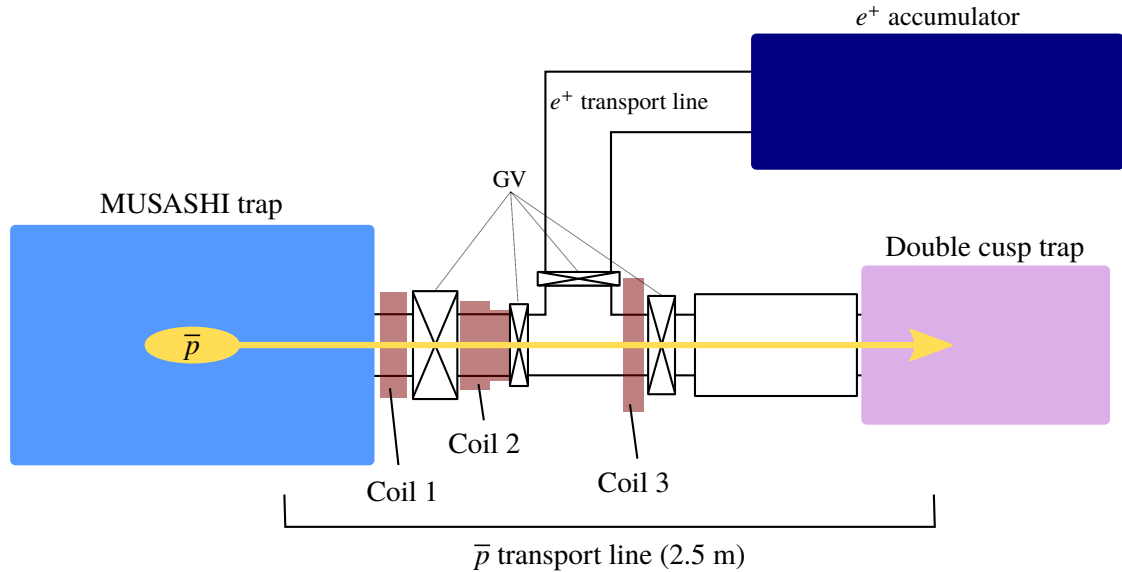


Figure 2. Sketch of the experimental setup (not to scale).

Figure 2 shows a sketch of the apparatus, including the MUSASHI trap, the \bar{p} transport line, the e^+ accumulator, the e^+ transport line, and the \bar{H} production trap (double cusp trap). The magnetic field of the double cusp trap is generated by two pairs of superconducting anti-Helmholtz coils. Both MUSASHI trap and double cusp trap are of the Penning-Malmberg-type, which confines charged

particles by static electromagnetic fields. Electric fields are produced by the MRE for both traps. The MRE are designed for the stable confinement of a non-neutral plasma [15].

A bunch of $3 \times 10^7 \bar{p}$ s at 5.3 MeV is supplied every 2 min by the Antiproton Decelerator (AD) at CERN. The \bar{p} s are decelerated to 100 keV by a radio frequency quadrupole decelerator (RFQD) [16], and injected into the MUSASHI trap after further deceleration down to 10 keV by a thin foil. They are first cooled through collisions with pre-loaded electrons ($\sim 10^8$), and then radially compressed by applying a rotating-wall electric field (typically 247 kHz, 2 V peak to peak during 120 s) with fewer ($\sim 10^5$) electrons [17]. A cloud of $2 \times 10^6 \bar{p}$ s per 3 AD shots is typically prepared in the MUSASHI trap.

Figure 3 shows the electric field manipulations to extract the \bar{p} cloud from the MUSASHI trap towards the \bar{p} transport line. The MUSASHI MRE are floated at -1.5 V (hereinafter referred to as $V_f = 1.5$ V), which corresponds to an ultra-slow beam extraction energy of 1.5 eV. The solid line shows the electrostatic potential configuration before extraction. A pulsed voltage is applied to remove the potential barrier at the downstream side. The dashed line shows the potential configuration at the moment of extraction. It is designed to minimize the potential gradient in the \bar{p} region, and optimized experimentally to maximize the trapping efficiency in the double cusp trap.

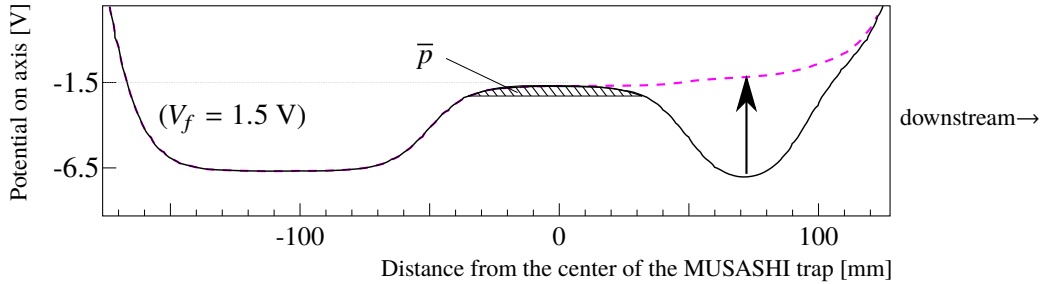


Figure 3. Electrostatic potential manipulations on the MUSASHI trap axis for \bar{p} extraction. The solid and dashed lines show the configurations before and during \bar{p} extraction. The hatched region corresponds to the \bar{p} cloud. A pulsed voltage (rise time 50 ns, amplitude 5 V) is applied (arrow) to remove the potential barrier on the downstream side.

The \bar{p} beamline with three transport coils is designed so that \bar{p} s adiabatically follow the magnetic field lines. Figure 4 (a) shows a sketch of the setup along the transport line, and figure 4 (b) shows simulation results of the \bar{p} trajectories along the transport line. Commercially available software (Tricomp by Field Precision LLC) is used for the simulation. Firstly, the cylindrical electrostatic and magnetostatic fields is calculated using a finite element method and then the \bar{p} trajectory in the static fields is simulated. The initial kinetic energy of each \bar{p} is set to 1.5 eV. The trajectories with initial radial positions of 0.4, 0.8, 1.2, 1.6, and 2.0 mm are shown. Coil 1 is located next to the MUSASHI trap to suppress the radial expansion of the \bar{p} cloud due to the drastic divergence of the magnetic field lines at the exit of the MUSASHI trap. In order to achieve the required magnetic field strength for the adiabatic transport, large currents have to be applied to the three transport coils. Therefore they are energized by pulsed currents with time widths of about 50 ms to suppress Joule heating. Table 1 shows specifications of the three coils. Figure 5 shows the axial magnetic field B_z on the axis of each transport coil as a function of time, estimated from the monitored currents when the coils are energized. Since the time of flight of the \bar{p} s along the transport line is of the order of μ s, the magnetic field can be considered constant during \bar{p} transport.

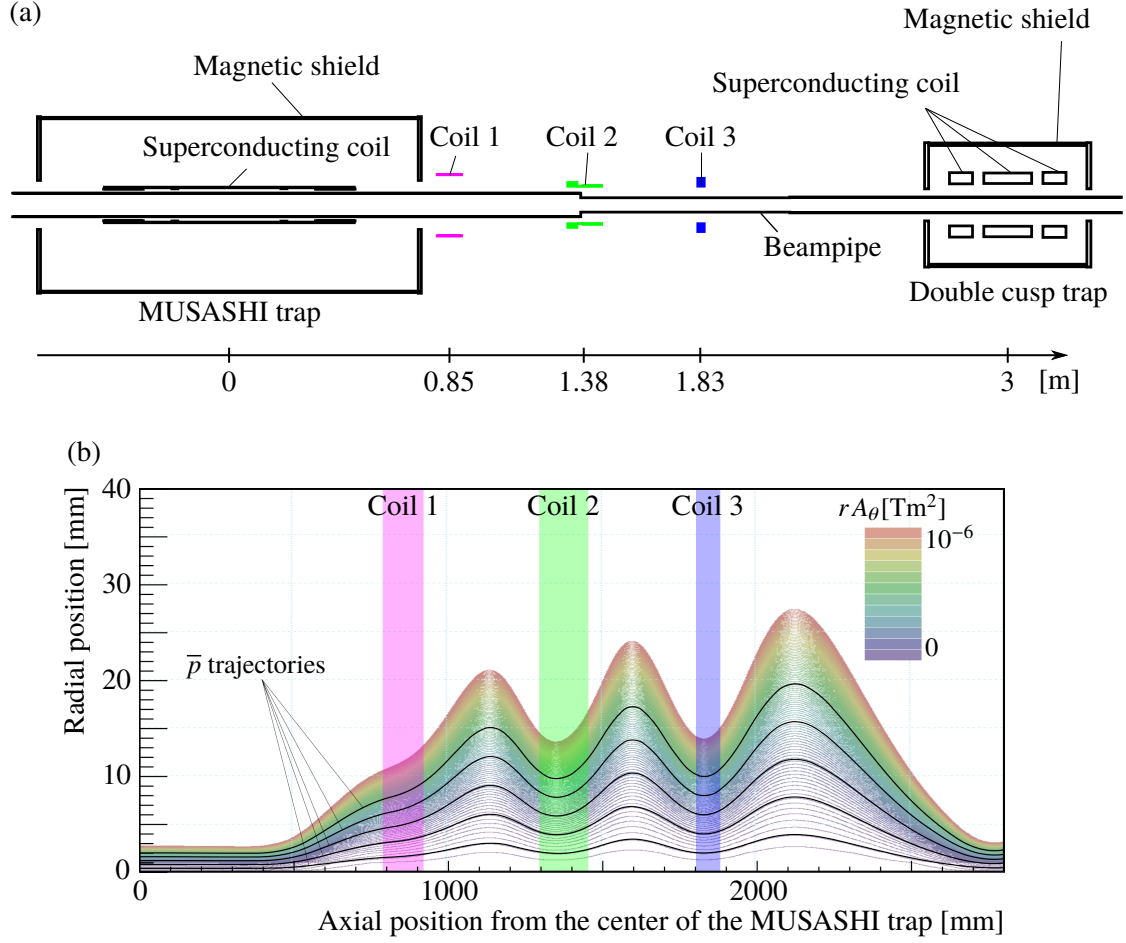


Figure 4. (a) Schematic view of the \bar{p} transport line. (b) Simulation results for \bar{p} trajectories along the transport line (black solid curves). The initial radial positions are 0.4, 0.8, 1.2, 1.6, and 2.0 mm. The initial kinetic energy of the \bar{p} s is 1.5 eV. The colored stripes correspond to the locations of the three transport coils. The extraction process in the MUSASHI trap is not included in this simulations. The magnetic field lines lie along the contour lines of rA_θ where A_θ is a non-zero component of the vector potential.

Name	Inner diameter [mm]	Outer diameter [mm]	Axial length [mm]	Turns	Resistance [Ω]	Inductance [mH]	Maximum B_z on axis [T]
Coil 1	400	408	96	48	0.13	1.35	0.15
Coil 2	250	306	115	150	0.41	5.06	0.12
Coil 3	250	360	30	147	0.44	10.2	0.12

Table 1. Parameters of the three transport coils (design values). The effective resistance can be larger by 30-50% due to the skin effect.

3 Antiproton energy distribution

The energy distribution of the \bar{p} s is measured by using retarding potentials at the exit of the MUSASHI trap and at the entrance of the double cusp trap. Figure 6 (a) shows the potential

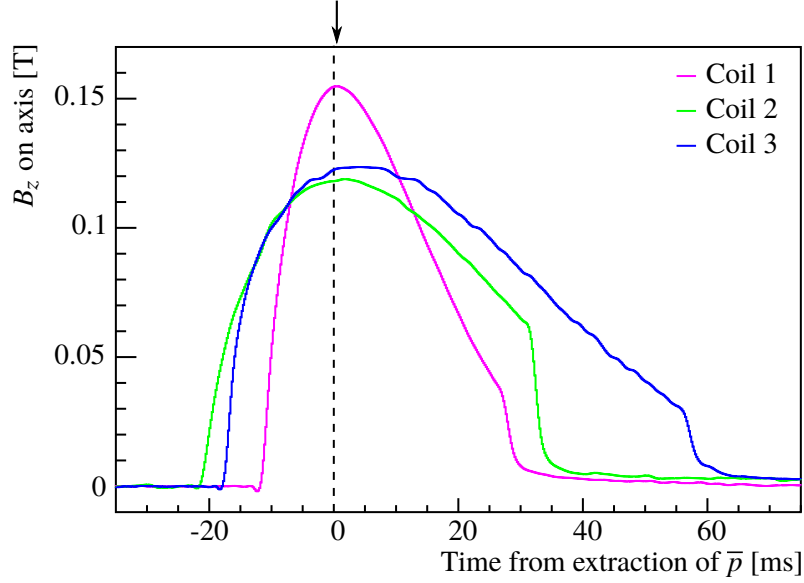


Figure 5. Axial magnetic field strength B_z on axis of the three transport coils as a function of \bar{p} extraction time. \bar{p} s reach the double cusp at $150 \mu\text{s}$ (arrow).

distribution on the axis at the exit of the MUSASHI trap. Additional cylindrical electrodes separated from the MUSASHI MRE, located 650 mm downstream of the center of the MUSASHI trap, are used to generate the retarding potential barrier. A gate valve located 1.9 m downstream is closed during the measurement. The \bar{p} s are extracted from the MUSASHI MRE towards the potential barrier and the transmitted particles annihilate on the surface of the closed gate valve. Charged annihilation particles (mainly 3 charged pions on average) are detected as a pulsed current by a 2 cm-thick plastic scintillator equipped with a photomultiplier (H7195). When the \bar{p} s are released, the longitudinal energy distribution is given by the detected charge, which is proportional to the number of extracted \bar{p} s (within 10%) as a function of the retarding potential on the beam axis (V_r).

Figure 6 (b) shows the potential distribution for the measurement of the energy distribution at the entrance of the double cusp trap. Firstly, an electrostatic potential well is prepared in the double cusp trap. The \bar{p} s are then transported from the MUSASHI trap and injected into the double cusp trap. The solid line shows the configuration at \bar{p} injection. The upstream side of the potential well is closed (dotted line) after a given time (hereinafter referred to as catching time), which has been optimized to trap as many \bar{p} s as possible. Finally, the trapped \bar{p} s in the potential well are slowly released to annihilate on the surface of surrounding materials. The annihilations are detected by 8 plastic scintillator bars surrounding the vacuum pipe of the double cusp trap [18].

The measurements are repeated with different retarding potentials. At each trial, the number of confined \bar{p} s in the MUSASHI trap is monitored separately on the upstream side, to which the annihilation signals are normalized. Figure 7 (a) and (b) show the results obtained at the MUSASHI trap exit and at the double cusp trap entrance, together with fits $F(V_r)$ given by

$$F(V_r) = \frac{C}{2} \left(1 + \operatorname{erf} \left[\frac{V_r - \mu}{\sqrt{2}\sigma} \right] \right), \quad (3.1)$$

which is a cumulative distribution function of a Gaussian distribution with mean μ , standard

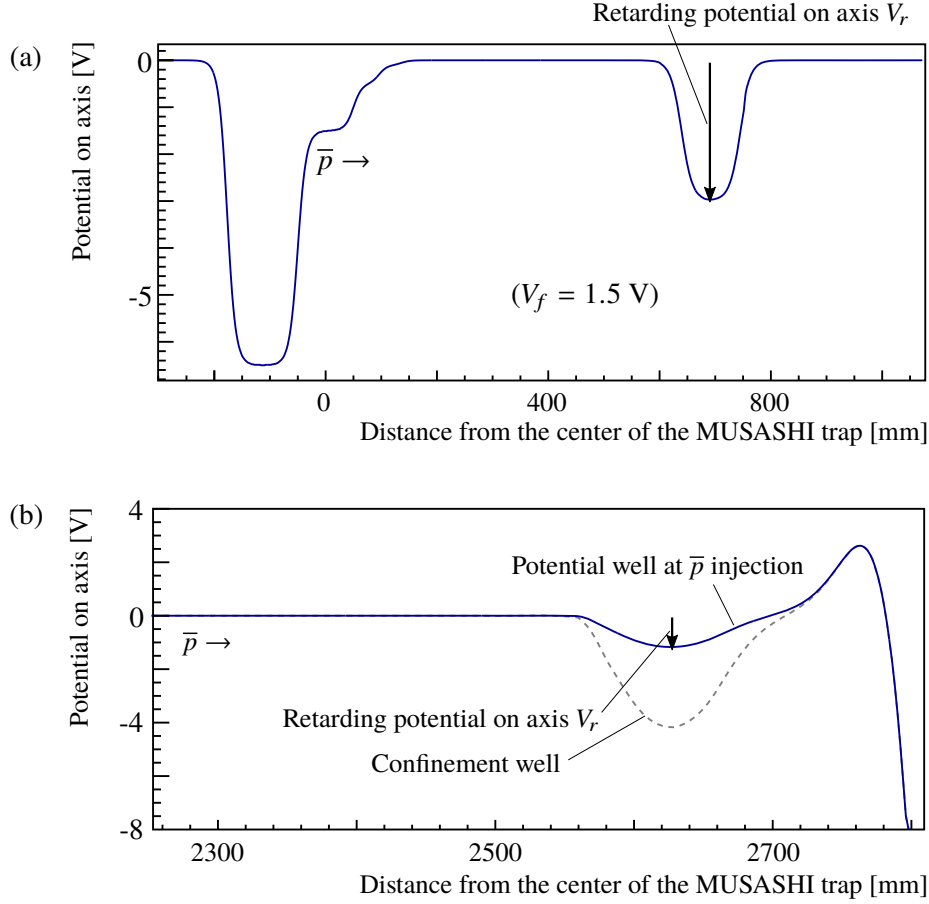


Figure 6. Electrostatic potentials on axis for the measurement of the energy distribution of \bar{p} s at the MUSASHI trap (a) and the double cusp trap (b).

deviation σ , and normalization constant C . We also show the distribution for $V_f = 20$ V, comparable to the one reported in [12]. Table 2 shows the standard deviation σ , a measure of the longitudinal energy spread.

The longitudinal energy spread at the exit of the MUSASHI trap is consistent for both $V_f = 1.5$ V and $V_f = 20$ V. At the entrance of the double cusp trap, the longitudinal energy spread is broader for $V_f = 20$ V. This can be qualitatively explained by the fact that the transport condition deviates from adiabatic condition as \bar{p} s travel faster. In other words, \bar{p} s are not slow enough compared to the change of magnetic field strength along their trajectories and the longitudinal energy spread does not conserve. With $V_f = 1.5$ V, the energy spread of 0.23 ± 0.02 eV is about two orders of magnitude smaller than 15 eV, obtained by using our previous transport scheme in 2012 [12]. The energy spread at the double cusp trap entrance for $V_f = 1.5$ V is smaller than the value at the MUSASHI trap exit, which can be explained by the loss of fast particles during catching, mainly those which have a shorter travelling time in the double cusp trap. The number of trapped \bar{p} s per 3 AD shots is typically 6×10^5 out of 2×10^6 confined in the MUSASHI trap. Considering the radius and bunch length of the antiproton cloud, the time constant of the relaxation between transverse and longitudinal momentum due to collisions is much longer than the time of flight of antiprotons.

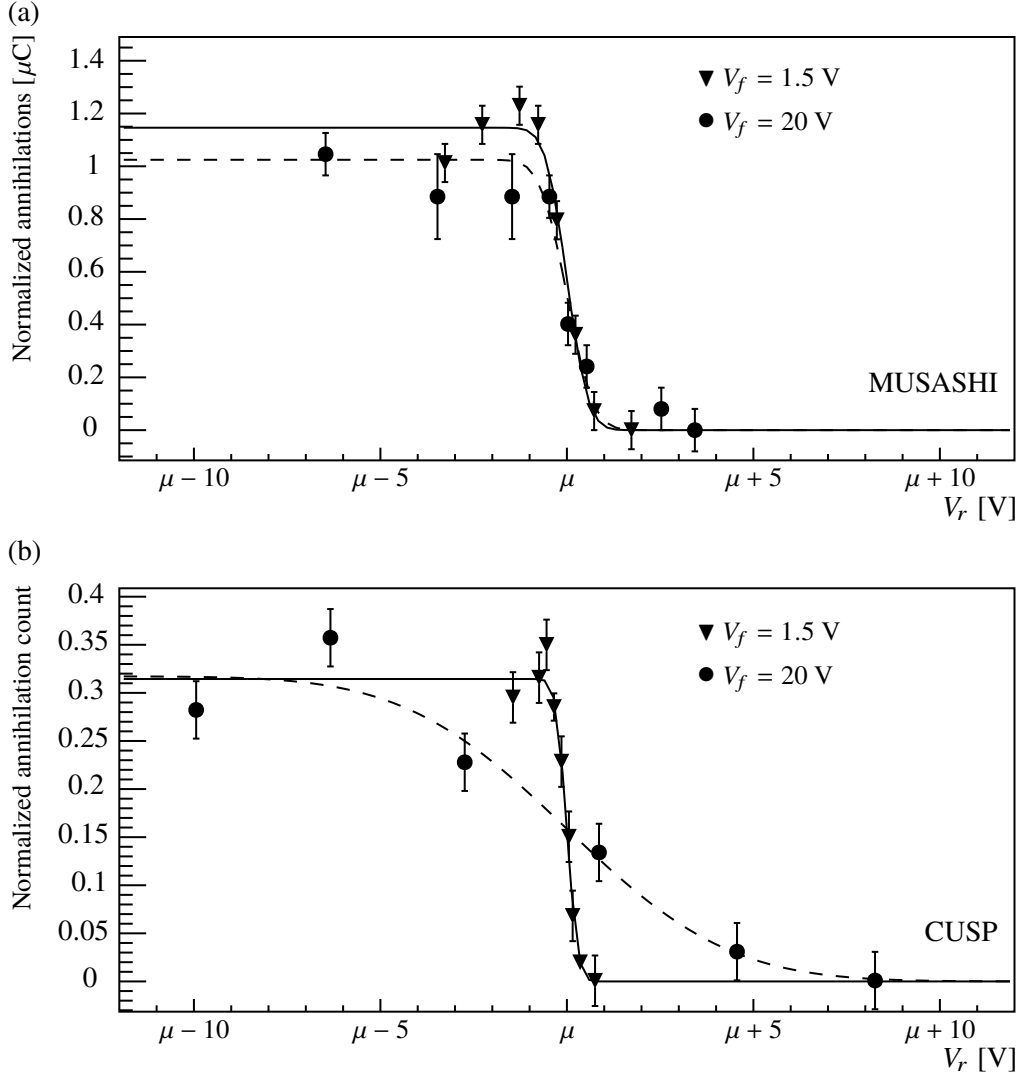


Figure 7. Longitudinal energy distributions of the \bar{p} s at the exit of the MUSASHI trap (a) and at the entrance of the double cusp trap (b), for two different float voltages V_f . The curves are fits using (3.1). The axial magnetic field strength is 0.3 T and 0.6 T, respectively.

Initial float voltage V_f [V]	Energy spread σ [eV]	
	at the exit of the MUSASHI trap	at the entrance of the double cusp trap
1.5	0.45 ± 0.08	0.23 ± 0.02
20	0.6 ± 0.1	3.4 ± 0.8

Table 2. Longitudinal energy spread expressed as the standard deviation σ in (3.1).

4 \bar{H} production rate

\bar{H} atoms are produced with the direct injection method by using the \bar{p} beam with reduced energy spread of 0.23 ± 0.02 eV. Typically, a cloud of 6.0×10^5 \bar{p} s with a radius of 2 mm are injected into

a plasma of $1.2 \times 10^8 e^+$ s with the density of $6.0 \times 10^8 \text{ cm}^{-3}$ and a radius of 1 mm. The number of $\bar{\text{H}}$ atoms formed is estimated using the field ionization (FI) technique [3] inside the double cusp trap. Figure 8 shows the electrostatic potential on axis for $\bar{\text{H}}$ production. The upstream nested well confines the positively charged pre-loaded e^+ plasma at the center and the negatively charged \bar{p} cloud. A steep potential well (FI) with a strong electrostatic field is used to field-ionize the $\bar{\text{H}}$ atoms in the double cusp trap. Rydberg $\bar{\text{H}}$ atoms ($n \geq 40$) reaching the FI well are ionized by the strong field thus confining the remaining \bar{p} inside the FI well. When the confined \bar{p} s in the FI well are released, they annihilate on the surrounding materials and the emitted charged annihilation particles are detected by plastic scintillators. The solid angle of the FI well from the center of the nested well is around 1%. The time evolution of $\bar{\text{H}}$ production could be studied by periodically releasing the trapped \bar{p} s in the FI well [10].

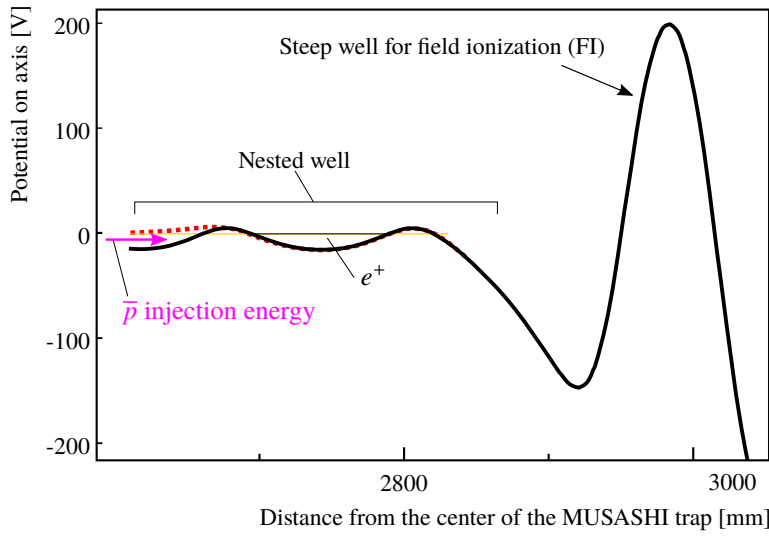


Figure 8. Electrostatic potential on axis inside the double cusp trap for $\bar{\text{H}}$ production. The nested well at the upstream side confines both e^+ s and \bar{p} s. The steep well at the downstream side is for field ionizing $\bar{\text{H}}$ atoms. The dotted and solid lines show the configurations before and after \bar{p} injection, respectively.

Figure 9 shows the observed time evolution for $\bar{\text{H}}$ production. The squares show the previous result in 2012 as reference [6]. The average number of field ionized $\bar{\text{H}}$ atoms is 6 during the first 5 s of mixing. The circles show the result using the \bar{p} s with reduced energy spread. The number of field ionized $\bar{\text{H}}$ atoms increases to 260 during the first 4 s. In fact, the highest rate reached already $208 \pm 7 \text{ s}^{-1}$ during the first 0.7 s. This indicates a weaker heating of e^+ s by the injected \bar{p} s with reduced energy spread. The higher production rate increases the signal/background ratio at the downstream $\bar{\text{H}}$ detector (background events at the detector are essentially due to cosmic rays [19]). Note that it is unlikely that the increase in FI atoms is due to the production of higher Rydberg states, since the lower the e^+ temperature, the lower the produced Rydberg states [20]. The principal quantum number n distribution is measured with the $\bar{\text{H}}$ atoms extracted downstream of the double cusp trap. Among 43 mixing runs, 7 $\bar{\text{H}}$ events with $n < 14$ are recorded, as declared in [21]. If the on-axis axial velocity is small (less than roughly 1300 ms^{-1}), those $\bar{\text{H}}$ atoms would have been in ground-state when reaching the detector.

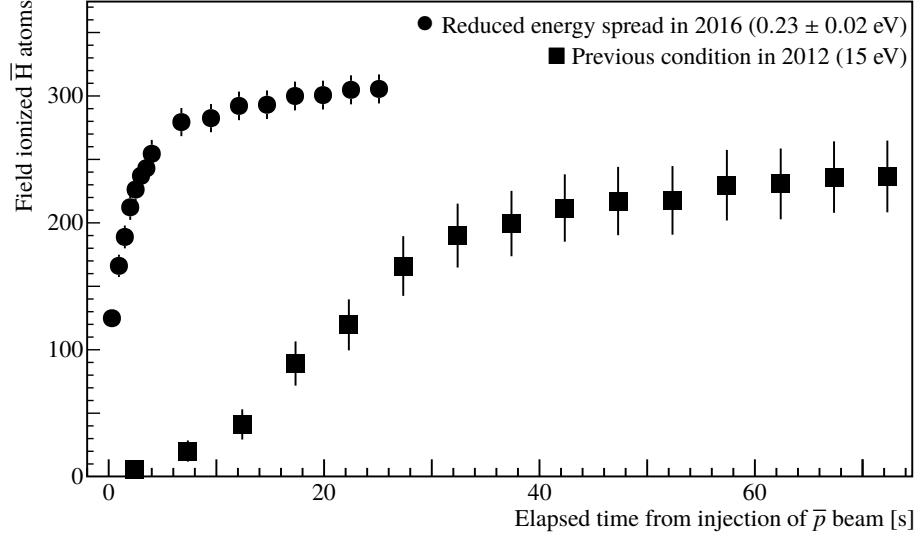


Figure 9. Time evolution of the number of field ionized $\bar{\text{H}}$ atoms for two different conditions (cumulative plot). The number of \bar{p} s confined in the nested well for $\bar{\text{H}}$ production is 3×10^5 for both cases.

5 Conclusion

A low energy \bar{p} transport method from the MUSASHI trap to the double cusp trap is developed. With the adiabatic transport beamline containing several pulse-driven coaxial coils, the longitudinal energy spread of \bar{p} s is reduced to 0.23 ± 0.02 eV, compared with 15 eV obtained earlier. This results in a two orders of magnitude higher $\bar{\text{H}}$ production rate.

Acknowledgments

This work was supported by the Grant-in-Aid for Specially Promoted Research 24000008 of Japanese MEXT, Special Research Projects for Basic Science of RIKEN, European Research Council under European Union’s Seventh Framework Programme (FP7/2007-2013) /ERC Grant Agreement (291242), the Austrian Ministry of Science and Research, Austrian Science Fund (FWF): W1252-N27, and Università di Brescia and Istituto Nazionale di Fisica Nucleare. MT was supported by the Junior Research Associate program of RIKEN.

References

- [1] G. Baur et al., *Production of anti-hydrogen*, *Phys. Lett. B* **368** (1996) 251.
- [2] M. Amoretti et al., *Production and detection of cold anti-hydrogen atoms*, *Nature* **419** (2002) 456.
- [3] G. Gabrielse et al., *Background-Free Observation of Cold Antihydrogen with Field-Ionization Analysis of Its States*, *Phys. Rev. Lett.* **89** (2002) 213401.
- [4] G.B. Andresen et al., *Trapped antihydrogen*, *Nature* **468** (2010) 673.
- [5] M. Ahmadi et al., *Observation of the hyperfine spectrum of antihydrogen*, *Nature* **548** (2017) 66 [Erratum *ibid.* **553** (530)].

- [6] N. Kuroda, S. Ulmer, D. J. Murtagh, S. V. Gorp, Y. Nagata, M. Diermaier et al., *A source of antihydrogen for in-flight hyperfine spectroscopy*, *Nat. Commun.* **5** (2014) 3089.
- [7] A. Mohri and Y. Yamazaki, *A possible new scheme to synthesize antihydrogen and to prepare a polarised antihydrogen beam*, *Europhys. Lett.* **63** (2003) 207.
- [8] Y. Nagata and Y. Yamazaki, *A novel property of anti-Helmholz coils for in-coil syntheses of antihydrogen atoms: formation of a focused spin-polarized beam*, *New J. Phys.* **16** (2014) 083026.
- [9] M. Diermaier, C.B. Jepsen, B. Kolbinger, C. Malbrunot, O. Massiczek, C. Sauerzopf et al., *In-beam measurement of the hydrogen hyperfine splitting and prospects for antihydrogen spectroscopy*, *Nat. Commun.* **8** (2017) 15749.
- [10] Y. Enomoto et al., *Synthesis of Cold Antihydrogen in a Cusp Trap*, *Phys. Rev. Lett.* **105** (2010) 243401.
- [11] N. Kuroda et al., *Development of a monoenergetic ultraslow antiproton beam source for high-precision investigation*, *Phys. Rev. ST Accel. Beams* **15** (2012) 024702.
- [12] M. Tajima et al., *Manipulation and transport of antiprotons for an efficient production of antihydrogen atoms*, *JPS Conf. Proc.* **18** (2017) 011008.
- [13] Y. Enomoto, *Antihydrogen production in CUSP trap*, Ph.D. Thesis (2011).
- [14] G. Gabrielse, S. L. Rolston, L. Haarsma and W. Kells, *Possible antihydrogen production using trapped plasmas*, *Hyperfine Interactions* **44** (1989) 287.
- [15] A. Mohri, H. Higaki, H. Tanaka, Y. Yamazawa, M. Aoyagi, T. Yuyama et al., *Confinement of nonneutral spheroidal plasmas in multi-ring electrode traps*, *Jpn. J. Appl. Phys.* **37** (1998) 664.
- [16] Y. Bylinsky, A.M. Lombardi and W. Pirkel, *RFQD: A ‘Decelerating’ radio frequency quadrupole for the CERN anti-proton facility*, in *Proceedings of the 20th International Conference*, Monterey, U.S.A., 21–25 August 2000, pp. 554–556 [[arXiv:hep-ex/0008030](#)].
- [17] N. Kuroda et al., *Radial Compression of an Antiproton Cloud for Production of Intense Antiproton Beams*, *Phys. Rev. Lett.* **100** (2008) 203402.
- [18] B. Radics et al., *The ASACUSA MicrOMEGAs Tracker: A cylindrical, bulk MicrOMEGAs detector for antimatter research*, *Rev. Sci. Instrum.* **86** (2015) 083304.
- [19] Y. Nagata et al., *Monte-Carlo based performance assessment of ASACUSA’s antihydrogen detector*, *Nucl. Instrum. Meth. A* **910** (2018) 90 [[arXiv:1806.00959](#)].
- [20] B. Radics, D.J. Murtagh, Y. Yamazaki and F. Robicheaux, *Scaling behavior of the ground-state antihydrogen yield as a function of positron density and temperature from classical-trajectory Monte Carlo simulations*, *Phys. Rev. A* **90** (2014) 032704.
- [21] C. Malbrunot, C. Amsler, S. A. Cuendis, H. Breuker, P. Dupre, M. Fleck et al., *The ASACUSA antihydrogen and hydrogen program: results and prospects*, *Philos. Trans. | Royal Soc. A* **376** (2018) 20170273.