

PAPER

Determination of the light exposure on the photodiodes of a new instrumented baffle for the Virgo input mode cleaner end-mirror




To cite this article: A Romero-Rodríguez *et al* 2021 *Class. Quantum Grav.* **38** 045002

View the [article online](#) for updates and enhancements.

You may also like

- [The Holometer: an instrument to probe Planckian quantum geometry](#)
Aaron Chou, Henry Glass, H Richard Gustafson et al.
- [A dynamic ultrasonic emitter inspired by horseshoe bat noseleaves](#)
Yanqing Fu, Philip Caspers and Rolf Müller
- [Power exhaust and core-divertor compatibility of the baffled snowflake divertor in TCV](#)
S Gorno, C Colandrea, O Février et al.

Determination of the light exposure on the photodiodes of a new instrumented baffle for the Virgo input mode cleaner end-mirror

A Romero-Rodríguez^{1,*} , A Allocca² , A Chiummo³,
M Martínez^{1,4} , LI M Mir¹  and H Yamamoto⁵

¹ Institut de Física d'Altes Energies (IFAE), Barcelona Institute of Science and Technology, Barcelona, Spain

² Università di Napoli 'Federico II', Dipartimento di Fisica 'Ettore Pancini', Complesso Universitario Monte S Angelo, Napoli, Italy

³ European Gravitational Observatory (EGO), Cascina, Pisa, Italy

⁴ Institució Catalana de Recerca i Estudis Avançats (ICREA), Barcelona, Spain

⁵ LIGO laboratory, California Institute of Technology (Caltech), Pasadena, CA, United States of America

E-mail: aromero@ifae.es

Received 1 September 2020, revised 26 November 2020

Accepted for publication 27 November 2020

Published 24 December 2020



Abstract

As part of the upgrade program of the advanced Virgo interferometer, the installation of new instrumented baffles surrounding the main test masses is foreseen. As a demonstrator, and to validate the technology, the existing baffle in the area of the input mode cleaner end-mirror will be first replaced by a baffle equipped with photodiodes. This paper presents detailed simulations of the light distribution on the input mode cleaner baffle. They served to validate the proposed layout of the sensors in the baffle, and determine the light exposure of the photodiodes under different scenarios of the interferometer operations, in order to define mitigation strategies for preserving the detector integrity.

Keywords: gravitational waves, virgo, instrumentation, baffle, input mode cleaner, simulations, stray light

(Some figures may appear in colour only in the online journal)

1. Introduction

Advanced Virgo is a power-recycled Michelson interferometer with 3 km long Fabry–Perot cavities in the two orthogonal arms [1]. Its next upgrade, named advanced Virgo plus (AdV+),

* Author to whom any correspondence should be addressed.

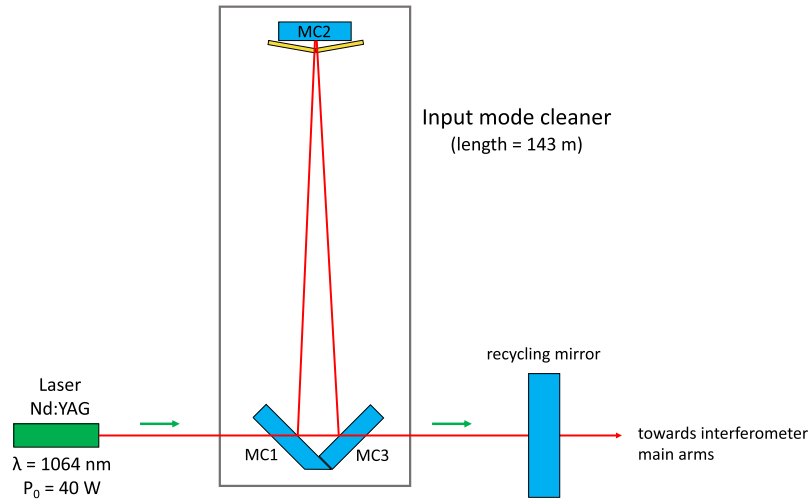


Figure 1. Sketch of the IMC cavity geometry. The instrumented baffle will be placed around the end-mirror (MC2). The yellow rectangles illustrate the position of the baffle.

will occur in two phases. The first phase, or phase I, is currently taking place between the O3 and O4 observation runs, while phase II will take place between the O4 and O5 observation runs [2]. Among several other improvements, AdV+/phase II foresees the installation of baffles instrumented with photosensors surrounding the main test masses. The information provided by these photosensors will improve the understanding of the stray light (SL) distribution at low angles in the interferometer, detect the appearance of excited higher order modes which show up as modified patterns in the SL detected by the baffles, open the possibility of monitoring the contamination of the mirror surfaces that leads to low-angle scattering, and facilitate a more efficient pre-alignment and fine-tuning of the parameters of the interferometer after shutdowns and during operations.

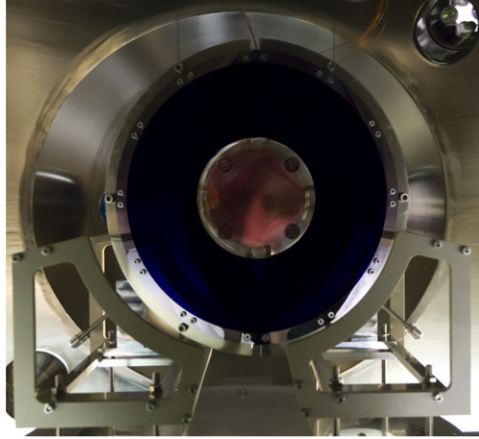
The current LIGO [3] and KAGRA [4] interferometers have photodiodes (PDs) embedded in the baffles around the test masses to ease the pre-alignment of the beam along the long arms. These sensors also provide information on the amount of low-angle scattered light, but there are too few to supply its full distribution. On the other hand, the Virgo baffles around the tests masses are only equipped with aluminum targets to monitor the light scattered off of them.

As part of the phase I upgrade, the replacement of the input mode cleaner (IMC) end-mirror and payload is being planned. This motivated the replacement of the current baffle by a new one instrumented with PDs, acting as a demonstrator of the selected technology. It will also serve to gain experience on operating such a new device within Virgo.

The IMC cavity is an in-vacuum triangular cavity with suspended optics, used for modal and frequency filtering of the laser beam before entering the interferometer. Figure 1 shows a schematic optical setup of the IMC, where MC2 is the end-mirror and MC1 and MC3 are the input and output mirrors, respectively. The end-mirror has a radius of curvature of 187 m, whereas the input- and output-mirrors are flat. The half round trip length is approximately 143 m. Table 1 summarises the IMC optical parameters relevant for the calculations in this paper. The complete information can be found in reference [1]. Figure 2 shows a picture of the current IMC end-mirror area, with the suspended mirror and the surrounding non-instrumented baffle [5].

Table 1. Parameters of the IMC needed for the calculations in this paper.

Parameter	Symbol	Value
Finesse	F	1000
Free spectral range	FSR	1.04×10^6 Hz
MC1 transmissivity	T_{in}	$\simeq 2.50 \times 10^{-3}$
MC3 reflectivity	R_{out}	$\simeq 1$

**Figure 2.** Current non-instrumented baffle (dark ring) surrounding the IMC end-mirror (pink). Also visible is the safety frame at the bottom of the picture.

The new baffle is being instrumented with novel Si-based photosensors developed by Hamamatsu and originally based on their S13955-01 series [6], with modifications in the packaging that render them compatible with ultra-high (10^{-9} mbars) vacuum conditions. The PDs are mounted on two large PCBs, which are not exposed to the light and include eight temperature sensors distributed across their surface. The front-end electronics also includes protection measures against large laser doses, in order to preserve the integrity of the PDs.

The infrared light from the IMC cavity penetrates the holed mirror-polished stainless steel baffle reaching the PDs behind them. The distribution of the sensors on the baffle can be seen in figure 3, and follows the pattern of light reaching the baffle as obtained in the simulation studies shown in next section. The largest amount of light is expected to be near the inner radius of the baffle, and thus this region is populated densely with 52 PDs arranged in two concentric lines. Twenty-four additional PDs cover the external region of the baffle for a total of 76 PDs.

The baffle, as a whole, is designed to preserve as much as possible the optical properties of the existing one in terms of reflectivity and total scattering to maintain the performance of the IMC cavity. In particular, both baffle and sensor surfaces are anti-reflecting coated and all the components have been validated for ultra-high vacuum compatibility. Furthermore, the inner edge of the baffle and the edges of the holes are produced with a small radius of curvature to prevent scattering. Finally, the weight and centre-of-gravity of the new baffle will be very similar to those of the current one, to facilitate the installation in the existing suspension system. A publication with a detailed description of all the instrumental aspects of the new baffle is now in preparation.

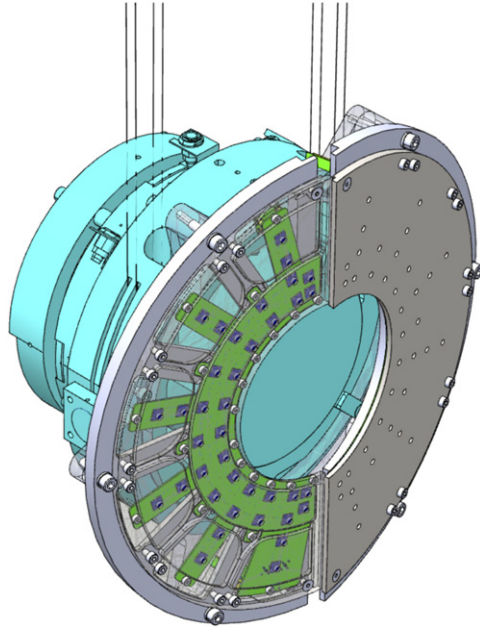


Figure 3. Design of the instrumented baffle surrounding the IMC end-mirror.

This paper presents simulation studies to determine the distribution of light that reaches the IMC end-mirror and the surrounding baffle. Different scenarios in the operation of the interferometer are considered, which vary the amount of light illuminating the PDs. They include the nominal operation with the IMC cavity in resonance, the presence of small beam misalignments, and transient noise events leading to a severe displacement of the laser beam inside the cavity. Throughout this study an area of 0.49 cm^2 is used for a single PD, which corresponds to its effective sensitive area. However, since the PDs are partially obscured by conical holes of 0.4 cm of diameter, the power they will actually be exposed to will be in principle reduced by a factor of four. The size and shape of the holes have been chosen such that no light reaches the edges of the PDs. All the results presented in the following sections are obtained for a laser input power of 40 W , as foreseen in O4. The highest power reached in O3 was 25 W .

2. Input mode cleaner in resonance

In this section we evaluate the amount of light that reaches the baffle when the IMC is in resonance, both under the assumption of perfect alignment and for misalignments compatible with the resonance state. The fields in the IMC are calculated using a software package called SIS, stationary interferometer simulation [7, 8], which was developed within the LIGO collaboration and made available to the gravitational waves community [9]. This software calculates the stationary state field in an optical system by calculating its propagation and interaction with the optics using the Fresnel approximation of the Huygens integral. Fast Fourier transforms are used to accelerate the conversion of fields between the spatial domain to the frequency domain during the field calculation.

All relevant IMC data, size, location and reflectivity of the mirrors, and apertures of the baffles in front of the mirrors, are included in the simulation. Of particular importance is the

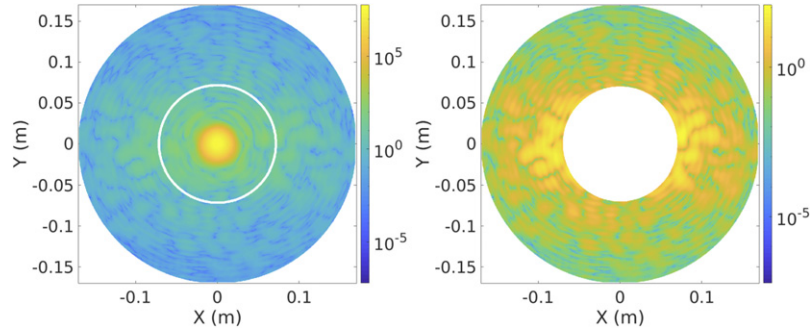


Figure 4. 2-D map of the power distribution (in W m^{-2}) in the ensemble mirror plus baffle (left) and in the baffle surface only (right) for the cavity completely aligned. The white line in the left plot indicates the inner radius of the baffle.

inclusion of the surface maps of the mirrors, which were measured at LMA with a spatial resolution of 0.35 mm. Since the incident angle of the field to MC2 is 0.02 degrees, a reflected field is scattered back by MC2 to MC3. The power of this backward propagating field is around 0.1% of the field propagating in the normal direction. Although this backward field is not explicitly included, it is used to calculate the power of the forward field correctly.

In the implementation presented in this paper the physical properties of the baffle are not considered, only its dimensions and its geometrical location surrounding the end-mirror, where the field is evaluated. Although this might be considered a crude approximation, the simulation still provides sensible results given the fact that the amount of light illuminating the baffle is very small.

As discussed below, the results of the simulation rely on the detailed description of the mirror surface maps, the mirror apertures and interference effects, leading to non-Gaussian tails dominating the power spectrum away from the center of the mirror. On the other hand, the power spectrum at the core of the mirror could be described, in first approximation, by a naive resonator model, leading to a Gaussian distributed spectrum as a function of the distance from the center of the mirror.

2.1. Perfectly aligned cavity

We first consider the IMC locked and perfectly aligned. In this steady state condition the laser beam hits the center of the end-mirror. The power light distribution in the ensemble mirror plus baffle can be seen in figure 4 left. The total power reaching the mirror and the baffle, altogether, is of the order of 1.35×10^4 W. Figure 4 right shows the power reaching the baffle surface only, which amounts to 0.21 W, a $1.6 \times 10^{-3}\%$ of the total power. The region in the baffle with the maximum light exposure is located in the horizontal axis near the right inner edge of the baffle, and amounts to about 2×10^{-2} W over an area of 3.1 cm^2 . Expressed in terms of sensors, this implies that a PD located in that region would receive a maximum dose of about 3.2×10^{-3} W, whereas a PD located in the outer part of the baffle, at a radius of 17 cm from the center of the mirror, would receive a power of the order of 3.2×10^{-5} W. The very low dark current for the PDs in the baffle, at a maximum level of about 5000 pA, will allow detecting light power at the level of 10^{-5} W with more than three orders of magnitude of margin in the signal over noise ratio.

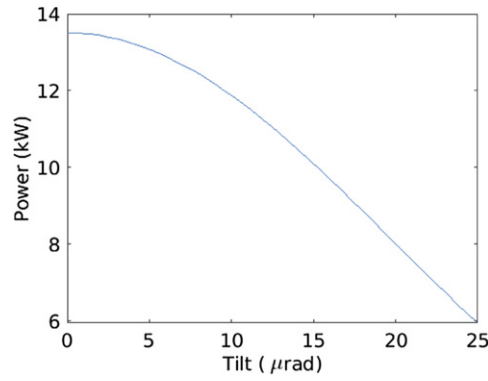


Figure 5. Total power (in W) reaching the mirror plus baffle ensemble as a function of the tilt applied to the end-mirror.

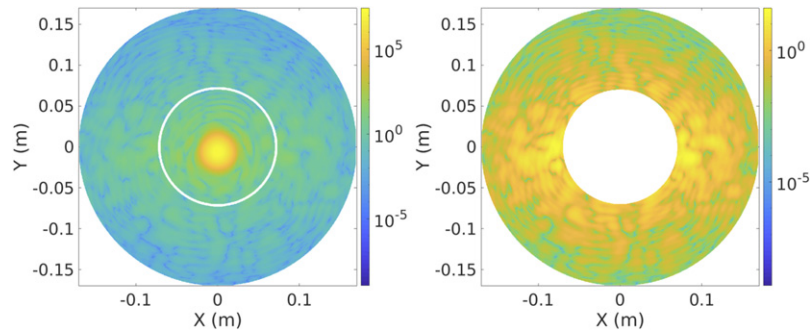


Figure 6. 2-D map of the power distribution (in W m^{-2}) in the ensemble mirror plus baffle (left) and in the baffle surface only (right) for the cavity on resonance but with a misalignment $\alpha = 10 \mu\text{rad}$. The white line in the left plot indicates the inner radius of the baffle.

2.2. Misaligned cavity

We now consider a scenario in which the IMC is misaligned, but the misalignment is such that the cavity remains in resonance. The misalignment is implemented in the simulation via a tilt of the end-mirror with respect to its nominal position, which results into a vertical displacement of the beam position. Figure 5 shows the power in the mirror plus baffle ensemble as a function of the tilt angle α in the range 0 to $25 \mu\text{rad}$. Predictably, the power decreases with increasing tilt. As mentioned above, the baffles in the simulation are included as extensions of the mirrors.

As an example, figure 6 left shows the power distribution for the case $\alpha = 10 \mu\text{rad}$. The total power in the mirror and baffle ensemble becomes $1.19 \times 10^4 \text{ W}$, where only 0.17 W (a $1.4 \times 10^{-3}\%$ of the total power) illuminate the baffle itself. As discussed below, this is not a homogeneous effect. Although the consequence of the beam misalignment is an overall reduction of the power in the mirror plus baffle ensemble, the power reaching a particular region of the baffle can become larger.

Figure 6 right shows the power distribution in the baffle surface only. The region in the baffle with the maximum exposure receives a total of $8.9 \times 10^{-3} \text{ W}$, distributed in an area of

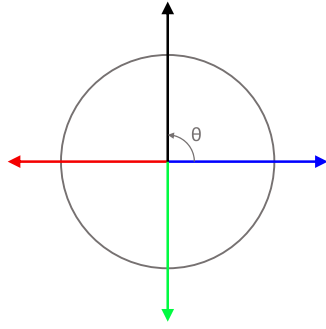


Figure 7. Definition of θ and color code used in figure 8.

1.4 cm^2 , in the same location as in the aligned case. This translates into a maximum exposure of a single PD of about $3.0 \times 10^{-3} \text{ W}$. These results are dominated by uncertainties due to the limited accuracy in the description of the mirror maps, difficult to measure precisely over all spatial wavelengths.

Given that the mirror has not perfect circular symmetry, the radial distribution of the power depends on the angle θ , depicted in figure 7. For illustration purposes, figure 8 shows the power as a function of the radius for different values of θ . As anticipated, the power spectrum is approximately Gaussian-distributed at small radius and presents long non-Gaussian tails at large radius. In the case of the aligned cavity scenario, slightly different spectra are determined for different θ values. When the cavity is misaligned, leading to a vertical displacement of the beam, no effect is observed in the bulk of the distribution at small radius for $\theta = 0, \pi$, whereas a clear change is observed in the vertical direction for $\theta = \pi/2, 3\pi/2$. The changes due the misalignment in the non-Gaussian tails are more difficult to interpret since mirror surface maps, apertures and interference effects dominate, mixing vertical and horizontal effects. Altogether, this illustrates the importance of instrumenting the area surrounding the mirrors to determine the accuracy of the simulation with data. For example, a simple resonator model implementing ideal mirrors with no defects would predict, in the presence of misalignments, a large relative increase in the power seen by the baffles.

3. Input mode cleaner out of resonance

In this section we evaluate the amount of light that could illuminate the baffle in two extreme situations, first when the laser beam is so misaligned that the cavity loses its lock, and then in the case of severe displacements of the beam within the cavity caused by transient noise. In both cases we resort to analytical calculations to derive the power reaching the PDs.

3.1. Misaligned cavity out of resonance

For an extremely misaligned beam ($\alpha > 35 \mu\text{rad}$) the cavity loses its lock. In order to determine the level of exposure of a PD in such configuration, an analytical calculation is performed based on the transmissivities and reflectivities of the mirrors of the cavity [10]. For a beam of transverse area A_{beam} , the intensity in MC2, I_{MC2} , is evaluated as

$$I_{\text{MC2}} = P_{\text{in}} \times T_{\text{in}} \times R_{\text{out}} / A_{\text{beam}}, \quad (3.1)$$

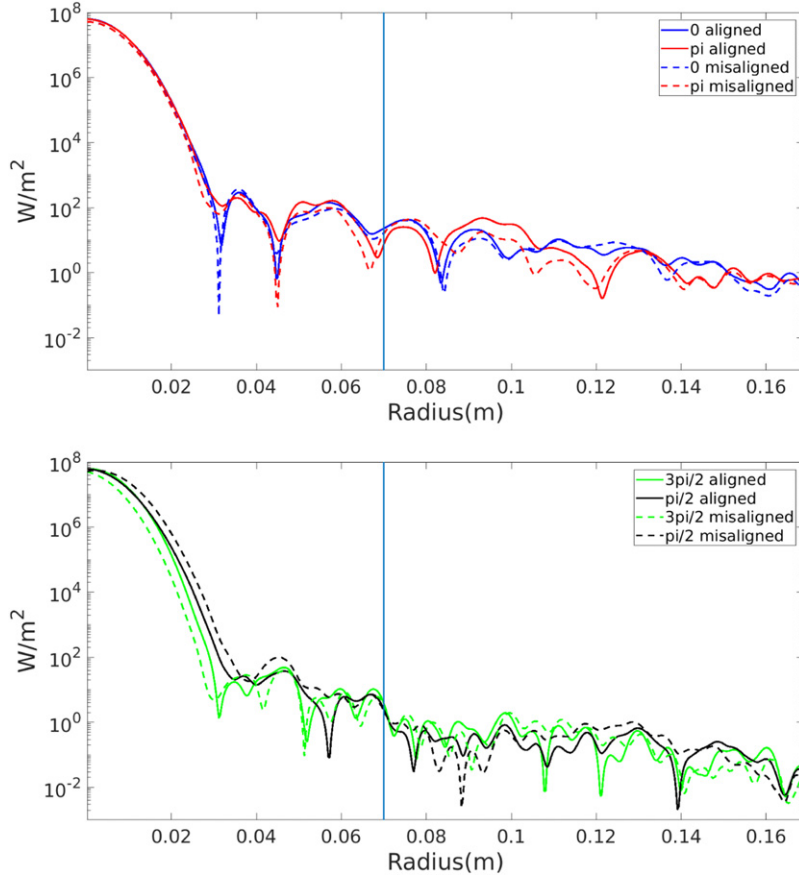


Figure 8. Distribution of power (in W m^{-2}) as a function of the distance from the center of the mirror at $\theta = 0$ and $\theta = \pi$ (top) and $\theta = \pi/2$ and $\theta = 3\pi/2$ (bottom) for the IMC cavity completely aligned and with a misalignment of $\alpha = 10 \mu\text{rad}$. The vertical line indicates the inner radius of the baffle. The PDs are located at a distance of about 8 to 14 cm from the center of the mirror.

where T_{in} is the transmissivity of MC1 and R_{out} is the reflectivity of MC3. Using the values for T_{in} and R_{out} shown in table 1, and a beam diameter of 1 cm at the MC2, $I_{\text{MC2}} = 1.3 \times 10^3 \text{ W m}^{-2}$. Assuming a Gaussian beam illuminating directly a PD, the maximum exposure it would receive becomes $2.1 \times 10^{-2} \text{ W}$. Laser-induced damage-threshold tests performed at the laboratory indicate that the PDs have a light power tolerance at least two orders of magnitude larger than the light dose expected to reach the sensors in each lock loss.

3.2. Transient noise, mechanical drift

Finally, we have considered the scenario of a sudden cavity misalignment due to transient noise, which would lead to a mechanical drift that could potentially result in exposing the PDs for a short period of time to the energy stored in the cavity. The total energy stored in the cavity in nominal conditions can be expressed as $E_{\text{cav}} = P_{\text{in}} \times g \times \tau$ [10], where P_{in} is the input power, g is the gain of the cavity, defined in terms of its finesse F as $g = 2F/\pi$, and τ is the decay time of the cavity (average time that a photon stays in the cavity) defined in terms

Table 2. Values (in W) for the total power reaching the mirror and baffle ensemble, the power reaching the baffle and the maximum power that could impinge on a PD, for the different scenarios discussed in the paper and an input laser power of 40 W.

Scenarios	Mirror plus baffle	Baffle	PD
Resonance	1.35×10^4	0.20	3.2×10^{-3}
Misaligned ($10 \mu\text{rad}$)	1.19×10^4	0.17	3.0×10^{-3}
Extremely misaligned	—	—	2.1×10^{-2}
Mechanical drift	390	—	130 (for 10 ms)

of its finesse and free spectral range FSR as $\tau = F/(2\pi \times \text{FSR})$. Using the values in table 1, $g \sim 640$, $\tau = 153 \mu\text{s}$, and $E_{\text{cav}} = 3.9 \text{ J}$.

To translate the total energy in the cavity to the total power illuminating the baffle, the time response of the payload and suspension systems needs to be considered. It is expected that the feedback systems will need 10 ms to apply measures to correct the misalignment, bringing the power illuminating the baffle back to tiny values. During the 10 ms reaction time, however, the baffle is potentially exposed to a power not exceeding 390 W.

To determine the maximum radiation that could hit a PD in this extreme case, we consider a beam of Gaussian transverse profile with 390 W of amplitude and 1 cm of size pointing to the center of a PD. The power it would be exposed to is obtained by integrating the Gaussian shape of the power distribution over the area of the PD, and results in a total power of about 130 W. This is a rough estimation since a much more detailed analysis would be required to fully address this scenario.

4. Summary

Table 2 summarizes the values of the power reaching the IMC end-mirror and baffle ensemble, the power reaching the baffle, and the maximum power that could impinge on a PD, for the different scenarios discussed in the paper. As explained in the introduction, even if the PDs are partially hidden by the baffle, their total sensitive area has been used in the calculations. Thus, the quoted values are conservative.

Due to the simplicity of the model used to simulate the baffle, the values shown in table 2 should be taken as a semi-quantitative estimate of the power in the baffle area in the different scenarios. Therefore, the data obtained with the instrumented baffle surrounding the IMC end-mirror will be used not only to determine the relevance of the PDs geometry in the baffles to be placed around the test masses and the level of anticipated light doses, relevant for risk mitigation measures in the front-end electronics, but also to calibrate and further improve the simulation tools.

Acknowledgments

The authors gratefully acknowledge the European Gravitational Observatory (EGO) and the Virgo Collaboration for providing access to the facilities. The LIGO Observatories were constructed by the California Institute of Technology and Massachusetts Institute of Technology with funding from the National Science Foundation under cooperative agreement PHY-9210038. The LIGO Laboratory operates under cooperative agreement PHY-1764464. This work was partially supported by the Spanish MINECO under the Grant Nos. SEV-2016-0588

and PGC2018-101858 B-I00, some of which include ERDF funds from the European Union. IFAE is partially funded by the CERCA program of the Generalitat de Catalunya.

ORCID iDs

A Romero-Rodríguez  <https://orcid.org/0000-0003-2275-4164>

A Allocca  <https://orcid.org/0000-0002-5288-1351>

M Martínez  <https://orcid.org/0000-0002-3135-945X>

Ll M Mir  <https://orcid.org/0000-0002-4276-715X>

References

- [1] Acernese F *et al* (Virgo Collaboration) 2015 Advanced Virgo: a second-generation interferometric gravitational wave detector *Class. Quantum Grav.* **32** 024001
- [2] Acernese F *et al* (Virgo Collaboration) 2019 Increasing the astrophysical reach of the advanced Virgo detector via the application of squeezed vacuum states of light *Phys. Rev. Lett.* **123** 23
- [3] Aasi J *et al* (LIGO Collaboration) 2015 Advanced LIGO *Class. Quantum Grav.* **32** 074001
- [4] Akutsu T *et al* 2016 Vacuum and cryogenic compatible black surface for large optical baffles in advanced gravitational-wave telescopes *Opt. Mater. Express* **6** 1613
- [5] Nikhef@Virgo Mechanical Technology Department 2012 Input mode cleaner and Dihedron, www.nikhef.nl/pub/departments/mt/projects/virgo/inputmodecleaner.html
- [6] Hamamatsu 2020 Data sheet of Si photodiode S13955-01 www.hamamatsu.com/resources/pdf/ssd/s13955-01_etc_kspd1087e.pdf
- [7] Yamamoto H *et al* 2006 Simulation tools for future interferometers *J. Phys.: Conf. Series* **32** 398–403
- [8] Wenxuan J, Effler A and Frolov V 2018 Physical and statistical analysis of scatter in Fabry–Pérot arm cavity of advanced LIGO (LIGO-T1800224-v1) <https://dcc.ligo.org/LIGO-T1800224/public>
- [9] Yamamoto H 2013 SIS (stationary interferometer simulation) manual, LIGO-T070039-v8 <https://dcc.ligo.org/LIGO-T070039-v8/public>
- [10] Saulson P 2019 *Advanced Interferometric Gravitational-Wave Detectors* vol 2 ed D Reitze and H Grote (Singapore: World Scientific)