

GRAVITY-MODE PERIOD SPACINGS AS A SEISMIC DIAGNOSTIC FOR A SAMPLE OF γ DORADUS STARS FROM *KEPLER* SPACE PHOTOMETRY AND HIGH-RESOLUTION GROUND-BASED SPECTROSCOPY*

T. VAN REETH¹, A. TKACHENKO^{1,8}, C. AERTS^{1,2,3}, P. I. PÁPICS^{1,3,9}, S. A. TRIANA¹, K. ZWINTZ^{1,4}, P. DEGROOTE¹, J. DEBOSSCHER¹, S. BLOEMEN^{2,3}, V. S. SCHMID^{1,3,10}, K. DE SMEDT¹, Y. FREMAT⁵, A. S. FUENTES¹, W. HOMAN¹, M. HRUDKOVA⁶, R. KARJALAINEN⁶, R. LOMBAERT¹, P. NEMETH⁷, R. ØSTENSEN¹, G. VAN DE STEENE⁶, J. VOS¹, G. RASKIN¹, AND H. VAN WINCKEL¹

¹ Instituut voor Sterrenkunde, KU Leuven, Celestijnenlaan 200D, B-3001 Leuven, Belgium; timothy.vanreeth@ster.kuleuven.be

² Department of Astrophysics, IMAPP, University of Cologne, P.O. Box 9010, 50900 GL Nijmegen, The Netherlands

³ Kavli Institute for Theoretical Physics, University of California, Santa Barbara, CA 93106, USA

⁴ Institute for Astro- and Particle Physics, University of Innsbruck, Technikerstrasse 25/8, A-6020 Innsbruck, Austria

⁵ Royal Observatory of Belgium, Ringlaan 3, B-1180 Brussels, Belgium

⁶ Isaac Newton Group of Telescopes, Apartado de Correos 321, E-38700 Santa Cruz de la Palma, Canary Islands, Spain

⁷ Dr. Karl Remeis-Observatory & ECAP, Astronomisches Inst., FAU Erlangen-Nuremberg, D-96049 Bamberg, Germany

Received 2015 March 5; accepted 2015 April 8; published 2015 June 22

ABSTRACT

Gamma Doradus stars (hereafter γ Dor stars) are gravity-mode pulsators of spectral type A or F. Such modes probe the deep stellar interior, offering a detailed fingerprint of their structure. Four-year high-precision space-based *Kepler* photometry of γ Dor stars has become available, allowing us to study these stars with unprecedented detail. We selected, analyzed, and characterized a sample of 67 γ Dor stars for which we have *Kepler* observations available. For all the targets in the sample we assembled high-resolution spectroscopy to confirm their F-type nature. We found fourteen binaries, among which are four single-lined binaries, five double-lined binaries, two triple systems, and three binaries with no detected radial velocity variations. We estimated the orbital parameters whenever possible. For the single stars and the single-lined binaries, fundamental parameter values were determined from spectroscopy. We searched for period spacing patterns in the photometric data and identified this diagnostic for 50 of the stars in the sample, 46 of which are single stars or single-lined binaries. We found a strong correlation between the spectroscopic $v \sin i$ and the period spacing values, confirming the influence of rotation on γ Dor-type pulsations as predicted by theory. We also found relations between the dominant g -mode frequency, the longest pulsation period detected in series of prograde modes, $v \sin i$, and $\log T_{\text{eff}}$.

Key words: asteroseismology – stars: fundamental parameters – stars: oscillations – stars: variables: general

1. INTRODUCTION

One of the most important elements of modern astronomy and astrophysics is the theory of stellar structure and evolution. It has a direct impact on research domains such as the interstellar medium, exoplanets, galactic evolution, etc. While the general outline of this theory is nowadays well understood and globally accepted, various aspects such as the interior stellar rotation and the chemical mixing processes inside stars are largely unknown.

A key element of stellar structure and evolution that may vary between different theoretical models is the evolution of the convective core in intermediate-mass ($1 M_{\odot} \lesssim M_{*} \lesssim 2 M_{\odot}$) main-sequence stars. This is the transition range from low-mass stars with a radiative core and a convective envelope to high-mass stars with a convective core and a radiative envelope. For these stars the evolution of the convective core throughout the

star's core-hydrogen burning phase is dominated by the changes in the local opacity and the energy produced by the CNO hydrogen burning cycle with respect to the pp chains. Due to the interplay of these physical processes, the convective core can either grow or shrink during the core hydrogen burning phase, depending on the star's initial mass (e.g., Mitalas 1972; Crowe & Mitalas 1982; Silva Aguirre et al. 2011). The precise transition point between these two regimes in theoretical models not only depends on the star's chemical composition and the internal mixing processes, but also on their numerical treatment (Miglio et al. 2008).

A good way to calibrate and improve upon the existing stellar structure and evolution theories in this mass range, is a detailed asteroseismic study of γ Dor pulsators. γ Dor stars are slightly more massive ($1.4\text{--}2.5 M_{\odot}$) and more luminous than the Sun and exhibit non-radial gravity-mode pulsations (e.g., Kaye et al. 1999). The pulsations, which have a typical period between 0.3 and 3 days and are excited by the convective flux blocking mechanism at the bottom of the convective envelope, probe the internal stellar structure of the stars up to the edge of the convective core (Guzik et al. 2000; Dupret et al. 2005). It was shown by Tassoul (1980) that for a non-rotating star consisting of a convective core surrounded by a chemically homogeneous radiative envelope, pulsations with the same spherical degree l and different radial orders n are equidistantly spaced in the period domain if $l \ll n$. This model was strongly improved upon by Miglio et al. (2008), who showed that a chemical gradient at the edge of the convective core modifies the g -mode resonance cavity, which in turn results in periodic dips in the period spacing

* Based on data gathered with the NASA Discovery mission *Kepler* and spectra obtained with the HERMES spectrograph, which is installed at the Mercator Telescope, operated on the island of La Palma by the Flemish Community at the Spanish Observatorio del Roque de los Muchachos of the Instituto de Astrofísica de Canarias, and supported by the Fund for Scientific Research of Flanders (FWO), Belgium, the Research Council of KU Leuven, Belgium, the Fonds National de la Recherche Scientifique (F.R.S.-FNRS), Belgium, the Royal Observatory of Belgium, the Observatoire de Genève, Switzerland, and the Thüringer Landessternwarte Tautenburg, Germany. All data used in this study are downloadable from <https://fys.kuleuven.be/ster/Projects/gamma-doradus>

⁸ Postdoctoral Fellow of the Fund for Scientific Research (FWO), Flanders, Belgium.

⁹ Postdoctoral Fellow of the Fund for Scientific Research (FWO), Flanders, Belgium.

¹⁰ PhD Fellow of the Fund for Scientific Research (FWO), Flanders, Belgium.

Table 1
The Obtained Parameter Values and their Respective Error Margins for Several of the Binary Systems in Our Sample

	KIC 3222854	KIC 3952623	KIC 7836348	KIC 8693972	KIC 11754232
Method	Spectroscopy	Spectroscopy	FM Method	PM Method	Spectroscopy
P (days)	$\gtrsim 100$	19.515	19.5	19.526	10.0132
σ_P	...	0.006	0.2	0.001	0.0006
e	...	0.17	0	0.191	0.23
σ_e	...	0.04	...	0.001	0.03
ω (2π)	...	1.65	...	1.5481	1.05
σ_ω	...	0.1	...	0.0006	0.11
T_0 (BJD)	...	2456442.8	2455685.96
σ_{T_0}	...	0.3	0.15
K_1 (km s $^{-1}$)	...	30	30.08	19.36	9.3
σ_{K_1}	...	0.8	...	0.04	0.2
K_2 (km s $^{-1}$)	...	52.5
σ_{K_2}	...	1.4
$a_1 \sin i$ (AU)	...	0.053	0.054	...	0.0083
$\sigma_{a_1 \sin i}$...	0.001	0.0002
$a_2 \sin i$ (AU)	...	0.093
$\sigma_{a_2 \sin i}$...	0.003
γ (km s $^{-1}$)	-39.5	-15.7	-26
σ_γ	1.7	2.5	0.2

Note. For KIC 3952623, KIC 7867348, and KIC 11754232, we were able to obtain an orbital solution.

pattern, where the depth and the regularity of the dips indicate the steepness and the location of the gradient, respectively. In the case of a growing convective core, there is a chemical discontinuity at the edge of the core, whereas a shrinking core leaves behind a chemical gradient in the near core region. Bouabid et al. (2013) studied the influence of extra mixing processes and stellar rotation. Chemical mixing washes out the μ -gradient, which strongly reduces the prominence of the dips in the period spacing pattern.

Rotation introduces frequency splitting, which in the case of fast rotation results in separated period spacing patterns depending on the value of the azimuthal order m . Retrograde mode patterns will typically have an upward slope, while both prograde and zonal mode patterns have a downward slope in the graphical representation of ΔP versus P (Bouabid et al. 2013). For modes excited with equal amplitude, it is expected that prograde sectoral modes (with $0 < m = l$) are the easiest to detect. It has been shown that for all other pulsation modes the Coriolis force will trap the pulsation within an equatorial waveguide, which becomes more narrow as the rotational velocity increases. As a result, the geometrical cancellation effects will be more pronounced for these oscillation modes, making it harder to detect them (Townsend 2003).

Thanks to the space mission *Kepler* (Koch et al. 2010), we now have photometric observations of four years duration, which is essential for gravity-mode pulsators to enable successful seismic modeling (e.g., Pápics et al. 2014). The advantage of space-based observations is the large number of frequencies which can be resolved, as opposed to only a handful of modes detected in ground-based data of γ Dor stars (e.g., Cuyper et al. 2009). Various period spacing patterns for AF-type main-sequence pulsators have meanwhile been reported (e.g., Chapellier et al. 2012; Bedding et al. 2014; Kurtz et al. 2014; Saio et al. 2015), as well as sample compilations and studies of such pulsator classes (e.g.,

Grigahcène et al. 2010; Balona et al. 2011; Uytterhoeven et al. 2011; Bradley et al. 2015).

Here, we study the sample of 70 γ Dor candidates as composed by Tkachenko et al. (2013a) in full depth. For all the stars in this sample, we collected the four-year high-precision *Kepler* photometry and we gathered high-resolution spectroscopy to make a full observational characterization of the sample. This allows us to do a detailed statistical analysis of the observed properties for this sample of gravity-mode pulsators. In Section 2, we discuss the available data and the applied data reduction methods. In Section 3, we evaluate the γ Dor-type nature of the targets and check for binarity. We also list the fundamental parameter values derived from the spectroscopy. We then look for period spacing patterns in the photometric data in Section 4 and check for correlations with the spectroscopic parameter values (Section 5), before coming to our conclusions (Section 6). All our data products are made publicly available along with this publication.

2. OBSERVATIONS AND DATA REDUCTION

For each star in our sample we obtained high-resolution spectra between 2011, 2013, and 2014 May and August with the HERMES spectrograph ($R = 85,000$, $\lambda = 377\text{--}900$ nm, Raskin et al. 2011) at the 1.2 m Mercator telescope (Observatorio del Roque de los Muchachos, La Palma, Canary Islands, Spain). The total number of spectra and observation times are listed per star in Table 3 in the Appendix.

The obtained spectra were reduced with the most recent version of the HERMES pipeline (release 5) and the individual spectra were subsequently normalized in two steps by fitting a cubic and linear spline through the flux continuum respectively, as described by Pápics et al. (2012). Outliers in the spectra resulting from cosmic hits were identified by comparing the local flux with the median value in the surrounding spectral region (of

Table 2
Results of the Multiple Linear Regression

Explanatory Variables	Separate Models			Multivariate Models		
	Estimate (σ)	p -value	R^2	Estimate (σ)	p -value	R^2
Models for the Dependent Variable $\langle \frac{d\Delta P}{dP} \rangle$						
$\log(\nu \sin i)$	-0.032(0.004)	0.025	0.606
Models for the Dependent Variable $\langle P \rangle$						
Intercept	77.09
$\log(\nu \sin i)$	-0.45(0.10)	0.0001	0.350	-0.52(0.09)	<0.0001	...
$\log T_{\text{eff}}$	-5.8(4.2)	0.313	0.050	-10.4(3.2)	0.0346	...
						0.501
Models for the Dependent Variable $\langle \Delta P \rangle$						
$\log(\nu \sin i)$	-0.024(0.002)	<0.0001	0.796
Models for the Dependent Variable f_g						
Intercept	-118.23(0.32)
$\nu \sin i$	0.0093(0.0016)	<0.0001	0.468	0.0103(0.0013)	<0.0001	...
$\log T_{\text{eff}}$	22.1(10.5)	0.142	0.104	30.9(6.6)	0.0047	...
						0.665
ζ	0.61(0.14)	<0.0001	0.346
$\langle P \rangle$	-1.93(0.28)	<0.0001	0.549
Models for the Dependent Variable P_{max}						
Intercept	39.50(0.14)
$\nu \sin i$	-0.0060(0.0006)	<0.0001	0.703	-0.0064(0.0006)	<0.0001	...
$\log T_{\text{eff}}$	-4.4(5.9)	0.550	0.015	-10.0(2.9)	0.0292	...
						0.773
ζ	-0.33(0.07)	0.0079	0.358
$\langle P \rangle$	1.31(0.08)	<0.0001	0.876
$\left\langle \frac{d\Delta P}{dP} \right\rangle$	18.4(2.8)	0.0130	0.526
f_g	-0.38(0.06)	<0.0001	0.505

Note. We list the coefficients of the covariates for the different model fits as well as the p -values (obtained from a t -test) and the R^2 values.

40 pixels). If the difference exceeded 5σ , where σ is determined as the inverse of the local signal-to-noise ratio (S/N) in the spectrum, the flux point was replaced by the median value.

In addition to the spectroscopic observations, all the stars in our sample have been observed by the *Kepler* mission with long cadence (i.e., with an integration time of 29.4 minutes). For the majority of stars, data are available for all eighteen quarters (Q0–Q17), while the shortest obtained light curves cover eight quarters. The available quarters are also listed for each star in Table 3.

Because the standard light curve extraction algorithm, provided by the Mikulski Archive for Space Telescopes, is known to result in residual instrumental signal in the low frequency region (Debusscher et al. 2013; Tkachenko et al. 2013a), we apply the light curve extraction algorithm developed by one of us (S.B.). The code is based on the use of customized masks, which allows us to include the signal

from more pixels, thereby reducing the influence of instrumental trends. The light curves of each individual quarter were subsequently detrended by changing the scale of the extracted light curves to magnitude and subtracting a first- or second-order polynomial, and concatenated. The outliers of the light curves were removed manually. We then extracted the frequencies from the reduced light curves by an iterative prewhitening method based on the Lomb–Scargle periodogram, as described in detail by Van Reeth et al. (2015). Observed oscillation frequencies above the Nyquist frequency were evaluated by comparing their amplitudes with those of possible aliases. Following Murphy et al. (2013), the frequency with the highest amplitude was retained. The errors of the frequency values were determined using the method by Schwarzenberg-Czerny (2003), which is based on the statistical errors resulting from a nonlinear least-squares fit corrected for the correlated nature of the data.

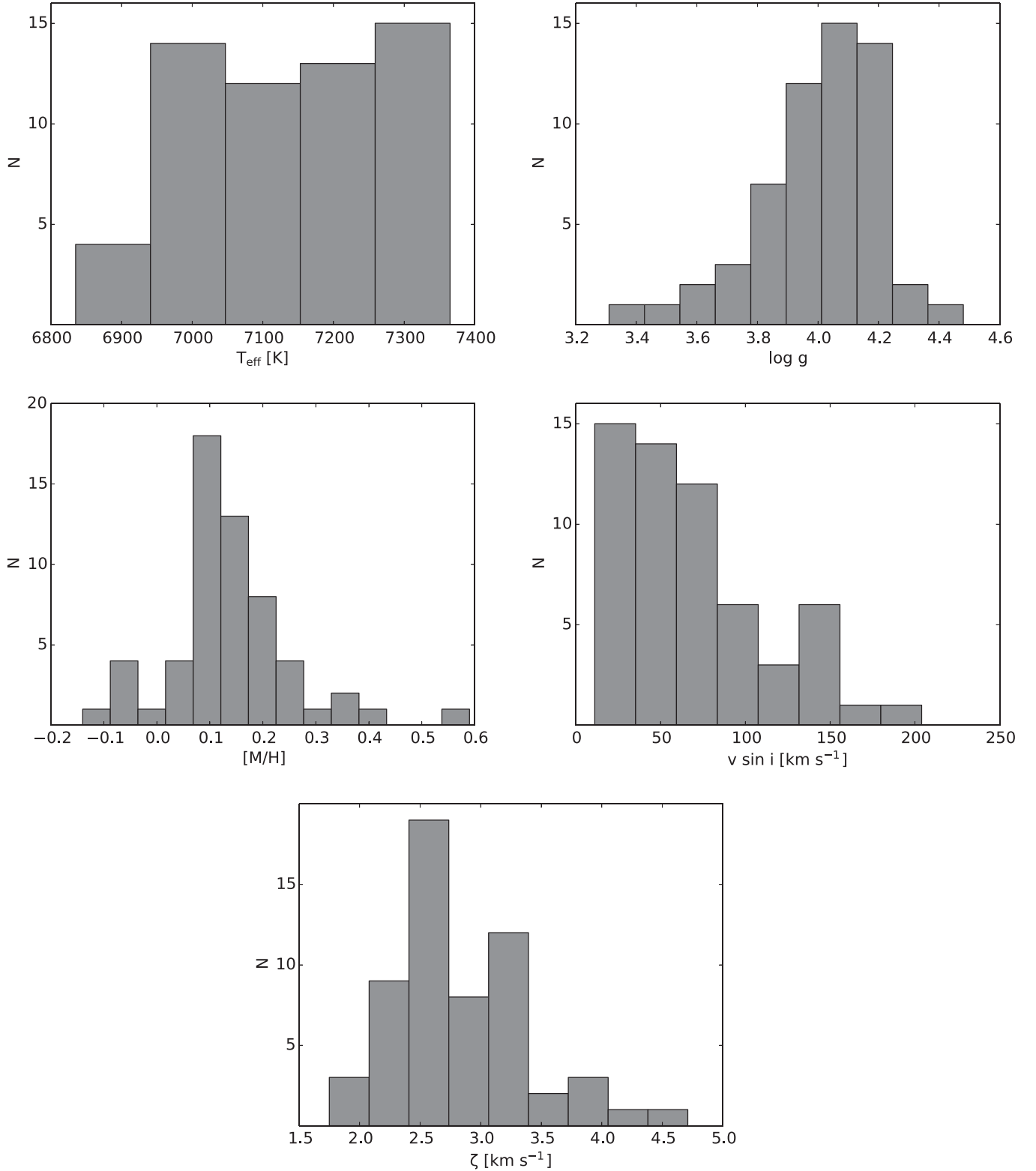


Figure 1. Histograms representing the distribution of the atmospheric parameter values obtained for the single stars and the single-lined binaries in our sample.

3. SPECTROSCOPIC ANALYSIS

Visual inspection of the available spectra revealed that two of the targets, KIC 5772452 and KIC 7516703, are in fact rotationally modulated K-type stars. They have therefore been discarded for the rest of this paper. In addition, one of the stars in the sample, KIC 10080943, had already been identified as a

double-lined binary by Tkachenko et al. (2013a). This star has been monitored extensively in spectroscopy meanwhile and reveals tidally excited as well as free oscillations. Given that some of its modes are of different origin than those of the other sample stars, it will be discussed separately (V. S. Schmid et al. 2015, in preparation). This leaves us with 67 stars for the current study.

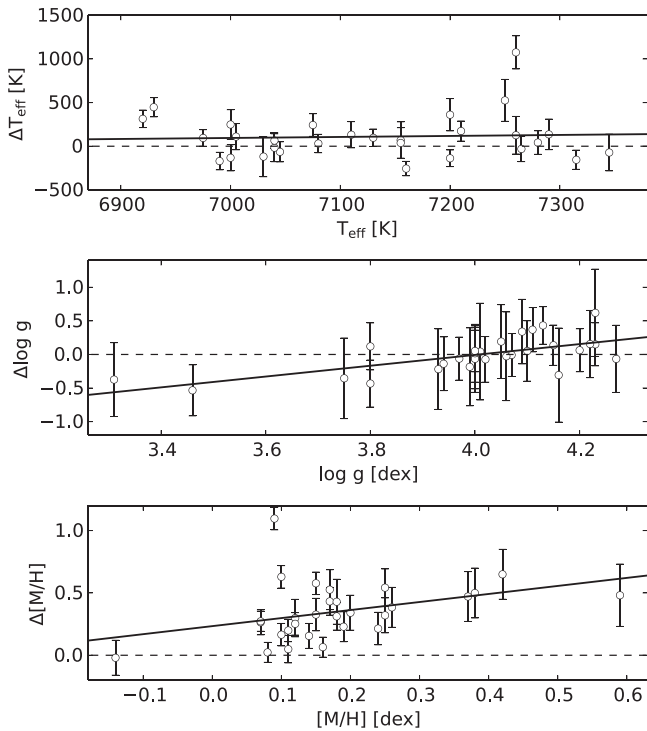


Figure 2. The differences between the spectroscopically derived values and the KIC values of the fundamental parameters T_{eff} (top), $\log g$ (middle) and $[M/H]$ (bottom), as a function of the spectroscopic values. Linear fits of the relations are represented by the solid black lines.

3.1. Binarity

As a first step in our data analysis we checked the targets in our sample for binarity. We applied the improved least-squares deconvolution (LSD) algorithm, as described by Tkachenko et al. (2013c), to the individual spectra of each star using a line mask with typical parameter values for a γ Dor star ($T_{\text{eff}} = 7000$ K; $\log g = 4.0$; $[M/H] = 0.0$; $\zeta = 2$ km s $^{-1}$). The line mask was computed with the spectrum synthesis synthV code (Tsymbal 1996), which makes use of a spectral line list (obtained from the VALD database, Kupka et al. 1999) and a predefined grid of atmospheric models (computed with the LLmodels code, Shulyak et al. 2004). This resulted in high S/N average line profiles which were checked for the presence of a signal from a possible companion. This resulted in the detection of four single-lined binaries (KIC 6468146, KIC 7867348, KIC 10467146, KIC 11754232), four double-lined binaries (KIC 3222854, KIC 3952623, KIC 6367159, KIC 8693972), two triple systems (KIC 6467639, KIC 6778063), and three binaries for which we have spectral contributions from both components, but no detected radial-velocity variations. This is also listed in Table 4.

The radial velocities of the different components of a binary were obtained by taking the center of gravity of their LSD profile.¹² For some of the detected single- and double-lined binaries we have obtained a sufficient number of observations to cover the binary orbit, allowing us to obtain an (order of magnitude) estimate of the orbital period P , as shown in Table 1. For KIC 3952623, KIC 7867348, and KIC 11754232 these values were sufficiently accurate to allow us to determine

values for the remaining spectroscopic orbital parameters (eccentricity e , the angle ω between the ascending node and the periastron, the time T_0 of periastron passage, the system velocity γ , velocity amplitudes K_j , and the projected semimajor axes $a_j \sin i$) as well, which are again listed in Table 1. The radial velocity variations of the two triple systems proved to be complicated to unravel. Here a more detailed analysis is required, which is outside the scope of this paper.

We also applied the frequency modulation (FM) method (Shibahashi & Kurtz 2012) and the phase modulation (PM) method (Murphy et al. 2014) to the pulsation frequencies extracted from the *Kepler* light curves. As Murphy et al. (2014) pointed out, the FM method is most sensitive for the detection of relatively short-period binaries, the PM method is more likely to be successful for the detection of long-period binaries and lower-frequency pulsations. In the case of KIC 3952623, we were able to confirm the spectroscopic results with both the FM and PM methods, as shown in Table 1, though the PM method leads to an underestimate of the velocity amplitude due to the relatively short orbital period. Neither method provided a satisfactory result for the other observed binaries. There are several possible explanations. First, an important requirement for these methods is that $P_{\text{puls}} \ll P_{\text{orbit}}$. The typical γ Dor pulsation period has a value between 0.3 and 3 days, so that often the difference between P_{puls} and P_{orbit} is too small. Second, as we will see in Section 4, we often observe period spacing patterns with a value between 0.001 and 0.035 days, depending on the rotation velocity and the spherical degree l of the mode. The corresponding spacings in the frequency domain are close to the ones we would obtain for a binary orbit above 20 days. Aside from KIC 3952623, there are indications of the presence of the expected signal for KIC 11754232, but unfortunately we only have eight quarters of data available for this star, which prevented a reliable analysis.

Out of the 14 targets that we found to be binaries, 7 are identified as γ Dor/ δ Sct hybrid pulsators (out of 11 hybrids in the studied sample of 69 targets). While this could mean that several of these binary systems consist of a γ Dor and a δ Sct star, we cannot exclude the possibility that one (or both) of the components are hybrid pulsators. Indeed, three hybrids are identified as single-lined binaries, and from the application of the FM method to KIC 3952623 we conclude that the studied δ Sct pulsations belong to the brightest component, which seems to indicate that the primary is a hybrid, considering the relatively high amplitudes of the γ Dor pulsations.

3.2. Fundamental Parameters

In the second part of the spectroscopic analysis, we focused on the stars which have been classified as either single stars or single-lined binaries. The spectra of these stars were corrected for any radial velocity variations (in the case of the single-lined binaries) and merged. This resulted in a single spectrum for each star, which we subsequently used to determine the fundamental spectroscopic parameter values. The advantage is that such a combined spectrum has a higher S/N and that pulsation line profile variations, which might otherwise skew the spectral analysis, are largely averaged out.

We use the Grid Search in Stellar Parameters code for the spectral analysis (Lehmann et al. 2011; Tkachenko et al. 2012). The values of the temperature T_{eff} , surface gravity $\log g$, metallicity $[M/H]$, microturbulence ζ and rotational velocity $v \sin i$ are determined from a χ^2 -minimization for the observed

¹² These are available from <https://fys.kuleuven.be/ster/Projects/gamma-doradus>.

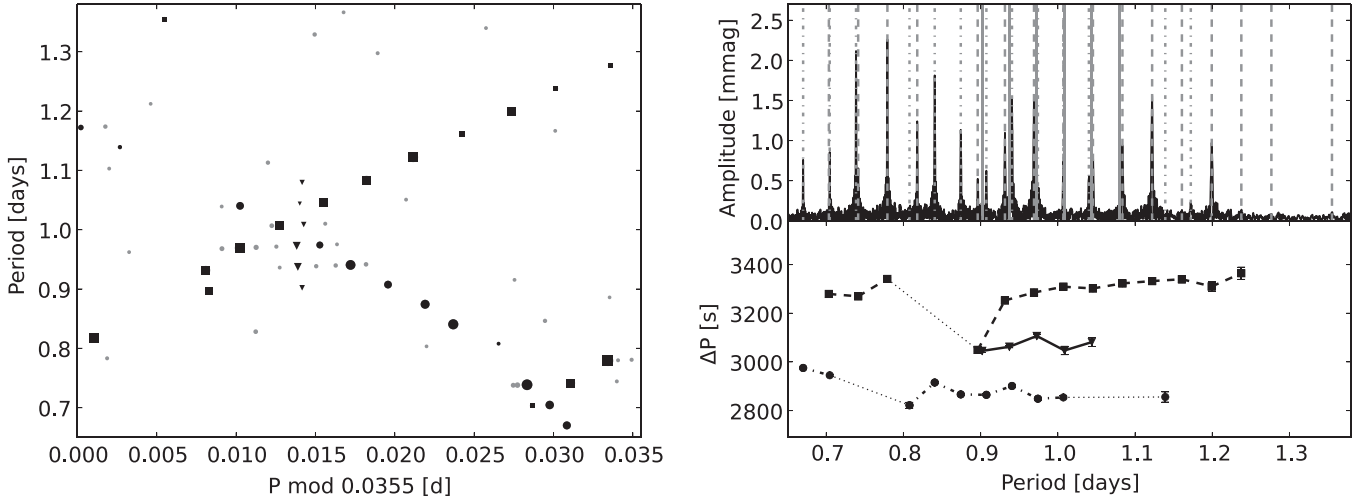


Figure 3. The period spacing patterns of the slowly rotating star KIC 9751996. Left: the pulsation series in a period échelle diagram. The prograde (black circles), zonal (black triangles) and retrograde (black squares) dipole modes are marked separately, while the other pulsation modes are shown in gray. Top right: the prograde (dash-dot lines), zonal (full lines), and retrograde (dashed lines) modes in the Fourier spectrum. Bottom right: the period spacing patterns, using the same symbols as before. The dotted lines indicate missing frequencies.

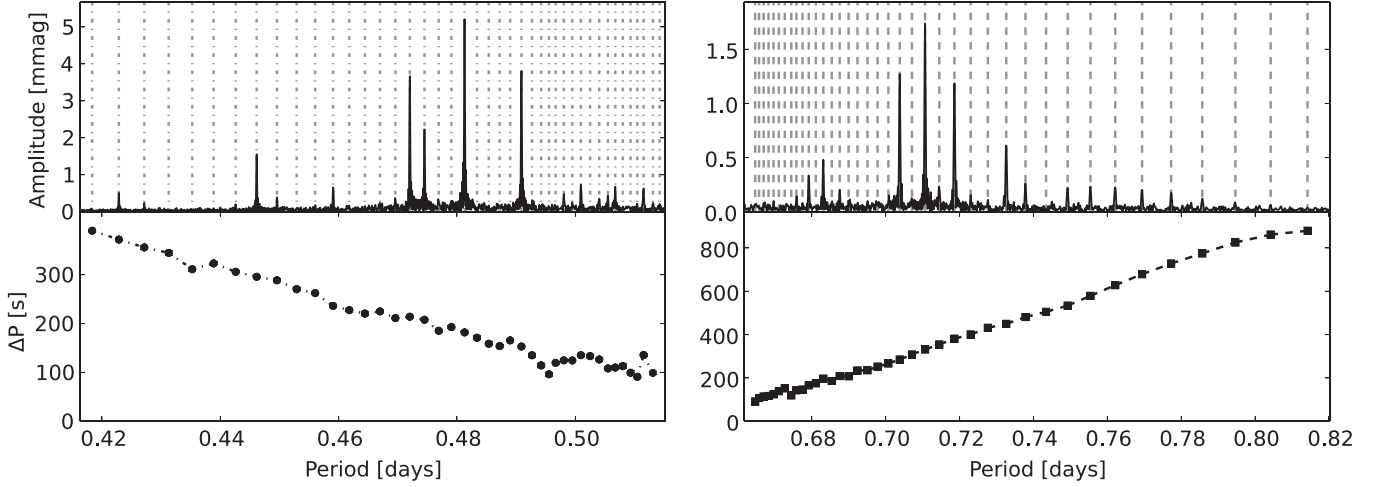


Figure 4. The prograde (left) and retrograde (right) period spacing patterns of KIC 8375138. The symbols used are the same as in Figure 3.

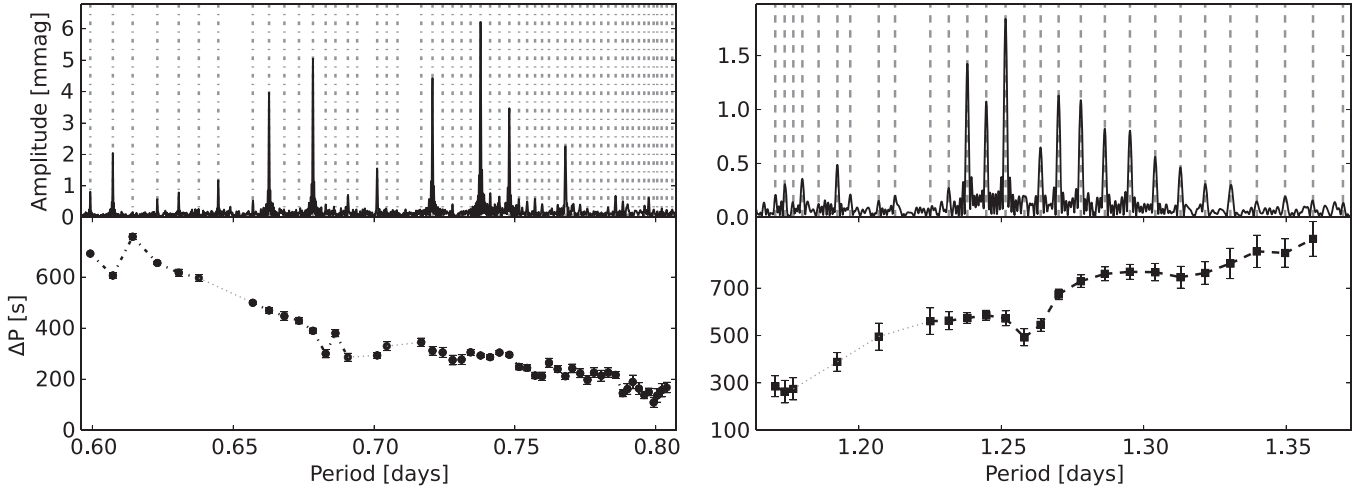


Figure 5. The prograde (left) and retrograde (right) period spacing patterns of KIC 2710594. The symbols used are the same as in Figure 3.

spectra with respect to synthetic spectra within a relatively large wavelength range. The synthetic spectra are computed for different values of the listed parameters using a combination of

the synthV code (Tsymbal 1996), the LLmodels code (Shulyak et al. 2004), and information obtained from the VALD database (Kupka et al. 1999), i.e., similar to how the LSD

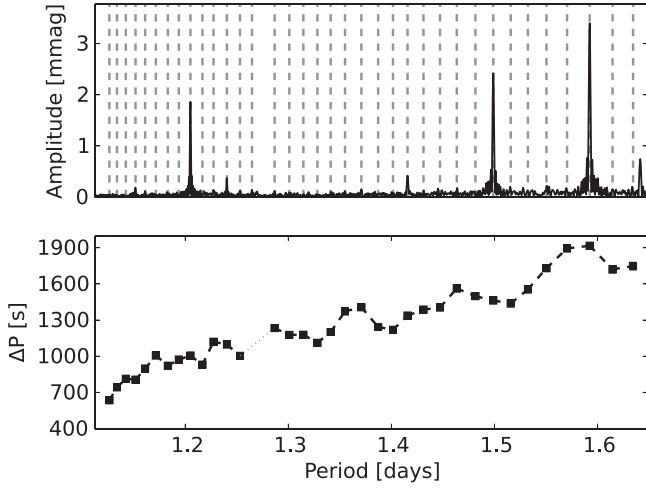


Figure 6. The retrograde period spacing patterns of KIC 11668783. The symbols used are the same as in Figure 3.

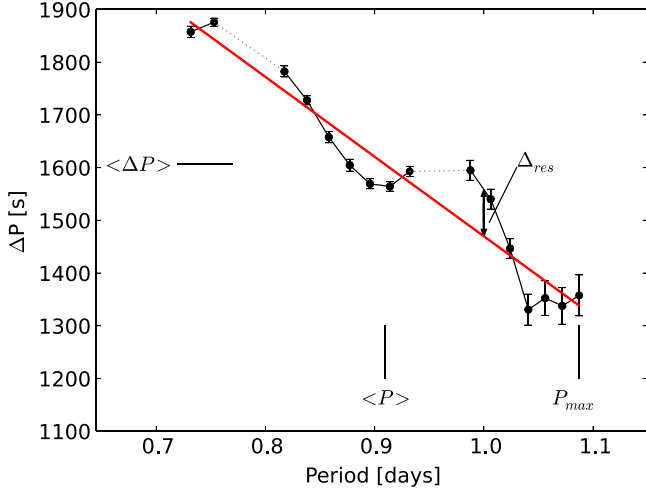


Figure 7. Illustration of some of the photometric parameters from the period spacing patterns (shown here for KIC 10224094) for the statistical analysis: $\langle P \rangle$ is the mean pulsation period, P_{\max} is the longest pulsation period, $\langle \Delta P \rangle$ is the mean spacing, and $\left\langle \frac{d\Delta P}{dP} \right\rangle$ is the mean derivative (computed from the polynomial fit, here shown in red). Finally, Δ_{res} is a measure of the difference between the polynomial fit and the period spacing pattern.

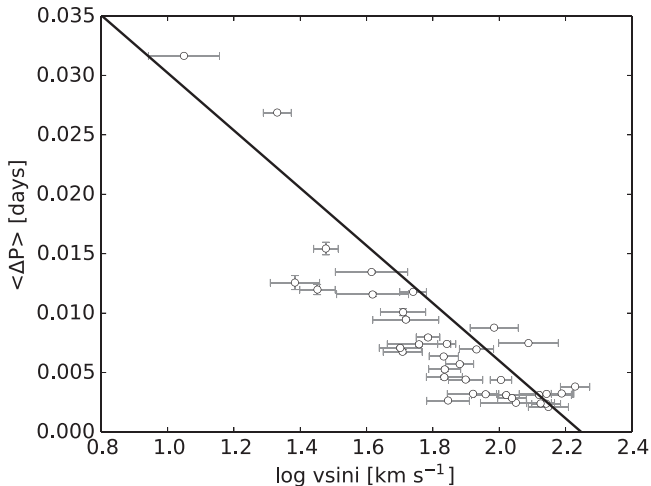


Figure 8. The average period spacing values of the different stars with respect to the logarithm of their $v \sin i$ values.

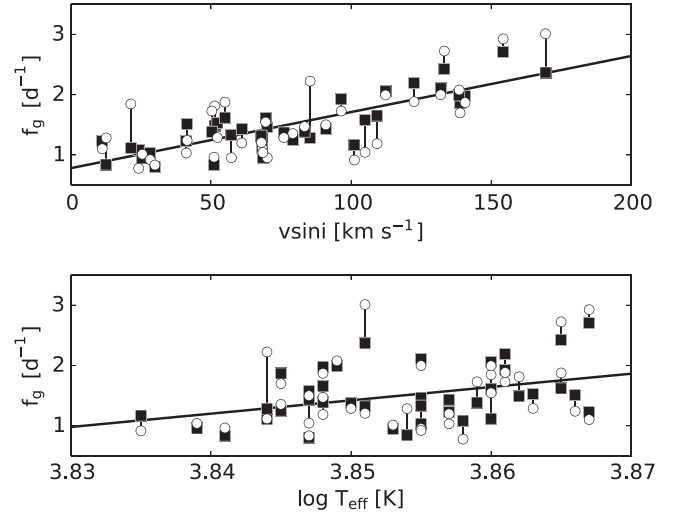


Figure 9. Observed values (white dots) for the dominant frequency f_g , with lines connected to the values predicted by the multivariate models (black squares) described in Table 2 for the rotation velocity $v \sin i$ (top) and the temperature $\log T_{\text{eff}}$ (bottom). The bivariate model fits listed in the left part of Table 2 are shown by the full lines.

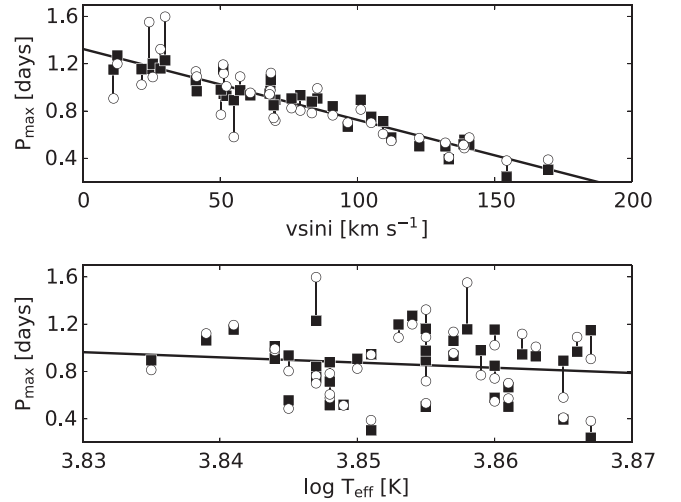


Figure 10. Same as Figure 9, but for the pulsation period P_{\max} instead of the frequency f_g .

line mask was computed. In this study we took the spectral range between 4700 and 5800 Å, which includes the H_β line. For a typical γ Dor star, the Balmer lines are mostly sensitive to T_{eff} (e.g., Gray 1992). By including the H_β line into the spectral fits, we were able to put strong constraints on the values of T_{eff} .

The obtained parameter values are listed in Table 5 and some sample distributions are illustrated in Figure 1. As we can see, T_{eff} typically has a value near 7100 K, while $\log g$ is close to 4.1. The metallicity, $[M/H]$, is on average slightly higher than the solar metallicity, while ζ typically has a value between 2 and 3.5 km s⁻¹. These are in close agreement with the parameters we had chosen for the LSD line mask in Section 3.1. The metallicity values previously computed by Tkachenko et al. (2013a) are on average slightly below the solar value, because ζ was kept fixed at 2 km s⁻¹ in that study, whereas we included it as a free parameter. We also find that most γ Dor stars in our sample are slow to moderate rotators compared to their break-up velocity $v_c = \sqrt{2GM_*/3R_*}$, where M_* and R_* are

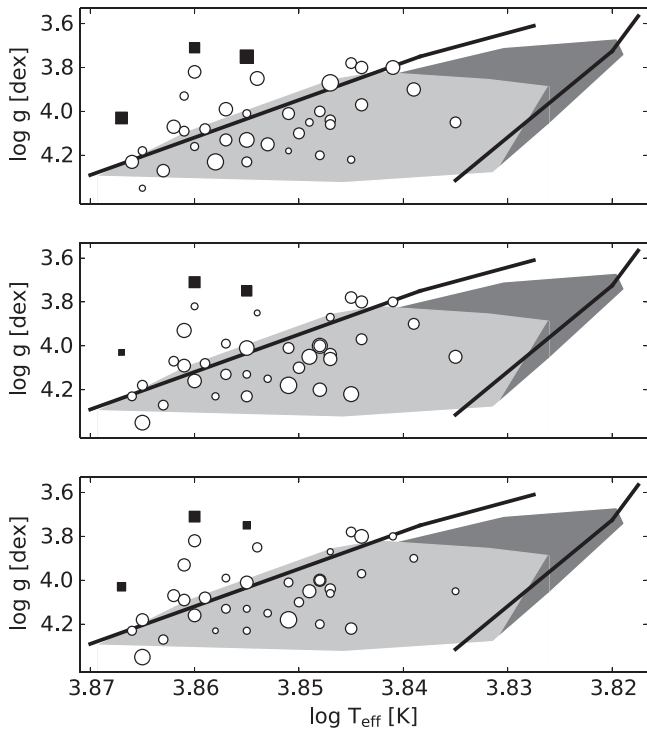


Figure 11. $(\log T_{\text{eff}}, \log g)$ -diagrams with the sample stars for which period spacing patterns were found. The white dots indicate the single stars, whereas the black squares are the single-lined binaries. The full lines mark the instability strip taken from Dupret et al. (2005) (with $\alpha_{\text{MLT}} = 2.0$). The light gray and dark gray areas are the instability strips for the main-sequence γ Dor stars presented by Bouabid et al. (2011), with $\alpha_{\text{ov}} = 0$ and $\alpha_{\text{ov}} = 0.2$ respectively. The marker sizes indicate the longest pulsation period P_{max} in the spacing patterns (top), the rotation velocity $v \sin i$ (middle) and the g -mode frequency f_g with the highest amplitude (bottom).

the stellar mass and radius. For a $1.6 M_{\odot}$ star with a $1.9 R_{\odot}$ radius we find $v_c = 327 \text{ km s}^{-1}$. Typical values for γ Dor stars are all on the order of 300 km s^{-1} .

A comparison of the spectroscopically derived parameters values of T_{eff} , $\log g$, and $[M/H]$ with the values found in the KIC catalog, which are derived from spectral energy distribution fitting, is shown in Figure 2. It is found that, apart from a few outliers, the T_{eff} values in the KIC catalog are reasonably reliable, while the deviations of the surface gravity and metallicity values seem to be correlated to the actual parameter values. This relation is similar to the one found by Tkachenko et al. (2013b).

4. PERIOD SPACING PATTERNS IN THE KEPLER PHOTOMETRY

Having confirmed the γ Dor nature for the vast majority of the targets in our sample and having identified the binaries, we used the extracted pulsation frequencies to look for period spacings by means of the methodology described in Van Reeth et al. (2015). This resulted in the detection of period spacings for 50 of the 67 studied targets. These are listed in Tables 4 and 6. The found spacing patterns are all shown in Figures 12–61 in the Appendix. A selection can also be found in Figures 3–6.

Most of the period spacing patterns have a clear slope. This has been observed before (Bedding et al. 2014; Van Reeth et al. 2015) and is a consequence of frequency shifts due to rotation. Interestingly, most of the detected period spacing patterns seem to be complementary to the ones presented by Bedding et al. (2014). These authors considered slowly rotating stars without spectroscopic confirmation that it actually

concerns F-type stars, while our method is also suitable to detect the period spacing patterns of the moderate to fast rotating stars in our sample. While this difference is clearly visible in the increasingly strong downward slopes of many of the detected patterns, there are also several detected spacing series with an upward slope.

As discussed in Section 1, the period spacing patterns with a downward slope are either prograde or zonal modes. Given that zonal modes are expected to be more susceptible to trapping in an equatorial waveguide under the influence of the Coriolis force (Townsend 2003), we expect most, if not all, of the detected modes to be prograde. According to theory, spacing series with an upward slope correspond to retrograde modes that are shifted in the frequency domain because of the stellar rotation. It is expected that the average period spacing value of retrograde modes increases for higher rotation rates (Bouabid et al. 2013), as found for KIC 11145123 (Kurtz et al. 2014), KIC 9244992 (Saio et al. 2015), and KIC 9751996 (see Figure 3). Nevertheless, for several stars, such as, e.g., KIC 8375138 (see Figure 4), the observed mean period spacing value for the series with the upward slope is smaller than it would be if the star did not rotate. The reason is that for these stars, the rotation frequency is so high the retrograde modes are actually shifted below zero in the inertial reference frame. When observed, pulsation frequencies are assumed to be positive, so that when the retrograde modes are observed, we end up with a spacing pattern such as the one seen in Figure 4. While Bouabid et al. (2013) already mentioned that this might occur, we find this to be fairly common since no less than ten stars with a detected period spacing pattern are fast rotators exhibiting both prograde and retrograde modes. For all of these stars, the retrograde modes have similar characteristic amplitude patterns in the sense that the mode amplitude grows as the pulsation period increases and drops sharply (see Figures 4 and 5). The amplitude comb of KIC 8375138 as seen in Figure 4 reveals dips in the amplitudes in an otherwise monotonically growing period series.

For six other stars in our sample, such as KIC 11668783 illustrated in Figure 6, we find a period spacing pattern connected with retrograde modes only.

Even though many of the observed periods spacing patterns are reasonably smooth, there are also several patterns that show regular dips. This is particularly visible for the pulsation spacing pattern of KIC 2710594, shown in Figure 5. Finally, several of the stars for which we find period spacing patterns are hybrid γ Dor/ δ Sct stars, most notably KIC 8645874, KIC 9751996, and KIC 11754232 (listed in Table 4). Not only are these single stars or single-lined binaries (KIC 11754232), they are also slow rotators and have a relatively rich pulsation spectrum in the δ Sct regime, making them interesting targets to probe the interior stellar rotation profile, as done in Kurtz et al. (2014) and Saio et al. (2015).

5. STATISTICAL ANALYSIS OF THE SAMPLE PROPERTIES

Among the 45 stars for which we found prograde period spacing patterns, 38 are single stars and 3 are single-lined binaries. We have therefore 41 stars for which we have both spectroscopic and pulsational parameters based on period spacings, allowing us to look for possible correlations between their properties and compare those qualitatively with the relations predicted by theory.

In order to properly take into account the characteristics of the period spacing patterns in the analysis, we limited ourselves to the patterns with a downward slope, because these are by far the most frequently detected. We derived various quantities from them, as illustrated in Figure 7. The mean pulsation period of the g -modes that are part of the found series is denoted as $\langle P \rangle$, while $\langle \Delta P \rangle$ is the mean spacing value of the pattern. In addition, we have the mean derivative $d(\Delta P)/dP$ of the pattern, which is actually computed from a fitted 2nd order polynomial (shown in red in Figure 7) as this allows us to avoid the influence of any irregularities or dips in the spacing series.

We also took into account the parameter Δ_{res} , which is a measure of the residuals of the polynomial fit to the period spacing series as a proxy of the smoothness of the found pattern. The parameter P_{max} , on the other hand, is the longest detected pulsation period of the downward spacing pattern. We here consider it to be indicative of the cut-off frequency for which the radiative damping of the pulsations in the g -mode cavity becomes dominant over the excitation (Dupret et al. 2005; Bouabid et al. 2013). In general, it is the interplay between the non-adiabatic excitation and damping, taking into account advective damping due to wave leakage caused by the Coriolis force, that determines whether a mode will be excited to detectable amplitude or not (Townsend 2000). The observed quantity P_{max} is therefore not only of interest to deduce the boundaries of the γ Dor instability strip, but also to derive the physical conditions that determine the delicate balance between damping and excitation of the modes.

The other included parameters in our analysis are the frequency f_g and the amplitude A_g of the dominant g -mode as well as the obtained spectroscopic stellar parameters. While it would have been valuable to also include the frequency f_p and the amplitude A_p of the δ Sct p -mode with the highest amplitude or a proxy for the acoustic cutoff frequency for the hybrid γ Dor/ δ Sct stars, there are not enough hybrids in the sample for a meaningful statistical analysis based on these quantities. Similarly, the number of sample stars with retrograde modes is also too small for such a study.

We looked for linear relations between the different established parameters, where we took the logarithm for those quantities whose range is two or more orders of magnitude. These are the twelve parameters listed in Tables 5 and 6 for the 41 stars with a downward period spacing pattern. We performed several multivariate analyses, each time choosing one of the available parameters as the dependent variable Y and taking the others as covariates X_i . In order to make sure that there was no offset in the parameter relation, we subtracted the mean values of all the parameters prior to the regression analysis. The latter was based on forward selection and backward elimination (e.g., Aerts et al. 2014 for a similar application). With the forward selection method, we add covariates one at a time as long as their addition implies a significantly better model fit, starting with the one showing the strongest correlation with the chosen dependent variable. In the case of the backward elimination, we start with all covariates under study and remove those showing insignificant correlation with the dependent variable. The significance tests for each individual covariate were done using a t -test, while the evaluation of each step of the fit was based on the coefficient of determination R^2 , i.e., the fraction of the variance of the dependent variable explained by the model. A summary of the multiple regression results is provided in Table 2.

The clearest result from these analyses is the strong correlation between the stellar rotation and the found period spacing, as predicted by theory (Bouabid et al. 2013) and already discussed in Sections 1 and 4. The faster a star is rotating, the larger the rotational shifts of the pulsation frequencies, which for prograde modes translates into a period spacing pattern with a steeper downward slope and consisting of more closely spaced, shorter pulsation periods. The bivariate relation between the mean period spacing and $\log(\nu \sin i)$ is shown in Figure 8.

Second, we found that the value of dominant mode frequency, f_g , is strongly correlated with the values of $\nu \sin i$ and $\log T_{\text{eff}}$, as shown in Figure 9. As listed in Table 2, the R^2 value we obtain for the bivariate model based on f_g and $\nu \sin i$ is 0.468. When we include $\log T_{\text{eff}}$ as well, the value of R^2 increases to 0.665 for the trivariate model fit, given by

$$f_g = 30.9(6.6) \cdot \log T_{\text{eff}} + 0.0103(0.0013) \cdot \nu \sin i - 118.23(0.32),$$

where the frequency f_g is expressed in d^{-1} , T_{eff} in Kelvin and $\nu \sin i$ in km s^{-1} . The relation was found for both the forward and the backward modeling and is clearly appropriate. However, there are two unknowns causing variance in this trivariate model that we cannot take into account at present: the inclination angle i of the star and the spherical degree l of the pulsation modes. This may explain some of the scatter in Figure 9.

It is noteworthy that the trend between f_g and $\log T_{\text{eff}}$ is opposite to the one found for B-type g -mode pulsators, which do not have an outer convective envelope and are, in general, slower rotators than the sample we studied here (De Cat & Aerts 2002; Aerts et al. 2014). However, the two correlations are not directly comparable because the instability strip of SPB stars is much more extended along the main sequence than the γ Dor instability strip. The latter is confined to a much more narrow $\log T_{\text{eff}}$ range than the SPB instability region. Therefore the main contributor to the abovementioned trend for γ Dor stars is the stellar radius, whereas this is the initial mass for SPB pulsators.

We also found a bivariate relation between f_g and ζ . This is not surprising because the overall pulsational line broadening, which is dominated by the mode with frequency f_g , is captured by ζ . Indeed, we could not perform line-profile modeling due to the individual pulsation modes as it would require time-resolved spectroscopy covering the phases of each and every g -mode (e.g., Aerts et al. 2010, Chapter 6). Hence, the overall pulsational broadening is included in the simple broadening function parametrized with ζ (Cf. Morel et al. 2006).

Finally, we also found a bivariate relation between f_g and $\langle P \rangle$, which indicates that the period spacing patterns are typically found in frequency regions around the dominant g -mode frequency.

The correlations between f_g and the other variables also apply to P_{max} to almost the same extent, as can be seen in Table 2 and as illustrated in Figure 10. The main difference is that the correlation between P_{max} and $\nu \sin i$ is stronger than between f_g and $\nu \sin i$, while the correlation with $\log T_{\text{eff}}$ is weaker. Thus, rotation seems to have a larger impact on the period P_{max} than on the frequency of the dominant mode.

6. DISCUSSION AND CONCLUSIONS

This paper offers an observational asteroseismic analysis of 67 of the γ Dor stars in the sample presented by Tkachenko

et al. (2013a). Thanks to the available combination of *Kepler* photometry and ground-based high-resolution spectroscopy, we were able to carry out a detailed statistical analysis. We found 13 of the 67 stars to be members of a binary system. We computed the stellar parameters for all 67 stars in the sample and found them to be consistent with the typical values expected for γ Dor stars. Most of the stars in our sample are slow to moderate rotators with respect to their breakup velocity.

For 50 stars in the sample we were able to detect period spacings using the methodology described by Van Reeth et al. (2015). The found spacing patterns are in line with theoretical expectations (Miglio et al. 2008; Bouabid et al. 2013). For several of the stars we detected periodic dips in the period spacing versus period relations, as predicted by Miglio et al. (2008). These dips are caused by the presence of a chemical gradient near the edge of the convective core. For many of the sample stars, the period spacing patterns are smooth, pointing either to extremely young stars or, more likely, to the presence of mixing processes inside the star that have washed out the chemical gradient. A priori one could expect to see a correlation between the smoothness of the period spacing patterns and the observed rotation velocity. In this paper, such a correlation would be reflected between the values of Δ_{res} and $v \sin i$, but we could not find a significant relation between the two parameters. It is likely that, if such a correlation exists, the uncertainties on the values of Δ_{res} are too large.

In order to determine the precise cause of the smooth patterns, detailed forward seismic modeling is required for each individual star. In addition, each of the found spacing patterns reveals a clear slope. This is as predicted theoretically and points toward frequency shifts of the g -modes due to rotational effects, resulting in a downward or upward slope for prograde and retrograde modes, respectively.

Our results based on the *Kepler* time series photometry were further confronted with the spectroscopic parameters of the pulsators. We searched for correlations between the seismic quantities for the stars exhibiting period spacing patterns with a downward slope, since only these constitute a large enough sample to perform multivariate linear regressions. We found a strong correlation between $v \sin i$ and the average period spacing, confirming the influence of rotation on γ Dor-type pulsations as predicted by theory. In addition, we found a correlation between the dominant g -mode frequency and both $v \sin i$ and $\log T_{\text{eff}}$. Similarly, P_{max} correlates with $v \sin i$ and $\log T_{\text{eff}}$.

While our sample contains only 11 hybrid γ Dor/ δ Sct pulsators, these constitute an interesting sub-sample for various reasons. First, seven of these stars were found to be in a binary. At least four of them contain a hybrid pulsator as three were identified as single-lined binaries, while in the case of KIC 3952623 the observed γ Dor and δ Sct variability originates from the primary component.

Two of the single stars (KIC 8645874 and KIC 9751996) and one of the single-lined binaries (KIC 11754232) were found to be slow rotators. Interestingly, some of the recently studied hybrid γ Dor pulsators are also very slow rotators (Bedding et al. 2014; Kurtz et al. 2014; Saio et al. 2015). On the other hand, the hybrid star KIC 4749989 is a fast rotator, similar to KIC 8054146 (e.g., Breger et al. 2012).

We compared the locations of the sample stars in the Kiel diagram with the γ Dor instability strips determined by Dupret et al. (2005) and Bouabid et al. (2011; as shown in Figure 11).

Given the large uncertainties on $\log g$, the positions are compatible with the strips, although most of our sample stars clearly cluster around the blue edge. The symbol sizes in these plots indicate the longest pulsation period P_{max} in the spacing patterns (top), the rotation velocity $v \sin i$ (middle) and the g -mode frequency f_g with the largest amplitude (bottom). The quantity P_{max} is of interest to understand γ Dor instability, in the sense that modes with even longer period are more sensitive to radiative damping and/or wave energy leakage.

While we found a correlation between f_g as well as P_{max} and $\log T_{\text{eff}}$ in Section 5, this is not obvious from the figure because of the strong influence of $v \sin i$ on these two quantities and due to the large errors of $\log g$. We do see from the symbol sizes that a higher rotation velocity typically correlates with a higher frequency f_g and a lower period P_{max} , as found from the forward and backward modeling.

Our sample study constitutes a very rich observational data base to pursue forward asteroseismic modeling of γ Dor stars. All the necessary data to perform such stellar modeling is provided to the community through <https://fys.kuleuven.be/ster/Projects/gamma-doradus>.

The research leading to these results was based on funding from the Fund for Scientific Research of Flanders (FWO), Belgium under grant agreement G.0B69.13, from the European Communitys Seventh Framework Programme FP7-SPACE-2011-1 project number 312844 (SPACEINN), from the Research Council of KU Leuven under grant GOA/2013/012, and from the National Science Foundation of the USA under grant No. NSF PHY11-25915. K.Z. acknowledges support by the Austrian Fonds zur Förderung der wissenschaftlichen Forschung (FWF, project V431-NBL). S.B. is supported by the Foundation for Fundamental Research on Matter (FOM), which is part of the Netherlands Organisation for Scientific Research (NWO). T.V.R. thanks Aaron Greenwood (University of Groningen, the Netherlands) for the very useful discussions on the interaction of rotation and pulsations in γ Dor stars. C.A., S.B., P.P., and V.S.S. are grateful to the Kavli Institute of Theoretical Physics at the University of California, Santa Barbara, for the kind hospitality during the research programme “Galactic Archaeology and Precision Stellar Astrophysics” during which the current study was finalized. Funding for the *Kepler* mission is provided by NASA’s Science Mission Directorate. We thank the whole team for the development and operations of the mission. This research made use of the SIMBAD database, operated at CDS, Strasbourg, France, and the SAO/NASA Astrophysics Data System. This research has also made use of the VizieR catalog access tool, CDS, Strasbourg, France, and of the VALD database, operated at Uppsala University, the Institute of Astronomy RAS in Moscow, and the University of Vienna.

APPENDIX DETECTED PERIOD SPACING PATTERNS

Below we provide figures (Figures 12–61) of all the detected period spacing patterns for the sample stars. The symbols used are the same as the ones used in Figure 3 of the main text.

Table 3
Observation Log of the Stars in Our Sample

KIC	R.A. (J2000)	Decl. (J2000)	m_V	N_Q	Available Quarters	N_S	Spectroscopic Observation Times
2710594	19 23 33.317	+37 59 00.55	11.79	18	0–17	4	2011 May–Aug
3222854	19 11 38.539	+38 20 43.83	12.5	18	0–17	7	2013 Aug, 2014 Jul–Sep
3448365	19 30 35.779	+38 35 16.67	9.92	18	0–17	4	2011 May–Aug
3744571	19 23 05.597	+38 48 51.91	12.03	18	0–17	4	2013 Jun–Jul
3952623	19 24 08.225	+39 00 40.25	12.09	18	0–17	14	2013 May–Jul, 2014 Jul–Aug
4547348	19 08 18.888	+39 41 36.53	11.78	18	0–17	4	2011 May–Aug
4749989	19 31 05.251	+39 52 24.78	9.64	15	0–5, 7–9, 11–13, 15–17	2	2011 May–Jun
4757184	19 38 36.922	+39 50 26.10	11.7	8	0–1, 11–13, 15–17	5	2011 May–Aug
4846809	19 39 19.027	+39 55 10.70	12.36	15	0–5, 7–9, 11–13, 15–17	4	2013 Jun–Jul
5000454	19 13 53.400	+40 10 44.76	13.56	17	1–17	3	2013 Jun–Jul
5114382	19 42 43.543	+40 15 00.66	11.55	8	0–1, 11–13, 15–17	4	2011 Jul–Aug
5254203	18 56 08.364	+40 27 12.87	12.92	14	0–4, 6–8, 10–12, 14–16	4	2013 Aug, 2014 Jun–Jul
5350598	19 11 54.360	+40 34 01.78	12.1	18	0–17	4	2013 Jun–Jul
5522154	19 12 23.386	+40 42 14.00	10.44	10	0–1, 10–17	3	2011 May–Jun
5708550	19 31 03.494	+40 56 13.89	11.93	18	0–17	4	2011 Jul–Aug
5772452	19 00 04.541	+41 05 17.20	12.46	14	0–4, 6–8, 10–12, 14–16	2	2013 Aug–Sep
5788623	19 24 11.066	+41 00 41.47	12.07	18	0–17	4	2013 Jun–Jul
6185513	18 57 29.040	+41 30 58.10	11.89	8	0–1, 10–12, 14–16	4	2011 May
6342398	18 51 34.322	+41 46 35.05	12.37	14	0–4, 6–8, 10–12, 14–16	4	2013 May–Jun
6367159	19 31 21.144	+41 44 55.50	12.6	18	0–17	8	2013 Aug–Sep, 2014 Jun–Aug
6425437	19 00 03.295	+41 50 16.36	11.48	14	0–4, 6–8, 10–12, 14–16	3	2011 May
6467639	19 53 37.829	+41 49 05.02	12.02	18	0–17	12	2013 Jun–Jul, 2014 Jul–Aug
6468146	19 54 04.241	+41 48 31.01	9.96	18	0–17	4	2011 Jul, 2014 Jun–Aug
6468987	19 54 49.006	+41 48 13.54	12.67	18	0–17	4	2013 Aug, 2014 Jun–Aug
6678174	19 10 05.712	+42 09 54.58	11.74	10	0–1, 10–17	4	2011 May–Aug
6778063	19 28 06.622	+42 15 29.60	12.18	18	0–17	9	2013 Jun–Jul, 2014 Jul–Aug
6935014	19 08 39.984	+42 27 11.77	10.91	18	0–17	5	2011 May–Jun
6953103	19 32 51.240	+42 28 46.53	12.56	18	0–17	4	2013 Aug–Sep, 2014 Jun–Aug
7023122	19 13 42.062	+42 31 13.02	10.84	18	0–17	4	2011 May–Jul
7365537	19 30 35.237	+42 58 10.69	9.19	18	0–17	3	2011 May
7380501	19 46 41.587	+42 59 35.34	11.98	18	0–17	4	2011 Jul–Aug
7434470	19 13 57.941	+43 04 57.98	12.02	18	0–17	4	2013 Jun–Jul
7516703	19 12 48.742	+43 11 54.34	12.51	13	1–3, 6–7, 10–17	2	2013 Aug–Sep
7583663	18 46 57.458	+43 16 15.31	12.69	18	0–17	4	2013 Aug, 2014 Jun–Jul
7691618	19 39 02.666	+43 19 01.20	12.36	18	0–17	4	2013 Jun–Jul
7746984	19 18 45.175	+43 24 01.54	12.47	10	0–1, 3, 5, 7, 9, 11, 13, 15, 17	2	2013 Aug
7867348	18 40 40.774	+43 36 17.09	10.84	18	0–17	12	2011 May, 2014 Jun–Aug
7939065	18 49 11.976	+43 47 53.52	12.14	18	0–17	4	2013 May–Jun
8364249	19 25 16.824	+44 23 46.75	11.95	18	0–17	4	2011 Jul–Aug
8375138	19 40 47.623	+44 20 11.83	11.02	18	0–17	4	2011 May–Aug
8378079	19 44 30.607	+44 22 58.04	11.84	18	0–17	3	2011 Aug
8611423	19 03 12.216	+44 44 35.05	11.59	10	0–1, 10–17	4	2011 May–Jun
8645874	19 53 51.715	+44 43 09.37	9.92	10	0–1, 10–17	2	2011 Jul
8693972	19 34 44.590	+44 52 24.03	12.81	18	0–17	7	2013 Aug–Sep, 2014 Jul–Aug
8739181	19 00 06.043	+44 56 43.47	12.08	18	0–17	5	2013 Jun–Jul
8836473	19 51 12.305	+45 01 34.10	12.78	18	0–17	4	2013 Aug, 2014 Jun–Aug
9210943	19 14 04.512	+45 39 08.99	11.81	18	0–17	5	2011 May–Aug, 2014 Jun–Aug
9419694	19 49 57.994	+45 57 07.09	12.74	15	0–6, 8–10, 12–14, 16–17	4	2013 Aug, 2014 Jun–Aug
9480469	19 49 34.555	+46 04 20.90	12.78	15	0–6, 8–10, 12–14, 16–17	5	2013 Aug–Sep, 2014 Jun–Aug
9595743	19 39 19.226	+46 14 57.49	12.09	11	0–1, 5, 10–17	4	2013 Jun–Jul
9751996	18 45 59.486	+46 30 43.23	10.96	10	0–1, 10–17	4	2011 May
10080943	19 36 27.305	+47 05 02.29	11.81	18	0–17	27	2011 Aug, 2013 May–Jul, 2014 Jul–Oct
10224094	19 50 06.643	+47 17 06.58	11.9	15	0–6, 8–10, 12–14, 16–17	4	2011 Jul–Aug
10256787	18 53 47.189	+47 23 35.01	12.25	18	0–17	14	2013 May–Jun, 2014 Jun–Aug
10467146	19 22 06.050	+47 40 49.33	12.66	18	0–17	4	2013 Aug–Sep, 2014 Jun–Aug
11080103	19 18 50.141	+48 37 13.90	12.94	18	0–17	4	2013 Aug–Sep, 2014 Jun–Aug
11099031	19 52 37.514	+48 38 44.01	10.02	15	0–6, 8–10, 12–14, 16–17	4	2011 Jul
11196370	19 38 44.486	+48 50 55.64	12.71	18	0–17	2	2013 Aug–Sep
11294808	19 22 45.396	+49 04 47.53	11.73	18	0–17	4	2011 May–Aug
11456474	19 30 10.495	+49 20 28.06	12.49	18	0–17	4	2013 Aug–Sep, 2014 Jun–Aug
11668783	19 41 27.422	+49 47 41.24	12.58	18	0–17	4	2013 Aug–Sep, 2014 Jun–Aug

Table 3
(Continued)

KIC	R.A. (J2000)	Decl. (J2000)	m_V	N_Q	Available Quarters	N_S	Spectroscopic Observation Times
11721304	19 43 27.847	+49 51 25.41	11.71	18	0–17	4	2011 Jul–Aug
11754232	19 05 57.926	+49 56 33.53	12.24	8	0–1, 10–11, 13–15, 17	13	2013 Jun–Jul, 2014 Jun–Aug
11826272	19 49 50.494	+50 00 57.36	10.21	18	0–17	3	2011 May–Aug
11907454	19 11 29.407	+50 14 29.72	11.38	18	0–17	4	2011 May–Aug
11917550	19 34 22.565	+50 15 46.29	11.12	18	0–17	4	2011 May–Aug
11920505	19 39 57.108	+50 13 32.09	9.88	18	0–17	2	2011 May
12066947	19 37 03.209	+50 30 20.41	10.23	10	0–1, 10–17	3	2011 May–Jul
12458189	19 20 49.123	+51 20 09.25	11.46	18	0–17	4	2011 May–Aug
12643786	19 13 49.205	+51 46 48.32	11.52	18	0–17	4	2011 May–Aug

Note. N_Q and N_S indicate the total number of available *Kepler* mission quarters and HERMES spectra, respectively.

Table 4
The Global Observational Characteristics of the Stars in Our Sample

KIC	Class	Binarity	Period Spacings	Comments
2710594	γ Dor	S	yes	Prograde and retrograde
3222854	γ Dor	SB2	no	...
3448365	γ Dor	S	yes	Prograde and retrograde
3744571	γ Dor	S	no	...
3952623	γ Dor/ δ Sct hybrid	SB2	no	...
4547348	γ Dor	S	no	...
4749989	γ Dor/ δ Sct hybrid	S	no	...
4757184	γ Dor	S	yes	Retrograde (quadrupole)
4846809	γ Dor	S	yes	Prograde (dipole and quadrupole)
5000454	γ Dor	S	no	...
5114382	γ Dor	S	yes	Prograde and retrograde
5254203	γ Dor	S	no	...
5350598	γ Dor	S	yes	Retrograde (quadrupole)
5522154	γ Dor ^a	S	yes	Prograde
5708550	γ Dor	S	yes	Prograde
5772452	K-type (ROT)
5788623	γ Dor	S	yes	Prograde
6185513	γ Dor ^a	S	yes	Retrograde (quadrupole)
6342398	γ Dor	S	no	...
6367159	γ Dor/ δ Sct hybrid	SB2	no	...
6425437	γ Dor	S	yes	Retrograde (quadrupole)
6467639	γ Dor/ δ Sct hybrid	SB3	no	...
6468146	γ Dor/ δ Sct hybrid	SB1	yes	Prograde
6468987	γ Dor	S	yes	Prograde and retrograde
6678174	γ Dor	S	yes	Prograde
6778063	γ Dor/ δ Sct hybrid	SB3	yes	Prograde
6935014	γ Dor	S	yes	Prograde
6953103	γ Dor	S	yes	Prograde
7023122	γ Dor	S	yes	Prograde
7365537	γ Dor ^a	S	yes	Prograde
7380501	γ Dor	S	yes	Prograde
7434470	γ Dor ^a	S	yes	Prograde and strong rotation frequency
7516703	K-type (ROT)
7583663	γ Dor	S	yes	Prograde and retrograde
7691618	γ Dor	S	no	...
7746984	γ Dor	SB	yes	Prograde
7867348	γ Dor/ δ Sct hybrid	SB1	yes	Retrograde (quadrupole)
7939065	γ Dor ^a	S	yes	Prograde
8364249	γ Dor	S	yes	Prograde
8375138	γ Dor ^a	S	yes	Prograde and retrograde
8378079	γ Dor	S	no	...
8611423	γ Dor	S	no	...

Table 4
(Continued)

KIC	Class	Binarity	Period Spacings	Comments
8645874	γ Dor/ δ Sct hybrid	S	yes	Prograde
8693972	γ Dor	SB2	no	...
8739181	γ Dor	S	no	...
8836473	γ Dor/ δ Sct hybrid	S	yes	Prograde
9210943	γ Dor	SB	yes	Prograde and retrograde
9419694	γ Dor	S	yes	Prograde
9480469	γ Dor	S	yes	Prograde and retrograde
9595743	γ Dor	S	yes	Prograde
9751996	γ Dor/ δ Sct hybrid	S	yes	Prograde, retrograde and zonal
10080943	γ Dor/ δ Sct hybrid	SB2
10224094	γ Dor	S	yes	Prograde
10256787	γ Dor	SB	yes	Prograde
10467146	γ Dor	SB1	yes	Prograde
11080103	γ Dor	S	yes	Prograde
11099031	γ Dor ^a	S	yes	Prograde
11196370	γ Dor ^a	S	no	...
11294808	γ Dor ^a	S	yes	Prograde (dipole and quadrupole)
11456474	γ Dor	S	yes	Prograde
11668783	γ Dor	S	yes	Retrograde
11721304	γ Dor	S	yes	Prograde
11754232	γ Dor/ δ Sct hybrid	SB1	yes	Prograde
11826272	γ Dor	S	yes	Prograde
11907454	γ Dor	S	yes	Prograde and retrograde
11917550	γ Dor	S	yes	Prograde
11920505	γ Dor	S	yes	Prograde
12066947	γ Dor ^a	S	yes	Prograde and retrograde
12458189	γ Dor ^a	S	yes	Prograde
12643786	γ Dor	S	no	...

Note. We have listed information on the variability type, where the label “ROT” indicates rotational modulation, and a indicates that frequencies are found outside of the traditional range for γ dor stars, but likely correspond to combination frequencies. In Addition, stars are listed as single (S), single-lined binaries (SB1), double-lined binaries (SB2), binaries with no detected radial velocity variations (SB) and triple systems (SB3). We also report the detections of period spacing patterns and comment on their suspected nature.

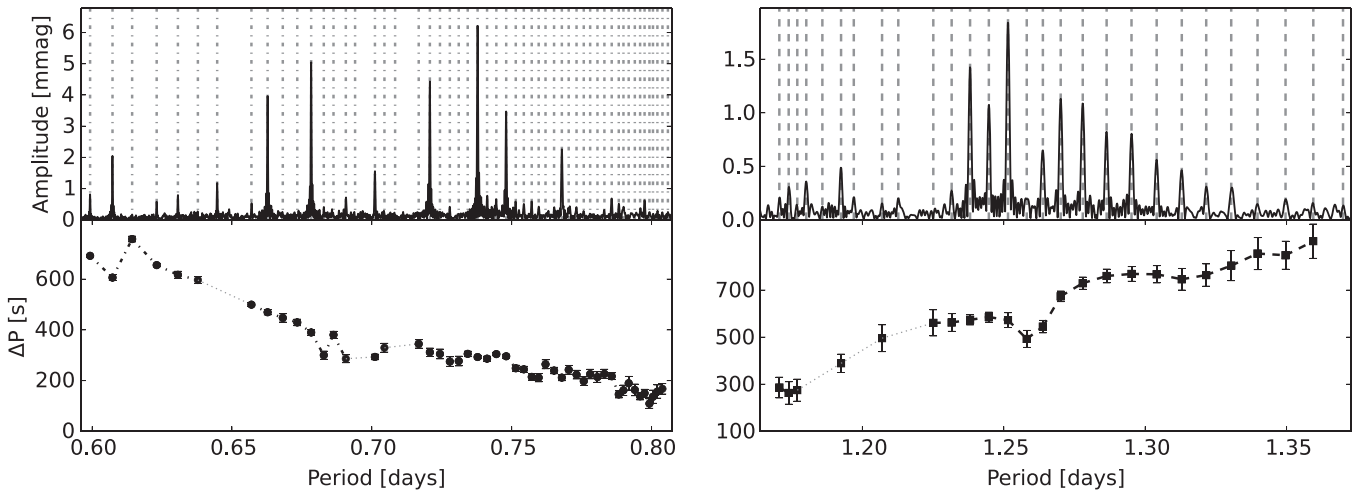
**Figure 12.** The period spacing patterns of KIC 2710594.

Table 5
Spectroscopic Parameter Values Computed for the Merged Spectra of the Single Stars and Single-lined Binaries in Our Sample

KIC	log T_{eff} (K)	$\sigma_{\log T_{\text{eff}}}$	T_{eff} (K)	$\sigma_{T_{\text{eff}}}$	log g	$\sigma_{\log g}$	ζ (km s ⁻¹)	σ_{ζ}	$v \sin i$ (km s ⁻¹)	$\sigma_{v \sin i}$	[M/H]	$\sigma_{[M/H]}$
2710594	3.845	0.006	7000	100	3.78	0.33	2.93	0.42	79.2	4.1	0.11	0.09
3448365	3.847	0.004	7030	60	4.04	0.22	2.52	0.26	91.0	3.0	0.05	0.07
3744571	3.850	0.008	7075	130	3.94	0.40	2.47	0.58	52.5	4.0	0.11	0.11
4547348	3.850	0.006	7080	105	4.02	0.34	2.54	0.44	68.5	4.0	0.10	0.09
4749989	3.865	0.003	7320	55	4.24	0.21	3.33	0.22	204.0	8.0	0.13	0.06
4757184	3.862	0.008	7285	135	4.16	0.43	1.90	0.63	36.0	3.0	0.02	0.13
4846809	3.862	0.008	7280	135	4.07	0.32	3.00	0.59	51.3	3.5	0.18	0.11
5000454	3.840	0.006	6920	100	3.46	0.38	3.91	0.50	101.0	4.4	0.07	0.10
5114382	3.855	0.007	7165	120	4.23	0.37	2.45	0.45	70.1	4.5	0.19	0.10
5254203	3.866	0.014	7350	235	4.09	0.72	3.11	1.10	42.7	6.0	0.21	0.21
5350598	3.864	0.007	7315	110	4.11	0.33	2.64	0.42	27.8	1.7	0.10	0.09
5522154	3.851	0.004	7090	70	4.18	0.26	3.15	0.36	169.4	7.5	0.08	0.08
5708550	3.844	0.006	6990	100	3.97	0.32	2.44	0.42	68.3	3.7	0.15	0.09
5788623	3.858	0.007	7210	115	4.23	0.32	2.20	0.40	24.2	1.8	0.09	0.09
6185513	3.867	0.007	7365	120	4.10	0.40	3.91	0.72	82.9	5.5	0.16	0.11
6342398	3.855	0.010	7165	165	3.95	0.49	2.61	0.60	31.6	2.9	0.17	0.13
6425437	3.848	0.007	7045	112	3.88	0.35	2.64	0.43	49.7	2.5	0.21	0.09
6468146	3.860	0.004	7240	65	3.71	0.22	3.56	0.33	69.5	1.9	-0.05	0.06
6468987	3.855	0.013	7155	210	4.01	0.72	4.08	1.10	132.0	12.8	0.38	0.20
6678174	3.852	0.006	7105	90	3.77	0.33	2.59	0.35	45.5	2.3	0.02	0.08
6935014	3.851	0.004	7090	66	4.01	0.22	2.66	0.32	68.0	3.0	0.14	0.07
6953103	3.863	0.010	7290	175	4.27	0.50	2.50	0.81	52.3	5.2	0.25	0.15
7023122	3.865	0.005	7335	82	4.18	0.30	2.81	0.43	55.0	2.2	0.04	0.08
7365537	3.867	0.004	7360	65	4.48	0.23	3.23	0.26	154.3	4.9	0.11	0.05
7380501	3.841	0.007	6930	110	3.80	0.35	2.33	0.47	51.1	3.0	0.14	0.10
7434470	3.845	0.009	7005	150	4.22	0.50	3.33	0.90	138.9	11.5	0.25	0.14
7583663	3.847	0.014	7030	230	4.06	0.66	3.38	1.20	105.0	11.0	0.42	0.20
7691618	3.852	0.009	7110	150	4.10	0.45	2.33	0.62	43.3	3.5	0.15	0.13
7867348	3.847	0.005	7030	75	3.56	0.22	2.94	0.20	17.2	1.0	-0.06	0.06
7939065	3.861	0.009	7265	145	4.09	0.48	3.38	0.78	96.5	7.0	0.24	0.13
8364249	3.848	0.007	7045	115	4.00	0.46	3.36	0.55	140.7	8.5	0.17	0.11
8375138	3.849	0.005	7070	80	4.05	0.34	3.14	0.40	138.6	6.0	0.08	0.08
8378079	3.845	0.011	7000	170	3.31	0.55	1.75	0.47	11.7	1.2	-0.14	0.14
8611423	3.853	0.006	7135	105	4.21	0.30	1.86	0.34	20.7	1.5	0.10	0.08
8645874	3.860	0.005	7240	90	3.82	0.27	3.38	0.31	21.4	0.9	-0.05	0.06
8739181	3.848	0.007	7055	120	3.59	0.40	2.24	0.44	27.4	1.8	-0.02	0.10
8836473	3.861	0.011	7260	190	3.93	0.60	4.71	1.00	122.5	11.0	0.37	0.20
9419694	3.857	0.011	7200	185	3.99	0.58	2.50	0.77	41.2	4.5	0.17	0.16
9480469	3.860	0.014	7250	240	4.16	0.70	3.74	1.25	112.3	12.0	0.59	0.25
9595743	3.859	0.008	7230	125	4.08	0.40	2.44	0.59	50.3	3.2	0.14	0.10
9751996	3.854	0.006	7145	100	3.85	0.24	3.07	0.27	12.6	0.9	0.28	0.07
10224094	3.853	0.006	7130	100	4.15	0.30	2.25	0.39	25.5	1.5	0.07	0.08
10467146	3.855	0.011	7155	175	3.75	0.60	2.85	0.80	57.3	5.5	0.12	0.15
11080103	3.866	0.012	7345	210	4.23	0.65	2.80	0.95	41.5	4.5	0.18	0.18
11099031	3.835	0.004	6835	70	4.05	0.20	2.60	0.20	101.2	3.3	0.20	0.05
11196370	3.861	0.013	7260	215	4.05	0.55	2.75	0.68	16.0	2.0	0.26	0.16
11294808	3.844	0.006	6975	95	3.80	0.35	2.95	0.44	85.4	4.4	0.12	0.09
11456474	3.848	0.010	7040	160	4.00	0.50	3.21	0.79	83.4	6.5	0.20	0.14
11668783	3.845	0.009	7000	150	4.00	0.43	2.31	0.52	33.5	2.7	0.19	0.12
11721304	3.855	0.005	7160	82	4.13	0.28	2.15	0.33	28.3	1.5	0.08	0.08
11754232	3.867	0.007	7360	120	4.03	0.33	2.40	0.38	11.2	1.2	-0.05	0.09
11826272	3.847	0.004	7030	70	3.87	0.21	2.37	0.21	30.0	1.1	0.09	0.06
11907454	3.848	0.006	7040	90	4.20	0.32	2.45	0.27	109.3	4.7	0.16	0.08
11917550	3.850	0.005	7080	75	4.10	0.24	2.61	0.32	76.0	3.2	0.14	0.07
11920505	3.857	0.004	7200	60	4.13	0.19	2.55	0.19	61.0	2.2	0.10	0.05
12066947	3.865	0.004	7330	70	4.35	0.30	3.40	0.33	133.3	5.6	0.09	0.07
12458189	3.839	0.006	6895	90	3.90	0.31	2.62	0.39	68.5	3.3	0.16	0.09
12643786	3.857	0.006	7200	95	4.00	0.31	2.63	0.45	76.7	4.5	0.11	0.09

Note. The provided errors are the 1- σ values obtained from the χ^2 -statistics.

Table 6
The Values of Pulsation Parameters and Their Error Margins Derived from the Downward Period Spacing Patterns for the Multivariate Analysis (see Section 5)

KIC	$\langle P \rangle$ (days)	σ_P	$\langle \Delta P \rangle$ (days)	$\sigma_{\Delta P}$	$\left\langle \frac{d\Delta P}{dP} \right\rangle$	$\sigma_{\frac{d\Delta P}{dP}}$	f_g (d^{-1})	σ_{f_g}	A_g (mmag)	σ_{A_g}	Δ_{res}	$\sigma_{\Delta_{\text{res}}}$	P_{max} (days)	$\sigma_{P_{\text{max}}}$
2710594	0.710059	0.000106	0.004405	0.000129	-0.025	0.006	1.35536	0.00004	6.16	0.71	0.81	2.02	0.80391	0.00017
3448365	0.708845	0.000131	0.003169	0.000137	-0.017	0.026	1.50016	0.00004	7.57	0.75	0.45	6.89	0.76368	0.00016
4846809	0.920973	0.000197	0.010070	0.000287	-0.010	0.006	1.81324	0.00004	2.53	0.29	1.82	1.21	1.11765	0.00035
5114382	0.670536	0.000096	0.002642	0.000098	-0.025	0.022	0.95265	0.00006	3.21	0.53	0.89	5.39	0.71833	0.00014
5522154	0.352971	0.000009	0.003819	0.000008	-0.052	0.010	3.00986	0.00002	1.58	0.10	0.31	0.15	0.38857	0.00002
5708550	0.832343	0.000123	0.004606	0.000158	-0.022	0.003	1.11550	0.00005	2.71	0.39	1.30	2.12	0.97390	0.00015
5788623	1.133749	0.000558	0.012569	0.000590	-0.015	0.002	0.77895	0.00007	9.44	1.84	1.97	2.67	1.55211	0.00104
6468146	0.608196	0.000056	0.007406	0.000084	-0.035	0.008	1.54570	0.00001	1.15	0.04	1.18	0.85	0.74142	0.00012
6468987	0.476347	0.000058	0.003106	0.000105	-0.038	0.017	1.99899	0.00002	4.52	0.18	0.19	0.76	0.53144	0.00001
6678174	0.917967	0.000103	0.013403	0.000171	-0.015	0.542	1.12777	0.00007	3.00	0.59	3.02	55.65	0.95240	0.00010
6935014	0.832490	0.000104	0.006348	0.000111	-0.025	0.005	1.20670	0.00005	5.73	0.79	1.88	3.21	0.94147	0.00030
6953103	0.812258	0.000173	0.009450	0.000148	-0.031	0.004	1.28760	0.00004	33.46	3.23	1.44	1.14	1.00870	0.00045
7023122	0.479343	0.000024	0.011788	0.000043	-0.048	0.034	1.87611	0.00001	13.90	0.40	1.27	0.43	0.58005	0.00006
7365537	0.344913	0.000007	0.003234	0.000008	-0.049	0.011	2.92563	0.00001	8.10	0.23	0.00	0.33	0.38088	0.00001
7380501	0.965164	0.000137	0.006745	0.000164	-0.017	0.003	0.96329	0.00005	2.26	0.31	1.12	4.95	1.19243	0.00024
7434470	0.417794	0.000013	0.003200	0.000013	-0.040	0.001	1.69873	0.00000	3.82	0.04	1.26	0.09	0.48637	0.00002
7583663	0.633695	0.000072	0.003101	0.000093	-0.031	0.007	1.04474	0.00003	6.28	0.54	0.90	1.44	0.70027	0.00007
7939065	0.462545	0.000037	0.008775	0.000037	-0.036	0.002	1.72817	0.00003	10.68	0.73	0.22	0.08	0.70123	0.00014
8364249	0.522644	0.000017	0.002100	0.000019	-0.029	0.003	1.86938	0.00002	3.94	0.17	0.57	0.96	0.57555	0.00003
8375138	0.469786	0.000023	0.002377	0.000025	-0.034	0.007	2.07777	0.00002	5.16	0.31	0.52	0.91	0.51310	0.00003
8645874	0.499508	0.000019	0.026876	0.000029	-0.016	0.005	1.84701	0.00001	5.71	0.17	1.15	0.06	1.02248	0.00017
8836473	0.505219	0.000035	0.007475	0.000021	-0.034	0.061	1.88341	0.00003	1.47	0.13	0.44	0.51	0.57115	0.00001
9419694	0.937988	0.000193	0.013458	0.000118	-0.016	0.023	1.03279	0.00004	14.74	1.51	2.02	3.78	1.13479	0.00037
9480469	0.518274	0.000039	0.002455	0.000033	-0.028	0.035	1.99485	0.00003	7.14	0.66	0.23	3.80	0.54748	0.00006
9595743	0.683181	0.000099	0.006987	0.000146	-0.033	0.040	1.72911	0.00003	6.93	0.62	1.09	2.68	0.76882	0.00014
9751996	0.858863	0.000051	0.037537	0.000072	0.002	0.010	1.28331	0.00006	2.34	0.36	2.68	0.50	1.19934	0.00010
10224094	0.875860	0.000110	0.019195	0.000134	-0.017	0.010	1.01242	0.00010	2.81	0.71	0.00	1.25	1.08730	0.00031
10467146	0.996770	0.000141	0.007373	0.000165	-0.018	0.061	0.95498	0.00004	3.47	0.36	1.09	28.11	1.09130	0.00018
11080103	0.911278	0.000154	0.011062	0.000194	-0.019	0.016	1.24139	0.00002	12.13	0.75	0.97	4.74	1.09122	0.00017
11099031	0.698765	0.000055	0.004375	0.000067	-0.026	0.003	0.91665	0.00003	1.42	0.13	0.97	0.99	0.81286	0.00006
11294808	0.912759	0.000098	0.006943	0.000118	-0.043	0.023	2.22475	0.00004	2.32	0.22	1.17	13.74	0.99168	0.00013
11456474	0.690040	0.000060	0.003209	0.000071	-0.025	0.002	1.47147	0.00002	4.17	0.26	1.19	1.38	0.78283	0.00007
11721304	1.026382	0.000331	0.011981	0.000430	-0.020	0.002	0.92287	0.00009	4.10	1.03	2.42	0.77	1.32327	0.00053
11754232	0.665339	0.000034	0.031646	0.000051	-0.002	0.034	1.10338	0.00006	2.03	0.30	1.94	0.37	0.90630	0.00005
11826272	1.074839	0.000399	0.015434	0.000543	-0.018	0.001	0.83370	0.00006	11.61	1.94	1.87	0.50	1.59754	0.00086
11907454	0.548784	0.000061	0.002847	0.000084	-0.033	0.006	1.18715	0.00003	4.43	0.36	0.87	0.89	0.60608	0.00007
11917550	0.716579	0.000084	0.005704	0.000104	-0.028	0.003	1.28768	0.00004	9.21	0.87	1.86	1.08	0.82445	0.00018
11920505	0.787720	0.000142	0.007948	0.000144	-0.027	0.003	1.19884	0.00004	13.26	1.43	1.90	1.58	0.95371	0.00020
12066947	0.359580	0.000016	0.002396	0.000017	-0.040	0.003	2.72379	0.00004	2.77	0.30	0.17	0.14	0.40962	0.00003
12458189	0.917404	0.000135	0.005263	0.000178	-0.019	0.003	1.03961	0.00003	4.44	0.30	1.09	2.24	1.12169	0.00019

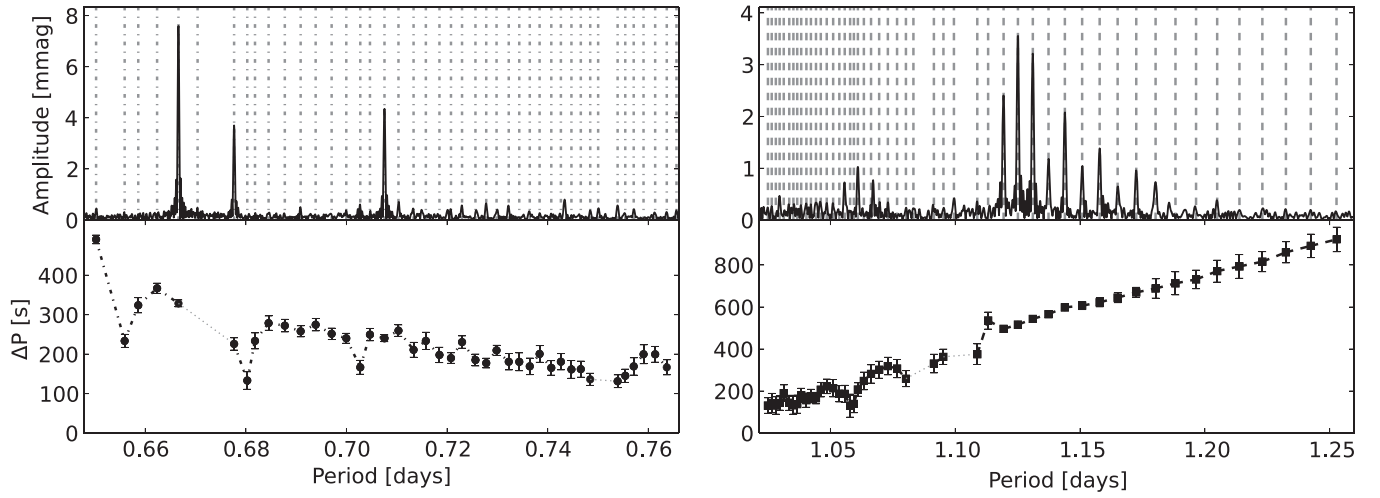


Figure 13. The period spacing patterns of KIC 3448365.

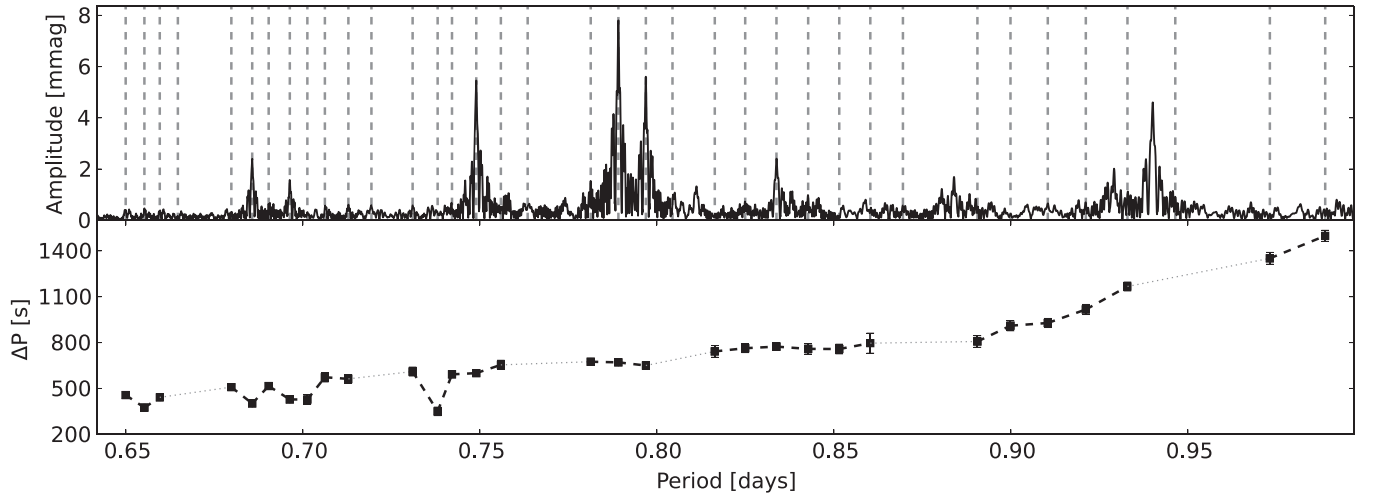


Figure 14. The period spacing patterns of KIC 4757184.

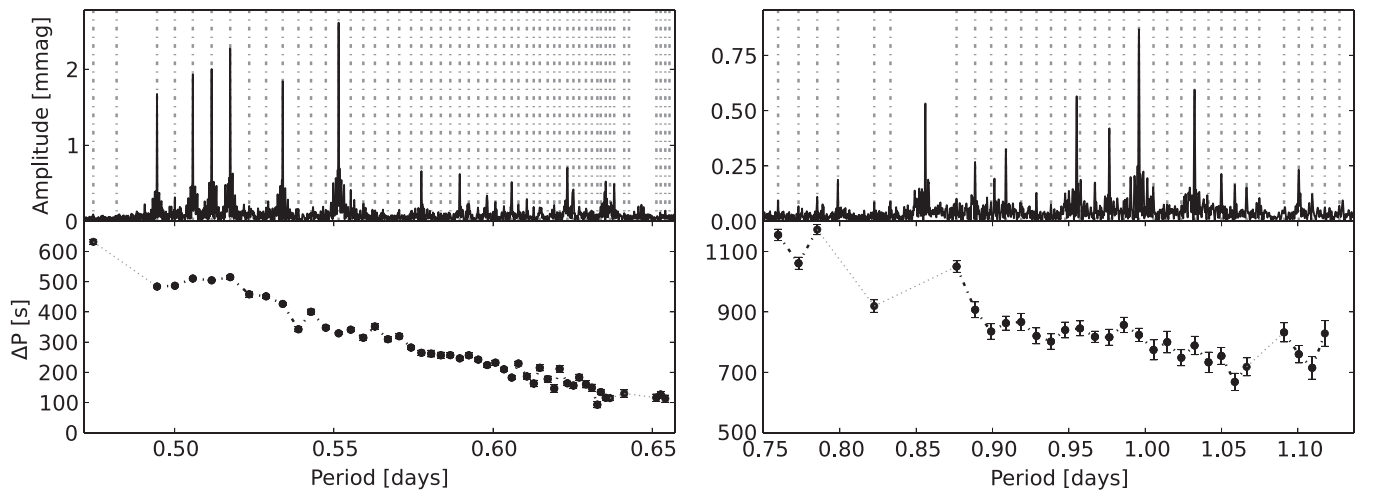


Figure 15. The period spacing patterns of KIC 4846809.

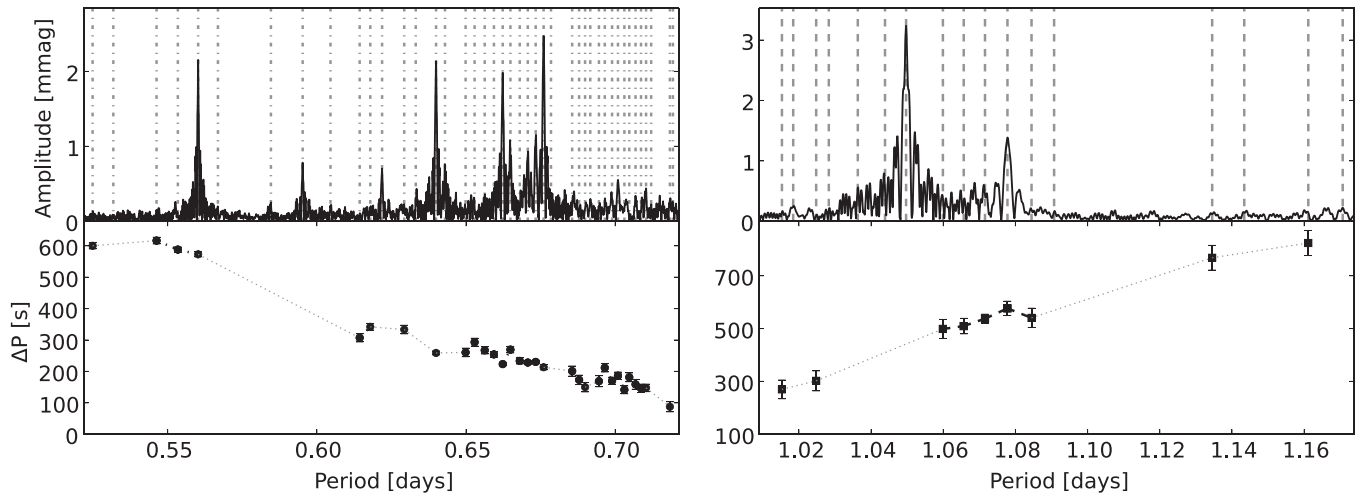


Figure 16. The period spacing patterns of KIC 5114382.

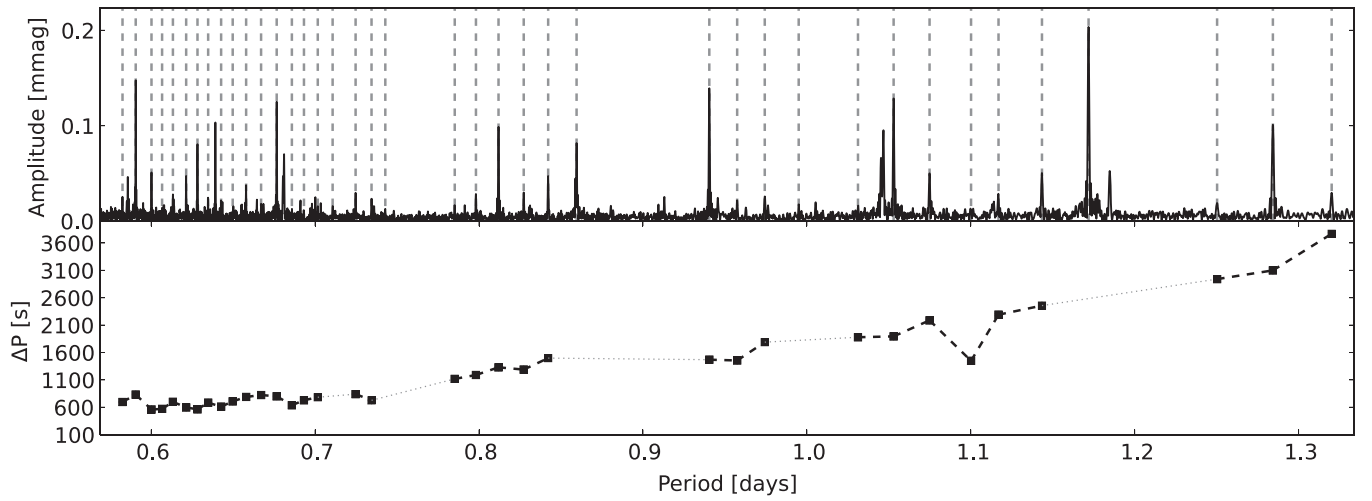


Figure 17. The period spacing patterns of KIC 5350598.

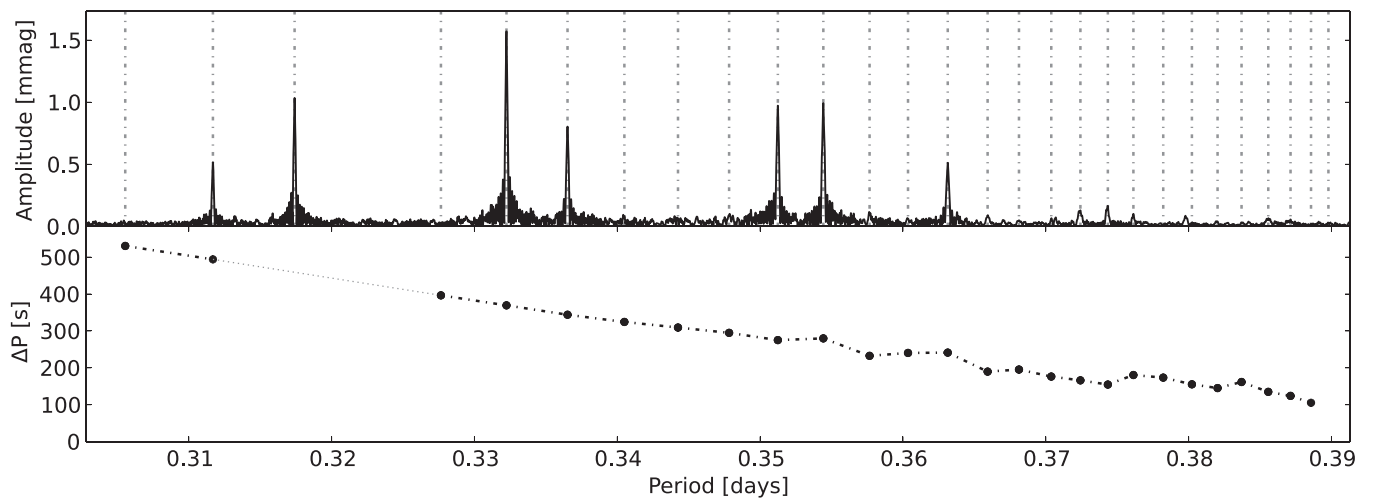


Figure 18. The period spacing patterns of KIC 5522154.

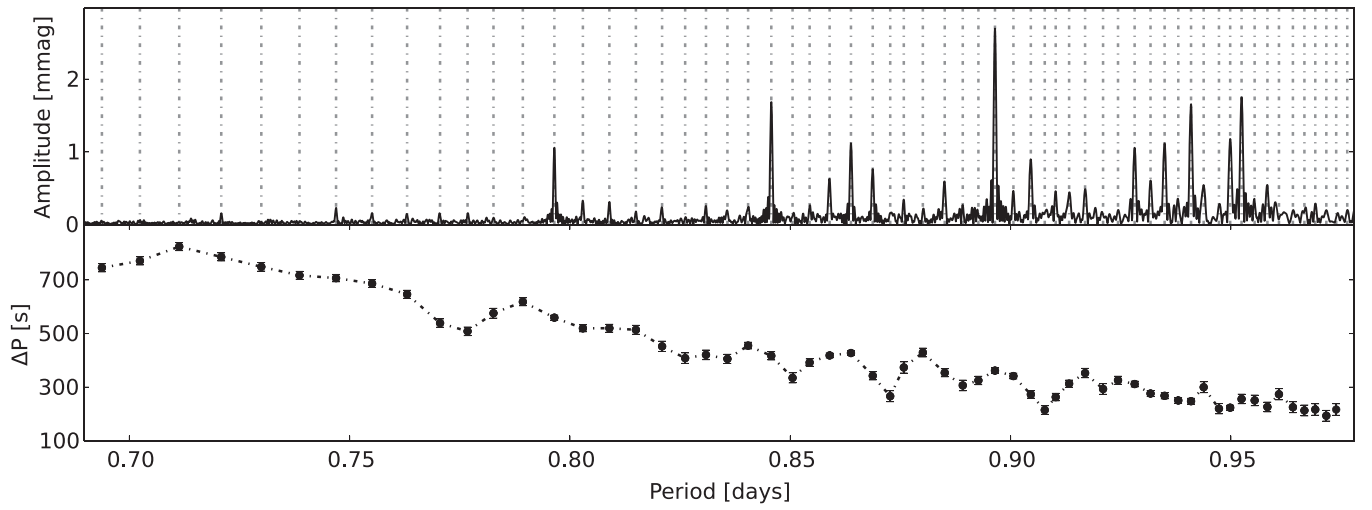


Figure 19. The period spacing patterns of KIC 5708550.

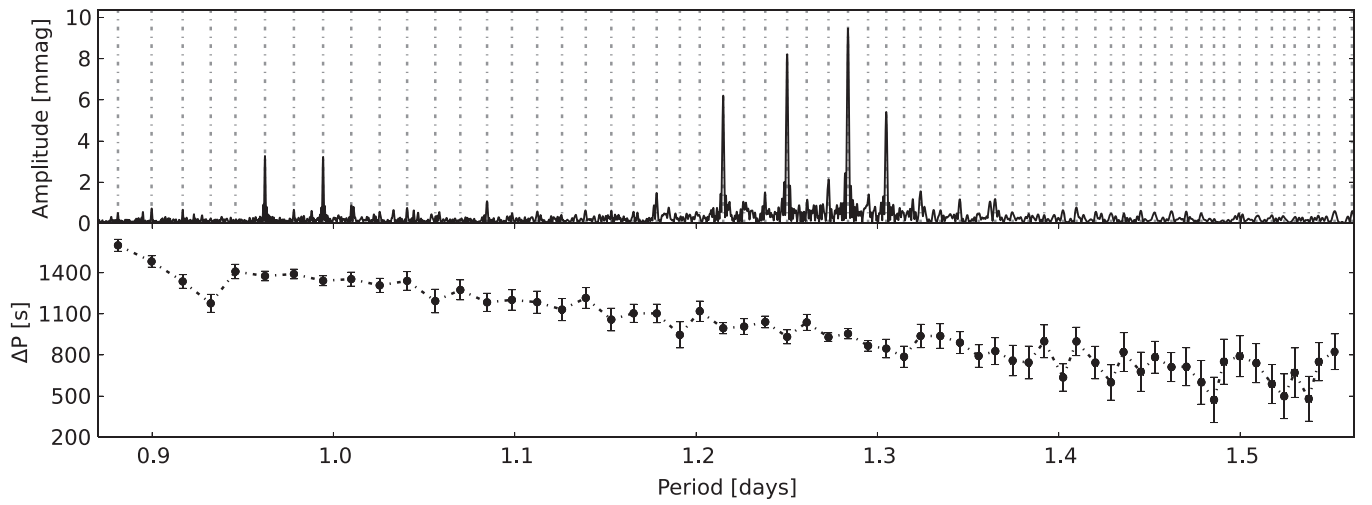


Figure 20. The period spacing patterns of KIC 5788623.

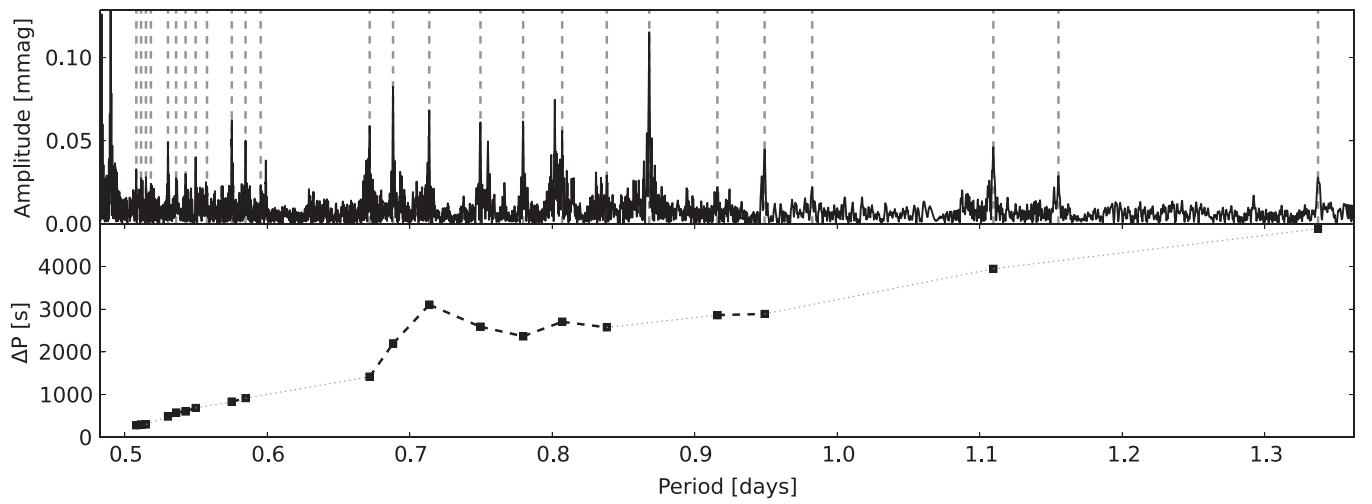


Figure 21. The period spacing patterns of KIC 6185513.

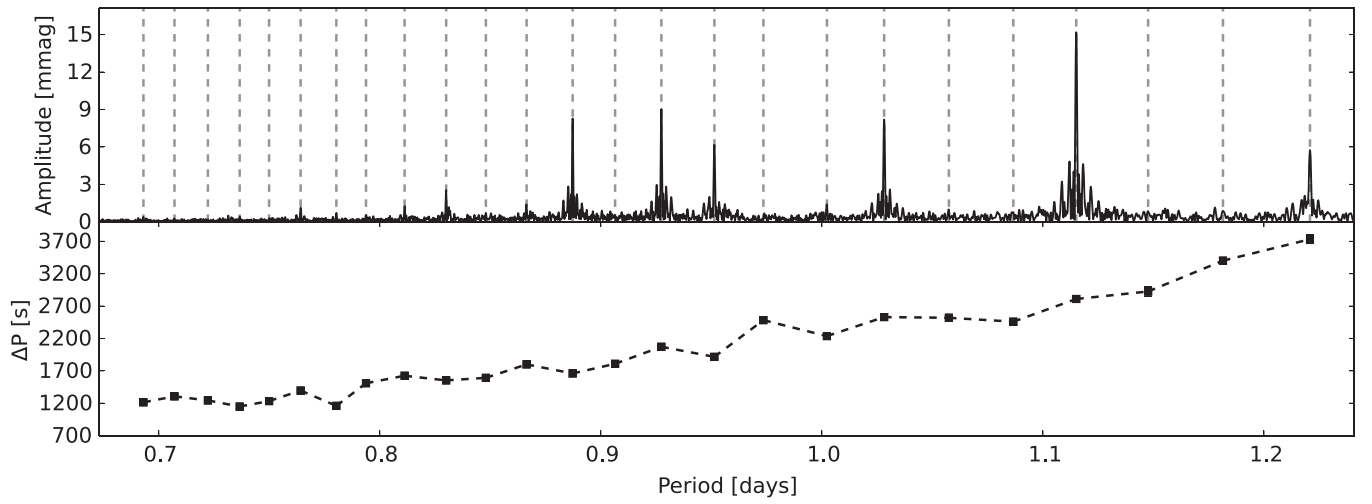


Figure 22. The period spacing patterns of KIC 6425437.

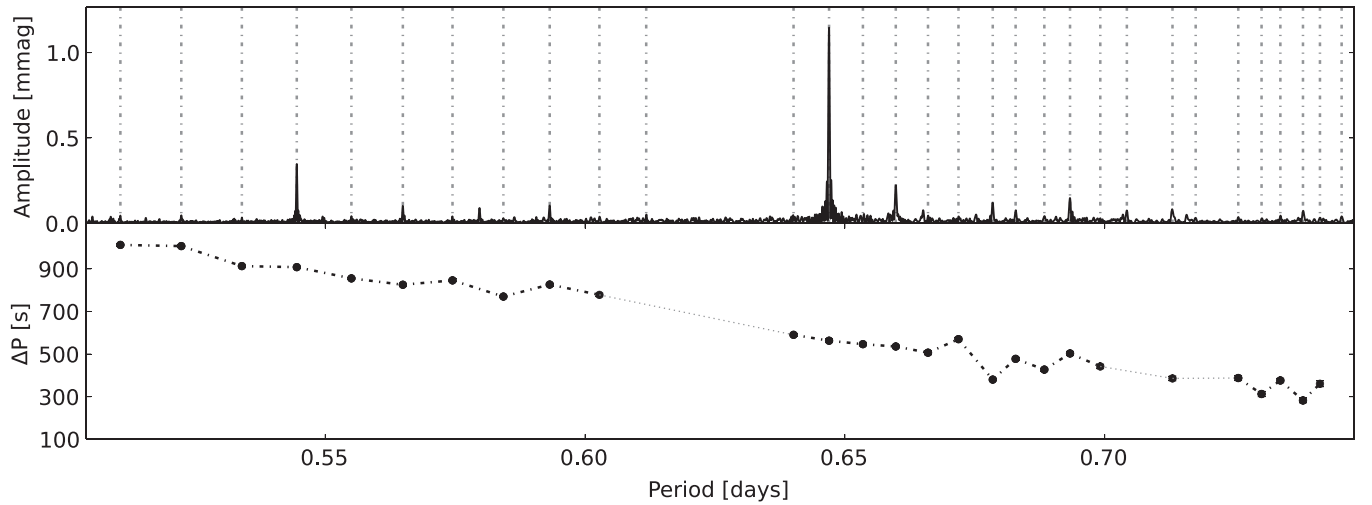


Figure 23. The period spacing patterns of KIC 6468146.

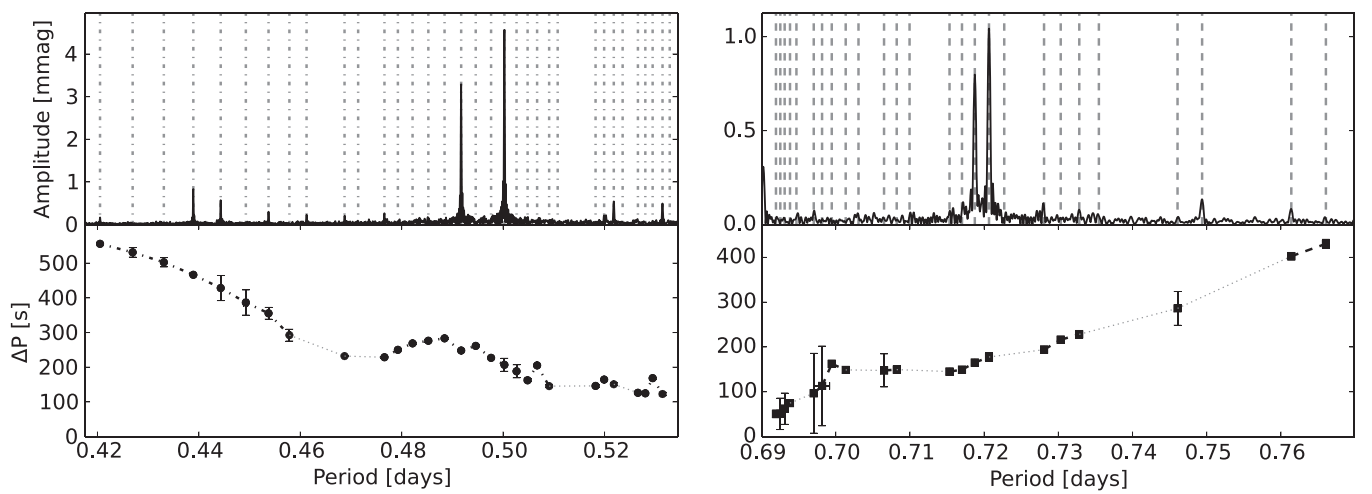


Figure 24. The period spacing patterns of KIC 6468987.

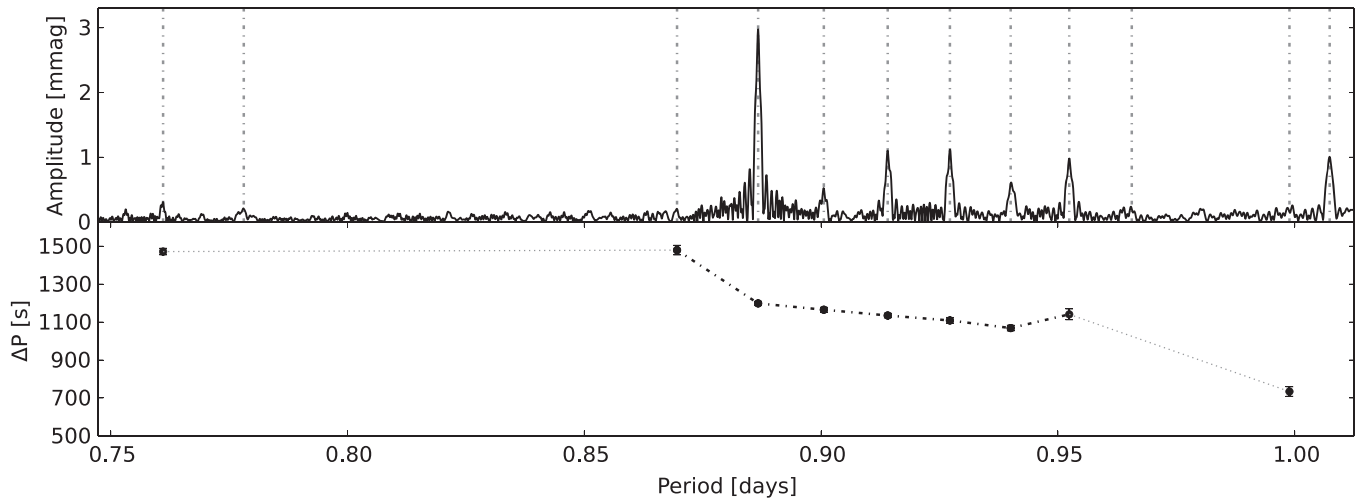


Figure 25. The period spacing patterns of KIC 6678174.

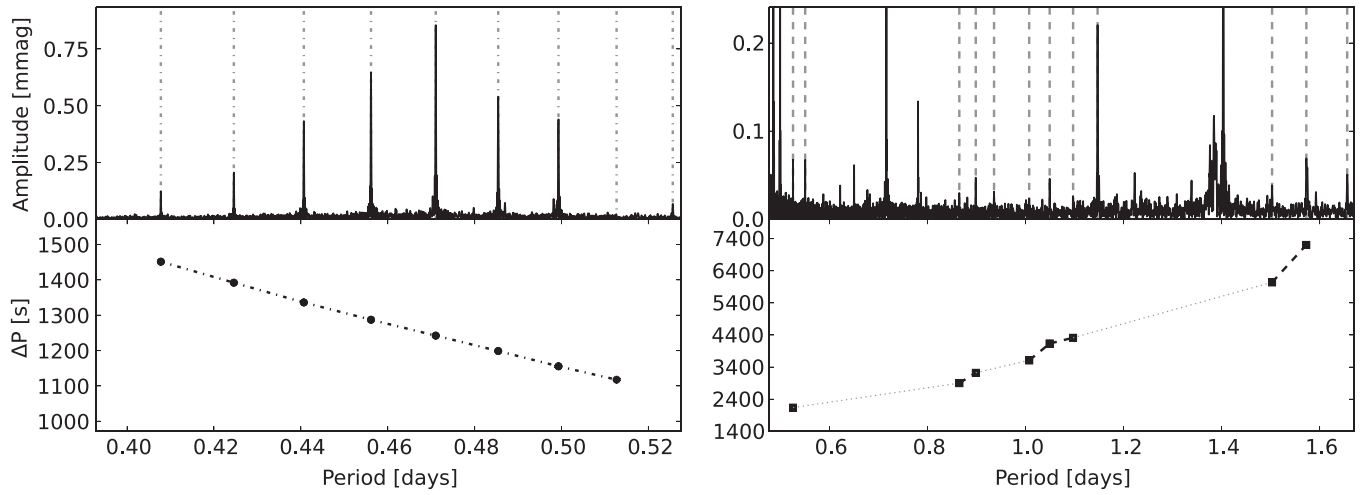


Figure 26. The period spacing patterns of KIC 6778063.

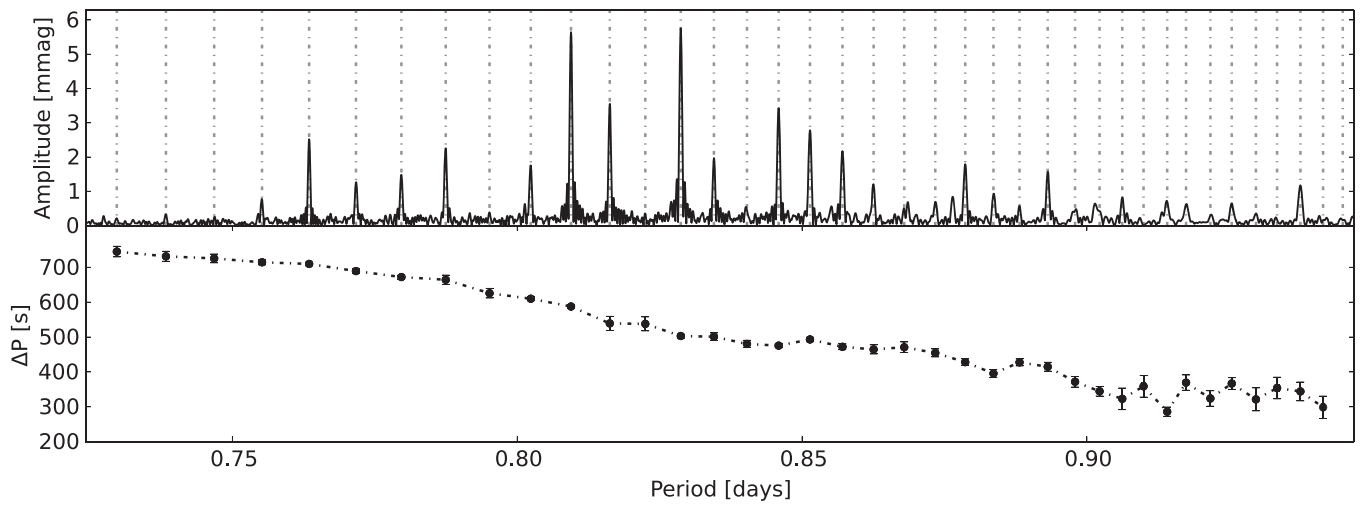


Figure 27. The period spacing patterns of KIC 6935014.

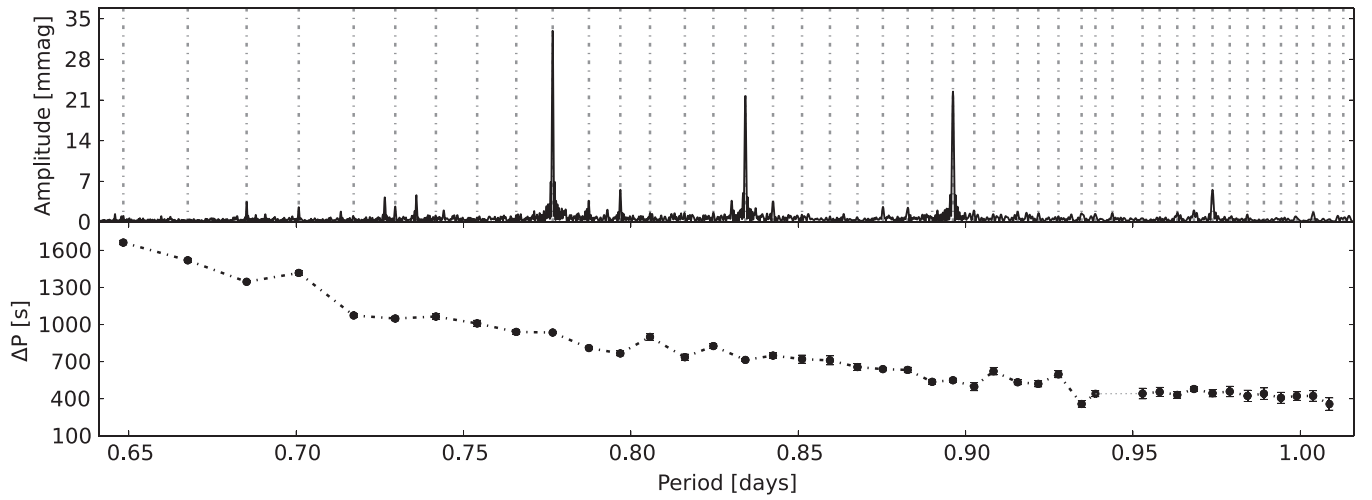


Figure 28. The period spacing patterns of KIC 6953103.

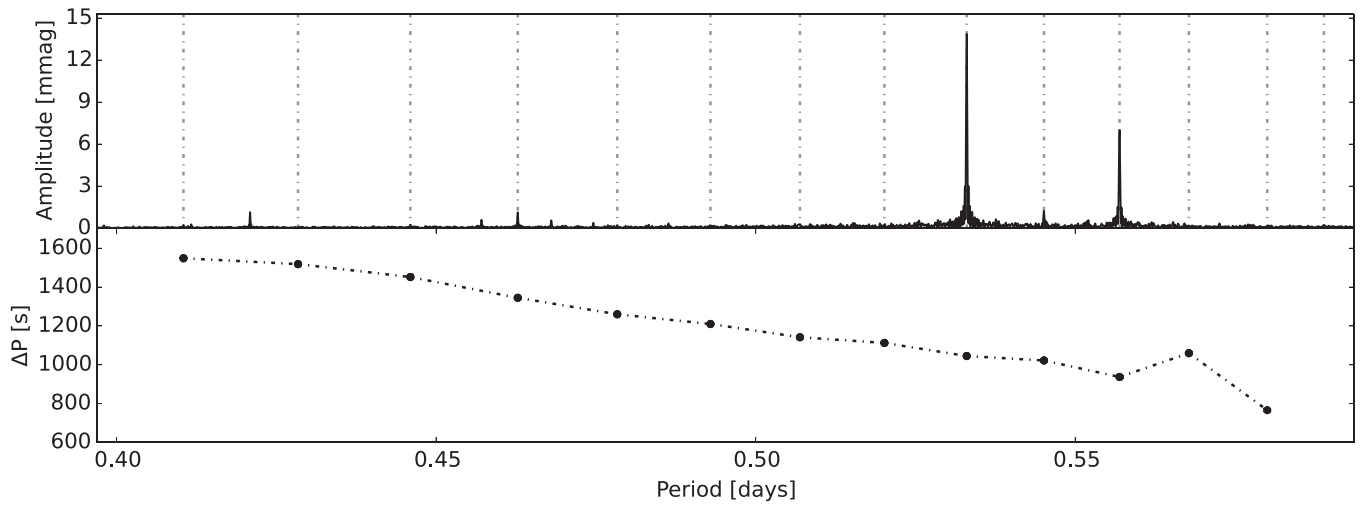


Figure 29. The period spacing patterns of KIC 7023122.

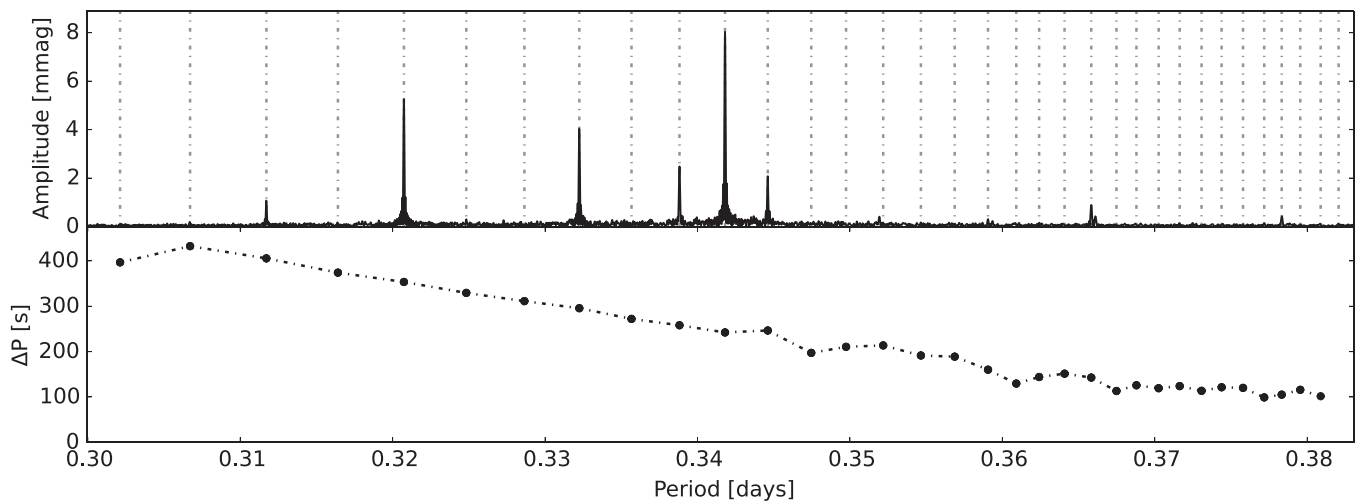


Figure 30. The period spacing patterns of KIC 7365537.

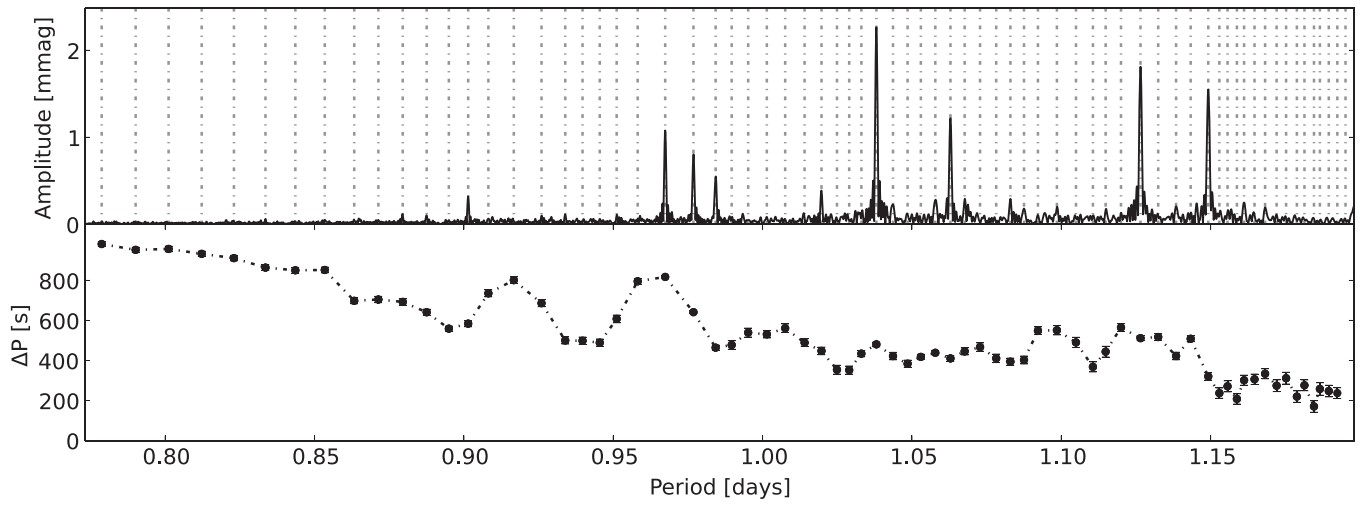


Figure 31. The period spacing patterns of KIC 7380501.

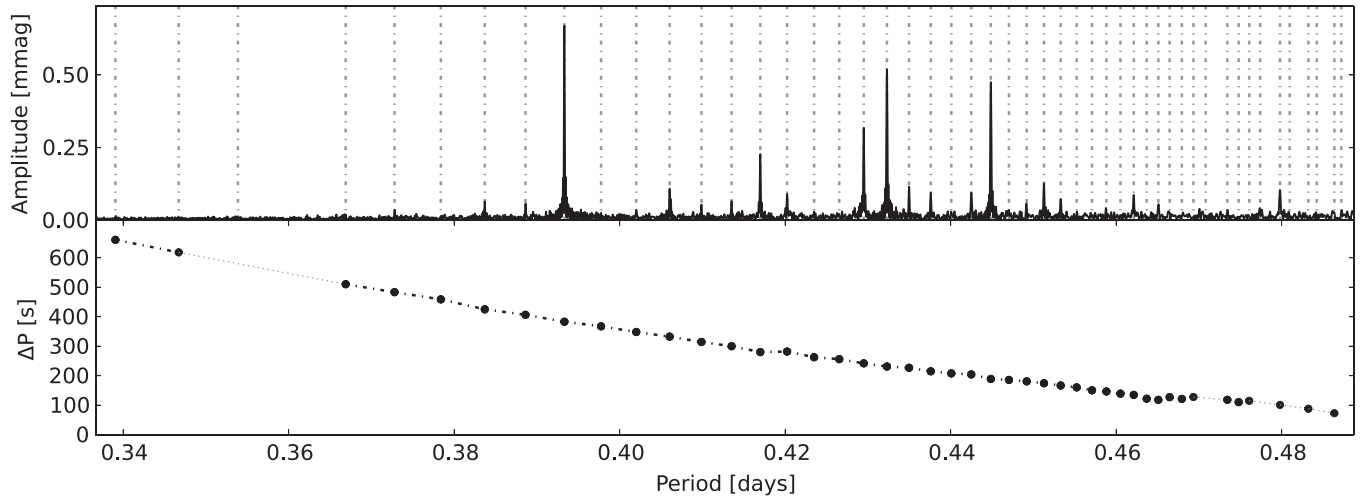


Figure 32. The period spacing patterns of KIC 7434470.

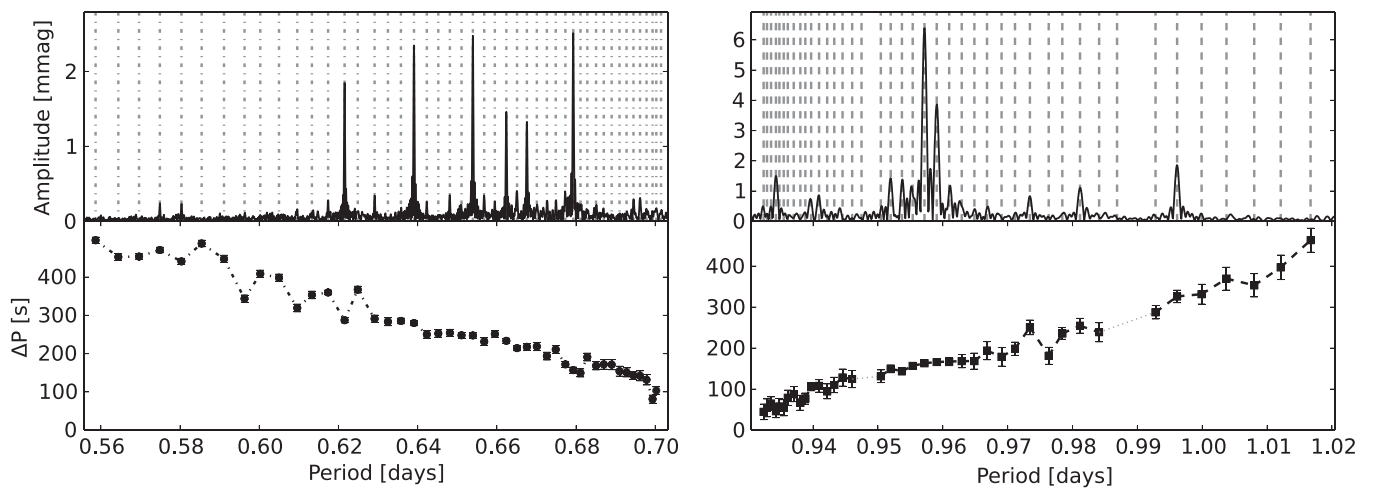


Figure 33. The period spacing patterns of KIC 7583663.

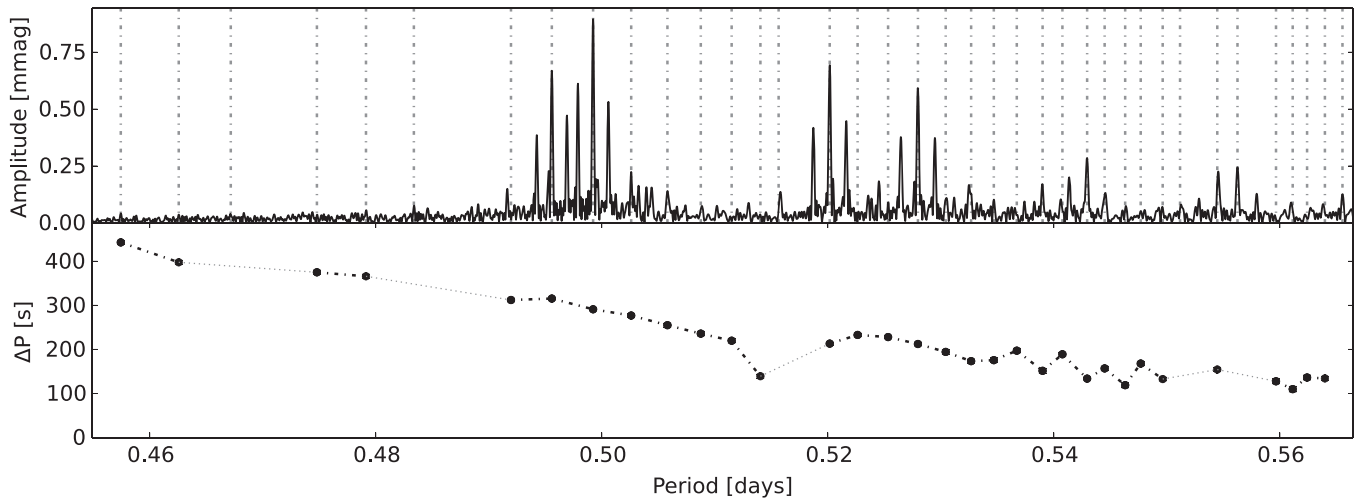


Figure 34. The period spacing patterns of KIC 7746984.

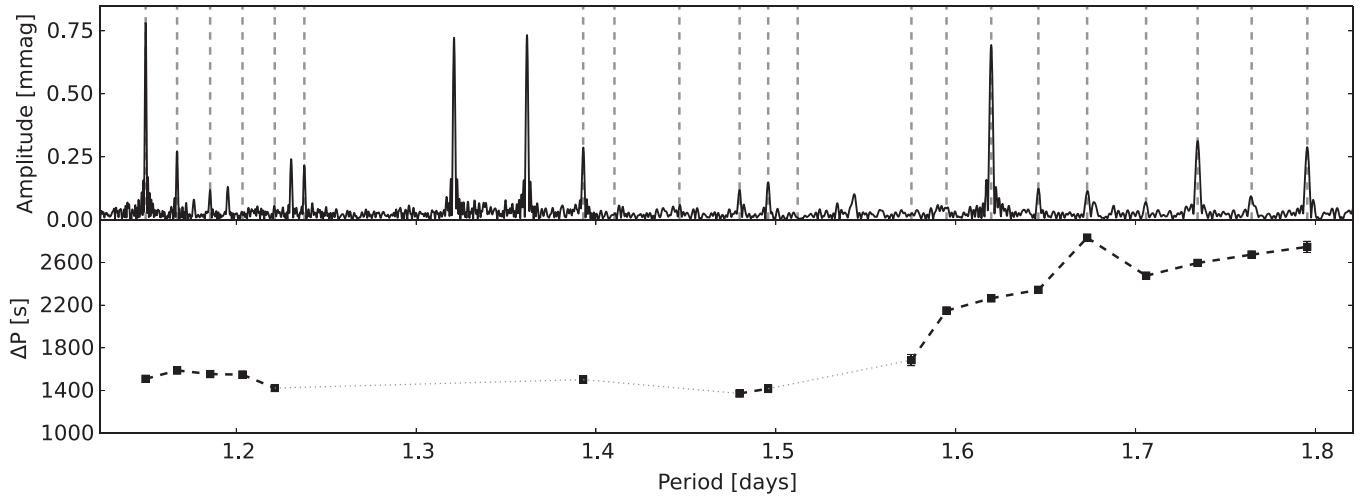


Figure 35. The period spacing patterns of KIC 7867348.

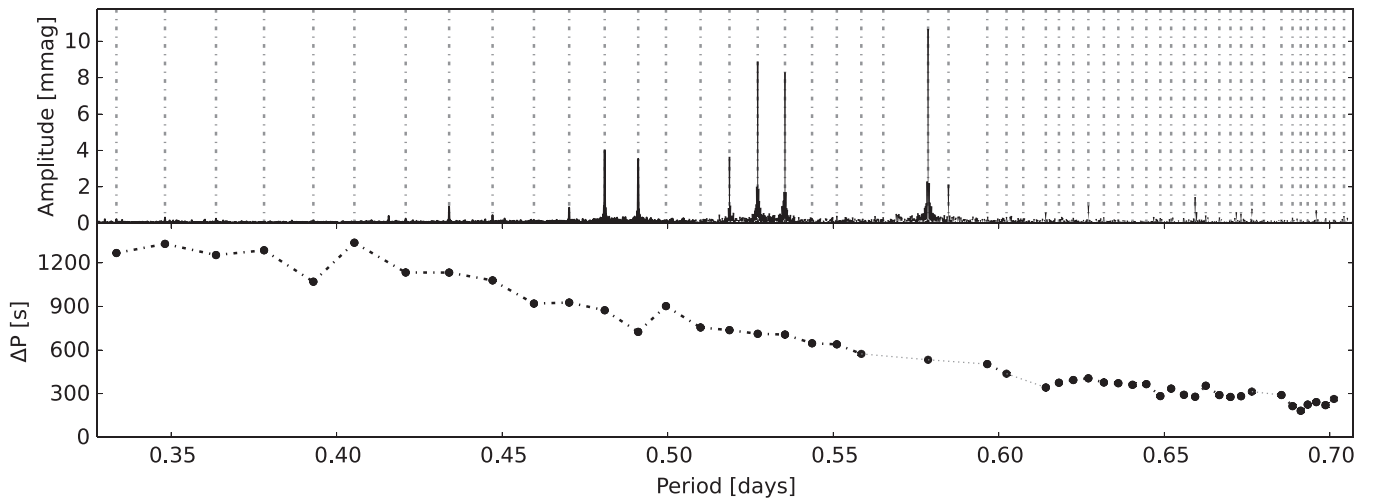


Figure 36. The period spacing patterns of KIC 7939065.

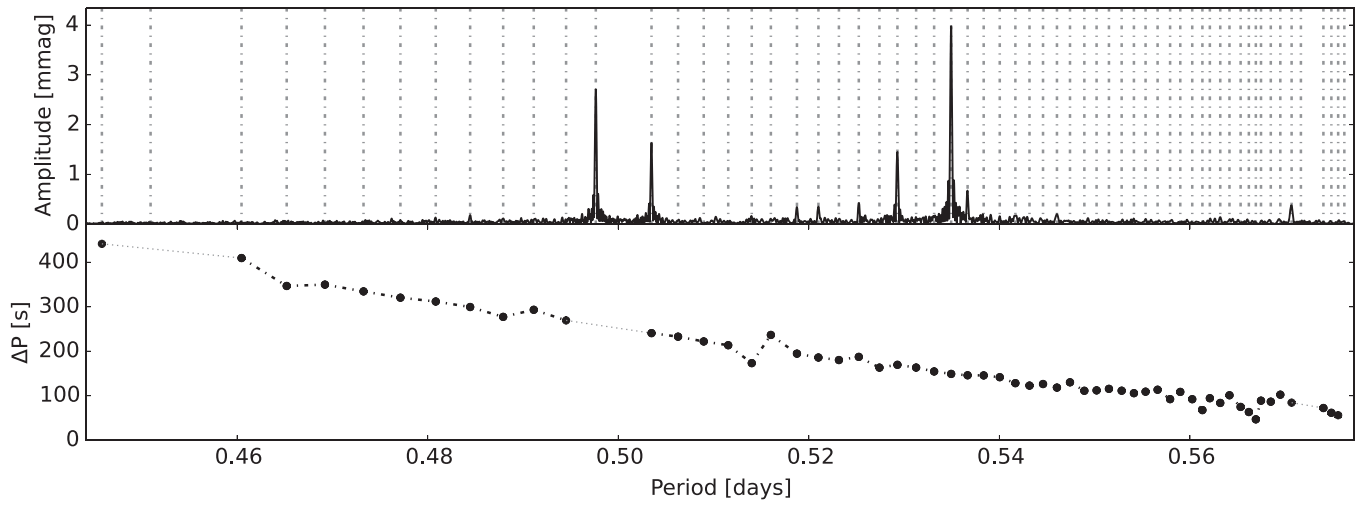


Figure 37. The period spacing patterns of KIC 8364249.

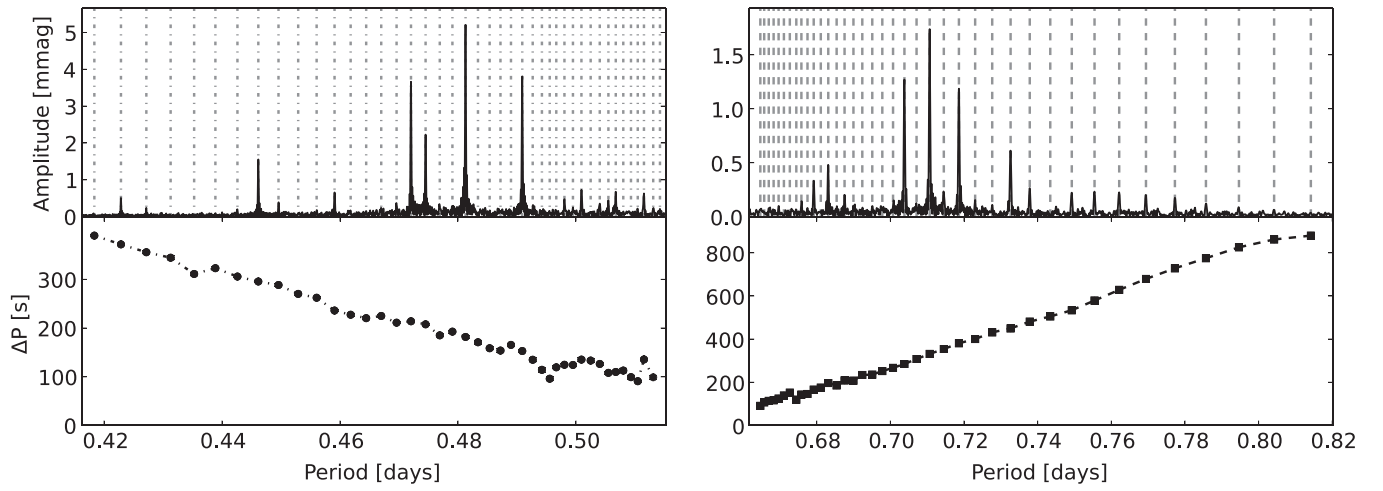


Figure 38. The period spacing patterns of KIC 8375138.

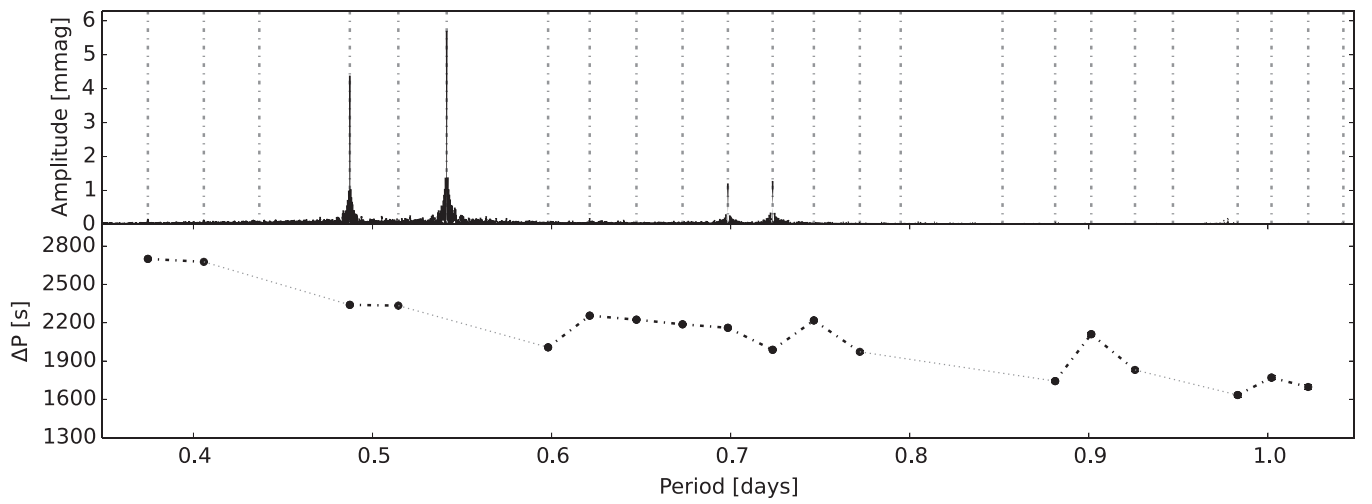


Figure 39. The period spacing patterns of KIC 8645874.

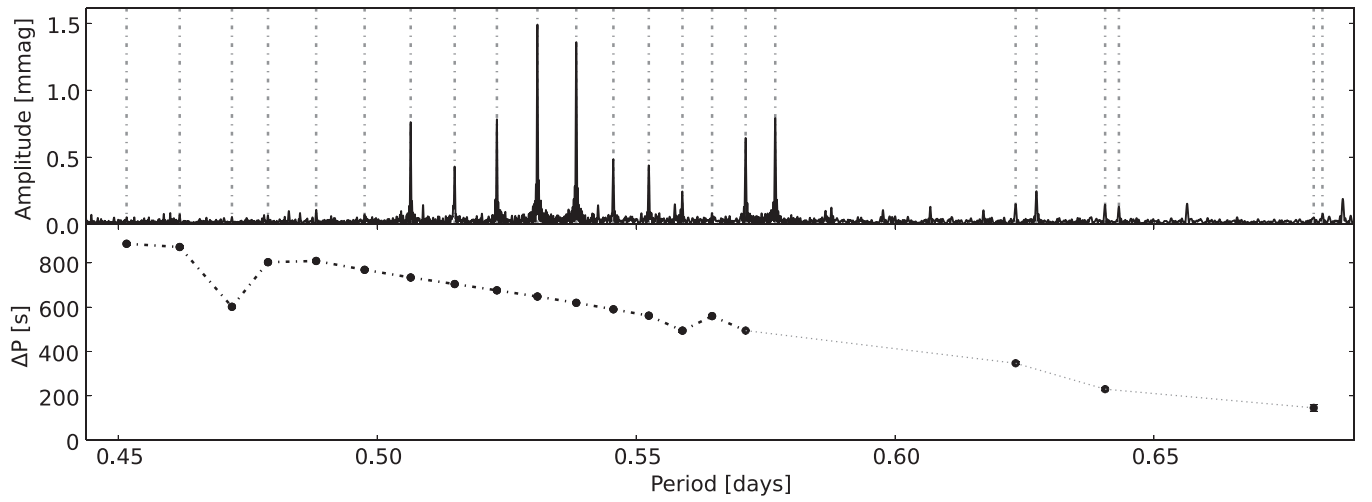


Figure 40. The period spacing patterns of KIC 8836473.

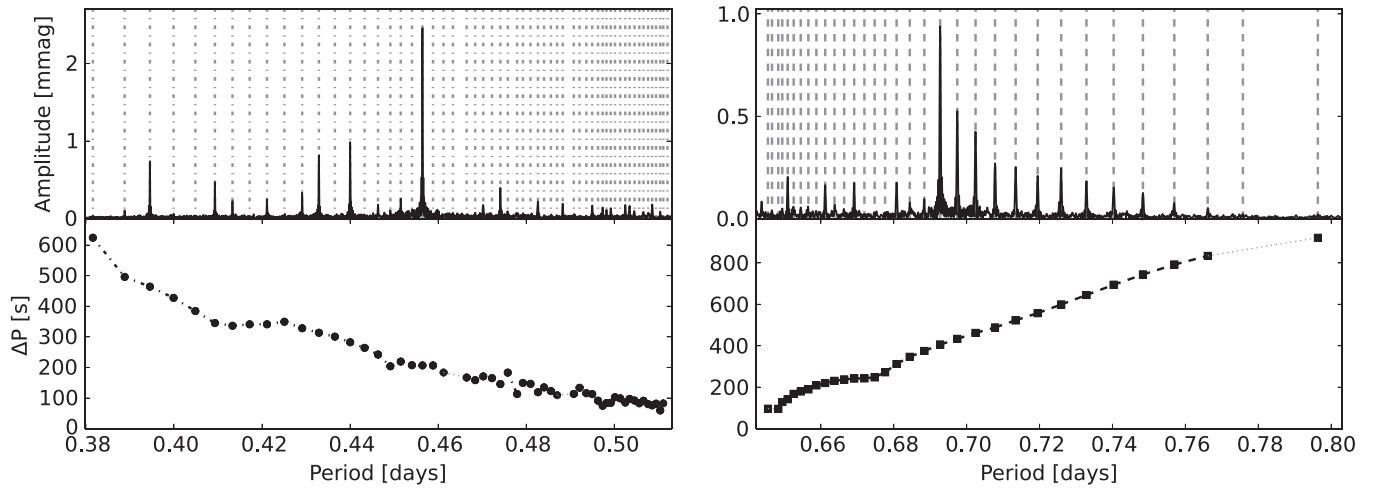


Figure 41. The period spacing patterns of KIC 9210943.

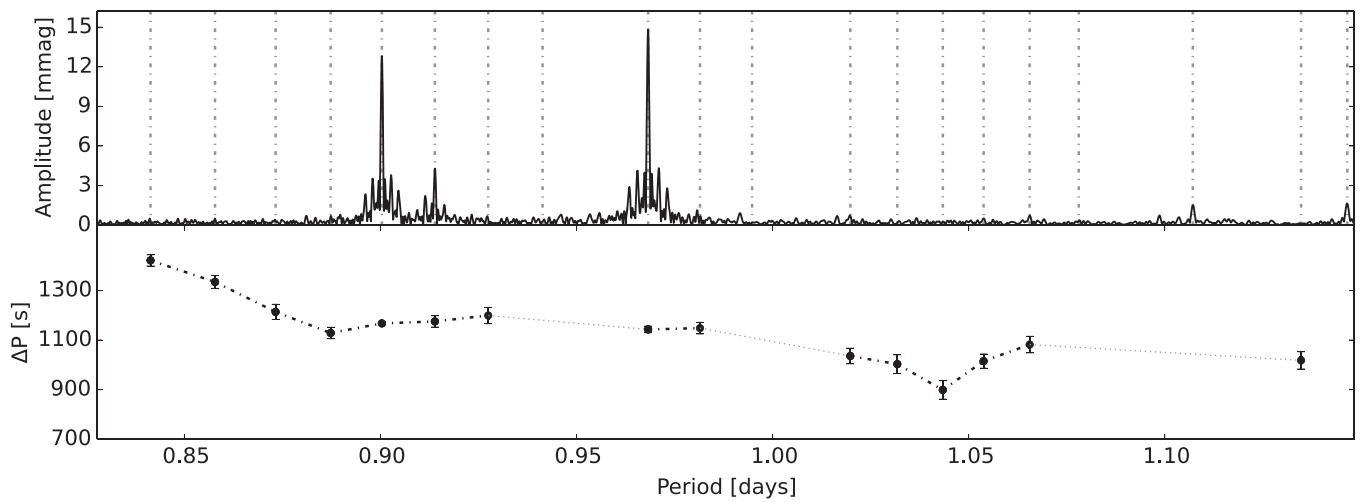


Figure 42. The period spacing patterns of KIC 9419694.

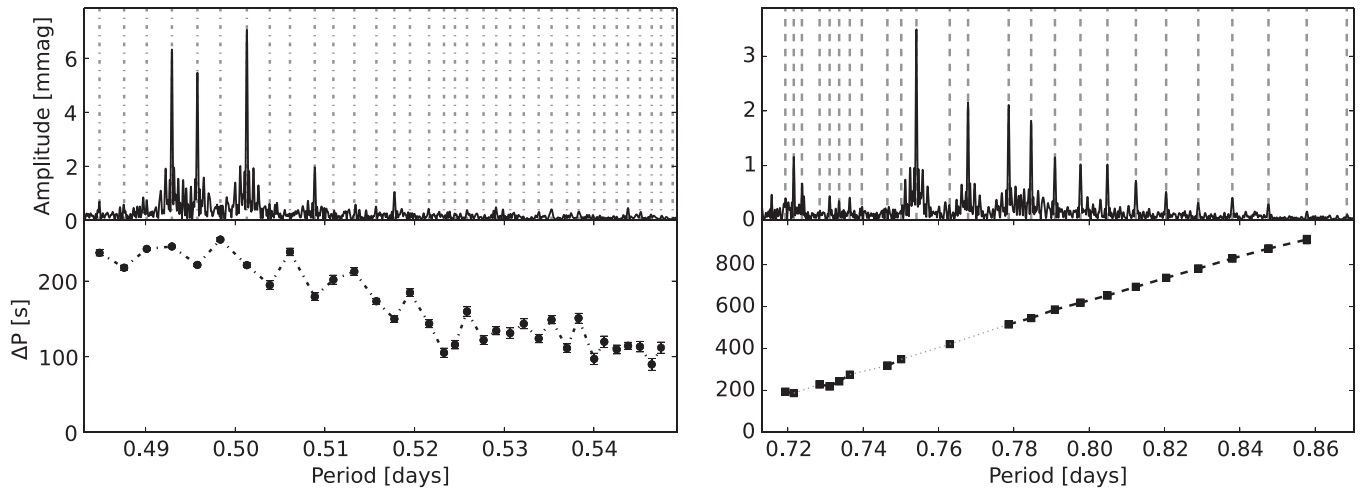


Figure 43. The period spacing patterns of KIC 9480469.

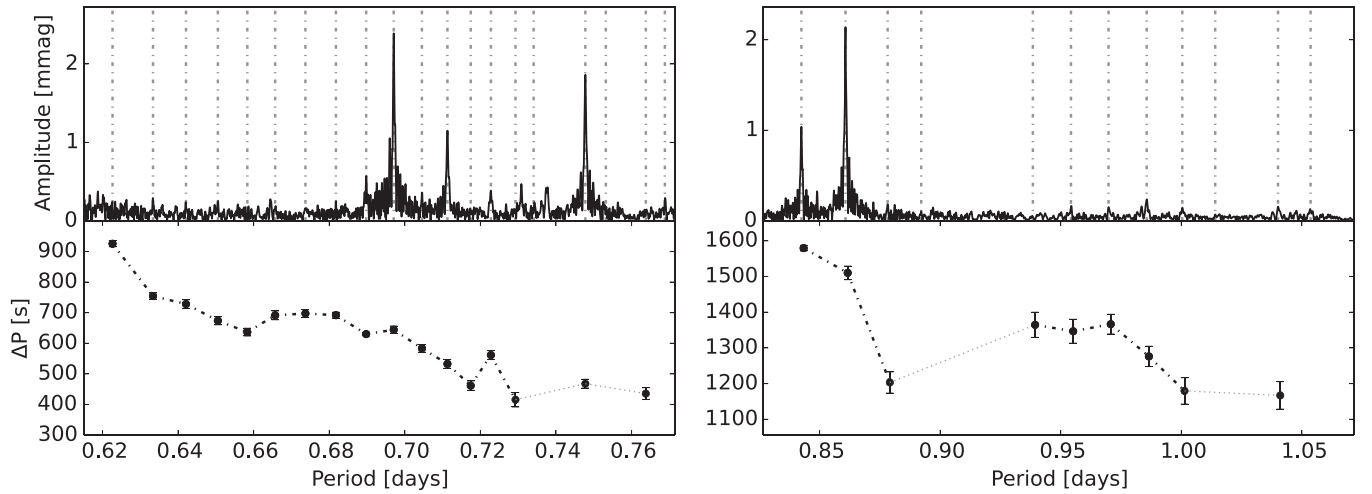


Figure 44. The period spacing patterns of KIC 9595743.

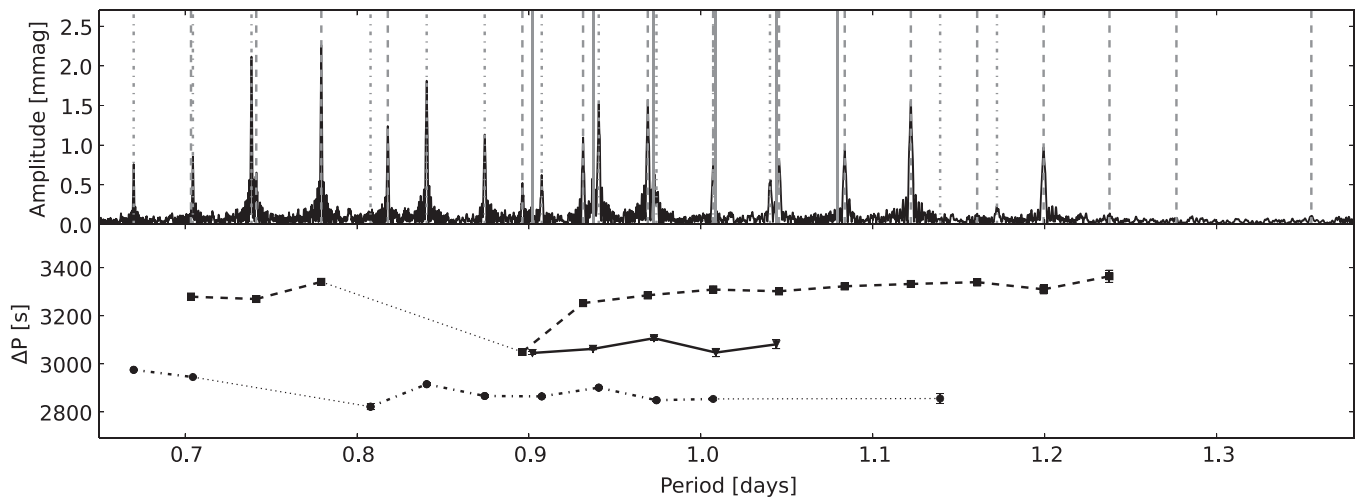


Figure 45. The period spacing patterns of KIC 9751996.

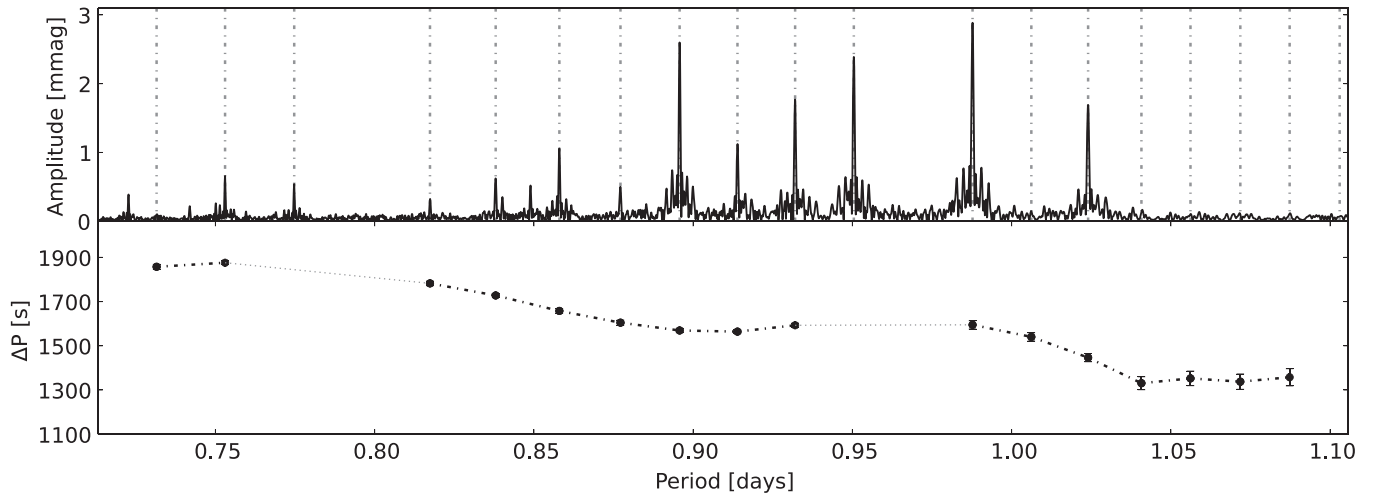


Figure 46. The period spacing patterns of KIC 10224094.

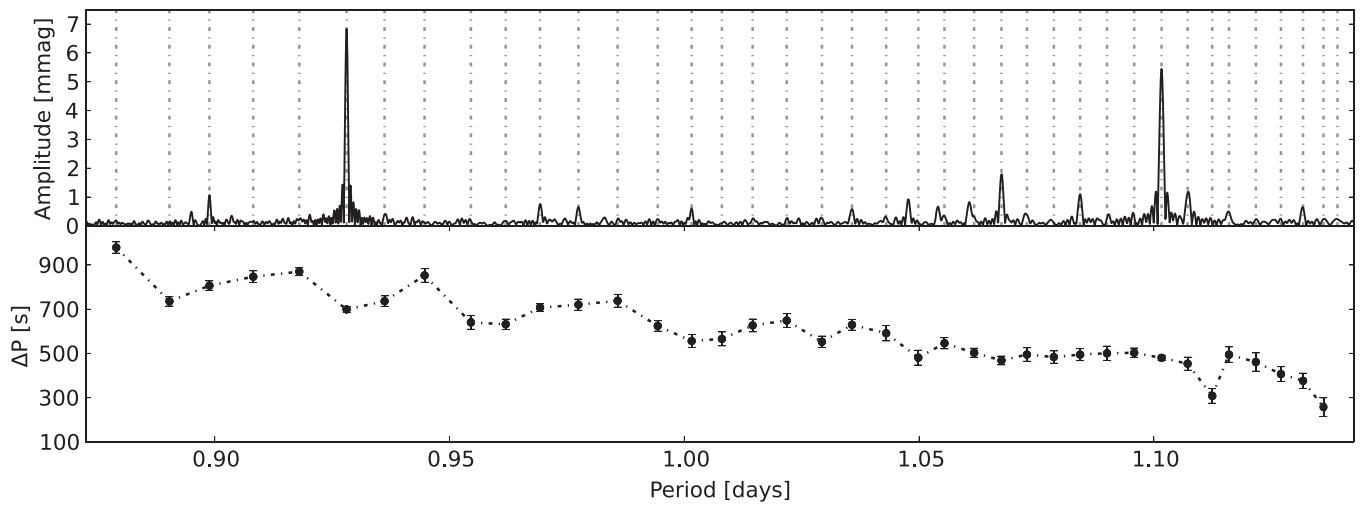


Figure 47. The period spacing patterns of KIC 10256787.

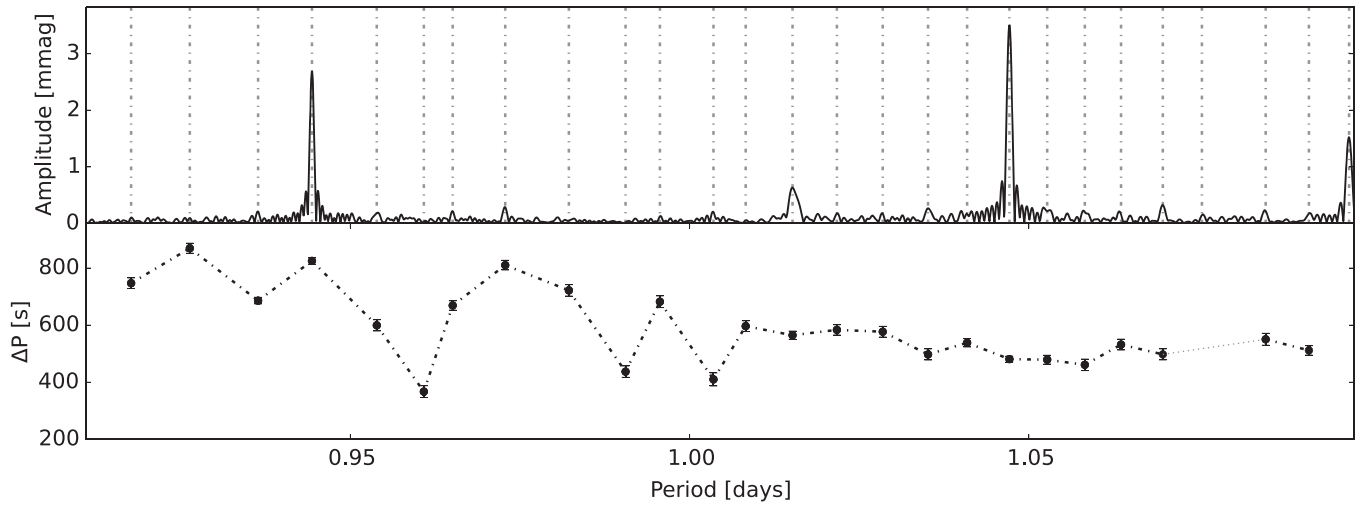


Figure 48. The period spacing patterns of KIC 10467146.

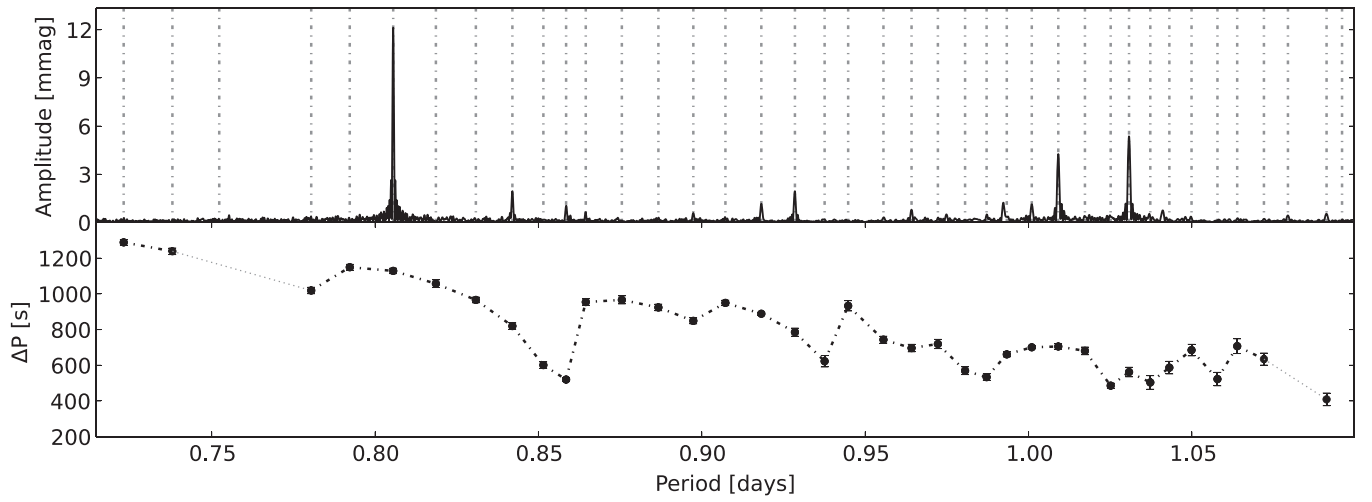


Figure 49. The period spacing patterns of KIC 11080103.

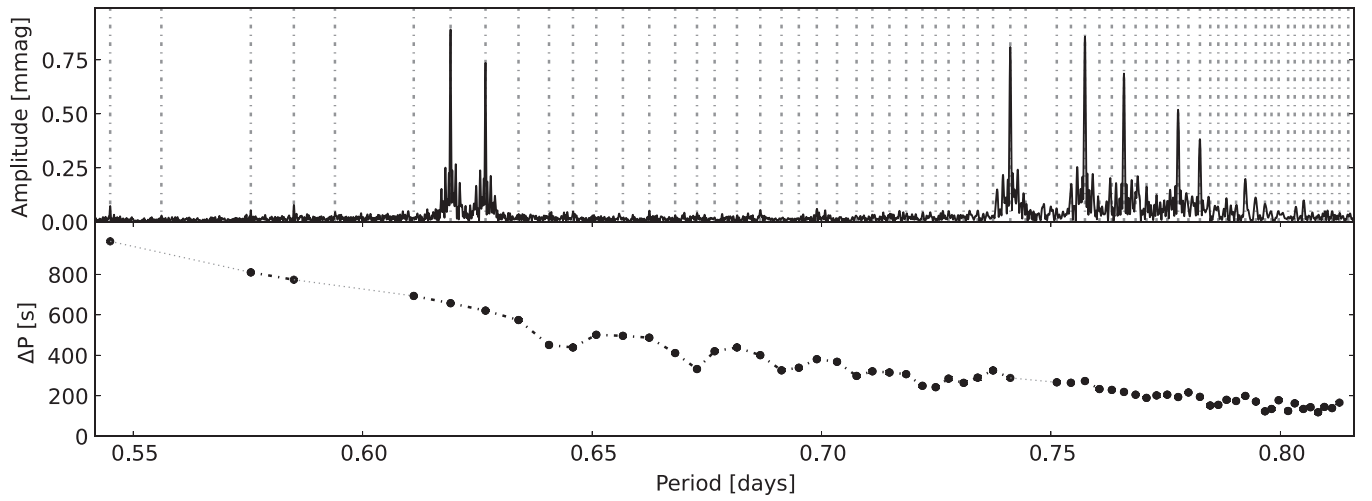


Figure 50. The period spacing patterns of KIC 11099031.

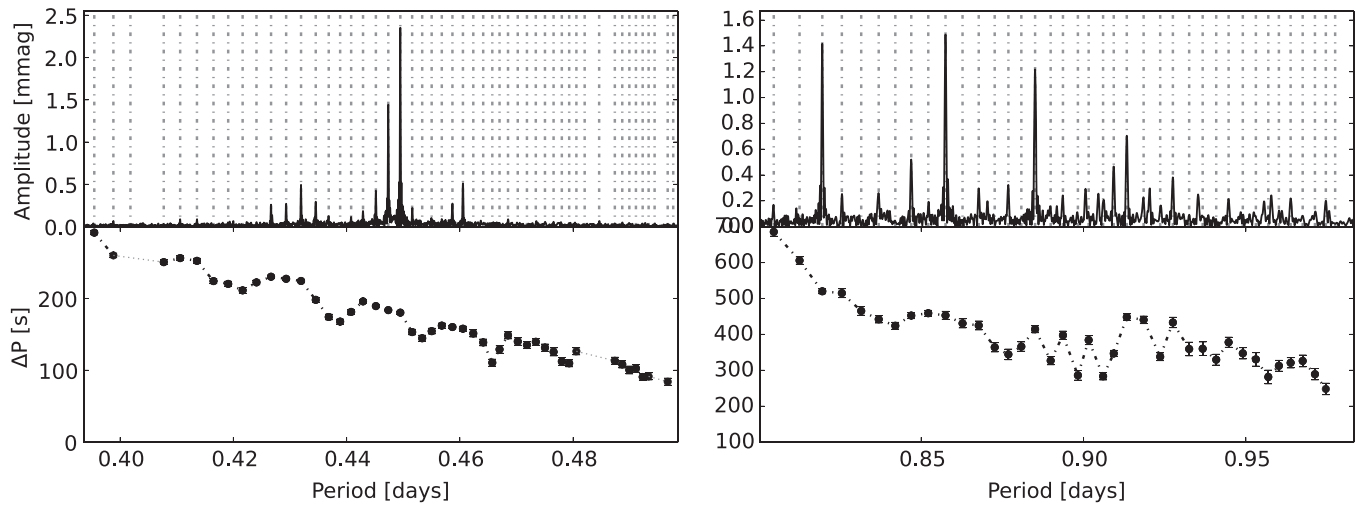


Figure 51. The period spacing patterns of KIC 11294808.

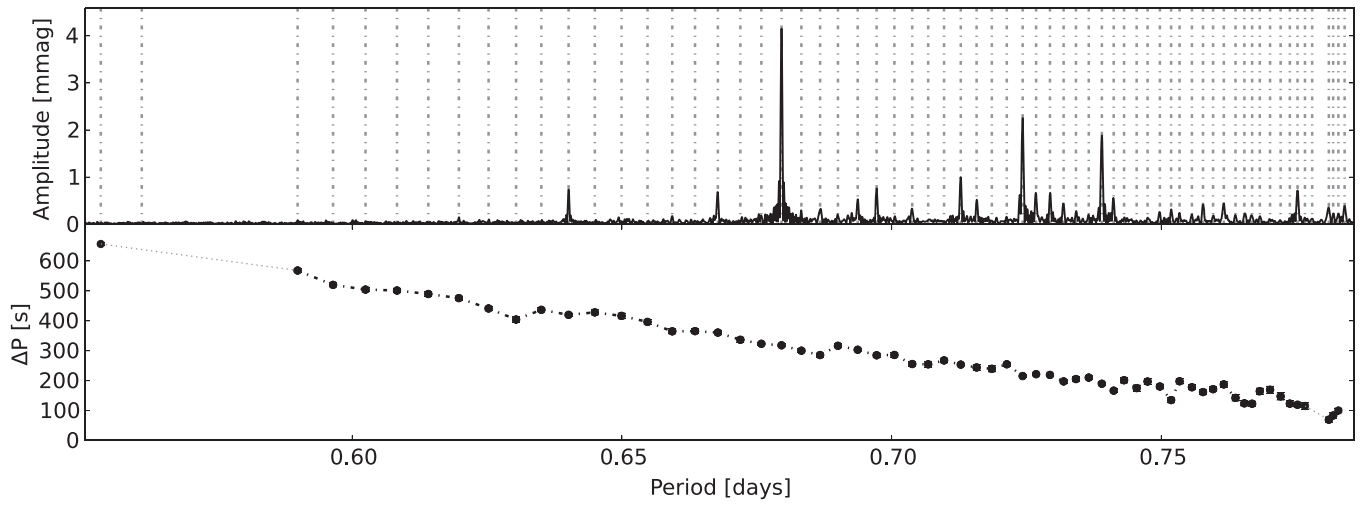


Figure 52. The period spacing patterns of KIC 11456474.

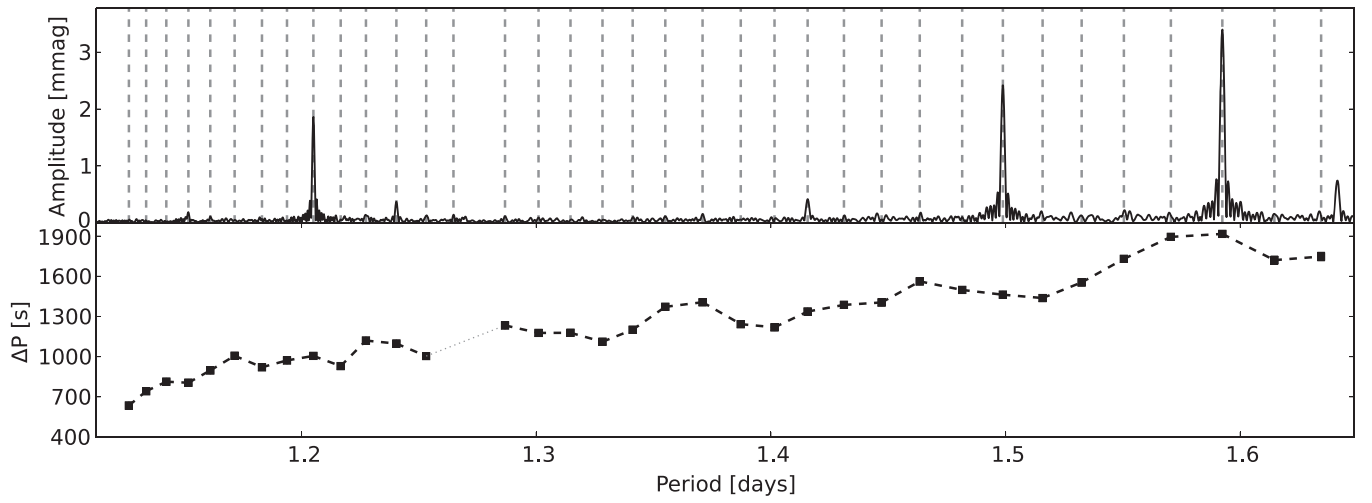


Figure 53. The period spacing patterns of KIC 11668783.

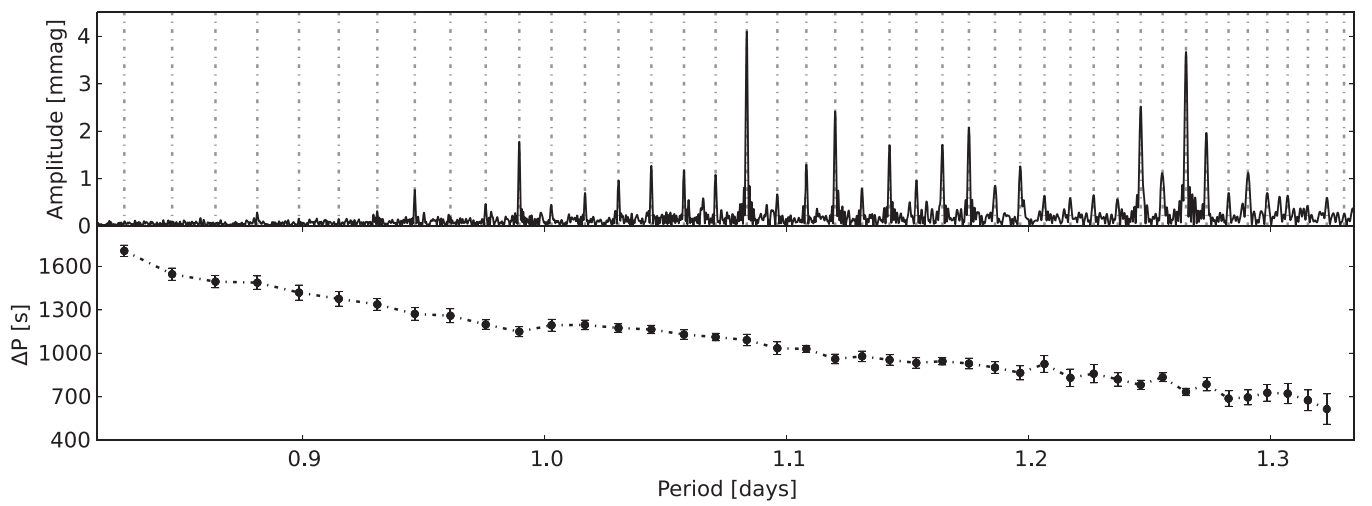


Figure 54. The period spacing patterns of KIC 11721304.

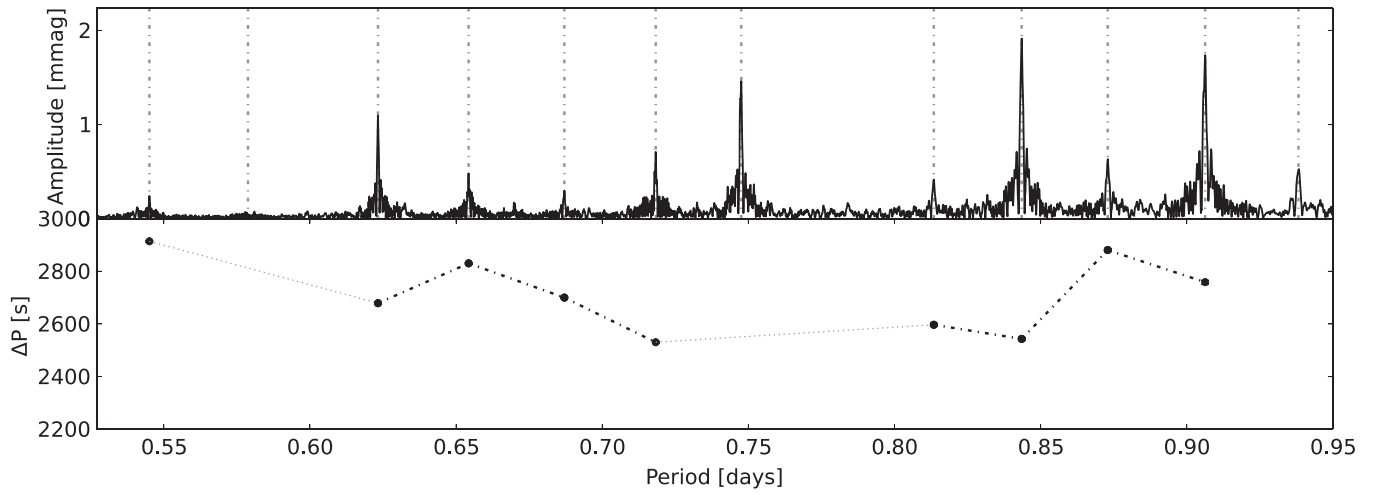


Figure 55. The period spacing patterns of KIC 11754232.

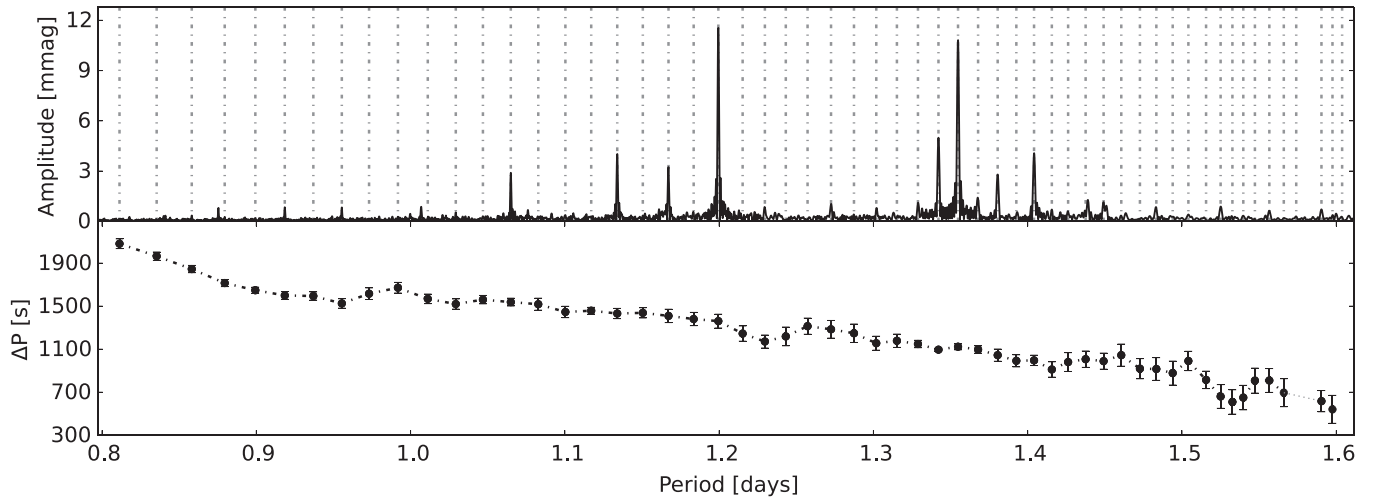


Figure 56. The period spacing patterns of KIC 11826272.

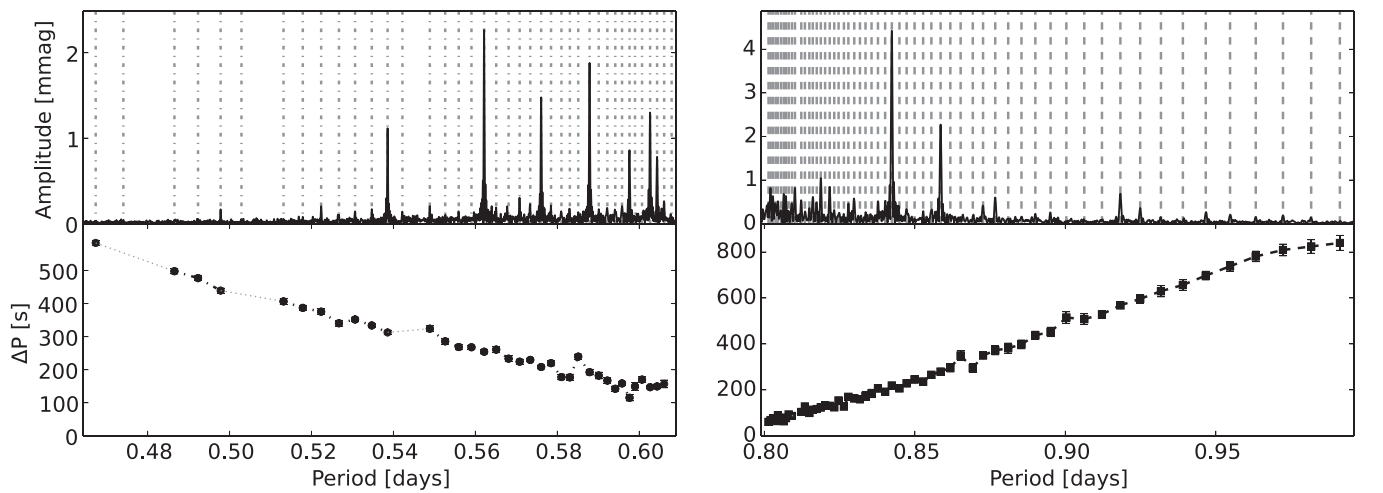


Figure 57. The period spacing patterns of KIC 11907454.

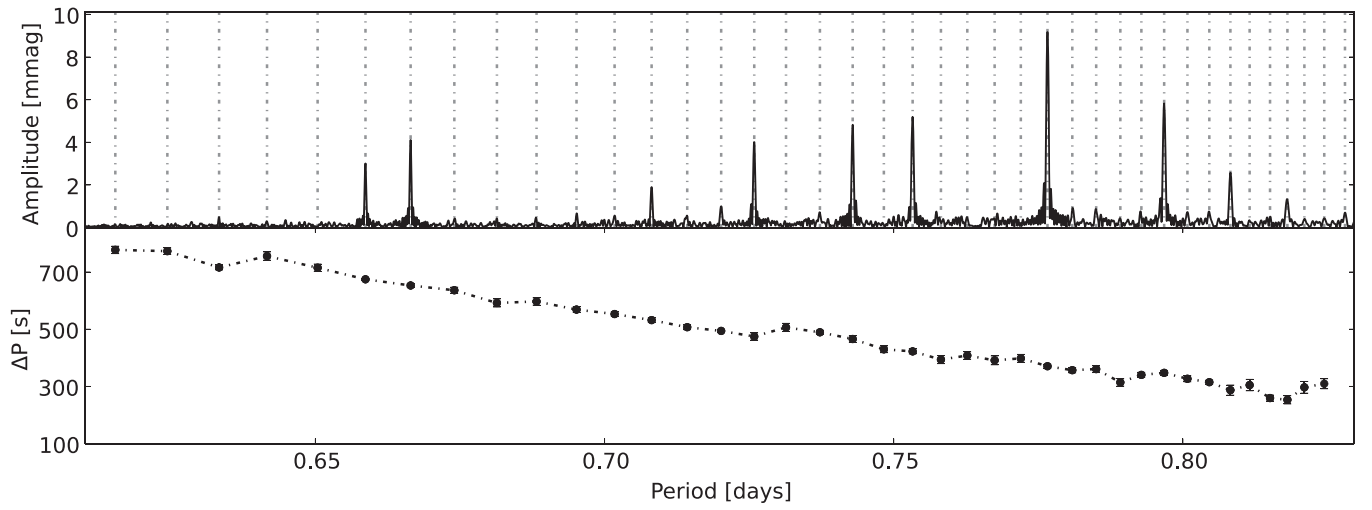


Figure 58. The period spacing patterns of KIC 11917550.

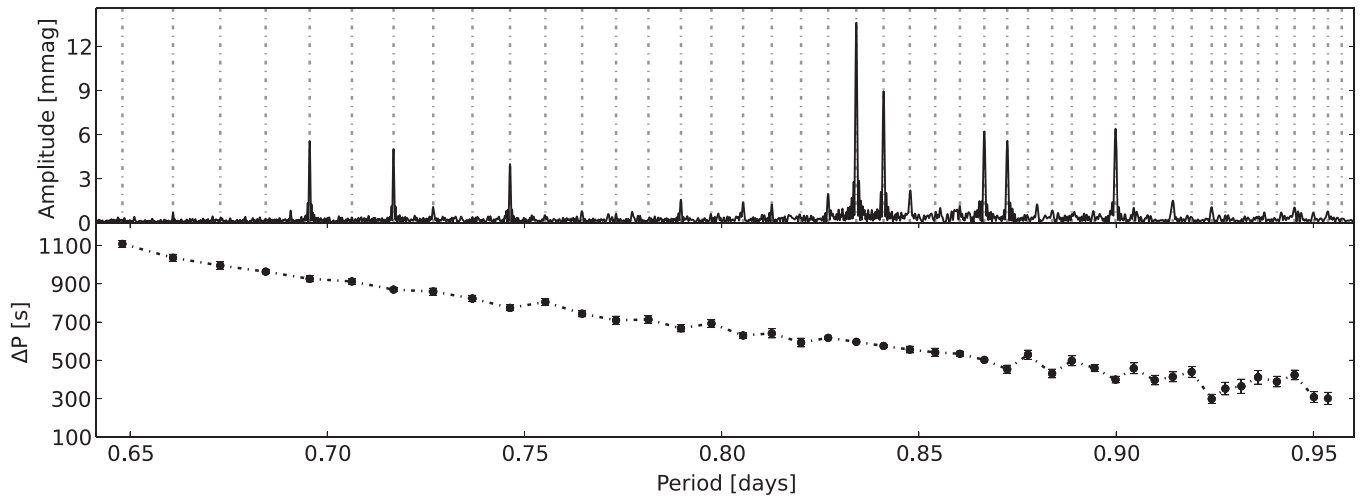


Figure 59. The period spacing patterns of KIC 11920505.

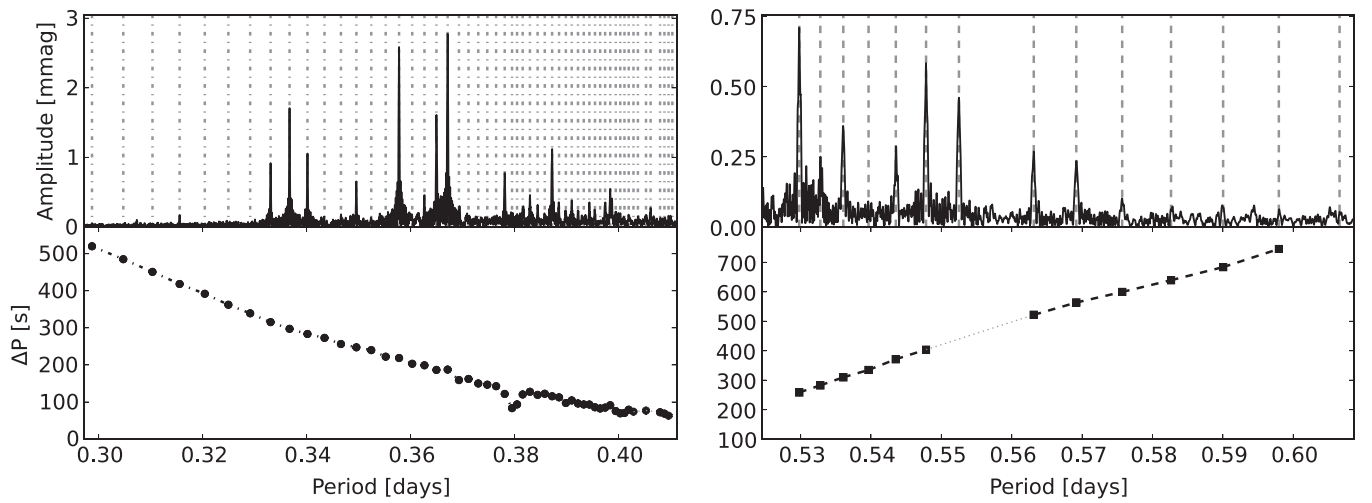


Figure 60. The period spacing patterns of KIC 12066947.

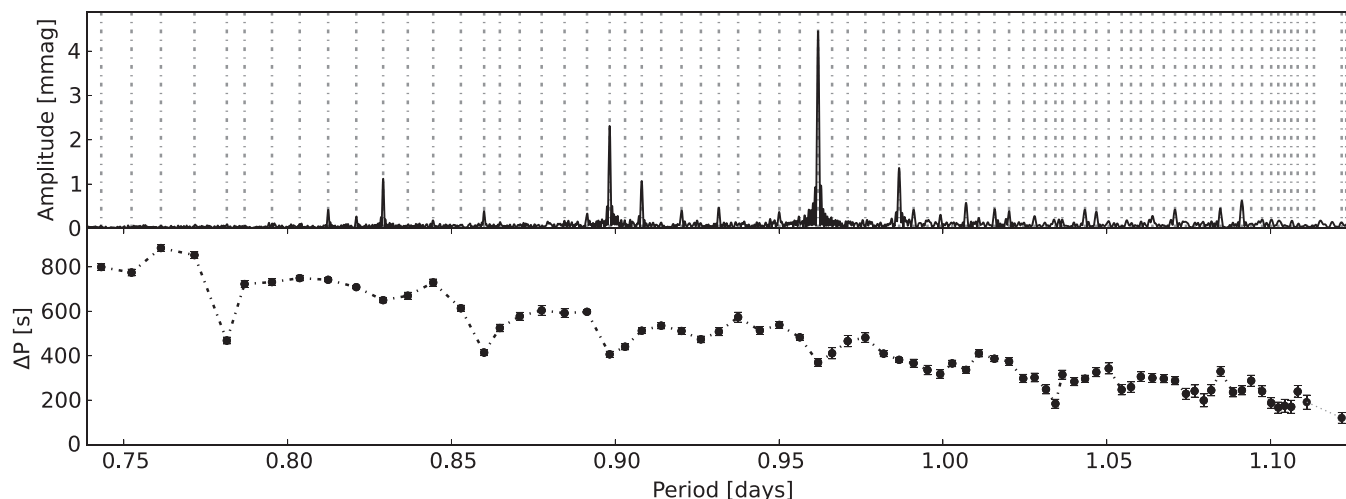


Figure 61. The period spacing patterns of KIC 12458189.

REFERENCES

- Aerts, C., Christensen-Dalsgaard, J., & Kurtz, D. W. 2010, *Asteroseismology*, Astronomy and Astrophysics Library (Berlin, Heidelberg: Springer)
- Aerts, C., Molenberghs, G., Kenward, M. G., & Neiner, C. 2014, *ApJ*, **781**, 88
- Balona, L. A., Guzik, J. A., Uytterhoeven, K., et al. 2011, *MNRAS*, **415**, 3531
- Bedding, T. R., Murphy, S. J., Colman, I. L., & Kurtz, D. W. 2014, *arXiv:1411.1883*
- Bouabid, M.-P., Dupret, M.-A., Salmon, S., et al. 2013, *MNRAS*, **429**, 2500
- Bouabid, M.-P., Montalbán, J., Miglio, A., et al. 2011, *A&A*, **531**, A145
- Bradley, P. A., Guzik, J. A., Miles, L. F., et al. 2015, *AJ*, **149**, 68
- Breger, M., Fossati, L., Balona, L., et al. 2012, *ApJ*, **759**, 62
- Chapellier, E., Mathias, P., Weiss, W. W., le Contel, D., & Debosscher, J. 2012, *A&A*, **540**, A117
- Crowe, R. A., & Mitalas, R. 1982, *A&A*, **108**, 55
- Cuyper, J., Aerts, C., De Cat, P., et al. 2009, *A&A*, **499**, 967
- De Cat, P., & Aerts, C. 2002, *A&A*, **393**, 965
- Debosscher, J., Aerts, C., Tkachenko, A., et al. 2013, *A&A*, **556**, A56
- Dupret, M.-A., Grigahcène, A., Garrido, R., Gabriel, M., & Scuflaire, R. 2005, *A&A*, **435**, 927
- Gray, D. F. 1992, *The Observation and Analysis of Stellar Photospheres* (Cambridge: Cambridge Univ. Press)
- Grigahcène, A., Antoci, V., Balona, L., et al. 2010, *ApJL*, **713**, L192
- Guzik, J. A., Kaye, A. B., Bradley, P. A., Cox, A. N., & Neuforge, C. 2000, *ApJL*, **542**, L57
- Kaye, A. B., Handler, G., Krisciunas, K., Poretti, E., & Zerbi, F. M. 1999, *PASP*, **111**, 840
- Koch, D. G., Borucki, W. J., Basri, G., et al. 2010, *ApJL*, **713**, L79
- Kupka, F., Piskunov, N., Ryabchikova, T. A., Stempels, H. C., & Weiss, W. W. 1999, *A&AS*, **138**, 119
- Kurtz, D. W., Saio, H., Takata, M., et al. 2014, *MNRAS*, **444**, 102
- Lehmann, H., Tkachenko, A., Semaan, T., et al. 2011, *A&A*, **526**, A124
- Miglio, A., Montalbán, J., Noels, A., & Eggenberger, P. 2008, *MNRAS*, **386**, 1487
- Mitalas, R. 1972, *ApJ*, **177**, 693
- Morel, T., Butler, K., Aerts, C., Neiner, C., & Briquet, M. 2006, *A&A*, **457**, 651
- Murphy, S. J., Bedding, T. R., Shibahashi, H., Kurtz, D. W., & Kjeldsen, H. 2014, *MNRAS*, **441**, 2515
- Murphy, S. J., Shibahashi, H., & Kurtz, D. W. 2013, *MNRAS*, **430**, 2986
- Pápics, P. I., Briquet, M., Baglin, A., et al. 2012, *A&A*, **542**, A55
- Pápics, P. I., Moravveji, E., Aerts, C., et al. 2014, *A&A*, **570**, A8
- Raskin, G., van Winckel, H., Hensberge, H., et al. 2011, *A&A*, **526**, A69
- Saio, H., Kurtz, D. W., Takata, M., et al. 2015, *MNRAS*, **447**, 3264
- Schwarzenberg-Czerny, A. 2003, in *ASP Conf. Ser. 292, Interplay of Periodic, Cyclic and Stochastic Variability in Selected Areas of the H-R Diagram*, ed. C. Sterken (San Francisco, CA: ASP), 383
- Shibahashi, H., & Kurtz, D. W. 2012, *MNRAS*, **422**, 738
- Shulyak, D., Tsymbal, V., Ryabchikova, T., Stütz, C., & Weiss, W. W. 2004, *A&A*, **428**, 993
- Silva Aguirre, V., Ballot, J., Serenelli, A. M., & Weiss, A. 2011, *A&A*, **529**, A63
- Tassoul, M. 1980, *ApJS*, **43**, 469
- Tkachenko, A., Aerts, C., Yakushevkin, A., et al. 2013a, *A&A*, **556**, A52
- Tkachenko, A., Lehmann, H., Smalley, B., Debosscher, J., & Aerts, C. 2012, *MNRAS*, **422**, 2960
- Tkachenko, A., Lehmann, H., Smalley, B., & Uytterhoeven, K. 2013b, *MNRAS*, **431**, 3685
- Tkachenko, A., van Reeth, T., Tsymbal, V., et al. 2013c, *A&A*, **560**, A37
- Townsend, R. H. D. 2000, *MNRAS*, **319**, 289
- Townsend, R. H. D. 2003, *MNRAS*, **343**, 125
- Tsymbal, V. 1996, in *ASP Conf. Ser. 108, M.A.S.S. Model Atmospheres and Spectrum Synthesis*, ed. S. J. Adelman, F. Kupka, & W. W. Weiss (San Francisco, CA: ASP), 198
- Uytterhoeven, K., Moya, A., Grigahcène, A., et al. 2011, *A&A*, **534**, A125
- Van Reeth, T., Tkachenko, A., Aerts, C., et al. 2015, *A&A*, **574**, A17