



Erratum: “Observational Signatures of Planets in Protoplanetary Disks. I. Gaps Opened by Single and Multiple Young Planets in Disks” (2015, ApJ, 809, 93)

Ruobing Dong^{1,2,5}, Zhaohuan Zhu^{3,5}, and Barbara Whitney⁴

¹ Nuclear Science Division, Lawrence Berkeley National Lab, Berkeley, CA 94720; rdong2013@berkeley.edu

² Department of Astronomy, University of California at Berkeley, Berkeley, CA 94720

³ Department of Astrophysical Sciences, Princeton University, Princeton, NJ 08544

⁴ Astronomy Department, University of Wisconsin-Madison, 475 N. Charter St., Madison, WI 53706, USA

Received 2017 May 16; published 2017 June 14

A figure is missing in the original manuscript. In the Appendix, paragraph 2, first sentence: “The raw images at 10 μm and 100 μm for Models $1 \times 0.2 M_J$, $1 \times 1 M_J$, $4 \times 1 M_J$, and $4 \times 2 M_J$ are shown in Figure 11 from viewing angles $\theta = 0^\circ$ and 45° .” The figure should actually be a missing Figure 13, as shown below.

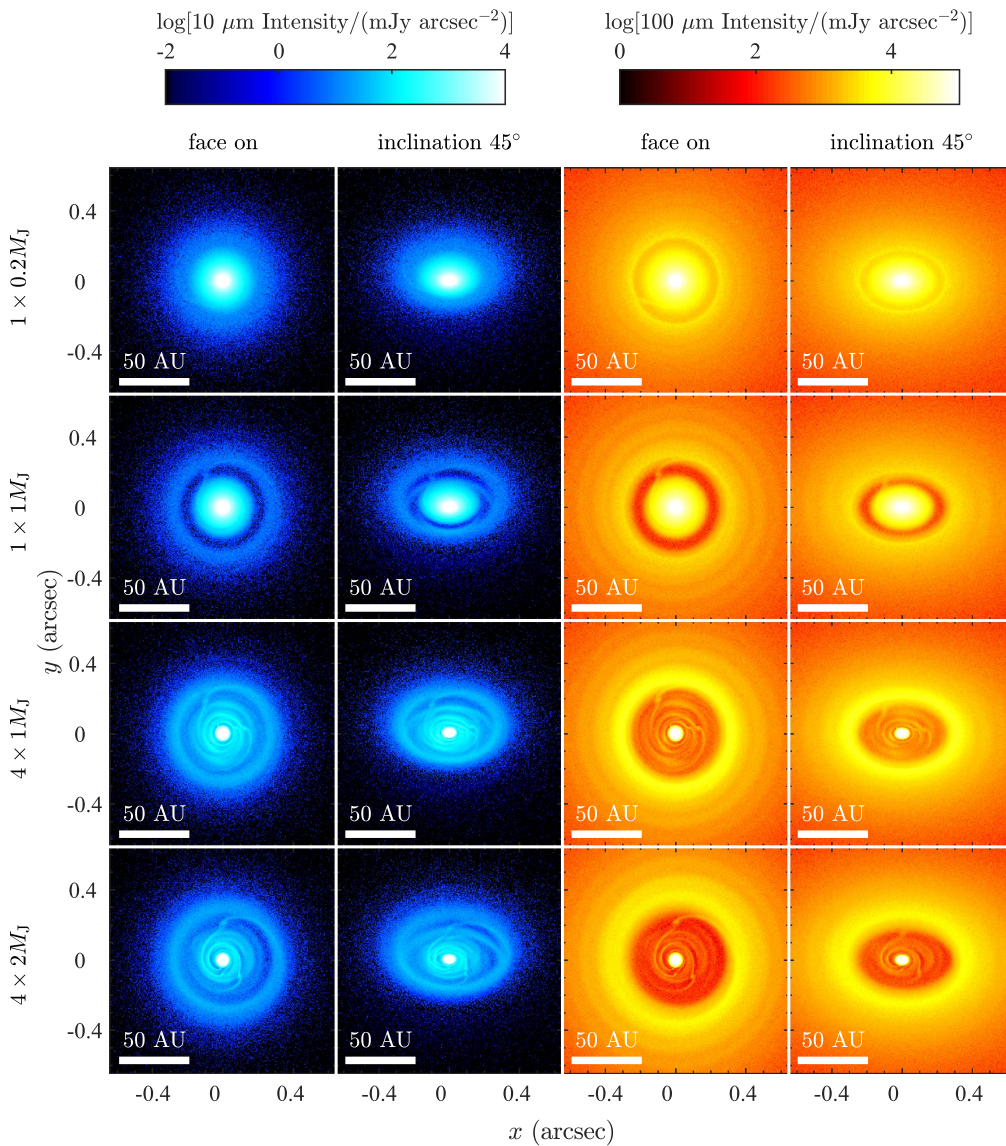


Figure 1. Raw 10 μm intensity images (left two columns) and 100 μm intensity images (right two columns) for our models (model names labeled on the left) at viewing angles $\theta = 0^\circ$ and 45° . At 10 μm , gaps appear to be deeper than at 100 μm , and the shadow cast by the inner disk is visible on the outer gap wall in the inclined disk images.

⁵ Hubble Fellow.