

LETTER • OPEN ACCESS

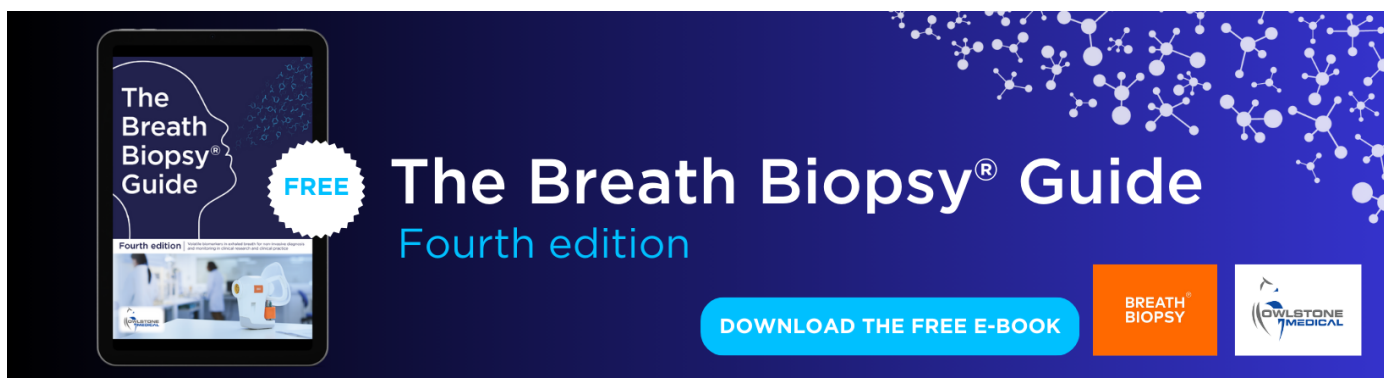
Is the ozone climate penalty robust in Europe?

To cite this article: Augustin Colette *et al* 2015 *Environ. Res. Lett.* **10** 084015

View the [article online](#) for updates and enhancements.

You may also like

- [Modes of treating pre-sowing grain seeds with ozone](#)
I V Baskakov, V I Orobinsky, A M Gievsky et al.
- [Freon's Destroy the Stratosphere](#)
Mustafa Ali Al-Sharoot
- [A Mechanistic Investigation of Electrochemical Ozone Production Using Nickel and Antimony Doped Tin Oxide in Non-Aqueous Electrolytes](#)
Rayan Alaufey and Maureen H. Tang



The Breath Biopsy® Guide
Fourth edition

FREE

DOWNLOAD THE FREE E-BOOK

BREATH BIOPSY

OWLSTONE MEDICAL

Environmental Research Letters



LETTER

Is the ozone climate penalty robust in Europe?

OPEN ACCESS

RECEIVED
17 February 2015

REVISED
17 June 2015

ACCEPTED FOR PUBLICATION
1 July 2015

PUBLISHED
18 August 2015

Content from this work
may be used under the
terms of the [Creative
Commons Attribution 3.0
licence](#).

Any further distribution of
this work must maintain
attribution to the
author(s) and the title of
the work, journal citation
and DOI.



Augustin Colette¹, Camilla Andersson², Alexander Baklanov³, Bertrand Bessagnet¹, Jørgen Brandt⁴, Jesper H Christensen⁴, Ruth Doherty⁵, Magnuz Engardt², Camilla Geels⁴, Christos Giannakopoulos⁶, Gitte B Hedegaard⁴, Eleni Katragkou⁷, Joakim Langner², Hang Lei⁸, Astrid Manders⁹, Dimitris Melas¹⁰, Frédéric Meleux¹, Laurence Rouil¹, Mikhail Sofiev¹¹, Joana Soares¹¹, David S Stevenson⁵, Maria Tombrou-Tzella¹², Konstantinos V Varotsos^{12,6} and Paul Young¹³

¹ Institut National de l'Environnement Industriel et des Risques (INERIS), Verneuil-en-Halatte, France

² Swedish Meteorological and Hydrological Institute (SMHI), Norrköping, Sweden

³ Danish Meteorological Institute, Lyngbyvej 100, DK 2100, København Ø, Denmark

⁴ Aarhus University, Department of Environmental Science, Frederiksborgvej 399, DK 4000 Roskilde, Denmark

⁵ School of GeoSciences, University of Edinburgh, U K

⁶ Institute for Environmental Research and Sustainable Development, National Observatory of Athens, Athens, Greece

⁷ Department of Meteorology and Climatology, School of Geology, Aristotle University of Thessaloniki, Thessaloniki, Greece

⁸ National Oceanic and Atmospheric Administration (NOAA), USA

⁹ Netherlands Organisation for Applied Scientific Research (TNO), Delft, The Netherlands

¹⁰ Laboratory of Atmospheric Physics, School of Physics, Aristotle University of Thessaloniki, Thessaloniki, Greece

¹¹ Finnish Meteorological Institute, PO Box 503, FI 00101 Helsinki, Finland

¹² Division of Environmental Physics and Meteorology, National and Kapodistrian University of Athens, Athens, Greece

¹³ Lancaster Environment Centre, Lancaster University, Lancaster, U K

E-mail: augustin.colette@ineris.fr

Keywords: pollution, climate change, ozone

Abstract

Ozone air pollution is identified as one of the main threats bearing upon human health and ecosystems, with 25 000 deaths in 2005 attributed to surface ozone in Europe (IIASA 2013 *TSAP Report* #10). In addition, there is a concern that climate change could negate ozone pollution mitigation strategies, making them insufficient over the long run and jeopardising chances to meet the long term objective set by the European Union Directive of 2008 (*Directive 2008/50/EC of the European Parliament and of the Council of 21 May 2008*) (60 ppbv, daily maximum). This effect has been termed the ozone climate penalty. One way of assessing this climate penalty is by driving chemistry-transport models with future climate projections while holding the ozone precursor emissions constant (although the climate penalty may also be influenced by changes in emission of precursors). Here we present an analysis of the robustness of the climate penalty in Europe across time periods and scenarios by analysing the databases underlying 11 articles published on the topic since 2007, i.e. a total of 25 model projections. This substantial body of literature has never been explored to assess the uncertainty and robustness of the climate ozone penalty because of the use of different scenarios, time periods and ozone metrics. Despite the variability of model design and setup in this database of 25 model projection, the present meta-analysis demonstrates the significance and robustness of the impact of climate change on European surface ozone with a latitudinal gradient from a penalty bearing upon large parts of continental Europe and a benefit over the North Atlantic region of the domain. Future climate scenarios present a penalty for summertime (JJA) surface ozone by the end of the century (2071–2100) of at most 5 ppbv. Over European land surfaces, the 95% confidence interval of JJA ozone change is [0.44; 0.64] and [0.99; 1.50] ppbv for the 2041–2070 and 2071–2100 time windows, respectively.

Introduction

The atmospheric pathways through which climate change can bear upon regional ozone pollution can be broadly divided in three categories: (1) its impact on the availability of ozone precursors, (2) its impact on the dynamical and photochemical processes governing ozone production, dispersion and sinks and (3) its impact on the tropospheric background, through enhanced ozone destruction and meteorological/dynamical processes such as stratosphere-troposphere exchanges [2, 18].

The list of climate processes that have been found to contribute to increase ozone pollution in Europe includes: (i) the effect of increasing temperature and solar radiation on increasing biogenic isoprene emissions [7–9, 11–16, 19–21]. But a possible inhibition of isoprene emission with increasing CO₂ concentration has also been pointed out [22] to the extent that a possible cancellation of temperature and CO₂ effects could occur [23]; (ii) the direct impact of temperature rises on the kinetics of atmospheric chemistry [9, 11, 13, 15–17, 20, 21], and—in particular—on the faster thermal decomposition of peroxyacetyl nitrate [21]; (iii) the direct impact of solar radiation on photochemistry resulting from changes in cloud cover [7, 9, 11, 13, 14, 21] that leads to enhanced photolysis rates [11, 13, 24], particularly that of NO₂ which favours ozone formation [25]; (iv) the enhanced stratospheric contribution to surface ozone as a result of the increased Brewer Dobson circulation [26–30].

There are also regions where ozone decreases in the future, especially over Northern Europe [13, 16, 31], here the underlying processes include: (i) increases in water vapour that lead to a greater production of the hydroxyl radical (OH) which influences the ozone formation cycle in several ways [9, 11, 15, 16, 21]. Increased primary OH production implies increased ozone destruction (as it is produced through ozone photolysis and subsequent reaction with water vapour), which can reduce ozone concentrations. This is the dominant effect in low NO_x regions and has a substantial impact on background tropospheric ozone change projected in global models [4, 10]. Increased OH can also react with NO₂ to form HNO₃ when the NO_x/VOC ratio is high, thereby also reducing the ozone production; (ii) reduced solar radiation, as a result of increased cloudiness affecting photolysis [14, 31]; (iii) the most commonly reported impact of climate on biogenic emission point towards an increased ozone production, isoprene nitrate can also sequester nitrogen oxides [2, 5].

Some processes can also act in both directions depending on the meteorological conditions and chemical environment: (i) changes in atmospheric boundary layer (ABL) depth alter the turbulent mixing of ozone precursors [2]. The dilution induced when the convective mixing increases in deeper ABL can result in decreasing ozone concentrations. But

depending on the chemical regime and local importance of the NO_x titration, increases of ABL can lead to increases in surface ozone production; (ii) land use changes could affect ozone through the role of vegetation in emitting precursors but also in the dry deposition sink [32], although this factor is usually ignored in existing projections; (iii) using an ozone dry deposition model that accounts for changes in vegetation and meteorology showed that future decrease could occur [12, 14]. Changes in snow cover and sea ice were also reported to potentially alter ozone deposition [8, 12, 33]; (iv) finally, changes in synoptic weather patterns can also have an impact on ozone pollution as a benefit or a penalty [7, 8, 15, 21, 34]. The potential increase in the frequency and severity of heat waves under a warming climate is a concern with the 2003 European heat-wave serving as an example of potential impacts [35].

There are two approaches to assess the magnitude of the climate penalty bearing upon surface ozone. A first approach consist in investigating correlations between daily ozone and temperature (either observed or modelled by means of short-term sensitivity simulations [6, 36]), although one may argue that this constitutes a temperature penalty rather than a climate penalty. Here we focus on a second approach that uses chemistry-transport and chemistry-climate models (CTMs and CCMs) under changing climate conditions. In such work, all anthropogenic emission of pollutants are kept constant (including short lived climate forcers, such as methane) but the chemistry model is forced or nudged within meteorological fields representative of the future climate, hence taking into account all future climate changes, including but not limited to temperature. Note that present day levels of air pollutants are generally used, whereas the ozone climate penalty is likely to change in magnitude with the projected decreases of emissions [6, 7]. An overall detrimental impact of climate change on ozone concentrations is consistently found, but it remains difficult to quantitatively assess the robustness of the magnitude of this penalty. Differences in scenarios, time periods, model spatial resolution, and not least ozone metrics make it difficult to compare published work in the literature. In order to assess this robustness we have compiled all the studies that have addressed the ozone climate penalty for Europe published between 2007 and 2014, with only the criteria that the results would cover most of the European continent and were based on multi-annual simulations. The selected studies are based on seven regional and nine global chemistry-transport models, which are in turn driven by the meteorology from 7 different global climate models run according to seven climate scenarios for several periods of the 21st century. All projections use present-day emission of ozone precursors from various sources [37]. The spread of the present ensemble is therefore reasonably large.

Methods

The specification of model experiments included in the present study is as follows and also summarized on the schematic of table 1.

An ensemble of three global coupled climate-chemistry models: STOC-HadAM3 UM-CAM, GISS simulating the present 2000–2004 and future 2095–2099 climate according to SRES A2 scenario and air pollutant emissions for the year 2001 based on EDGAR3.2 [9].

Ensemble of eight global coupled climate-chemistry models: CESM-CAM-superfast, GFDL-AM3, GISS-E2-R, MIROC-CHEM, MOCAGE, NCAR-CAM3.5, STOC-HadAM3, UM-CAM, simulating the present 2000–2009 and two future (2030–2040 and 2090–2100) climate according to the RCP8.5 scenario and air pollutant emissions for the year 2005 [10]. These simulations constitute a subset of sensitivity experiments performed in the framework of ACCMIP [38], holding air pollutant emissions (including CH₄) constant.

Chimere Regional Chemistry-Transport Model (RCTM) at 0.5° driven by the RegCM Regional Climate Model (RCM) itself forced by the Global Climate Model (GCM) HadAM3H with A2 and B2 scenarios for 1960–1990 and 2071–2100; air pollutant emissions according to EMEP for 2002 and boundary conditions from the MOZART model for 2002 [11].

MATCH RCTM at 0.44° driven by RCA3 RCM forced by ECHAM4 GCM with A2 scenarios for 1961–1990 and 2071–2100, air pollutant emissions according to EMEP for 2000 and monthly varying ozone and precursors concentration at the boundaries representative for the late 1990s [12].

MATCH RCTM at 0.44° driven by RCA3 RCM forced by either ECHAM5 or HadCM3 both using scenario A1B for 1990–2070, although HadCM3 runs extend to 2100. Air pollutant emissions are RCP4.5 for 2000 and gradually increasing ozone levels at the boundaries [14].

CAMx RCTM at 50 km resolution driven with RegCM3 RCM itself forced by ECHAM5 GCM using the A1B scenario for 1991–2000, 2041–2050 and 2091–2100, EMEP air pollutant emissions for 2000 and constant and uniform chemical boundary conditions [13].

CHIMERE RCTM at 0.5° resolution driven by the WRF RCM forced by the IPSL-CM5A-MR GCM for 1995–2004 and 2045–2054 with the RCP2.6 and 8.5 and using GEA air pollutant emissions for 2005. Additional simulations with a slightly different setup for RCP4.5 and RCP8.5 from 2031 to 2100, ECLIPSE-V4a air pollutant emissions, and the IPSL-INNERIS member of Euro-Cordex are also included. Both used constant chemical boundary conditions from the INCA model [7].

An ensemble of four CTMs: one Hemispheric model: DEHM (Danish Eulerian Hemispheric Model, at 150km resolution), and three regional models:

EMEP-MSC-W [39] (European Monitoring and Evaluation Programme, Meteorological Synthesizing Centre—West, at 0.44° resolution), MATCH (Multi-scale Atmospheric Transport and Chemistry Model, at 0.44°), SILAM (System for Integrated modelling of Atmospheric composition, 0.44°) and one coupled regional chemistry-climate model: EnvClimA at 50 km. All chemistry models are driven with climate fields from the GCM ECHAM5, the RCTMs use a dynamically downscaled version with the RCM RCA3. The climate scenario is SRES A1B for 2000–2009 and 2040–2049. Air pollutant emissions are those of the RCP4.5 for 2000. The chemical boundary conditions for all models were obtained from the DEHM simulation for a subset of core species [15].

DEHM Hemispheric CTM at 150 km driven by ECHAM5 GCM based on A1B for 1990–1999 and 2090–2099 and RCP4.5 emissions for 2005 [8].

GEOS-CHEM GCTM at 4° × 5° resolution driven by the NASA/GISS III GCM based on A1B for 1999–2001 and 2049–2051 and SRES air pollutant emissions for the year 2000 [16].

LOTOS-EUROS RCTM at 0.5 × 0.25° driven by the RCM RACMO2 forced by either ECHAM5r or MIROC GCM with scenario A1B for 1989–2009 and 2040–2060, air pollutant emissions as in TNO-MACC 2005 and constant chemical boundary conditions [17].

The total number of models and simulated years for each time period and scenario is given in the lower right panel of figure 3. Since each model did not rely on identical time periods, the panel also provides the number of simulated years. Note that some models performed several experiments and therefore delivered multiple versions of the historical period, hence the higher number of historical members than total number of participating models. All models delivered monthly data of the lowermost model level which were interpolated bilinearly on a spatial grid typical for regional models with 0.5° resolution.

The model ensemble was evaluated by comparison with surface ozone measurements for the historical period. We used a total of 544 rural stations in the Airbase repository of the European Environment Agency that report at least 75% of daily data for at least 5 years over the 1990–2012 period. The average bias of the composite at each station and the average performance of each individual model are shown in figure 1. The mean bias, over all sites in Europe, for summertime average ozone of the composite is +6.9 ppbv with a standard deviation of average biases across the 25-model ensemble of 6.7 ppbv. Generally there is less overestimation of summertime-mean ozone over Southern than Northern Europe. The spatial correlation of the composite is 0.54 (with a standard deviation of 0.12).

Most of the work included here is based on the climate scenarios used to inform the Third and Fourth Assessment Reports of the IPCC as documented in the Special Report on Emission Scenarios (SRES) [40].

Table 1. Models, climate scenarios and time horizons. The first couple of rows are for online coupled Chemistry Transport Models which are standalone. The lower row are connected: the vertical columns show the link between models offline coupled with each other: global Climate Models (GCM) that either (upwards arrow) drive directly Global or Hemispheric Chemistry Transport Model (G/H-CTM), or (downward arrow) are downscaled dynamically with Regional Climate Models (RCM) that drive the Regional Chemistry Transport Model.

GCM	HTAP [9] STOC-HadAM3 (5° × 5°), UM-CAM (3.75° × 2.5°), GISS (5° × 4°)		A2 2000–2004/2095–2099	
	ACCMIP [10] CESM-CAM-superfast (1.875° × 2.5°), GFDL-AM3 (2° × 2.5°), GISS-E2-R (2° × 2.5°), MIROC-CHEM (2.8° × 2.8°), MOCAE (2° × 2°), NCAR-CAM3.5 (1.875° × 2.5°), STOC-HadAM3 (5° × 5°), UM-CAM (2.5° × 3.75°)		RCP8.5 2000–2009/2030–2040/2090–2100	
G/H-CTM	DEHM (150 km) [8]	A1B 1990–1999/2090–2099 A1B 1990–1999/2040–2049		
	GEOS-CHEM (4° × 5°) [47]			A1B 1999–2001/ 2049–2051
RCM	HadAM3H [48] (CMIP3)	ECHAM4/5 [49] (CMIP3)	HadCM3 [50] (CMIP3)	MIROC [51]+ECHAM5 (CMIP3)
				IPSL-CM5A-MR [52] (CMIP5)
				NASA/GISS [53] (CMIP3)
	RegCM [54]	RCA3 [55]	RACMO2 [56]	WRF [57]
RCTM	Chimere (0.5°) [58]	A2,B2 1960–1990/2071–2100		
				RCP2.6, 8.5/ 1995–2004/2045–2054 RCP4.5, 8.5 1986–2005/2031–2100
	MATCH (0.44°) [59]	A1B 1990–2100	A1B 1990–2100	A1B 1990–2100
	CAMx (50 km) [60]	A1B 1991–2000/2041– 2050/2091–2100		
	EMEP-MSCW 0.44° [39] SILAM (0.44°) [61] EnvClimA (50 km)		A1B 2000–2009/2040–2049	
	LOTOS-EUROS (0.5 × 0.25°) [62]			A1B 1989–2009/2040–2060

Arranged by increasing level of global warming reached in 2100, these scenarios are: B1, B2, A1B, A2. Some models used the more recent Representative Concentrations Pathways [41], used to inform the IPCC Fifth Assessment Report. These are known as RCP2.6, RCP4.5 and RCP8.5, which yield a radiative forcing of 2.6, 4.5 and 8.5 W m^{−2} by the end of the 21st century, respectively. There is some similarity between, respectively, RCP4.5 and SRES B1, and RCP8.5 and SRES A2, but RCP2.6 has no real equivalent in the SRES scenarios. Whereas the evolution of short lived climate forcers were taken into account to project future climate, their impact on atmospheric chemistry was ignored in the simulations presented here.

Results

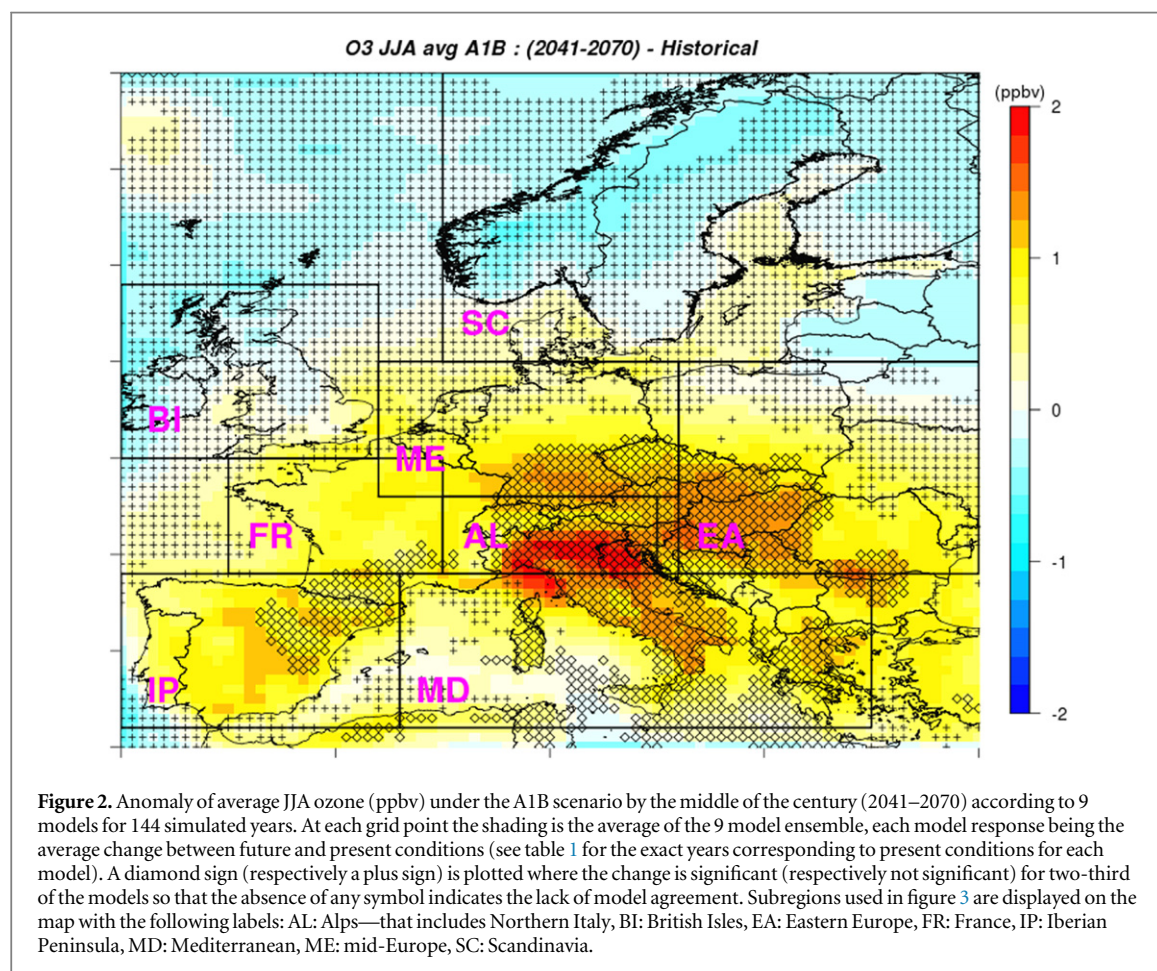
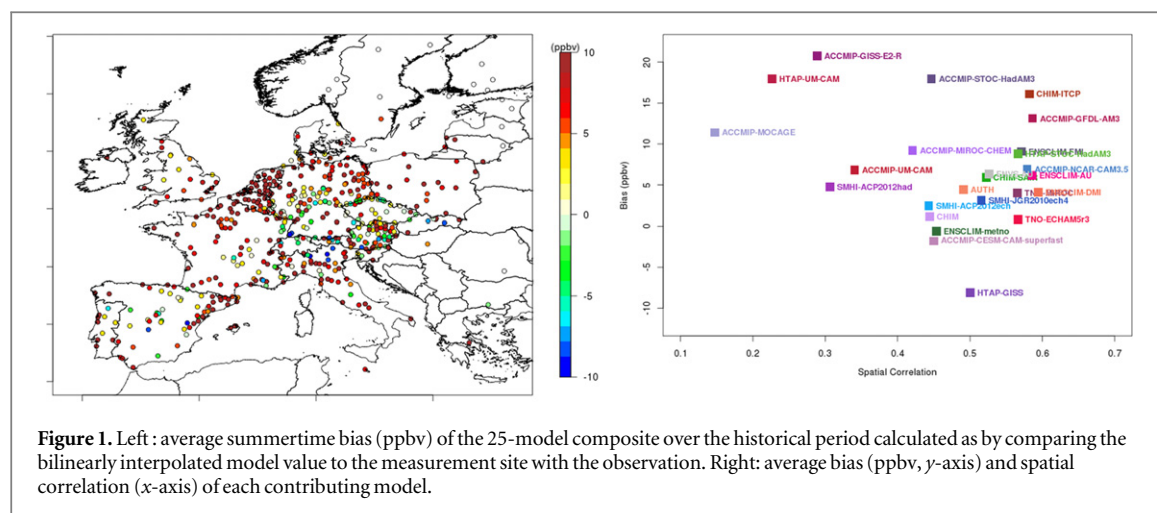
Figure 1 shows the map of the ozone climate penalty for the available projections using the A1B scenario, representing total of 144 modelled years. The average of the nine model ensemble is shown. For each model the climate penalty is expressed as the JJA ozone anomaly for the 2041 to 2070 time period compared to historical levels and the significance of the climate penalty is assessed with a student t-test with a 95% confidence level considering each year is independent. The robustness of the climate penalty is subsequently indicated when two-third of the models agree either on the significance of the change, or on its non-significance.

The climate penalty, which is of the order of +1 to +2 ppbv, is robust and statistically significant over large parts of Southern and Central Europe. By the middle of the century, this penalty exceeds +1 ppbv

over Spain and Italy. A decrease over the northern British Isles and Scandinavia is found to extend to the north-eastern Atlantic.

Averages of the evolution of the climate penalty for different time horizon across various regions of Europe are given in figure 3. The degree of freedom of boxplots in figure 3 is the number of modelled years for the corresponding scenario and time period. For each year, the anomaly is the difference between JJA average of that year minus the average of JJA values over the historical period for the corresponding model. The distributions include various models and simulated years to capture model spread (although that spread may not capture the full model uncertainty [42]) and inter-annual meteorological variability. The different scenarios are separated in order to acknowledge that they convey an uncertainty of a different nature. However, this approach carries a risk of overweighting models with more simulated years. In order to assess that risk, we also display on the boxplot the median of model averages that are always very close to the median of all modelled years.

Considering the whole range of scenarios, we find that the 95% confidence interval of climate penalty on JJA average ozone over all European land surfaces within the latitudes 30 °N and 60 °N and the longitudes 20 °W and 40 °E is [0.44; 0.64] and [0.99; 1.50] ppbv for the 2041–2070 and 2071–2100 time windows, respectively. The impact of climate change on summertime ozone is indeed significant for most scenarios, except for the near future (2011–2040). For the majority of regions and scenarios, climate change acts to increase summertime ozone (AL, EA, FR, IP, MD, ME). This is especially the case for southern, western and central Europe, although decreases are found

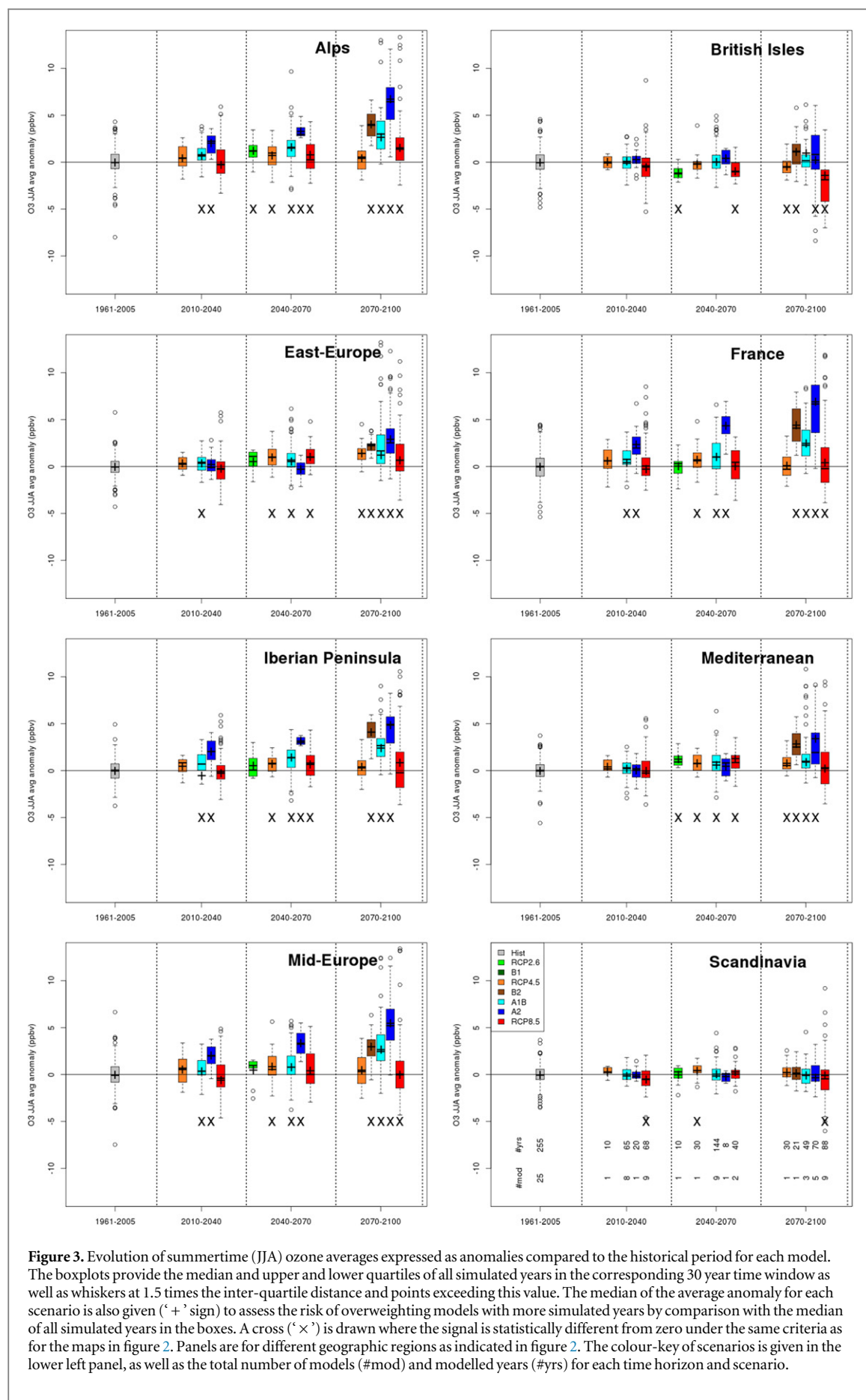


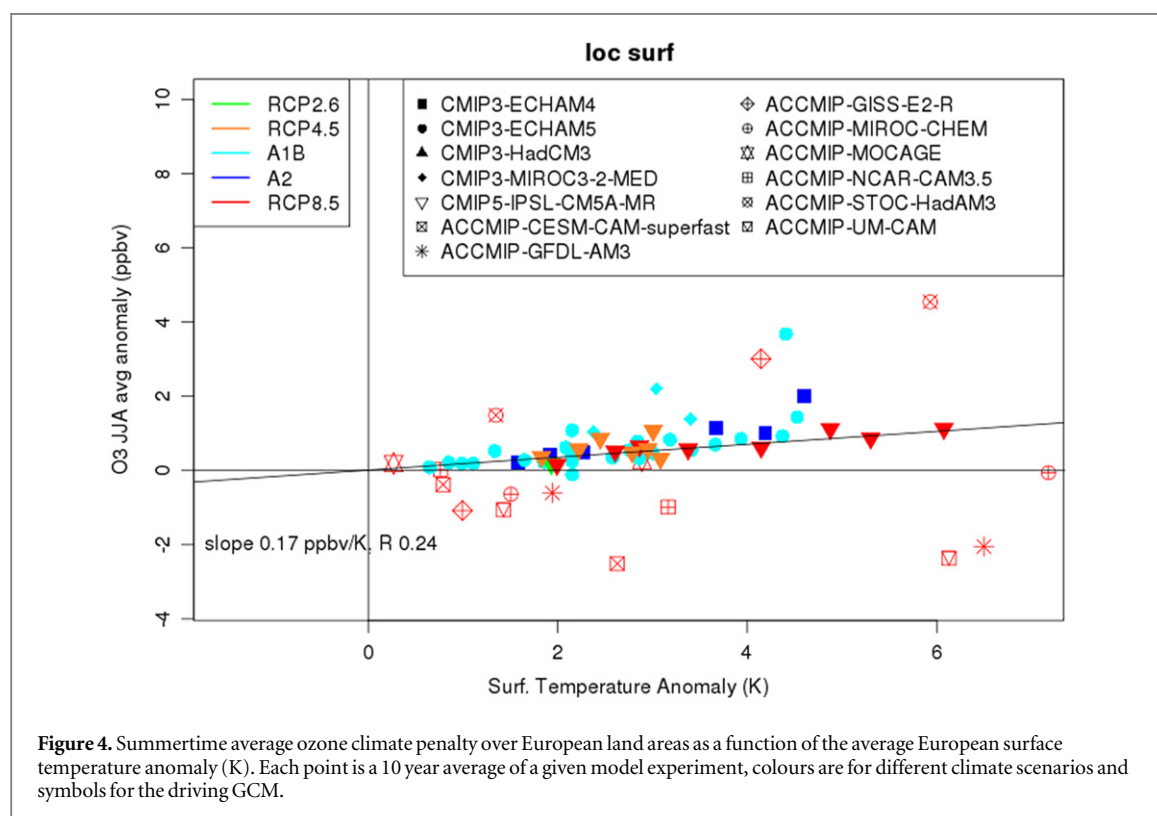
locally for northern parts such BI and SC, probably in relation with changes in background ozone [10]. The increases are variable in space, time, and across scenarios but remain in the 0–5 ppbv range, except for a few more dramatic increase up to 7.5 ppbv.

For the regions where there is a climate penalty, the magnitude of that penalty tends to broadly increase together with the amount of global warming in the corresponding scenarios. The results obtained with the RCP8.5 constitute a striking exception to that

feature where changes are often of a smaller magnitude than for the other scenarios, or even not significant. The more important contribution of global models (many of which show a decline of lower tropospheric ozone [9, 10]) in the ensemble of simulation for the RCP8.5 might play a role here, as discussed further below.

The ozone climate penalty averaged over European land surfaces as a function of the average European surface temperature anomaly is displayed in figure 4. The purpose of this figure is to assess whether





the European surface ozone climate penalty can be quantified for a given warming threshold, by comparing various scenarios and time horizons. As before, the ozone climate penalty is the difference of summertime (JJA) mean minus the historical summertime long-term average of the corresponding model. For each model, the penalty by time slices of 10 years is displayed in order to minimize the impact of inter annual variability. The temperature anomaly is computed with respect to the 1971–2000 average. Only CTMs or CCMs driven with GCM boundary conditions corresponding to major coordinated model inter-comparison projects are included (CMIP3, CMIP5, ACCMIP) [38, 43, 44].

The ozone climate penalty is again confirmed in the sense that, for this ensemble, the slope of the fit between European ozone and temperature is positive: 0.17 ppbv K^{-1} but the standard error is high (0.09 ppbv K^{-1}) and the slope cannot be considered as statistically significant with a p -value of 0.056. The correlation is only of 0.24, and ranges over the smaller sub-regions mentioned above from -0.28 (British Isles) to $+0.24$ (Eastern Europe). This lack of correlation between ozone and average European temperature is likely due to the important role of other meteorological parameters and their interactive effects of surface ozone [17].

Long range transport of ozone is also an important factor as illustrated by the much larger correlation with European mean surface temperature when excluding global (ACCMIP) models ($R = 0.59$, with a slope of 0.31 ppbv K^{-1}). The variability of the ozone climate penalty simulated over Europe by global models is

much larger, to the extent that climate benefits are sometimes shown [10]. This feature can be attributed to the larger role, in global models, of ozone destruction in oceanic low NO_x areas induced by the greater availability of OH related to increased water vapour concentrations. This effect might be overestimated in coastal areas compared to regional models because of their coarse resolution, but it is important that regional CTM take into account climate-induced changes in boundary conditions in future assessments [7].

As pointed out above, the impact of climate and land use change on biogenic emissions plays a role on the ozone penalty. We should however note that there are very important uncertainties for this, with a range of a factor of 5 reported for future isoprene emissions across a four-model ensemble [15]. In addition, while most of the models simulate the impact of temperature on biogenic emissions in a dynamical manner, none of them account for the isoprene-inhibiting role of increased CO_2 [22].

Conclusion

When aggregated over all European land surface, we find that the increase attributed to climate change on ozone summertime reaches $[0.99; 1.50] \text{ ppbv}$ by the end of the century. These numbers support the concern that the climate penalty could act against the efforts of mitigation. They are however small compared to the annual rate of ozone change observed since the middle of the 1990s with an order of magnitude of -1 ppbv yr^{-1} [45, 46]. The studies that explicitly compared the

magnitude of projected climate and anthropogenic emission changes all confirmed the larger impact of the later [7, 14, 16, 21]. We thus conclude that even if climate penalty is a reality for ozone pollution, its magnitude compared to recent trends and expected emission projections should not discourage from implementing ambitious mitigation measures.

Acknowledgments

This research was commissioned by the European Environmental Agency through its Topic Centre on Air Quality and Climate Mitigation. It benefited from the support to earlier projects: the European Union's Seventh Framework Programme (FP7/2007-2013) under grant agreements no. 282687 (ATOPICA), no. 282910 (ECLAIRE), no. 247708 (SUDPLAN), no. 282746 (IMPACT2C), no. 037005 (CECILIA); the US Environmental Protection Agency Science to Achieve Results (STAR) Program with simulations done with NOAA, DOE/NERSC and NCSA/UIUC supercomputing resources; SALUTAIR (French Primeval ADEME-MEDDE programme); ACHIA (ADEME) and computing resources of the TGCC/CCRT/CEA; Nordic Council of Ministers (EnsCLIM project no: KoL-10-04); the Swedish EPA through the research programmes CLEO and SCARP, and through the framework of the ERA-ENVHEALTH research programme ACCEPTED; Dutch Knowledge for Climate Programme; the European Union (European Social Fund—ESF) and Greek national funds through the Operational Program 'Education and Lifelong Learning' of the National Strategic Reference Framework (NSRF)—Research Funding Program: Heracleitus II. AUTH acknowledges EGI and HellasGrid for computing resources and technical support. Investing in knowledge society through the European Social Fund. The coordinated ACCMIP and HTAP exercises are also gratefully acknowledged.

References

- [1] IIASA 2013 Policy scenarios for the revision of the thematic strategy on air pollution *TSAP Report #10* International Institute for Applied System Analysis, Laxenburg, Austria
- [2] Jacob D J and Winner D A 2009 Effect of climate change on air quality *Atmos. Environ.* **43** 51–63
- [3] EC 2008 Ambient air quality and cleaner air for Europe *Directive 2008/50/EC of the European Parliament and of the Council of 21 May 2008* (Brussels: European Commission)
- [4] Wu S, Mickley L J, Leibensperger E M, Jacob D J, Rind D and Streets D G 2008 Effects of 2000–2050 global change on ozone air quality in the United States *J. Geophys. Res.: Atmos.* **113** D06302
- [5] Weaver C P et al 2009 A preliminary synthesis of modeled climate change impacts on US regional ozone concentrations *Bull. Am. Meteorol. Soc.* **90** 1843–63
- [6] Rasmussen D J, Hu J, Mahmud A and Kleeman M J 2013 The ozone-climate penalty: past, present, and future *Environ. Sci. Technol.* **47** 14258–66
- [7] Colette A et al 2013 European atmosphere in 2050, a regional air quality and climate perspective under CMIP5 scenarios *Atmos. Chem. Phys.* **13** 7451–71
- [8] Hedegaard G B, Christensen J H and Brandt J 2013 The relative importance of impacts from climate change versus emissions change on air pollution levels in the 21st century *Atmos. Chem. Phys.* **13** 3569–85
- [9] Doherty R M et al 2013 Impacts of climate change on surface ozone and intercontinental ozone pollution: a multi-model study *J. Geophys. Res.: Atmos.* **118** 3744–63
- [10] Stevenson D S et al 2013 Tropospheric ozone changes, radiative forcing and attribution to emissions in the atmospheric chemistry and climate model intercomparison project (ACCMIP) *Atmos. Chem. Phys.* **13** 3063–85
- [11] Meleux F, Solmon F and Giorgi F 2007 Increase in summer European ozone amounts due to climate change *Atmos. Environ.* **41** 7577–87
- [12] Andersson C and Engardt M 2010 European ozone in a future climate: Importance of changes in dry deposition and isoprene emissions *J. Geophys. Res.* **115** D02303
- [13] Katragkou E et al 2011 Future climate change impacts on summer surface ozone from regional climate-air quality simulations over Europe *J. Geophys. Res.* **116** D22307
- [14] Langner J, Engardt M and Andersson C 2012 European summer surface ozone 1990–2100 *Atmos. Chem. Phys.* **12** 10097–105
- [15] Langner J et al 2012 A multi-model study of impacts of climate change on surface ozone in Europe *Atmos. Chem. Phys.* **12** 10423–40
- [16] Varotsos K V, Giannakopoulos C and Tombrou M 2013 Assessment of the Impacts of climate change on European ozone levels *Water Air Soil Pollut.* **224** 1–13 C7—1596
- [17] Manders A M M, van Meijgaard E, Mues A C, Kranenburg R, van Ulft L H and Schaap M 2012 The impact of differences in large-scale circulation output from climate models on the regional modeling of ozone and PM *Atmos. Chem. Phys.* **12** 9441–58
- [18] Young P J et al 2013 Pre-industrial to end 21st century projections of tropospheric ozone from the atmospheric chemistry and climate model intercomparison project (ACCMIP) *Atmos. Chem. Phys.* **13** 2063–90
- [19] Forkel R and Knoche R 2007 Nested regional climate-chemistry simulations for central Europe C. R. *Geosci.* **339** 734–46
- [20] Hedegaard G B et al 2008 Impacts of climate change on air pollution levels in the northern hemisphere with special focus on Europe and the Arctic *Atmos. Chem. Phys.* **8** 3337–67
- [21] Lei H, Wuebbles D J and Liang X-Z 2012 Projected risk of high ozone episodes in 2050 *Atmos. Environ.* **59** 567–77
- [22] Arneth A et al 2007 CO₂ inhibition of global terrestrial isoprene emissions: potential implications for atmospheric chemistry *Geophys. Res. Lett.* **34** L18813
- [23] Young P J, Arneth A, Schurgers G, Zeng G and Pyle J A 2009 The CO₂ inhibition of terrestrial isoprene emission significantly affects future ozone projections *Atmos. Chem. Phys.* **9** 2793–803
- [24] Kunkel K E et al 2008 Sensitivity of future ozone concentrations in the northeast USA to regional climate change *Mitigation Adaptation Strateg. Glob. Change* **13** 597–606
- [25] Forkel R and Knoche R C D 2006 Regional climate change and its impact on photooxidant concentrations in southern Germany: simulations with a coupled regional climate-chemistry model *J. Geophys. Res.: Atmos.* **111** D12302
- [26] Butchart N and Scaife A A 2001 Removal of chlorofluorocarbons by increased mass exchange between the stratosphere and troposphere in a changing climate *Nature* **410** 799–802
- [27] Collins W J, Derwent R G, Garnier B, Johnson C E, Sanderson M G and Stevenson D S C 2003 Effect of stratosphere-troposphere exchange on the future tropospheric ozone trend *J. Geophys. Res.: Atmos.* **108** 8528
- [28] Lacrosonnière G et al 2014 European air quality in the 2030s and 2050s: impacts of global and regional emission trends and of climate change *Atmos. Environ.* **92** 348–58

- [29] Arblaster J M *et al* 2014 Scientific assessment of ozone depletion: global ozone research and monitoring project *Stratospheric Ozone Changes and Climate* (Geneva, Switzerland: World Meteorological Organization) ch 4
- [30] Hegglin M I and Shepherd T G 2009 Large climate-induced changes in ultraviolet index and stratosphere-to-troposphere ozone flux *Nature Geosci.* **2** 687–91
- [31] Langner J, Bergstrom R and Foltescu V 2005 Impact of climate change on surface ozone and deposition of sulphur and nitrogen in Europe *Atmos. Environ.* **39** 1129–41
- [32] Tai A P K, Mickley L J, Heald C L and Wu S 2013 Effect of CO₂ inhibition on biogenic isoprene emission: implications for air quality under 2000 to 2050 changes in climate, vegetation, and land use *Geophys. Res. Lett.* **40** 3479–83
- [33] Voulgarakis A, Yang X and Pyle J A 2009 How different would tropospheric oxidation be over an ice-free Arctic? *Geophys. Res. Lett.* **36** L23807
- [34] Horton D E, Skinner C B, Singh D and Diffenbaugh N S 2014 Occurrence and persistence of future atmospheric stagnation events *Nat. Clim. Change* **4** 698–703
- [35] Vautard R, Honoré C, Beekmann M and Rouil L 2005 Simulation of ozone during the august 2003 heat wave and emission control scenarios *Atmos. Environ.* **39** 2957–67
- [36] Bloomer B J, Stehr J W, Piety C A, Salawitch R J and Dickerson R R 2009 Observed relationships of ozone air pollution with temperature and emissions *Geophys. Res. Lett.* **36** L09803
- [37] Granier C *et al* 2011 Evolution of anthropogenic and biomass burning emissions of air pollutants at global and regional scales during the 1980–2010 period *Clim. Change* **109** 163–90
- [38] Lamarque J F *et al* 2013 The atmospheric chemistry and climate model intercomparison project (ACCMIP): overview and description of models, simulations and climate diagnostics *Geosci. Model Dev.* **6** 179–206
- [39] Simpson D *et al* 2012 The EMEP MSC-W chemical transport model—technical description *Atmos. Chem. Phys.* **12** 7825–65
- [40] Nakicenovic N *et al* 2000 *Special Report on Emissions Scenarios: A Special Report of Working Group III of the Intergovernmental Panel on Climate Change* (Cambridge: Cambridge University Press)
- [41] van Vuuren D *et al* 2011 The representative concentration pathways: an overview *Clim. Change* **109** 5–31
- [42] Knutti R, Masson D and Gettelman A 2013 Climate model genealogy: generation CMIP5 and how we got there *Geophys. Res. Lett.* **40** 1194–9
- [43] Taylor K E, Stouffer R J and Meehl G A 2012 An Overview of CMIP5 and the experiment design *Bull. Am. Meteorol. Soc.* **93** 485–98
- [44] Meehl G A *et al* 2007 THE WCRP CMIP3 multimodel dataset: a new era in climate change research *Bull. Am. Meteorol. Soc.* **88** 1383–94
- [45] Colette A *et al* 2011 Air quality trends in Europe over the past decade: a first multi-model assessment *Atmos. Chem. Phys.* **11** 11657–78
- [46] Wilson R C *et al* 2012 Have primary emission reduction measures reduced ozone across Europe? an analysis of European rural background ozone trends 1996–2005 *Atmos. Chem. Phys.* **12** 437–54
- [47] Bey I, Jacob D J, Logan J A and Yantosca R M 2001 Asian chemical outflow to the pacific in spring: origins, pathways, and budgets *J. Geophys. Res.: Atmos.* **106** 23097–113
- [48] Pope V D, Gallani M L, Rowntree P R and Stratton R A 2000 The impact of new physical parametrizations in the hadley centre climate model: HadAM3 *Clim. Dyn.* **16** 123–46
- [49] Roeckner E *et al* 2006 Sensitivity of simulated climate to horizontal and vertical resolution in the ECHAM5 atmosphere model *J. Clim.* **19** 3771–91
- [50] Collins M *et al* 2011 Climate model errors, feedbacks and forcings: a comparison of perturbed physics and multi-model ensembles *Clim. Dyn.* **36** 1737–66
- [51] Developers K-M 2004 *K-1 Coupled Model (MIROC) Description* (Tokyo, Japan: Center for Climate System Research, University of Tokyo)
- [52] Hourdin F *et al* 2012 Impact of the LMDZ atmospheric grid configuration on the climate and sensitivity of the IPSL-CM5A coupled model *Clim. Dyn.* **40** 2167–92
- [53] Rind D, Lerner J and McLinden C 2001 Changes of tracer distributions in the doubled CO₂ climate *Anglais* **106** 28061–79
- [54] Giorgi F, Bi X and Pal J S 2004 Mean, interannual variability and trends in a regional climate change experiment over Europe: I. Present-day climate (1961–1990) *Clim. Dyn.* **22** 733–56
- [55] Samuelsson P *et al* 2011 The Rossby Centre Regional Climate model RCA3: model description and performance *Tellus A* **63** 4–23
- [56] Lenderink G, Van den Hurk B, Van Meijgaard E, Van Ulden A P and Cuijpers J 2003 Simulation of present-day climate in RACMO2: first results and model developments *KNMI Report* (publicaties.minienm.nl/download-bijlage/9668/simulation-of-present-day-climate-in-racmo2.pdf)
- [57] Skamarock W C *et al* 2008 A description of the advanced research WRF version 3. NCAR Technical Note (www2.mmm.ucar.edu/wrf/users/docs/arw_v3.pdf)
- [58] Menut L *et al* 2013 CHIMERE 2013: a model for regional atmospheric composition modelling *Geosci. Model Dev.* **6** 981–1028
- [59] Robertson L, Langner J and Engardt M 1999 An eulerian limited-area atmospheric transport model *J. Appl. Meteorol.* **38** 190–210
- [60] ENVIRON 2006 *Comprehensive Air Quality Model With Extensions, Version 4.40, User's Guide* (Novato, CA: ENVIRON)
- [61] Sofiev M, Galperin M and Genikhovich E 2008 *Construction and Evaluation of Eulerian Dynamic Core for the Air Quality and Emergency Modelling System SILAM* vol XIX (Berlin: Springer)
- [62] Schaap M *et al* 2008 The LOTOS-EUROS model: description, validation and latest developments *Int. J. Environ. Pollut.* **32** 270–90