

THE EGN0G SURVEY: GAS EXCITATION IN NORMAL GALAXIES AT $z \approx 0.3$

A. BAUERMEISTER¹, L. BLITZ¹, A. BOLATTO², M. BUREAU³, P. TEUBEN², T. WONG⁴, AND M. WRIGHT¹

¹ Department of Astronomy, University of California at Berkeley, B-20 Hearst Field Annex, Berkeley, CA 94720, USA; amberb@astro.berkeley.edu

² Department of Astronomy and Laboratory for Millimeter-wave Astronomy, University of Maryland, College Park, MD 20742, USA

³ Sub-department of Astrophysics, Department of Physics, University of Oxford, Denys Wilkinson Building, Keble Road, Oxford OX1 3RH, UK

⁴ Department of Astronomy, University of Illinois, MC-221, 1002 W. Green Street, Urbana, IL 61801, USA

Received 2012 July 27; accepted 2012 November 28; published 2013 January 8

ABSTRACT

As observations of molecular gas in galaxies are pushed to lower star formation rate (SFR) galaxies at higher redshifts, it is becoming increasingly important to understand the conditions of the gas in these systems to properly infer their molecular gas content. The rotational transitions of the carbon monoxide (CO) molecule provide an excellent probe of the gas excitation conditions in these galaxies. In this paper, we present the results from the gas excitation sample of the Evolution of molecular Gas in Normal Galaxies (EGNoG) survey at the Combined Array for Research in Millimeter-wave Astronomy (CARMA). This subset of the full EGN0G sample consists of four galaxies at $z \approx 0.3$ with SFRs of $40\text{--}65 M_{\odot} \text{ yr}^{-1}$ and stellar masses of $\approx 2 \times 10^{11} M_{\odot}$. Using the 3 mm and 1 mm bands at CARMA, we observe both the CO($J = 1 \rightarrow 0$) and CO($J = 3 \rightarrow 2$) transitions in these four galaxies in order to probe the excitation of the molecular gas. We report robust detections of both lines in three galaxies (and an upper limit on the fourth), with an average line ratio, $r_{31} = L'_{\text{CO}(3-2)}/L'_{\text{CO}(1-0)}$, of 0.46 ± 0.07 (with systematic errors $\lesssim 40\%$), which implies sub-thermal excitation of the CO($J = 3 \rightarrow 2$) line. We conclude that the excitation of the gas in these massive, highly star-forming galaxies is consistent with normal star-forming galaxies such as local spirals, not starbursting systems like local ultraluminous infrared galaxies. Since the EGN0G gas excitation sample galaxies are selected from the main sequence (MS) of star-forming galaxies, we suggest that this result is applicable to studies of MS galaxies at intermediate and high redshifts, supporting the assumptions made in studies that find molecular gas fractions in star-forming galaxies at $z \sim 1\text{--}2$ to be an order of magnitude larger than what is observed locally.

Key words: galaxies: evolution – galaxies: high-redshift – galaxies: ISM

Online-only material: color figures

1. INTRODUCTION

In the past decade, molecular gas observations have begun probing the high-redshift universe in a systematic way using increasingly powerful millimeter instruments. The picture that is emerging at redshifts $1\text{--}2$ is similar in some respects to what we see in the local universe. Submillimeter galaxies (SMGs) are observed to be undergoing extreme starbursts (SBs) as a result of major interactions or mergers (e.g., Sheth et al. 2004; Tacconi et al. 2008; Engel et al. 2010), equivalent to local ultraluminous infrared galaxies (ULIRGs, e.g., Sanders et al. 1986; Solomon et al. 1997; Downes & Solomon 1998). Star-forming galaxies at high redshifts akin to local spirals are becoming accessible as well. Recent works (Tacconi et al. 2010; Daddi et al. 2010; see also work by Baker et al. 2004 on a $z = 2.7$ Lyman break galaxy) suggest that $z \sim 1\text{--}2$ star-forming galaxies (with star formation rates (SFRs) of $\approx 50\text{--}200 M_{\odot} \text{ yr}^{-1}$) are scaled-up versions of local spirals, forming stars in a steady mode (not triggered by interaction), despite hosting SFRs at the level of typical local SB systems like luminous infrared galaxies (LIRGs) and ULIRGs.

While galaxies classified as LIRGs or ULIRGs (by their infrared luminosities only) have typically been associated with starbursting and merging systems analogous to galaxies in the local universe, it is becoming clear that this connection does not hold at high redshifts. Morphological studies find that while 50% of local LIRGs show evidence for major mergers (Wang et al. 2006), that fraction appears to decrease toward high redshifts: Bell et al. (2005) find that more than half of intensely star-forming galaxies at $z \approx 0.7$ have spiral morphologies and

fewer than 30% show evidence of strong interaction. Further, the typical SFR of (normal) star-forming galaxies (like local spirals) increases toward higher redshift. Star-forming galaxies have been observed to obey a tight relation between stellar mass and SFR out to $z \sim 2.5$ (e.g., Brinchmann et al. 2004; Noeske et al. 2007; Elbaz et al. 2007; Daddi et al. 2007; Pannella et al. 2009; Elbaz et al. 2011; Karim et al. 2011). This “MS” defines what is normal for star-forming galaxies as a function of redshift, showing that typical SFRs increase with redshift. Throughout this work, we use SFG to refer to MS (normal) star-forming galaxies.

The increase in the SFR is mirrored in the molecular gas fraction of these systems. While studies of local spirals (e.g., FCRAO survey, Young et al. 1995; BIMA SONG, Regan et al. 2001; Helfer et al. 2003; HERACLES, Leroy et al. 2009; also Combes et al. 1994; Kuno et al. 2007) find average molecular gas fractions $f_{\text{mgas}} = M_{\text{mgas}}/(M_{*} + M_{\text{mgas}}) \sim 5\%$ (where M_{mgas} is the molecular gas mass (including He) and M_{*} is the stellar mass), observations of high-redshift SFGs suggest molecular gas fractions of 20%–80%, an order of magnitude higher than local spirals. It is clear that in order to understand these SFGs at $z \sim 1\text{--}2$, we must investigate the condition of the molecular gas which is forming stars at such an enhanced rate. Do these systems truly hold massive reservoirs of molecular gas or is enhanced excitation of the gas misleading the interpretation of the observations?

The rotational transitions of the carbon monoxide (CO) molecule provide a direct probe of the excitation of the molecular gas in galaxies. Local SB galaxies and ULIRGs (e.g.,

Bayet et al. 2004; Weiß et al. 2005b; Papadopoulos et al. 2007; Greve et al. 2009) and high-redshift SMGs and quasars (e.g., Weiß et al. 2005a; Riechers et al. 2006; Weiß et al. 2007; Riechers 2011; Riechers et al. 2011) show signatures of excited molecular gas: observed CO line spectral energy distributions peak at $J_{\text{upper}} > 5$ with thermalized lines up to $J_{\text{upper}} > 3$. In contrast, studies of the Milky Way (Fixsen et al. 1999) and local SFGs (e.g., Mauersberger et al. 1999; Yao et al. 2003; Mao et al. 2010) find a wide spread of excitation conditions, with an average that implies less-excited gas, where the $J_{\text{upper}} = 3$ line is already sub-thermal. This suggests that the CO($J = 3 \rightarrow 2$) line in particular is an indicator of the star formation character of a galaxy: “SB” versus “normal.”

More important still, the ratio of higher rotational lines of CO to the CO($J = 1 \rightarrow 0$) line is *necessary* to translate the observed CO line luminosity to a molecular gas mass using X_{CO} or α_{CO} , since this conversion factor is calibrated for the CO($J = 1 \rightarrow 0$) luminosity. Therefore, the measurement of $r_{J1} = L'_{\text{CO}(J-(J-1))}/L'_{\text{CO}(1-0)}$ not only informs our interpretation of the current intermediate- and high-redshift CO line studies, but is critical in the era of ALMA, which provides an order of magnitude increase in sensitivity, making the CO lines in high-redshift galaxies more accessible. The CO($J = 3 \rightarrow 2$) line in particular, observed in the 1 mm, 2 mm, and 3 mm bands, probes the molecular gas in galaxies at $z \sim 0.3$ – 3 . This redshift range is of particular interest since it includes the peak of the SFR density of the universe ($z \sim 1$ – 2) and therefore the height of galaxy building.

While several studies have measured r_{31} in the local universe (Mauersberger et al. 1999; Yao et al. 2003; Mao et al. 2010; Papadopoulos et al. 2012), the measurement of line ratios in intermediate- and high-redshift galaxies has mostly been limited to SMGs and quasars (see the review by Solomon & Vanden Bout 2005). Our knowledge of CO line ratios in SFGs at $z \sim 1$ – 2 is limited to one study at $z = 1.5$ (presented in two papers: Dannerbauer et al. 2009 and Aravena et al. 2010), which measures r_{21} in three galaxies and r_{31} in one galaxy. It is clear that more work is needed to better constrain the line ratios in intermediate- and high-redshift SFGs to interpret existing and future data and better understand the state of the molecular gas in these systems.

As part of the Evolution of molecular Gas in Normal Galaxies (EGNoG) survey, we observe both the CO($J = 1 \rightarrow 0$) and CO($J = 3 \rightarrow 2$) lines in four galaxies at $z \approx 0.3$ (the gas excitation sample), more than doubling the number of SFGs at $z > 0.1$ in which CO line ratios have been measured. In this paper, we present the r_{31} values for the EGNoG gas excitation sample and compare to previous work at low and high redshifts. We discuss the implications of this measurement for the excitation of the molecular gas in the observed galaxies as well as for high-redshift SFGs.

The paper is organized as follows. In Section 2 we give a brief description of the EGNoG survey as a whole, describe the selection of the gas excitation sample, and present the redshifts, SFRs, and stellar masses of the galaxies in this work; in Section 3 we describe the observations and data reduction; in Section 4 we present the analysis of r_{31} in these galaxies; in Section 5 we discuss the implications of this work; and we give some concluding remarks in Section 6. The data reduction and measurement of fluxes is discussed in detail in Appendix A and moment maps of the detected CO emission are presented in Appendix B. Throughout this work, we use a Λ CDM cosmology with $(h, \Omega_{\text{M}}, \Omega_{\Lambda}) = (0.7, 0.3, 0.7)$.

2. THE EGNoG SURVEY

The EGNoG survey is a key project at the Combined Array for Research in Millimeter-wave Astronomy (CARMA).⁵ By observing rotational lines of the ^{12}CO molecule, the EGNoG survey traces the molecular gas in 31 galaxies from $z = 0.05$ to 0.5, where the significant evolution from gas-rich galaxies at $z \sim 1$ – 2 (Daddi et al. 2010; Tacconi et al. 2010) to relatively gas-poor local galaxies (e.g., BIMA SONG, Helfer et al. 2003; HERACLES, Leroy et al. 2009; CARMA STING, Rahman et al. 2012) remains almost entirely unobserved. The full EGNoG sample is split into four redshift bins: bin A, 13 sources, $z = 0.05$ – 0.1 ; bin B, 10 sources, $z = 0.16$ – 0.20 ; bin C, 4 sources, $z = 0.28$ – 0.32 ; and bin D, 4 sources, $z = 0.47$ – 0.53 . The full survey is presented in the forthcoming paper by Bauermeister et al. (2012).

In this paper, we present the gas excitation sample (bin C) of the EGNoG survey, the subset of the full survey sample for which we observe both the CO($J = 1 \rightarrow 0$) and CO($J = 3 \rightarrow 2$) lines. Observations were made using the CARMA 15-element array with the 3 mm band (single-polarization) for the CO($J = 1 \rightarrow 0$) observations and the 1 mm band (dual-polarization) for the CO($J = 3 \rightarrow 2$) observations.

2.1. Sample Selection

The galaxies of EGNoG bin C are drawn from the main spectroscopic sample of the Sloan Digital Sky Survey (SDSS) Data Release 7 (York et al. 2000; Strauss et al. 2002; Abazajian et al. 2009). The galaxies were selected from the parent sample to be as representative as possible of the MS of star-forming galaxies. The MS is the tight correlation between M_* and SFR that has been observed over a large range of redshifts, e.g., $z \sim 0$ (Brinchmann et al. 2004), $z \sim 0.2$ – 1 (Noeske et al. 2007), $z \sim 1$ – 2 (Elbaz et al. 2007; Daddi et al. 2007; Pannella et al. 2009), (see also the summary of recent results in Dutton et al. 2010). Building on these observations, a few authors have attempted to describe the MS relation at $0 \leq z \lesssim 2.5$ with one equation (Bouché et al. 2010; Karim et al. 2011; Elbaz et al. 2011). In order to classify the EGNoG galaxies, we adopt a relation which roughly agrees with the relations from Bouché et al. (2010), Karim et al. (2011), and Elbaz et al. (2011) (see Bauermeister et al. 2012, for a complete description):

$$\text{sSFR}_{\text{MS}}(\text{Gyr}^{-1}) = 0.07(1+z)^{3.2} \left(\frac{M_*}{10^{11} M_{\odot}} \right)^{-0.2}, \quad (1)$$

where sSFR_{MS} is the specific star formation rate ($\text{sSFR} = \text{SFR}/M_*$) of the MS of star-forming galaxies. We differentiate “SB” from “normal” galaxies according to the criteria of Rodighiero et al. (2011): $\text{sSFR}_{\text{SB}} > 4 \times \text{sSFR}_{\text{MS}}$. Therefore, SFGs (normal star-forming galaxies) lie roughly within a factor of four of the MS sSFR (which is a function of M_* and z) and SBs lie at sSFR values larger than four times the MS sSFR .

In the selection of the EGNoG sample, we apply the following criteria in each redshift bin in order to identify non-interacting, star-forming galaxies lying as close to the MS as possible. Star-forming galaxies are selected using the BPT diagram (Baldwin et al. 1981) criteria from Kauffmann et al. (2003)

⁵ CARMA is a 3 band, 23 element millimeter interferometer jointly operated by the California Institute of Technology, University of California Berkeley, University of Chicago, University of Illinois at Urbana-Champaign, and University of Maryland.

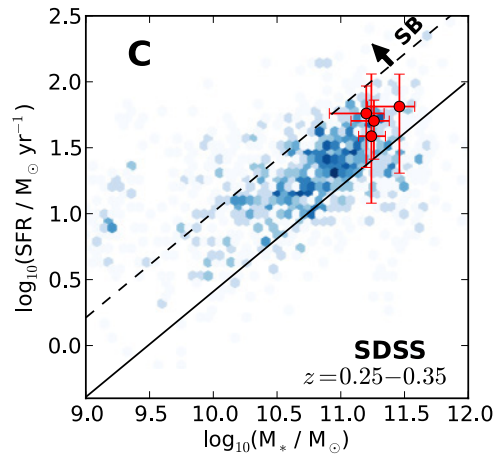


Figure 1. Stellar mass vs. SFR in EGNog bin C. Red points and error bars show EGNog galaxies and blue shading shows the logarithm of the density (in the M_* -SFR plane) of star-forming galaxies from the parent data set at $z = 0.25-0.35$ (slightly larger than the EGNog redshift range so that more points may be included to better capture the behavior of the main sequence). The solid black line indicates the main sequence (Equation (1)) at the average redshift of the bin. The starburst (SB) criterion is indicated by the dashed black line.

(A color version of this figure is available in the online journal.)

(rejecting sources with active galactic nuclei). Obviously interacting galaxies were excluded via visual inspection of the SDSS optical images. However, some interacting galaxies may be in the sample due to the difficulty of identification at the modest resolution of the SDSS images. Practical considerations imposed the following further constraints. We required a spectroscopic redshift so that the error in the redshift is small enough to ensure that CO emission would be captured within the observed bandwidth. We excluded galaxies with SFRs below a minimum value estimated from the instrument sensitivity.

The result of the sample selection is illustrated in Figure 1, which shows stellar mass versus SFR of the EGNog bin C galaxies (red points). The blue shading indicates the (logarithm of the) density of points in the M_* -SFR plane for all star-forming galaxies (spectroscopic targets only; ≈ 1300 galaxies) at $z = 0.25-0.35$. We plot galaxies in a slightly larger redshift range than the bin C specification in order to better capture the behavior of the MS. The MS of star-forming galaxies at $z = 0.3$ is indicated by the solid black line, with the SB cutoff indicated by the dashed black line. In this plot, the low-mass, low-SFR end of the MS is sparsely sampled due to the limited number of spectroscopically targeted, low-SFR, star-forming galaxies in the SDSS at $z \approx 0.3$. While the EGNog bin C galaxies are high- M_* , high-SFR galaxies, they lie within the expected scatter of the MS (as defined in Equation (1)), and are not classified as SB galaxies according to the prescription from Rodighiero et al. (2011) (presented above).

2.2. Redshifts, Stellar Masses, and Star Formation Rates

Spectroscopic redshifts are from David Schlegel’s *spZbest* files produced by the Princeton-1D code, *specBS*.⁶ The stellar masses and SFRs of galaxies in the SDSS DR7 are provided by the Max-Planck-Institute for Astrophysics–John Hopkins University (MPA–JHU) group (<http://www.mpa-garching.mpg.de/SDSS>). Stellar masses are derived by fitting SDSS *ugriz* photometry to a grid of models spanning a wide range of star formation histories. This method is found to compare quite well

⁶ See <http://spectro.princeton.edu/> for more information.

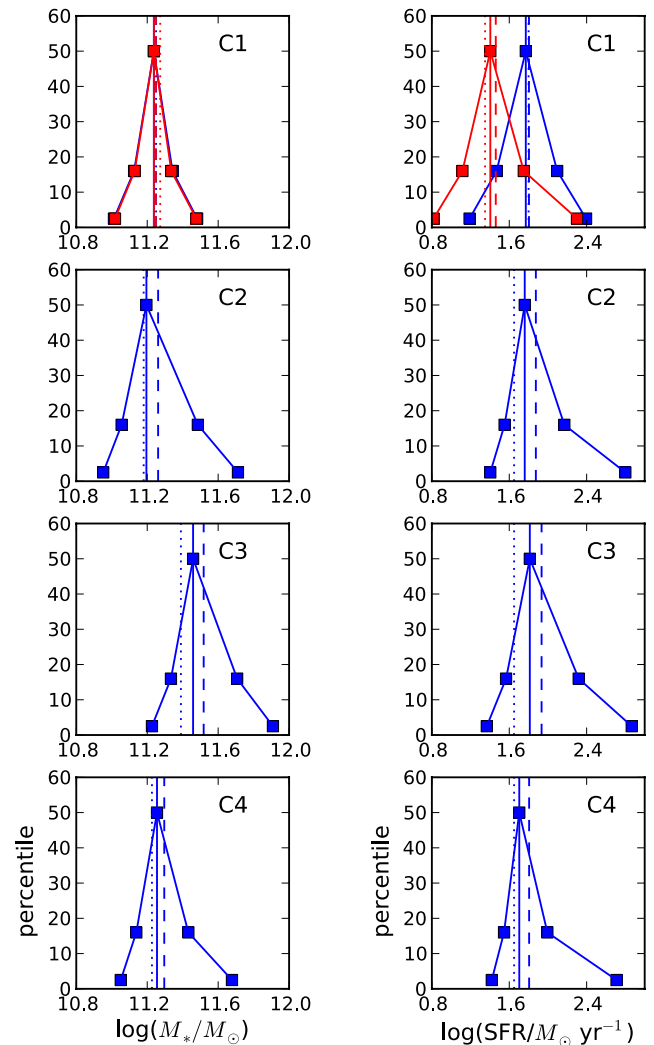


Figure 2. Probability distribution functions for the stellar masses (left panel) and star formation rates (right panel) from the MPA–JHU group for bin C sources. Data points give the 2.5, 16, 50, 84, and 97.5 percentiles of the distributions. The median, mean, and mode are indicated by the vertical solid, dashed, and dotted lines, respectively. In cases where a duplicate exists (source C1), the duplicate values are plotted in red.

(A color version of this figure is available in the online journal.)

with the Kauffmann et al. (2003) methodology using spectral features (more detail on this comparison is found on the Web site above). SFRs are derived by fitting the fluxes of no less than five emission lines using the method described in Brinchmann et al. (2004). Both stellar masses and SFRs are derived using a Bayesian analysis, producing probability distributions of each quantity for each galaxy. These distributions for the four bin C galaxies are shown in Figure 2. We take the median of the distribution, with errors indicated by the 16th and 84th percentile points. In the case where a duplicate SDSS source exists (as a result of SDSS automated source-finding), we take the average of the two median values and use the lowest(highest) 16th(84th) percentile value to indicate the negative(positive) error. The redshifts, stellar masses, and SFRs (with errors) are given in Table 1.

3. CARMA OBSERVATIONS

The four bin C galaxies were observed in two rotational transitions of the CO molecule: $\text{CO}(J = 1 \rightarrow 0)$ $\nu_{\text{rest}} =$

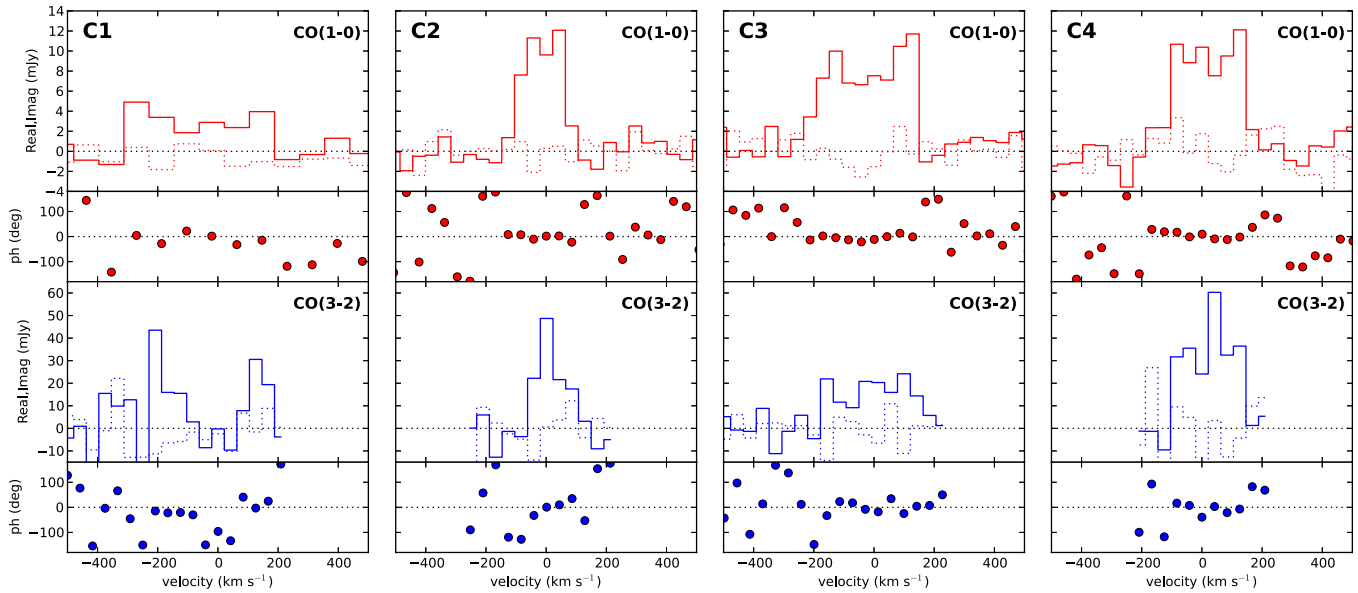


Figure 3. Vector-averaged *Real* (solid) and *Imaginary* (dotted) amplitudes (*Real*, *Imag* in mJy beam⁻¹) and phase (*ph*, degrees) of the calibrated *uv* data vs. velocity (km s⁻¹) for the CO(*J* = 1 → 0) (red, top panel) and CO(*J* = 3 → 2) (blue, bottom panel) transitions in each of the four sources (indicated in upper left corner). With the higher resolution of the CO(*J* = 3 → 2) data, we observe the peak of the CO(*J* = 3 → 2) emission to be offset (<1''5 ~ 6 kpc) from the centers of galaxies C1 and C2. In these cases, we calculate the *uv* spectra at the peak of the CO(*J* = 3 → 2) emission. For the CO(*J* = 1 → 0) line of galaxy C1, we average 2 channels together in order to increase the signal-to-noise ratio. Large *Real* amplitudes (the *Imaginary* part shows the noise) coincident with phases of ≈0 over multiple velocity channels indicate a detection.

(A color version of this figure is available in the online journal.)

Table 1
Basic Information

EGNoG Name	SDSS identification	R.A.	Decl.	<i>z</i>	log (<i>M</i> _* / <i>M</i> _⊙)	SFR (<i>M</i> _⊙ yr ⁻¹)
C1 ^a	SDSS J092831.94+252313.9	09:28:31.941	+25:23:13.925	0.283020 ± 0.000022	11.24 ^{+0.10} _{-0.11}	38.7 ^{+85.9} _{-25.6}
C2	SDSS J090636.69+162807.1	09:06:36.694	+16:28:07.136	0.300622 ± 0.000010	11.20 ^{+0.29} _{-0.14}	57.5 ^{+90.1} _{-21.9}
C3	SDSS J132047.13+160643.7	13:20:47.139	+16:06:43.720	0.312361 ± 0.000014	11.46 ^{+0.25} _{-0.12}	64.9 ^{+142.9} _{-28.0}
C4	SDSS J133849.18+403331.7	13:38:49.189	+40:33:31.748	0.285380 ± 0.000015	11.26 ^{+0.18} _{-0.12}	50.5 ^{+48.1} _{-15.4}

Notes. Derived quantities (*z*, *M*_{*}, SFR) are from the MPA-JHU group (see the text).

^a Indicates duplicate source in SDSS: the average value is reported for *z*, *M*_{*}, and SFR.

115.3 GHz, $\nu_{\text{obs}} \sim 88$ GHz and CO(*J* = 3 → 2) $\nu_{\text{rest}} = 345.9$ GHz, $\nu_{\text{obs}} \sim 266$ GHz. At each frequency, each galaxy was observed over several different days. Each data set includes observations of a nearby quasar for phase calibration (taken every 15–20 minutes), a bright quasar for passband calibration, and either Mars or MWC349 for flux calibration (in most cases).

The reduction of all observations for this survey was carried out within the EGN⁷ data reduction infrastructure (based on the MIS pipeline; Pound & Teuben 2012) using the Multichannel Image Reconstruction, Image Analysis and Display (MIRIAD; Sault et al. 2011) package for radio interferometer data reduction. Our data analysis also used the miriad-python software package (Williams et al. 2012). The data were flagged, passband-calibrated, and phase calibrated in the standard way. Final images were created using `invert` with `options=mosaic` in order to properly handle and correct for the three different primary beam patterns. All observations are single pointing. We describe the CO(*J* = 1 → 0) and CO(*J* = 3 → 2) observations individually below. A full description of the data reduction and flux measurement is given in Appendix A.

3.1. CO(*J* = 1 → 0)

The CO(*J* = 1 → 0) transition for the galaxies presented here lies in the 3 mm band of CARMA (single-polarization, linearly polarized feeds). The wide bandwidth of the CARMA correlator allowed us to observe both the ¹²CO(*J* = 1 → 0) and the ¹³CO(*J* = 1 → 0) lines simultaneously. The ¹²CO (¹³CO) line was observed with five (three) overlapping 500 MHz bands, covering ≈7000 (5000) km s⁻¹ total, at 42 km s⁻¹ resolution, with 3-bit sampling. These observations were carried out from 2011 August to November in CARMA's D configuration, with 11–150 m baselines yielding a typical synthesized beam of 4''.8 × 3''.9 at 88 GHz. Each galaxy was observed for 20–30 hr (time on-source) in moderate to good weather conditions for 3 mm observation, yielding final images with rms noise of ≈1.2 mJy beam⁻¹ in a 42 km s⁻¹ channel. The flux scale in each data set is set by the flux of the phase calibrator, which is determined from the flux calibrator. For these data, we use phase calibrators 0854+201 (4 Jy, 9% linearly polarized), 1357+193 (0.8 Jy), and 1310+323 (1.7 Jy).

All four galaxies were clearly detected in the CO(*J* = 1 → 0) line, as shown in Figure 3. The top panels show the vector-averaged *Real* and *Imaginary* amplitudes and phase of the

⁷ <http://carma.astro.umd.edu/wiki/index.php/EGN>

Table 2
Properties of the CO Emission (Described in Section 3.3)

Name	Transition	S_{CO} (Jy km s ⁻¹)	L'_{CO} (10 ⁹ K km s ⁻¹ pc ²)	v_{center} (km s ⁻¹)	ΔV (km s ⁻¹)	Non-matched r_{31} ^a
C1	CO($J = 1 \rightarrow 0$)	2.05 ± 0.34	8.25 ± 2.83	-84.9 ± 18.1	542.2 ± 41.7	0.49 ^b ± 0.26
	CO($J = 3 \rightarrow 2$)	9.02 ^b ± 2.65	4.03 ^b ± 1.69	-49.9 ± 7.3	542.3 ± 23.4	
C2	CO($J = 1 \rightarrow 0$)	2.35 ± 0.10	10.70 ± 3.24	-6.7 ± 1.2	253.7 ± 42.3	0.40 ± 0.18
	CO($J = 3 \rightarrow 2$)	8.39 ± 1.12	4.25 ± 1.40	19.5 ± 8.2	169.2 ± 42.3	
C3	CO($J = 1 \rightarrow 0$)	4.39 ± 0.09	21.70 ± 6.53	-24.7 ± 5.7	384.0 ± 42.3	0.34 ± 0.15
	CO($J = 3 \rightarrow 2$)	13.46 ± 1.56	7.39 ± 2.38	-14.0 ± 7.8	426.7 ± 42.7	
C4	CO($J = 1 \rightarrow 0$)	3.01 ± 0.11	12.30 ± 3.72	17.3 ± 13.0	292.5 ± 41.8	0.44 ± 0.19
	CO($J = 3 \rightarrow 2$)	11.88 ± 1.22	5.41 ± 1.72	33.5 ± 5.0	250.7 ± 41.8	

Notes. For each galaxy, the CO line flux (S_{CO}), luminosity (L'_{CO} , see Equation (2)), central velocity (v_{center}), and full velocity width (ΔV) are given for the CO($J = 1 \rightarrow 0$) and CO($J = 3 \rightarrow 2$) lines. The ratio of the line luminosities (r_{31}) for each galaxy is given in the last column.

^a r_{31} reported here is calculated from the total line luminosities (see Section 4.1). We perform a more careful calculation, matching the 1 and 3 mm data, in Section 4.3.

^b CO($J = 3 \rightarrow 2$) values for source C1 are upper limits.

calibrated uv data versus velocity for the CO($J = 1 \rightarrow 0$) line. For a compact source at the center of the field of view, the *Real* part shows the signal without a noise bias, and the *Imaginary* part shows the noise. In all four cases, we see coherent emission (larger *Real amplitudes* coincident with noise-like *Imaginary* amplitudes and phases of ≈ 0) over multiple velocity channels, indicative of a detection. We report no detection of the ¹³CO($J = 1 \rightarrow 0$) line, which is expected to be weaker than the ¹²CO($J = 1 \rightarrow 0$) line by a factor of 7–17 (Rickard & Blitz 1985).

3.2. CO($J = 3 \rightarrow 2$)

The CO($J = 3 \rightarrow 2$) transition at the redshift of the galaxies discussed here lies in the CARMA 1 mm band (dual-polarization, circularly polarized feeds). We again observed both the ¹²CO($J = 3 \rightarrow 2$) and the ¹³CO($J = 3 \rightarrow 2$) lines simultaneously. The ¹²CO (¹³CO) line was observed with three (one) overlapping 500 MHz bands, covering ≈ 1500 (550) km s⁻¹ total, at 14 km s⁻¹ resolution, with three-bit sampling. These observations were carried out in CARMA’s E and D configuration during 2011 August and 2012 April, respectively. Source C4 was observed entirely in E configuration, while the other three sources were observed mostly in D configuration. The E configuration has 8–66 m baselines yielding a typical synthesized beam of $3''.2 \times 2''.5$ at 266 GHz. The D configuration has 11–150 m baselines yielding a typical synthesized beam of $1''.7 \times 1''.5$ at 266 GHz. Each galaxy was observed for 2–6.5 hr (time on-source) in good weather conditions for 1 mm observation, yielding final images with rms noise of 5–10 mJy beam⁻¹ in a 42 km s⁻¹ channel. For these data, we use phase calibrators 0854+201 (2 Jy in 2011 August, 4 Jy in 2012 April), 1224+213 (0.6 Jy), and 1310+323 (0.6 Jy).

Sources C2, C3, and C4 were detected at the $\approx 5\sigma$ level in the CO($J = 3 \rightarrow 2$) line. However, C1, with its wide velocity profile (observed in the CO($J = 1 \rightarrow 0$) line), was only marginally detected and we give only an upper limit on the CO($J = 3 \rightarrow 2$) flux. The vector-averaged *Real* and *Imaginary* amplitudes and phase of the calibrated uv data versus velocity for the CO($J = 3 \rightarrow 2$) line are shown in the bottom panels of Figure 3. The peak of the CO($J = 3 \rightarrow 2$) emission in galaxies C1 and C2 is offset from the nominal center of each galaxy, so the uv spectra are calculated at this slightly offset ($< 1''.5 \sim 6$ kpc) position. We report no detection in the ¹³CO($J = 3 \rightarrow 2$) line for any galaxy.

3.2.1. Source C1 Upper Limit

Due to the wide-integrated velocity profile of source C1, the CO($J = 3 \rightarrow 2$) line was only marginally detected. The channel maps did not show evidence of a source upon visual inspection, but an integrated spectrum made of a circular region $4''.5$ in radius at the center of the image suggests a 3σ detection. The line flux and other quantities are calculated from this spectrum, over the velocities of the CO($J = 1 \rightarrow 0$) line for this galaxy. These values should be taken as an upper limit on the true flux. The error in the flux measurement (S_{CO} , Jy km s⁻¹) is calculated from the pixel noise, σ_p (Jy beam⁻¹): $\sigma_{S_{\text{CO}}} = \sigma_p \delta V \sqrt{N_p/N_{\text{eq}}}$ where δV is the channel width (km s⁻¹), N_p is the number of pixels summed, and N_{eq} is the number of pixels equivalent to the beam.

3.3. Derived Properties of the CO Emission

Table 2 presents the quantities we derive from the CO emission images. The CO line luminosity is calculated from the line flux (S_{CO} in Jy km s⁻¹, calculated as described in Section A.2) following:

$$L'_{\text{CO}} = 3.25 \times 10^7 S_{\text{CO}} v_{\text{obs}}^{-2} r_{\text{com}}^2 (1+z)^{-1} \quad (2)$$

(see the review by Solomon & Vanden Bout 2005), where v_{obs} is in GHz and r_{com} is the comoving distance in Mpc. The units of L'_{CO} are K km s⁻¹ pc². We report the measurement error for S_{CO} . The error reported for L'_{CO} includes both the measurement error of S_{CO} and a 30% systematic error, added in quadrature (see Section A.2 for more details).

The center velocity, v_{center} , is the flux-weighted average velocity of the galaxy-integrated spectrum ($v = 0$ at the redshift in Table 1). The error reported is the standard deviation of the v_{center} values found with the three flux measurement methods and different channel averaging described in Section A.2. The reported velocity width (ΔV) is the full width of the emission, where “source” velocity channels are selected by eye. We give the velocity width of a single channel as the error. The line ratio r_{31} is given by

$$r_{31} = L'_{\text{CO}(3-2)} / L'_{\text{CO}(1-0)} \quad (3)$$

and the error is calculated by propagating the errors of the individual line luminosities.

Moment maps (discussed in Section 4.2 and displayed in Appendix B) are created from the 2σ clip smooth mask (see

Section A.2). Moment 0 (total intensity) maps are a simple sum of the masked images in the “source” velocity channels. Moment 1 (intensity-weighted mean velocity) maps are produced by summing the masked image multiplied by the velocity in each channel then normalizing by the moment 0 value.

4. ANALYSIS

We first present our total r_{31} measurements (using the total flux observed in each line) in Section 4.1. All four observed galaxies are discussed. However, the total r_{31} values use line luminosities calculated completely independently of one another, making no attempt at matching the spectral or spatial resolution. In Section 4.2, we carefully match the CO($J = 1 \rightarrow 0$) and CO($J = 3 \rightarrow 2$) data to each other as well as possible, in both spectral and spatial resolution. In Section 4.3 we recalculate r_{31} using both the natural and adjusted spatial resolution, with matched spectral resolution in both cases. In Section 4.4, we investigate the radial dependence of r_{31} by fitting two-dimensional Gaussians to the total intensity maps in order to derive peak intensities, which are independent of spatial resolution. The analysis in Sections 4.2–4.4 is performed only for the three galaxies that are detected significantly in both lines (C1 is excluded due to marginal detection of the CO($J = 3 \rightarrow 2$) line).

4.1. Total r_{31}

As a first step, we calculate r_{31} in the simplest way possible, taking the ratio of the total line luminosities. Of the four galaxies observed, we detect three in both lines, yielding r_{31} values (see Table 2) of 0.34–0.44 with an average value of 0.39. For source C1 we derive an upper limit on r_{31} of 0.49, which is consistent with the other values.

These r_{31} values carry the caveat that they are determined from line luminosities that are calculated independently of one another. The “source” velocity channels for each line are selected by eye for the most convincing detection. Further, the CO($J = 1 \rightarrow 0$) and CO($J = 3 \rightarrow 2$) lines are observed at different frequencies in the same configuration (except source C4). This yields different sampling of the uv -plane, which means that the two maps are sensitive to slightly different spatial scales. We recalculate r_{31} more carefully for C2, C3, and C4 in the following sections.

4.2. Matching the 1 and 3 mm Data

In this section, we attempt to standardize the flux calculated for each line as much as possible by matching both spatial and spectral resolution. First, we use the same spectral resolution in both the CO($J = 1 \rightarrow 0$) and CO($J = 3 \rightarrow 2$) data, selecting the starting channel so that the image velocity channels line up exactly.

Next, to investigate the effect of the different uv sampling of the two lines, we recreate the images using only data at uv -distances present in both the 1 and 3 mm data (matched uv data): 8–44 k λ , which corresponds to spatial scales of $\approx 2''.5$ – $13''$. Further, we force all the images to have a standard pixel size ($0''.99$ for all except the CO($J = 3 \rightarrow 2$) line for C2 and C3 using all uv data, for which we use $0''.33$ pixels since these images have higher resolution). Figures 8–10 in Appendix B show images and spectra calculated within the standard source regions (discussed in Section A.2) using all uv data (top panel) and using matched uv data (bottom panel).

This uv -distance restriction makes the beam sizes more similar, but not necessarily the same due to different sampling

Table 3
Comparison of uv Data Selections

Name, Trans.	All uv Data		Matched uv Data		Flux % Diff.
	S_{CO}	Beam	S_{CO}	Beam	
C2 1–0	2.30	$4''.90 \times 4''.08$	2.15	$4''.54 \times 3''.75$	–6.5%
3–2	7.06	$1''.70 \times 1''.56$	7.00	$3''.20 \times 2''.84$	–0.8%
C3 1–0	4.29	$4''.97 \times 4''.06$	3.71	$4''.62 \times 3''.77$	–13.5%
3–2	13.75	$1''.71 \times 1''.46$	11.61	$3''.12 \times 3''.02$	–15.6%
C4 1–0	2.95	$4''.99 \times 4''.02$	2.76	$4''.62 \times 3''.83$	–6.4%
3–2	12.79	$3''.33 \times 2''.41$	12.01	$3''.55 \times 3''.08$	–6.1%

Notes. Measured CO line fluxes (S_{CO} in Jy km s $^{-1}$) and beam sizes for images made using all uv data and matched uv data. The fluxes reported here are calculated using the 2σ smooth masking technique discussed in Section A.2. The percent difference in the measured flux is defined as $100(S_{\text{CO,match}} - S_{\text{CO,all}})/S_{\text{CO,all}}$.

within the allowed uv -distance range. Table 3 compares the measured fluxes and beam sizes using all uv data and matched uv data. The change in the measured flux is $\lesssim 6\%$ for sources C2 and C4, which is less than the expected measurement error in the total flux. However, the change in flux is more significant for source C3 in both lines. For the CO($J = 1 \rightarrow 0$) line, the matched uv coverage excludes the short uv spacings, which are sensitive to large-scale structure. Therefore, the presence of extended emission in source C3 would explain the decrease in flux in the matched uv data. This is supported by the radial profile of the CO($J = 1 \rightarrow 0$) cumulative flux in Figure 6 in Appendix A, which shows the matched uv data agreeing with the all uv data at small radii and diverging at larger radii. The CO($J = 3 \rightarrow 2$) line, on the other hand, loses long uv spacings (sensitive to small-scale structure) in the matched uv data. However, the uv -distance restriction excludes a sizable fraction of the uv data, which decreases the signal to noise in the image so that less flux is recovered using the masking technique. A comparison of the unmasked CO($J = 3 \rightarrow 2$) line fluxes in the all uv and matched uv data sets for source C3 shows a drop of only 7.2%, which is within the expected measurement error.

In the rest of our analysis, we consider the emission measured in both cases of uv coverage.

4.3. Integrated r_{31} Velocity Profiles

We now make a more careful measurement of r_{31} , with the CO($J = 1 \rightarrow 0$) and CO($J = 3 \rightarrow 2$) flux measurements as well matched to one another as possible. For each uv data selection (all uv , matched uv), we calculate r_{31} in each channel where flux is measured in both lines.

Figure 4 shows the integrated L'_{CO} and r_{31} velocity profiles for each of the three significantly detected galaxies. L'_{CO} as a function of velocity is plotted in the top panels for each transition (CO($J = 1 \rightarrow 0$) in red, CO($J = 3 \rightarrow 2$) in blue), for all uv data (solid lines) and matched uv data (dashed lines). Source velocity channels for each line (chosen by eye) are indicated by shading in the corresponding color. The bottom panels show the r_{31} profiles for all uv data (solid black line, with the average value indicated by the horizontal black dotted line) and the matched uv data (dashed magenta line, with average value shown by the horizontal magenta dash-dotted line). For galaxy C2, we have excluded the velocity channels at ± 86 km s $^{-1}$ from this analysis. At -86 km s $^{-1}$, we do not detect the CO($J = 3 \rightarrow 2$) line despite a 3σ detection in the

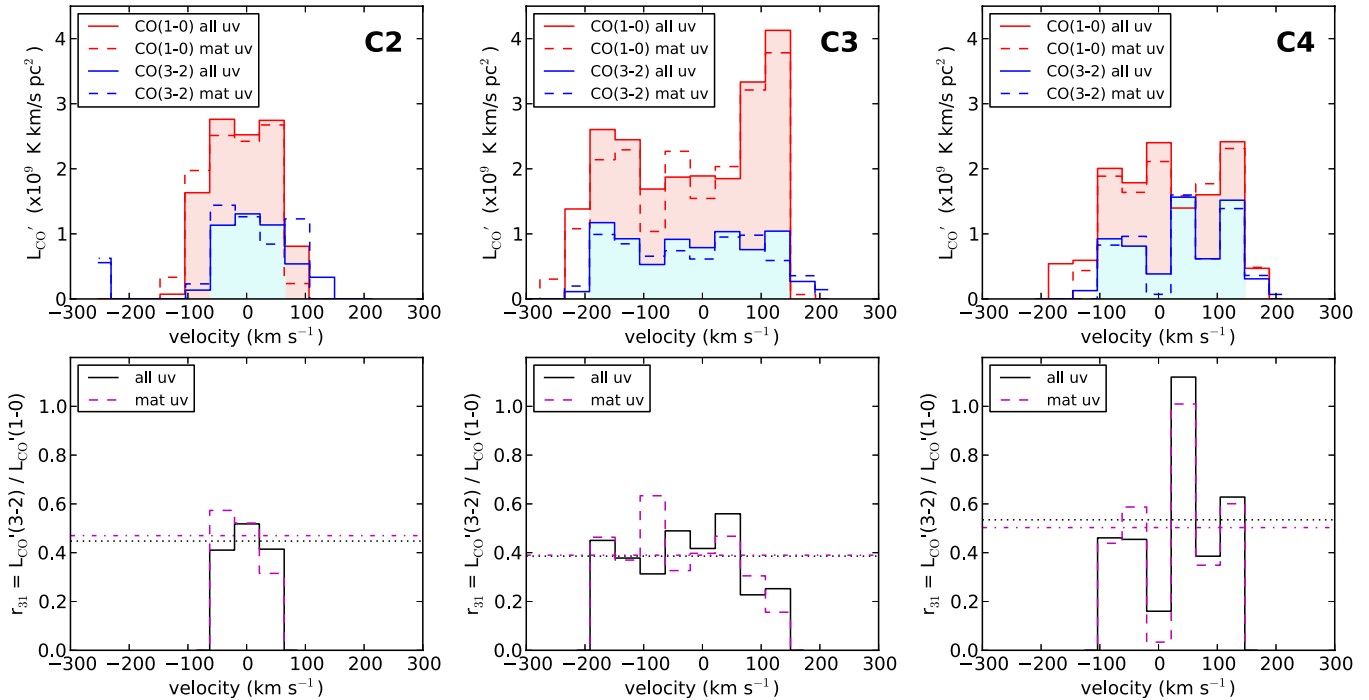


Figure 4. L'_{CO} and r_{31} profiles for the three detected sources. The top panels show the L'_{CO} profiles for the CO($J = 1 \rightarrow 0$) (red) and CO($J = 3 \rightarrow 2$) (blue) transitions using all uv data (all uv , solid lines) and matched uv data (mat uv , dashed lines). The shading under each profile indicates which velocity channels are considered part of the source emission for each transition. The r_{31} profile is plotted in the bottom panel for both uv selections (all uv in solid black, matched uv in dashed magenta). The average r_{31} value for each profile is plotted as a horizontal black dotted (all uv data) or magenta dash-dotted (matched uv data) line.

(A color version of this figure is available in the online journal.)

CO($J = 1 \rightarrow 0$) line. At $+86 \text{ km s}^{-1}$, the CO($J = 3 \rightarrow 2$) image suggests a weak (2σ) detection at the center, but the measured flux is dominated by a 3σ noise spike close to this emission. Therefore, we use only the central three velocity channels in the CO($J = 3 \rightarrow 2$) transition.

In galaxies C2 and C3, the r_{31} profiles appear well behaved, remaining roughly constant in all velocity channels. On the other hand, galaxy C4 shows significant deviations from a flat profile, with a very low r_{31} at $\approx 0 \text{ km s}^{-1}$ and a very high value at $\approx 40 \text{ km s}^{-1}$. Due to the modest signal to noise ratio at which the CO($J = 3 \rightarrow 2$) line is detected in each channel, we cannot draw any definitive conclusions, but note that if the enhanced r_{31} is real, it may indicate a region of enhanced gas excitation (at a velocity close to 0, it is likely to be physically near the center of the galaxy), such as a starbursting clump, in which a higher r_{31} would be expected.

For each galaxy, Table 4 gives the number of velocity channels in which r_{31} is calculated, the mean and standard deviation (σ) of r_{31} for each uv data selection and the average r_{31} value for the two uv data selections (galaxy mean), with the expected measurement error (meas. error). We expect a 20% measurement error in the flux of each line, in each channel (Section A.2), which gives a 30% error in r_{31} in each channel, and a $30\%(N_{\text{ch}})^{-1/2}$ error in the average r_{31} . This value is reported in the last column of Table 4 for each galaxy. The bottom rows give the mean and standard deviation of the average r_{31} values for the three sample galaxies. In this paper, the standard deviation given is the square root of the unbiased sample variance.

The average values for each uv selection are consistent with each other within each galaxy and roughly consistent across the three galaxies. While the uv selection appears to have a small effect on the average r_{31} value, it is not in a systematic direction. The standard deviation of r_{31} we observe in galaxies C2 and C3

Table 4
Summary of EGN0G Galaxy r_{31} Values

Name	N_{ch}	All uv		Matched uv		Galaxy	Meas.
		Mean	σ	Mean	σ	Mean	Error
C2	3	0.45	0.06	0.47	0.14	0.46	0.08
C3	8	0.39	0.12	0.39	0.14	0.39	0.04
C4	6	0.54	0.32	0.50	0.32	0.52	0.06
Sample Mean						0.46	
Sample σ						0.07	

Notes. For each source, we give the number of velocity channels in which r_{31} is calculated (N_{ch}), the mean and standard deviation (σ) of r_{31} using all uv data and the matched uv data, and the average r_{31} value for each galaxy, with the expected measurement error. In the bottom rows, we give the mean and standard deviation of r_{31} in this sample of three galaxies. The expected measurement error for the average r_{31} in each galaxy is the expected measurement error in each channel (30%) divided by $\sqrt{N_{\text{ch}}}$.

is consistent with the expected 30% measurement errors in each channel. The standard deviation for galaxy C4 is roughly twice the expected 30% error due to the two outlier channels discussed above. Overall, in the three EGN0G galaxies discussed here, we find a mean r_{31} of 0.46 with a standard deviation of 0.07. Since we estimate each line flux has systematic errors of up to $\approx 30\%$ (see Section A.2), the systematic errors in the ratio r_{31} will be $\lesssim 40\%$.

4.4. Radial Dependence of r_{31}

Since r_{31} traces the local excitation conditions of the molecular gas of a galaxy, it is expected to vary within the disk of the galaxy. In fact, Dumke et al. (2001) found CO($J = 3 \rightarrow 2$) emission to be more centrally concentrated than CO($J = 1 \rightarrow 0$) emission in nearby galaxies, so that r_{31} decreased with radius.

To look for radial variation in r_{31} in the EGNog data, we cannot compare the emission maps directly due to the marginal resolution of the galaxies and the different uv coverage of the two transitions. In order to disentangle the true emission distribution from the uv sampling, we fit a two-dimensional Gaussian to the total intensity (moment 0) map of each CO transition using the MIRIAD program `imfit`. This analysis is presented in detail in Appendix C.

While the error bars are large, we do find the ratio of the deconvolved peak intensities (representative of the conditions in the central region of the galaxy) to be systematically higher than the ratio of the total fluxes. In our sample, we find $r_{31}(\text{peak}) = 0.73 \pm 0.31$, with a standard deviation across the three galaxies of 0.04. We compare this to the ratio calculated from the fit total fluxes: 0.42 ± 0.11 , with a standard deviation of 0.04. While the small standard deviations in our r_{31} values show consistency between the three galaxies, these results are plagued by sizable uncertainties as a result of fitting data with only modest signal to noise (note that our error estimates are conservative and may in fact be overestimating the true error). Therefore, we conclude (but not robustly) that r_{31} is higher in the center of the EGNog galaxies than in the molecular disk as a whole (consistent with Dumke et al. 2001).

5. DISCUSSION

The observed r_{31} is a function of many parameters, including the excitation temperature (T_{ex}), optical depth (τ_v), and filling factor of each line (e.g., Hurt et al. 1993). For each line, the rest-frame intensity is

$$I_v = \eta_f(1 - \exp^{-\tau_v})[B_v(T_{\text{ex}}) - B_v(T_{\text{CMB}})], \quad (4)$$

$$\equiv B_v(T_b) \equiv \frac{2k\nu^2 T_{b,\text{RJ}}}{c^2}$$

where $B_v(T)$ is the specific intensity of a blackbody at temperature T , T_b is the brightness temperature of the line, $T_{b,\text{RJ}}$ is the Rayleigh–Jeans definition brightness temperature of the line, and η_f is the efficiency of the coupling between the beam and source emission, which is determined by the beam size, the molecular gas disk size, and the fraction of the disk that is emitting in the line (the filling factor). Note that Equation (4) is in the rest frame. The observed line intensity would be redshifted so that the corresponding observed brightness temperature (for both definitions) is reduced by a factor of $(1+z)$.

For equal velocity widths in both lines (as we have enforced in Sections 4.3 and 4.4), r_{31} , as defined in Equations (2) and (3), reduces to the ratio of the Rayleigh–Jeans brightness temperatures. Following Equation (4), we can write r_{31} as

$$r_{31} = \frac{T_{b,\text{RJ}}(3-2)}{T_{b,\text{RJ}}(1-0)} = \frac{[\eta_{\text{RJ}}\eta_f\eta_\tau\eta_{\text{CMB}}T_{\text{ex}}]_{(3-2)}}{[\eta_{\text{RJ}}\eta_f\eta_\tau\eta_{\text{CMB}}T_{\text{ex}}]_{(1-0)}}, \quad (5)$$

where each term in Equation (4) is represented as a correction factor η so that we can express r_{31} more directly in terms of the line excitation temperatures. Specifically, η_{CMB} gives the correction from T_{ex} to the effective excitation temperature ($T_{\text{ex,eff}}$, where $B_v(T_{\text{ex,eff}}) = B_v(T_{\text{ex}}) - B_v(T_{\text{CMB}})$) due to the cosmic microwave background (CMB) term. At $z = 0.3$, the temperature of the CMB (T_{CMB}) is ≈ 3.5 K, so that for $T_{\text{ex}} = 10\text{--}30$ K, $\eta_{\text{CMB}} \approx 0.85\text{--}0.95$ for the CO($J = 1 \rightarrow 0$) line and $0.98\text{--}1.00$ for the CO($J = 3 \rightarrow 2$) line. The term accounting for the optical depth of each line is $\eta_\tau = (1 - e^{-\tau_v})$. The filling factor term, η_f (defined above) is expected to be < 1 and may be

different for the two lines. Finally, we represent the difference between T_b and $T_{b,\text{RJ}}$ by η_{RJ} , which, for $T_b = 10\text{--}30$ K, is $0.75\text{--}0.91$ for the CO($J = 1 \rightarrow 0$) line and $0.39\text{--}0.75$ for the CO($J = 3 \rightarrow 2$) line. Therefore, for $T_{\text{ex}} = 10\text{--}30$ K for each line, we expect

$$r_{31} = (0.4 - 1.2) \frac{[\eta_f\eta_\tau T_{\text{ex}}]_{3-2}}{[\eta_f\eta_\tau T_{\text{ex}}]_{1-0}}. \quad (6)$$

The excitation temperature of a given emission line will fall between the radiation temperature (T_{CMB}) and the kinetic temperature, depending on the density of the gas. Where the molecular gas density is larger than the critical density (for 20 K gas, $n_{\text{crit}} \approx 10^3 \text{ cm}^{-3}$ for CO($J = 1 \rightarrow 0$) and $\approx 10^5 \text{ cm}^{-3}$ for CO($J = 3 \rightarrow 2$)), the excitation temperature is equal to the kinetic temperature of the gas. Thus, we see that optically thick gas with equal excitation temperature in both lines will have $r_{31} \approx 1.0 \pm 0.5$ for $T_{\text{ex}} \approx 10\text{--}30$ K (depending on the relative filling factors and optical depths of the two lines). This is consistent with the general criterion that gas with $r_{31} < 1$ is sub-thermal and $r_{31} > 1$ is thermalized. Note that deviation from $r_{31} = 1$ in thermalized gas is a strong function of excitation temperature (due to η_{CMB} and η_{RJ}): higher-excitation temperature gas will have r_{31} closer to unity when thermalized. More generally, if one considers various optical depths (assuming local thermodynamic equilibrium with equal excitation temperatures), r_{31} greater than unity is indicative of warm, optically thin gas and a ratio less than unity is indicative of optically thick gas (e.g., Meier et al. 2001).

Therefore, while we can comment on whether the excitation of the CO J_{upper} state is likely to be sub-thermal or thermalized, determining the conditions of the gas more accurately requires modeling of multiple transitions (e.g., using large velocity gradient (LVG) models). Since one line ratio does not provide strong constraints, we do not perform LVG modeling as part of this work. In the following sections, we compare the r_{31} values found in the EGNog galaxies to previous studies at low and high redshifts and we discuss the implications of this work for the interpretation of CO measurements in intermediate- and high-redshift galaxies.

5.1. Comparison with Previous Work

To date, the study of CO line ratios in intermediate- and high-redshift galaxies has been dominated by work on extreme starbursting systems: SMGs and quasars. The CO lines from ($J = 1 \rightarrow 0$) up to ($J = 9 \rightarrow 8$) in quasars at $z \approx 2\text{--}4$ are well fit by a single component of highly excited gas (Riechers et al. 2006; Weiß et al. 2007; Riechers 2011). In contrast, while the high- J CO transitions in $z \approx 2\text{--}4$ SMGs are fit by similar highly excited gas, recent observations of the CO($J = 1 \rightarrow 0$) line in these systems reveal a diffuse, low-excitation component in addition to the highly excited component (Carilli et al. 2010; Riechers et al. 2011), similar to what has been observed in local ULIRGs (Papadopoulos et al. 2007; Greve et al. 2009). In contrast, the limited work on $z \approx 1\text{--}2$ SFGs suggests low-excitation gas similar to the Milky Way (Dannerbauer et al. 2009; Aravena et al. 2010). Since the EGNog galaxies are SFGs (lying on the MS), we restrict the rest of this discussion to SFGs (normal star-forming galaxies) at low and high redshifts.

To place the r_{31} values we measure at $z \approx 0.3$ in the context of previous work on normal SFGs, Figure 5 shows r_{31} versus approximate SFR for the EGNog galaxies (red diamonds) and a compilation of literature data, which includes three large surveys

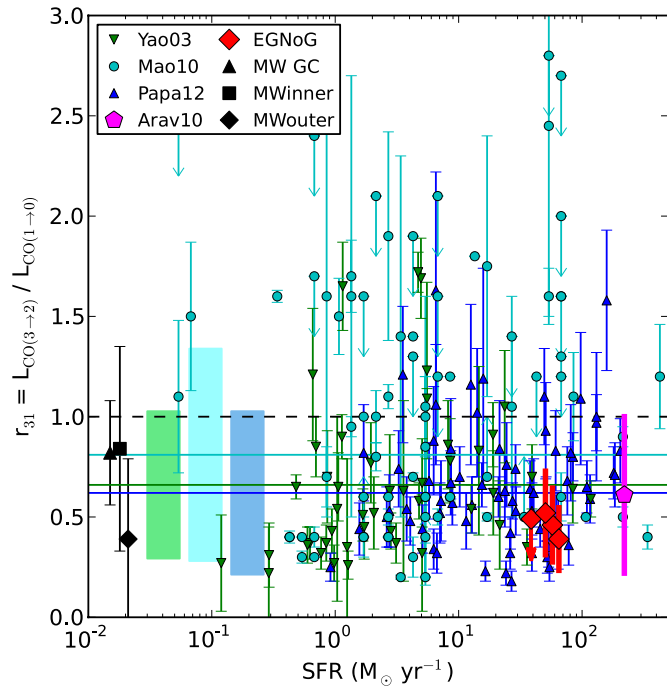


Figure 5. Compilation of r_{31} literature data. r_{31} is plotted against approximate SFR ($1.7 \times 10^{-10} L_{\text{FIR}}$ when an SFR is not available) for the following data sets: Yao et al. (2003) (Yao03), Mao et al. (2010) (Mao10), Papadopoulos et al. (2012) (Papa12), Aravena et al. (2010) (Arav10), this paper (EGNoG), and Fixsen et al. (1999) (MW GC, inner and outer). Milky Way points are shown at the left side of the plot for clarity. The horizontal dashed black line shows $r_{31} = 1$ and the horizontal solid lines indicate the average values for Yao03, Mao10, and Papa12 (the corresponding shaded rectangles show the standard deviation around the average values).

(A color version of this figure is available in the online journal.)

of r_{31} in nearby galaxies (Yao et al. 2003; Mao et al. 2010; Papadopoulos et al. 2012) as well as the study at $z = 1.5$ (Aravena et al. 2010). We plot r_{31} from our matched analysis (Section 4.3) for sources C2, C3, and C4 (values from Table 4, with 40% error bars to indicate potential systematic errors) and the upper limit for source C1 derived from the total line luminosities (Section 4.1, Table 2). While SFRs are available for the present survey and Aravena et al. (2010), the other three surveys only provide total infrared luminosities (L_{IR}) or far infrared luminosities (L_{FIR}) calculated from *Infrared Astronomical Satellite* fluxes. We use approximate SFRs of $1.7 \times 10^{-10} L_{\text{FIR}} M_{\odot} \text{ yr}^{-1}$ (L_{FIR} in L_{\odot} ; Kennicutt 1998) and $L_{\text{IR}}/L_{\text{FIR}} = 1.3$ (Graciá-Carpio et al. 2008) in Figure 5. Values for the Milky Way are plotted as well: the Galactic center (MW GC), inner disk (MWinner), and outer disk (MWouter) values, all in black, are taken from Fixsen et al. (1999) and plotted (slightly offset from one another) for illustrative purposes at the left side of the plot. The average r_{31} values of the Yao et al. (2003), Mao et al. (2010), and Papadopoulos et al. (2012) data sets are indicated by the horizontal lines of the corresponding color, with the corresponding shaded rectangles indicating the standard deviation around the average values. To guide the eye, the dashed black line shows $r_{31} = 1$.

Despite the large range of values observed, we find general agreement between our values, that of Aravena et al. (2010) and the average values of the local surveys, with the EGNog galaxies showing slightly lower r_{31} values than the other studies. Note that the Mao et al. (2010) survey found an average value of 0.81 for the entire sample, but a lower average of 0.61 for

Table 5
Summary of r_{31} from the Literature

Data Set	N	Redshift Range	SFR ^a ($M_{\odot} \text{ yr}^{-1}$)	r_{31}	
				Range	Mean
Milky Way	3			0.4–0.9	0.68
Mao 2010	61	0.0–0.04	0.03–200	0.2–1.9	0.81
Normal	7			0.3–1.5	0.61
Starburst	25			0.3–1.9	0.89
Yao 2003	60	0.007–0.05	0.1–100	0.2–1.7	0.66
Papa 2012	70	0.006–0.08	0.7–150	0.1–1.9	0.67
EGNoG	3	0.28–0.31	39–65	0.39–0.52	0.46
Arav 2010	1	1.52	220		0.61

Notes. The range and mean values are given for the following data sets: Fixsen et al. (1999) (Milky Way), Mao et al. (2010) (Mao et al. 2010), Yao et al. (2003) (Yao 2003), Papadopoulos et al. (2012) (Papa 2012), this paper (EGNoG) and Aravena et al. (2010) (Arav 2010). Columns 2–4 give the number of galaxies, redshift, and SFR ranges for each data set. For Mao et al. (2010), we also report the r_{31} range and average for the “normal” and “starburst” subsets.

^a SFR values are approximate (see Section 5.1).

galaxies classified as “normal,” based on SFR surface density as indicated by the far infrared luminosity and optical diameter. Further, the CO($J = 3 \rightarrow 2$) survey of local, low-SFR spirals by Wilson et al. (2012) find a lower value (using CO($J = 1 \rightarrow 0$) luminosities from Kuno et al. 2007) of $r_{31} \approx 0.2$, but note that the authors have not made any correction for differences in the fraction of each galaxy mapped by the two surveys. Their r_{31} value is at the low end of the spread of values plotted in Figure 5. The range and average r_{31} values for the points plotted (including number of galaxies, redshift, and SFR ranges) are given in Table 5.

In order to compare our values to the literature data, we first discuss the nature of the observations presented. Yao et al. (2003) observe 60 IR-luminous galaxies (most sources have $L_{\text{FIR}} > 10^{10} L_{\odot}$) selected from the SCUBA Local Universe Galaxy Survey. Each line is measured with a single pointing of a single-dish telescope: CO($J = 1 \rightarrow 0$) at the Nobeyama Radio Observatory, CO($J = 3 \rightarrow 2$) at the James Clerk Maxwell Telescope (JCMT). For both measurements, the beam size is $\approx 15''$, corresponding to physical sizes of ≈ 0.5 –13 kpc for their sample galaxies (≈ 0.5 –5 kpc for most of the sample).

Mao et al. (2010) measure the CO($J = 3 \rightarrow 2$) line for 125 nearby galaxies of various types (e.g., normal, SB, LIRG, ULIRG) using the Heinrich Hertz Telescope (HHT; beam size $\approx 22''$). This beam size corresponds to a physical size of ≈ 0.25 –17 kpc for the sample galaxies (1.7 kpc on average). The CO($J = 1 \rightarrow 0$) data for their sample were taken from the literature and therefore the beam size depends on the telescope used. In their analysis, Mao et al. (2010) only use those galaxies for which they found IRAM 30 m CO($J = 1 \rightarrow 0$) data (61), which have a beam size matching the HHT CO($J = 3 \rightarrow 2$) data. These measurements are plotted with error bars in Figure 5. Galaxies with CO($J = 1 \rightarrow 0$) data from other sources are reported as upper or lower limits.

Papadopoulos et al. (2012) examine a composite sample of 70 LIRGs in the nearby universe ($z \leq 0.1$) spanning a wide range of morphologies. They present new measurements of 36 galaxies and data from the literature for 34 more. The new measurements use the IRAM 30 m telescope for CO($J = 1 \rightarrow 0$) (beam size $\approx 22''$) and the JCMT for CO($J = 3 \rightarrow 2$) (beam

size $\approx 14''$), and therefore are not observed with the same beam size. The authors do not comment on matching beam sizes in the new measurements or those from the literature.

The galaxy in which Aravena et al. (2010) measure r_{31} , BzK-21000 at $z = 1.5$, was observed in the CO($J = 3 \rightarrow 2$) line with the Plateau de Bure Interferometer by Dannerbauer et al. (2009) and in the CO($J = 1 \rightarrow 0$) line with the Very Large Array in C and D configurations (Aravena et al. 2010). In both cases, the source is unresolved or marginally resolved, so the measured fluxes should represent the total emission of the galaxy.

The three samples of nearby galaxies are observed with single-dish instruments, typically sampling the inner portion of the molecular gas disk of the observed galaxies. This is different from the r_{31} measurements for the EGNog galaxies (Table 4) and the galaxy at $z = 1.5$ (Aravena et al. 2010), for which the emission from the entire gas disk is observed. We note that a gradient in r_{31} has been observed in nearby galaxies (Dumke et al. 2001), with higher values measured in the centers. This can be inferred from the Milky Way measurements (Fixsen et al. 1999) as well. This effect may well account for the EGNog and Aravena et al. (2010) measurements appearing systematically lower than the average values reported by the surveys observing the central regions of nearby galaxies. Supporting this explanation, our analysis in Section 4.4 suggests that r_{31} is higher in the centers of the EGNog galaxies (more in line with the average values of the local surveys) compared to r_{31} averaged over the entire disk. However, with such a large spread in values and inhomogeneous data sets, it is difficult to draw any robust conclusions on this point.

5.2. Implications

We have measured $r_{31} = 0.46 \pm 0.07$ (with systematic errors of up to 40%) in three galaxies at $z \approx 0.3$, suggestive of optically thick, sub-thermal gas. Despite being massive and highly star-forming (with SFRs of $50\text{--}65 M_{\odot} \text{ yr}^{-1}$ and stellar masses of $\approx 2 \times 10^{11} M_{\odot}$), the excitation of the gas in these galaxies is consistent with SFGs like local spirals, not starbursting systems like ULIRGs, SMGs, and quasars. Since the EGNog galaxies have been selected from the MS of star-forming galaxies at $z = 0.3$, our findings suggest that galaxies on the MS, over a range of star formation activity, harbor sub-thermally excited gas. Therefore, we suggest that CO line ratios similar to those observed in local spiral galaxies are appropriate for MS star-forming galaxies.

The extension of the EGNog results to MS star-forming galaxies means that sub-thermal line ratios are appropriate for the $z \sim 1\text{--}2$ SFGs in which Tacconi et al. (2010) and Daddi et al. (2010) report high molecular gas fractions (20%–80%). Tacconi et al. and Daddi et al. estimated the molecular gas mass associated with the observed $J_{\text{upper}} > 1$ CO luminosity assuming sub-thermal r_{31} line ratios and a Milky-Way-like α_{CO} (Daddi et al. 2010 used a slightly smaller value for α_{CO}). As the conversion factor is a complex problem, expected to vary as a function of gas excitation, density, metallicity and radiation field (Shetty et al. 2011; Leroy et al. 2011), the results of this work do not directly inform the choice of conversion factor. However, the r_{31} line ratios of the EGNog gas excitation sample support the assumption of a sub-thermal line ratio in these studies. Specifically, Tacconi et al. (2010) use $r_{31} = 0.5$ to calculate molecular gas masses, which is consistent with our results (Daddi et al. 2010 observed the CO($J = 2 \rightarrow 1$) line and assume a sub-thermal r_{21}).

6. CONCLUSIONS

This paper presents the gas excitation sample of the EGNog survey. We report robust detections of the CO($J = 3 \rightarrow 2$) and CO($J = 1 \rightarrow 0$) lines in three galaxies at $z \approx 0.3$, and an upper limit for the fourth galaxy. The average r_{31} value for this sample is 0.46 ± 0.07 , with systematic errors of up to 40%. This value is consistent with published r_{31} values for MS star-forming galaxies at $z \approx 0$ as well as the single measurement of at $z > 0.3$ (Aravena et al. 2010). The sub-thermal excitation of the CO($J = 3 \rightarrow 2$) line suggests the excitation state of the molecular gas in these galaxies is similar to local spirals, and is not indicative of an SB. We conclude that the galaxies in our sample (and by extension, the MS galaxies at $z \sim 1\text{--}2$ studied by Tacconi et al. 2010 and Daddi et al. 2010) harbor cold, optically thick molecular gas despite being massive and highly star-forming.

The authors thank the anonymous referee for helpful comments and Eve Ostriker and Adam Leroy for useful discussions. A. Bauermeister thanks Statia Cook, Dick Plambeck, and Peter Williams for useful discussions on the reduction and analysis of the EGNog data. A. Bolatto acknowledges partial support from grants CAREER NSF AST-0955836, NSF AST-1139998, as well as a Cottrell Scholar award from the Research Corporation for Science Advancement. We thank the OVRO/CARMA staff and the CARMA observers for their assistance in obtaining the data. Support for CARMA construction was derived from the Gordon and Betty Moore Foundation, the Kenneth T. and Eileen L. Norris Foundation, the James S. McDonnell Foundation, the Associates of the California Institute of Technology, the University of Chicago, the states of California, Illinois, and Maryland, and the National Science Foundation. Ongoing CARMA development and operations are supported by the National Science Foundation under a cooperative agreement, and by the CARMA partner universities.

APPENDIX A

DATA REDUCTION AND FLUX MEASUREMENT

A.1. Data Reduction

Each data set is reduced and calibrated as follows. The data are flagged for antenna–antenna shadowing as well as any other issues during the observation. The instrument bandpass is calibrated with `mfcal` on a bright passband calibrator. The time-dependent antenna gains (from atmospheric variation) are derived by performing a `selfcal` on the phase calibrator with an averaging interval of 18 minutes (the timescale of switching between the source and phase calibrator). For sources C1 and C2, the phase calibrator, 0854+201, is $\approx 10\%$ polarized, which required additional steps in the reduction of the 3 mm data (observed with linearly polarized feeds). This is described in more detail in the full survey paper (Bauermeister et al. 2012).

For each data set, the flux of the phase calibrator is set during the antenna gain calibration in order to properly set the flux scale of the data. The flux of each phase calibrator is assumed to be constant over timescales of weeks, and is therefore determined from the best data sets of the survey using `bootflux` on bandpass-calibrated, phase-only gain-calibrated data with Mars or MWC349 as a primary flux calibrator. The brightness temperature of Mars is set by the CARMA system using the Caltech thermal model of Mars (courtesy of Mark Gurwell), which includes seasonal variations in temperature and can be accessed in MIRIAD using `marstb`. This model gives

brightness temperatures ≈ 218 K at 266 GHz and ≈ 208 – 200 K at 88 GHz for 2011 August–November observations, and ≈ 201 K at 266 GHz for 2012 April observations. For MWC349 we set the flux to 1.2 Jy at 88 GHz, the typical value from historical flux monitoring at CARMA. The fluxes used for each phase calibrator are as follows: for the 3 mm data (≈ 89 GHz, 2010 August–November), the flux of 0854+201 is set to 4 Jy (9% linearly polarized), 1357+193 0.8 Jy, and 1310+323 1.7 Jy. For the 1 mm data (≈ 265 GHz, 2011 August and 2012 April) the flux of 0854+201 is set to 2 Jy in 2011 August and 4 Jy in 2012 April, 1224+213 0.6 Jy in 2012 April and 1310+323 0.6 Jy in 2011 August.

Images are produced combining all fully calibrated data sets for each source. We used *invert*, weighting the visibilities by the system temperature as well as using a Briggs’ visibility weighting robustness parameter (Briggs 1995) of 0.5. Since CARMA is an inhomogeneous array (these data use both the 10 m and 6 m dishes), we also use *options=mosaic* in the *invert* step in order to properly handle the three different primary beams patterns (10–10 m, 10–6 m and 6–6 m). All observations are single pointing. The resulting images are primary-beam-corrected. In most of the sources discussed here, we map the 3 mm data ($\text{CO}(J = 1 \rightarrow 0)$ line) channel by channel, using the full spectral resolution of 42 km s^{-1} . We match this resolution in the 1 mm data ($\text{CO}(J = 3 \rightarrow 2)$ line) by averaging channels in sets of three. The exception to this scheme is source C1, which has emission spread over a very wide velocity range, requiring more channel averaging to increase the signal to noise.

We deconvolve each image with *mosddi* (the mosaic version of *clean*), cleaning down to the rms noise within a single channel, within a cleaning box selected by eye to include only source emission. We clean only channels which contain visible source emission. Cleaning down to a specified noise level is preferred to using a set number of clean iterations due to the nature of the spectral line emission: some channels will contain more flux and therefore require more clean iterations. In tests using a model source of known flux inserted into real data (emission-free channels), we found a 1σ cutoff to best extract the true source emission without overestimating the flux over a range of detection significance levels, with a 10%–30% uncertainty in the recovered flux (depending on the significance of the signal). The final clean images are produced by *restor*, which convolves the clean component image with the clean beam (calculated by fitting a Gaussian to the combined mosaic beam given by *mospsf*), and adds the residuals from the cleaning process.

A.2. Flux Estimation

Total source fluxes in the CO lines are calculated by summing “source” pixels in each “source” velocity plane of the image. The source velocity planes are selected by eye. The source pixels are those within the “source” region which are not masked by our smooth mask (adapted from Dame 2011). The smooth mask is created by applying a 2σ clip to a smoothed version of the image: Hanning smoothing is done along the velocity axis, and each velocity plane is convolved with a Gaussian beam twice the size of the original synthesized beam. This smoothed mask is used in order to exclude noise pixels but still capture low-level emission that a simple clip would miss. In our own testing (using a model source of known flux inserted into real data), we found a 2σ clip to best reproduce the true flux over a range of detection significance levels.

The appropriate source region size is selected to recover all of the flux without including the negative bowl. Since we do not have single-dish data to complement the interferometric data presented here, our data sets are missing the shortest *uv* spacings. As a result, the emission in the clean images sits in a negative bowl, which will affect the measured flux (calculated by summing pixels within a given radius). In order to accurately estimate the flux, we use the radius at which the radial profile of the enclosed flux first peaks, thereby excluding the negative bowl. The radial profiles of the enclosed flux for sources C2, C3, and C4 are shown in Figure 6: $\text{CO}(J = 1 \rightarrow 0)$ in red in the top panels and $\text{CO}(J = 3 \rightarrow 2)$ in blue in the bottom panels. The profiles for both *uv* selections (all and matched), unmasked and masked are shown for each transition. The negative bowl is most evident in the unmasked profiles (dotted and dash-dotted lines), in which the enclosed flux peaks and then decreases with radius. The radius of the first peak of the enclosed flux distribution is $6''.5$ for the $\text{CO}(J = 1 \rightarrow 0)$ data and $4''.5$ for the $\text{CO}(J = 3 \rightarrow 2)$ data (shown by the vertical dotted black lines). These radii are used in the calculation of total fluxes throughout this work.

The error in the flux measurement is estimated from the standard deviation of the measured fluxes using different velocity channel averaging and starting channel, using three different methods of calculating the flux in each case. The three methods are: the 2σ masking technique described above, the same masking technique with a 3σ clip, and the simple addition of all pixels (no mask) within the source region.

We performed extensive testing of our analysis technique in order to choose the parameters of the reduction to eliminate systematic offsets and minimize the uncertainty due to noise (as described above). We find a 10%–30% error in the flux measurement coming from noise in the data reduction and analysis steps. From this, we take an average uncertainty of 20% in the flux estimated in each channel, which results in a uncertainty in the total flux of $20\%(N_{\text{ch}})^{-0.5}$ (N_{ch} is the number of velocity channels in which the flux is summed). For the total flux values reported in Table 2, we estimate the error from the variation in the flux calculated using different channel averaging, flux measurement method, etc. (described above), which is consistent with the $20\%(N_{\text{ch}})^{-0.5}$ we expect. In our analysis of the integrated flux velocity profiles (Section 4.3), we assume errors of 20% in the flux in each channel.

Further, these data suffer from systematic errors due to absolute flux calibration and primary beam correction. We set the flux scale in our data set based on a primary flux calibrator (Mars or MWC349), the flux of which is only known to $\approx 20\%$. In the primary beam correction of the data set, pointing and focus errors at the time of the observations as well as errors in the primary beam model can significantly reduce image fidelity, leading to errors in the measured fluxes of $\approx 20\%$ (see SKA Memo 103, Wright & Corder 2008). Combining these systematic errors in quadrature, we estimate that our flux measurements suffer from systematic uncertainties of up to $\approx 30\%$. We consider all these factors in the presentation of our data in Table 2: for the line flux (S_{CO}), we report the measured error; for L'_{CO} , we include a 30% systematic error (added in quadrature to the measured error in S_{CO}).

APPENDIX B MOMENT MAPS

In this appendix, we present the moment maps, optical images and spectra of the CO emission in the EGN0g bin C galaxies.

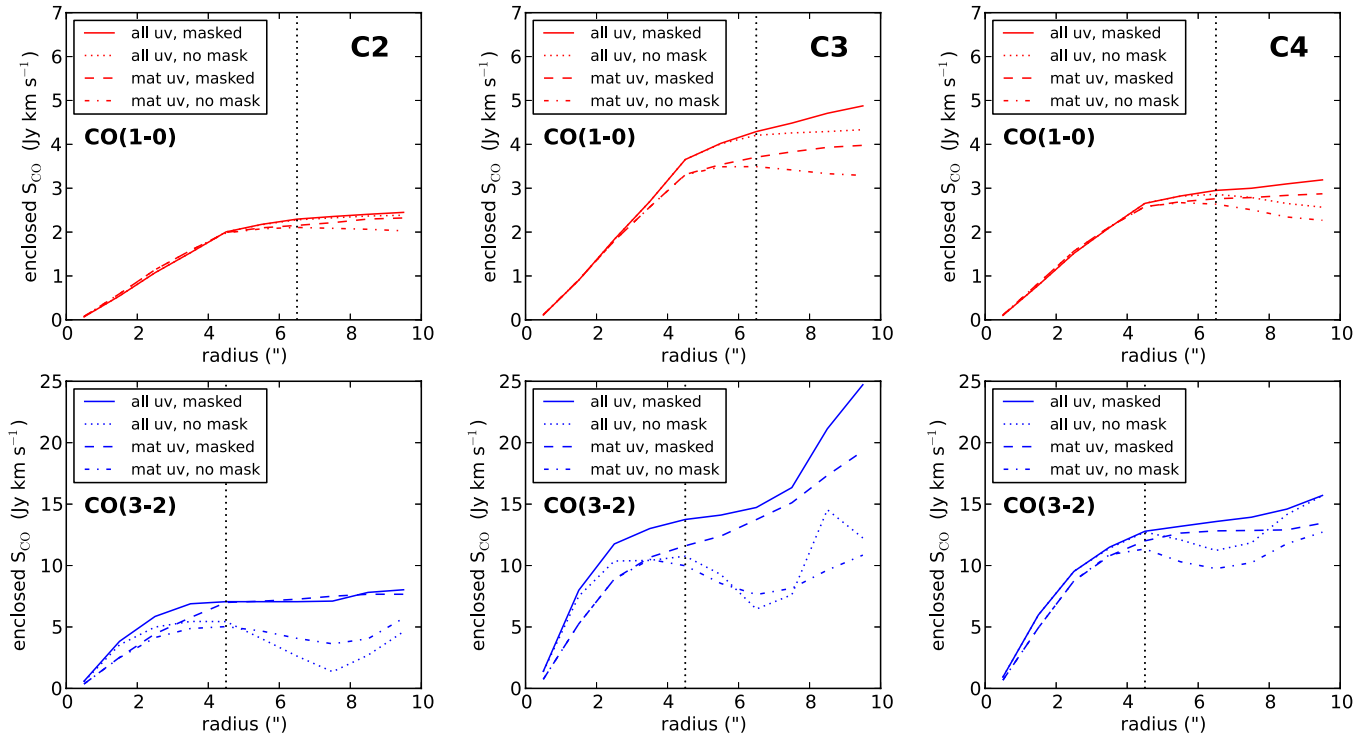


Figure 6. Enclosed flux (S_{CO} in Jy km s^{-1}) as a function of radius for sources C2, C3, and C4. The top panels show the $\text{CO}(J = 1 \rightarrow 0)$ line flux for four cases: all uv data, masked (solid) and unmasked (dotted); matched uv data, masked (dashed) and unmasked (dash-dotted). The bottom panels show the $\text{CO}(J = 3 \rightarrow 2)$ line flux for the same four cases. The vertical black dotted lines indicate the radius at which the enclosed flux peaks ($6''.5$ for $\text{CO}(J = 1 \rightarrow 0)$, $4''.5$ for $\text{CO}(J = 3 \rightarrow 2)$). (A color version of this figure is available in the online journal.)

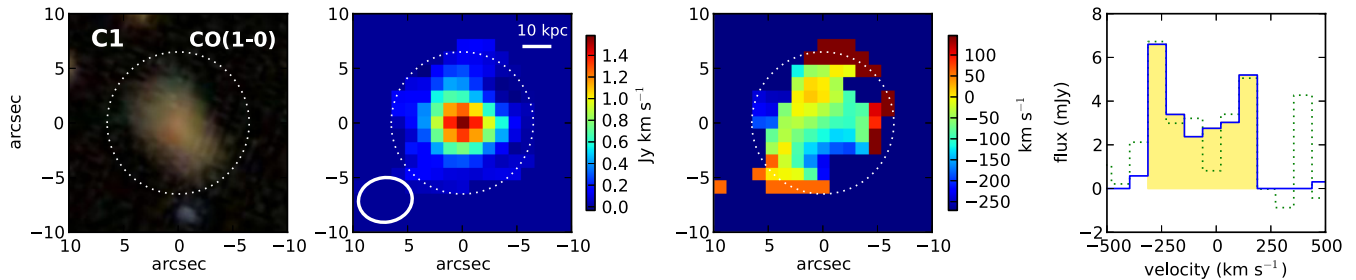


Figure 7. $\text{CO}(J = 1 \rightarrow 0)$ emission in source C1. The left panel shows the optical image. The moment 0 and moment 1 maps are displayed in the left middle and right middle panels, respectively. The dotted white ellipse indicates the source region ($6''.5$ radius). In the moment 0 map, the beam size is indicated by the solid white ellipse in the lower left corner and a 10 kpc scale bar is given in the top right. The far right panel shows the spectrum of the galaxy: the solid blue line is calculated with masking, the dotted green line is without.

(A color version of this figure is available in the online journal.)

Figure 7 shows the $\text{CO}(J = 1 \rightarrow 0)$ emission in galaxy C1 (we do not detect $\text{CO}(J = 3 \rightarrow 2)$ emission in galaxy C1). Figures 8–10 show both $\text{CO}(J = 1 \rightarrow 0)$ and $\text{CO}(J = 3 \rightarrow 2)$ emission in galaxies C2, C3 and C4, using all uv data and matched uv data.

APPENDIX C

RADIAL DEPENDENCE OF r_{31}

Since r_{31} traces the local excitation conditions of the molecular gas of a galaxy, it is expected to vary within the disk of the galaxy. In fact, Dumke et al. (2001) found $\text{CO}(J = 3 \rightarrow 2)$ emission to be more centrally concentrated than $\text{CO}(J = 1 \rightarrow 0)$ emission in nearby galaxies, so that r_{31} decreased with radius. To look for radial variation in r_{31} in the EGN0G data, we cannot compare the emission maps directly due to the marginal resolution of the galaxies and the different uv coverage of the

two transitions. We emphasize that the uv coverage (and thus different spatial resolution) of each transition determines the shape of the radial profile of the enclosed flux (see Figure 6 in Appendix A), making a direct ratio of the two radial profiles meaningless without perfectly matched uv sampling (even our matched uv data do not meet this criterion due to different sampling within the allowed uv -distance range).

In order to disentangle the true emission distribution from the uv sampling, we fit a two-dimensional Gaussian to the total intensity (moment 0) map of each CO transition using the MIRIAD program `imfit`. The program fits for the position, peak intensity, total flux, size, and deconvolved source size. We perform the Gaussian fit on four versions of the moment 0 map for each transition in each galaxy: for each uv data selection (all and matched), we use moment 0 maps produced with and without 2σ smooth masking. In order to derive a good fit to the source emission, we restrict the Gaussian fit to the standard

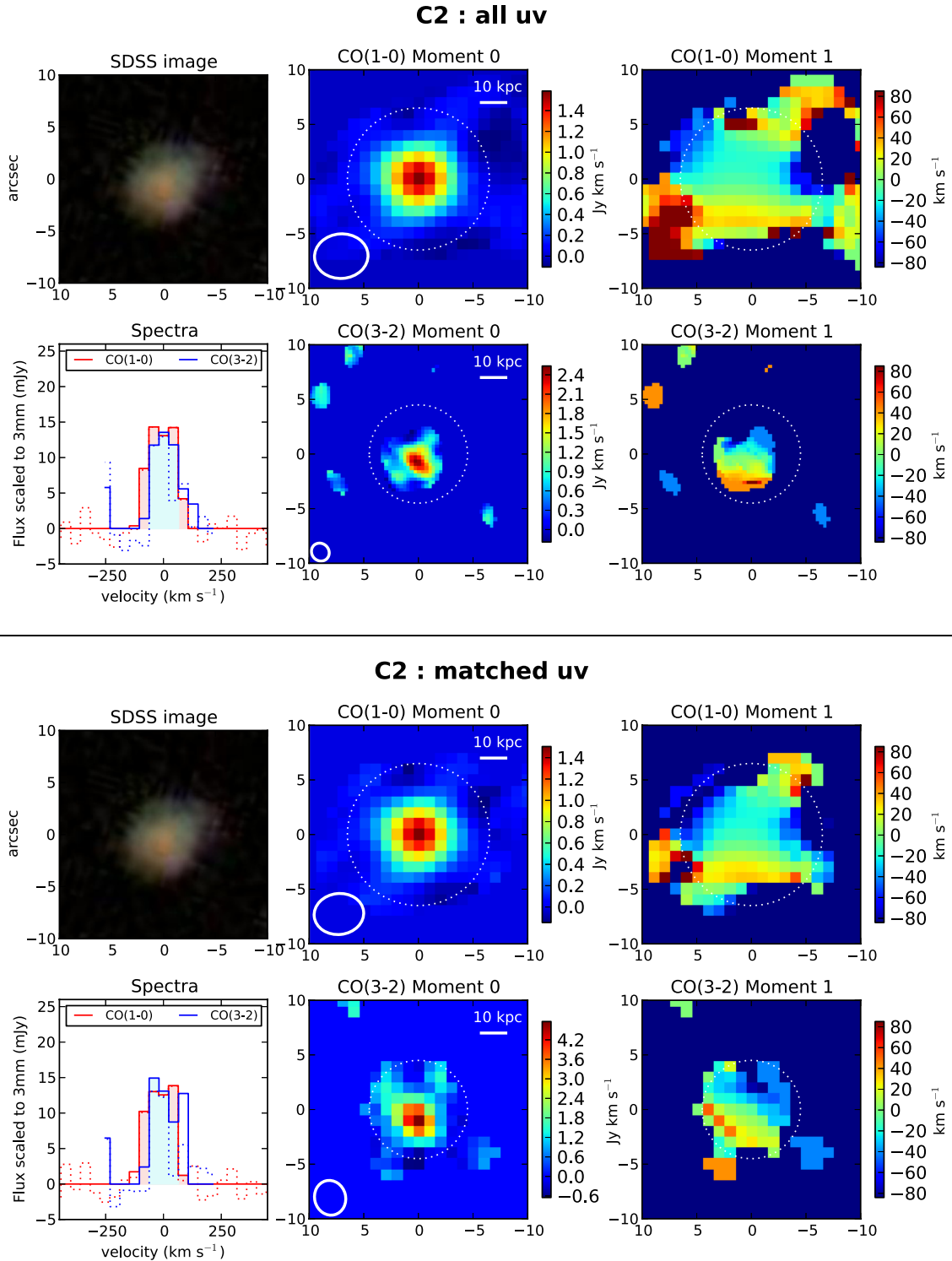
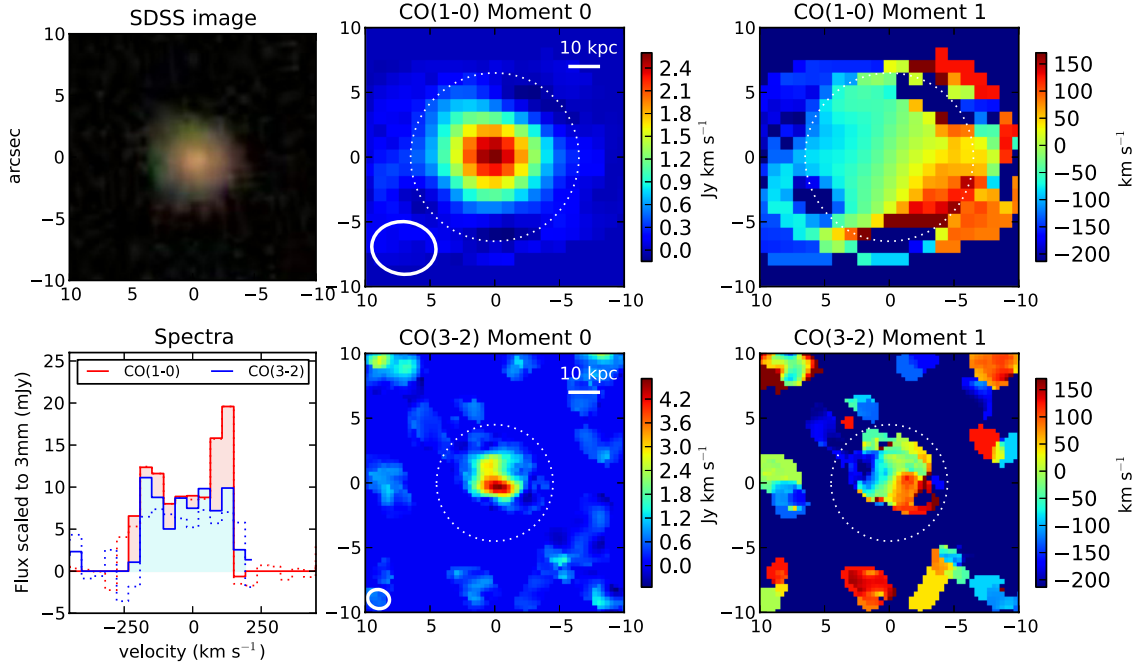
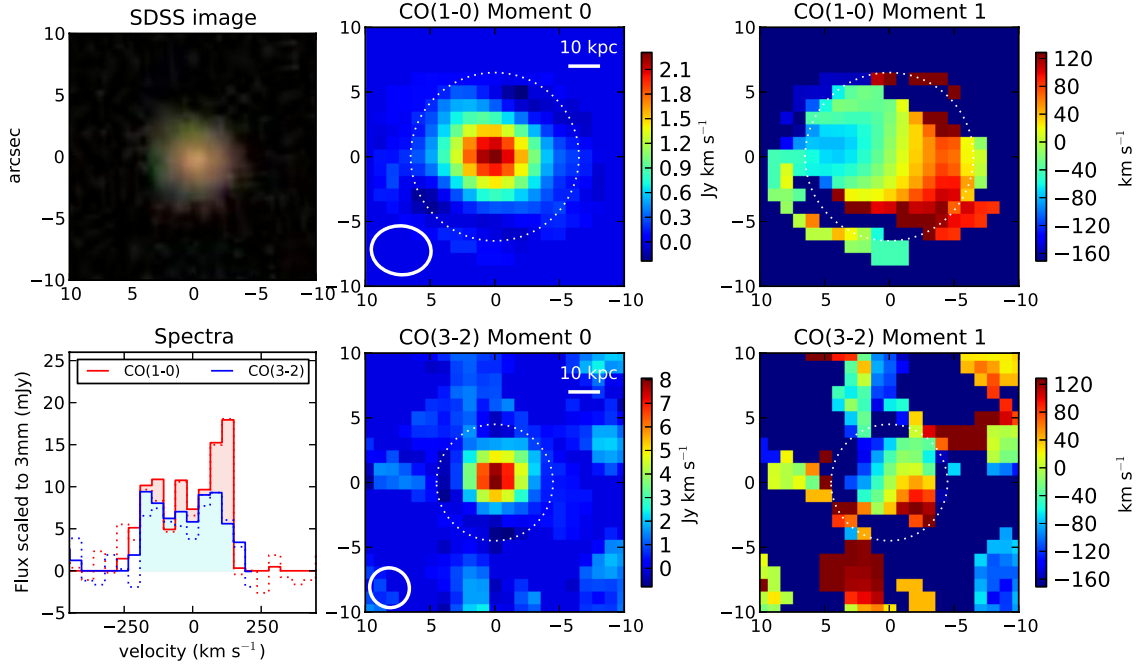


Figure 8. Two sets of six panels showing the optical image (top left), moment maps (middle and right panels), and spectra (bottom left) for source C2: the top set uses all uv data, the bottom set uses matched uv data. In each set, the top middle and right panels show the moment 0 (total intensity) and moment 1 (intensity-weighted mean velocity) maps, respectively, for the CO($J = 1 \rightarrow 0$) line. The bottom middle and right panels show the same, but for the CO($J = 3 \rightarrow 2$) line. The synthesized beam (solid white ellipse) and 10 kpc scale (white bar) are indicated in each middle panel. The dotted white circles in the middle and right panels show the source regions in which flux is summed (with radii of $6''.5$ and $4''.5$ for the CO($J = 1 \rightarrow 0$) and CO($J = 3 \rightarrow 2$) data, respectively, see Section A.2). The bottom left panels show the spectra in mJy, with the CO($J = 3 \rightarrow 2$) spectrum reduced by a factor of 4.5 to match the scale of the CO($J = 1 \rightarrow 0$) spectrum.

(A color version of this figure is available in the online journal.)

source region (Section A.2). The error in the fit total flux is calculated by propagating the errors on the fit peak intensity and (not deconvolved) size. Since these parameters are not independent, this error is likely an overestimate of the true error in the fit total flux.

The residual of each fit is inspected. We note that in general, the emission is fairly well fit by a Gaussian except for the CO($J = 3 \rightarrow 2$) transition in galaxies C2 and C3, which are observed at higher resolution. The structure present in these higher resolution images is not well fit by a Gaussian.

C3 : all uv**C3 : matched uv****Figure 9.** Same as Figure 8, but for source C3.

(A color version of this figure is available in the online journal.)

We look for a radial dependence in r_{31} by comparing the ratio calculated from the fit total fluxes to the ratio calculated from the deconvolved peak intensities. The results are presented in Table 6. For each galaxy, for each combination of uv data selection (all, matched) and masking (no mask, masked), we derive the deconvolved peak brightness temperature (T_b) for each CO transition and calculate r_{31} from the deconvolved peak intensities as well as the fit total fluxes (all values and errors

are derived from the parameters of the Gaussian fitting) The rest-frame peak brightness temperature (in kelvin) is given by

$$T_b = \frac{h\nu_0}{k_B \ln \left[\frac{2h\nu_0^3}{c^2(1+z)^3 I_{\text{peak}}} + 1 \right]}, \quad (\text{C1})$$

where ν_0 is the rest frequency of the transition and I_{peak} is the observed peak specific intensity ($\text{erg s}^{-1} \text{cm}^{-2} \text{Hz}^{-1} \text{Sr}^{-1}$). We

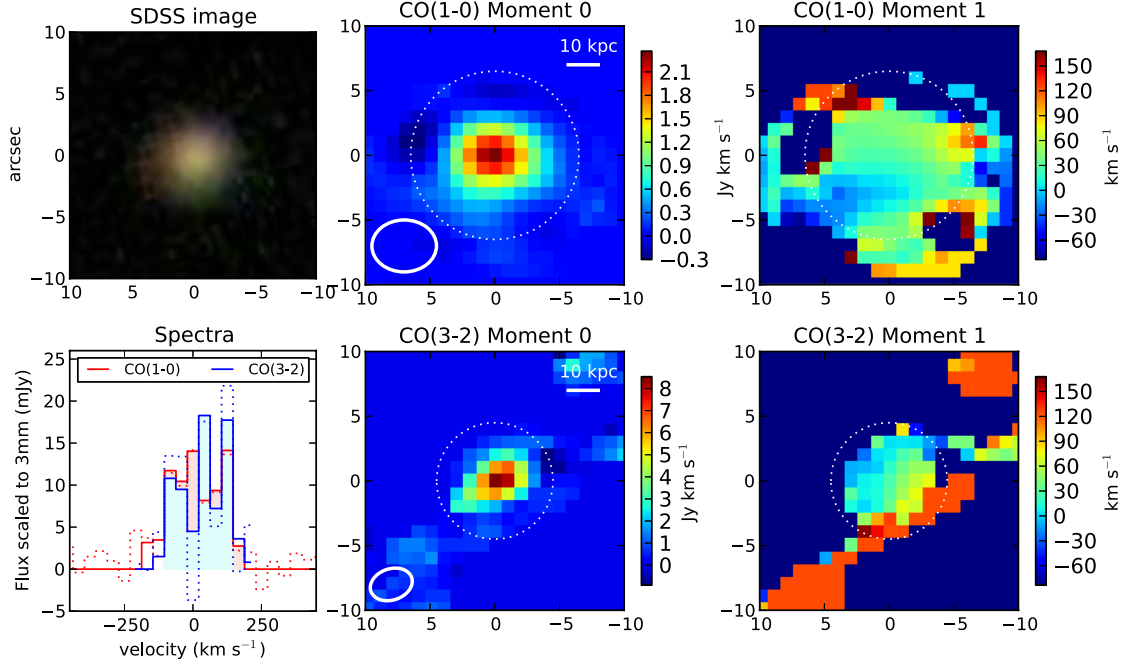
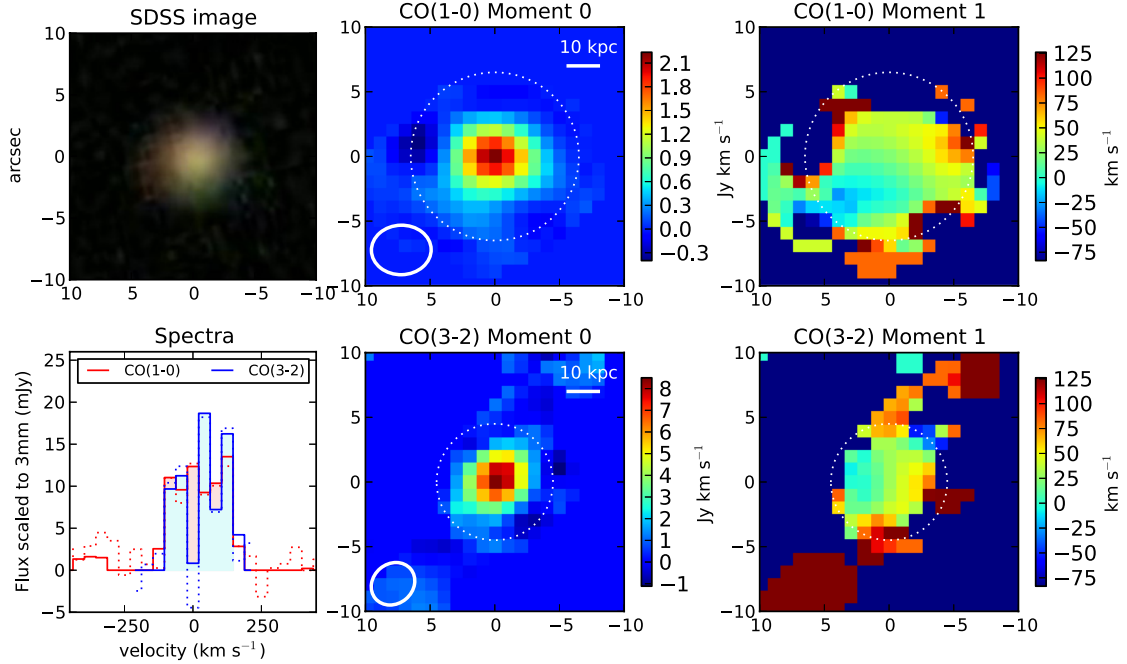
C4 : all uv**C4 : matched uv**

Figure 10. Same as Figure 8, but for source C4.
(A color version of this figure is available in the online journal.)

calculate I_{peak} from the velocity width (ΔV in km s^{-1}), fit total flux (S_{CO} in Jy km s^{-1}), and fit deconvolved size ($\text{FWHM}_{\text{major}}$ and $\text{FWHM}_{\text{minor}}$ in arcseconds):

$$I_{\text{peak}} = \frac{4(\ln 2)(206265^2)S_{\text{CO}}}{\pi(10^{23})\Delta V\text{FWHM}_{\text{major}}\text{FWHM}_{\text{minor}}}. \quad (\text{C2})$$

The ratio of the lines, r_{31} , is calculated from the line flux (total or peak) according to Equations (2) and (3). Note that this ratio

is not equivalent to the ratio of the brightness temperatures as defined here (see discussion in Section 5).

The errors in the quantities given in Table 6 are calculated from the errors in the relevant fit parameters reported by *imfit*. We estimate the error in the deconvolved source sizes ($\text{FWHM}_{\text{major}}$ and $\text{FWHM}_{\text{minor}}$) from the spread in the four estimates (all and matched uv , with and without masking) for each transition, for each galaxy. For each quantity, we report the

Table 6
Gaussian Fit T_b and r_{31}

Name	uv Sel.	Gaussian Fit Peak T_b		Gaussian Fit r_{31}	
		CO(1–0)	CO(3–2)	Peak	Total
C2	All	1.83 ± 0.32	3.79 ± 0.40	0.75 ± 0.54	0.41 ± 0.26
		1.83 ± 0.32	3.71 ± 0.34	0.68 ± 0.47	0.48 ± 0.29
	Mat	1.91 ± 0.13	0.37 ± 0.13
		1.90 ± 0.15	3.86 ± 0.47	0.72 ± 0.42	0.42 ± 0.20
	Avg	1.87 ± 0.23	3.79 ± 0.40	0.72 ± 0.48	0.42 ± 0.22
C3	All	1.78 ± 0.32	3.45 ± 0.35	0.53 ± 0.40	0.44 ± 0.14
		1.65 ± 0.27	3.51 ± 0.51	0.74 ± 0.67	0.38 ± 0.22
	Mat	1.68 ± 0.28	3.75 ± 0.37	0.94 ± 0.67	0.35 ± 0.07
		1.65 ± 0.27	3.65 ± 0.38	0.88 ± 0.66	0.36 ± 0.11
	Avg	1.69 ± 0.28	3.59 ± 0.40	0.77 ± 0.60	0.38 ± 0.13
C4	All	2.03 ± 0.60	4.10 ± 0.40	0.76 ± 0.72	0.48 ± 0.38
		2.09 ± 0.33	4.16 ± 0.44	0.74 ± 0.46	0.45 ± 0.16
	Mat	2.08 ± 0.36	3.89 ± 0.31	0.57 ± 0.34	0.50 ± 0.15
		2.23 ± 0.37	0.45 ± 0.19
	Avg	2.11 ± 0.42	4.05 ± 0.38	0.69 ± 0.50	0.47 ± 0.22
	Mean	1.89 ± 0.19	3.81 ± 0.23	0.73 ± 0.31	0.42 ± 0.11
	σ	0.21	0.23	0.04	0.04

Notes. Deconvolved, rest-frame peak brightness temperatures (peak T_b) and r_{31} calculated from the deconvolved peak intensities (r_{31} peak) and from the total fluxes (r_{31} total). All values are calculated using the parameters obtained from the Gaussian fitting. For each galaxy, we report five values in each column: one for each of the four data selections used (all uv (All) and matched uv (Mat), without masking first and with masking second) and the average value with a typical error. From the average values for each galaxy, we calculate the mean (with an uncertainty from the errors in the average values) and the standard deviation for each quantity, presented in the bottom rows.

average value for each galaxy, taking the error to be the average fractional error. From the average values, we report the mean (with an uncertainty from the errors in the average values) and standard deviation for the sample as a whole.

We find peak brightness temperatures of approximately 2 K and 4 K for CO($J = 1 \rightarrow 0$) and CO($J = 3 \rightarrow 2$), respectively. This is lower than the excitation temperature observed in giant molecular clouds (GMCs) in the Milky Way (e.g., 10–30 K, Polychroni et al. 2012), as expected since the filling factor for GMCs in the molecular gas disk is less than unity.

While the value of r_{31} is a complex problem (discussed in detail in Section 5), the larger brightness temperature of the CO($J = 3 \rightarrow 2$) line (relative to the CO($J = 1 \rightarrow 0$) line) may be explained simply by differing excitation temperatures or filling factors. For instance, if the CO($J = 1 \rightarrow 0$) traces an additional diffuse, lower-excitation gas component not traced by the CO($J = 3 \rightarrow 2$) line (as observed in SMGs by Carilli et al. 2010; Riechers et al. 2011), the average brightness temperature of the CO($J = 3 \rightarrow 2$) line will be higher than the CO($J = 1 \rightarrow 0$) line. On the other hand, a larger brightness temperature in the CO($J = 3 \rightarrow 2$) line may be due to a larger filling factor for the CO($J = 3 \rightarrow 2$) emission. Our Gaussian fits find systematically smaller sizes for the CO($J = 3 \rightarrow 2$) emission relative to the CO($J = 1 \rightarrow 0$) sizes, which is consistent with the results of Dumke et al. (2001), who found CO($J = 3 \rightarrow 2$) emission to be more centrally concentrated than CO($J = 1 \rightarrow 0$) emission in nearby galaxies. Since the molecular gas disks of galaxies tend to have an exponential radial profile (e.g., Regan et al. 2001; Leroy et al. 2009), the

gas-rich central region of the galaxy will account for a larger fraction of the CO($J = 3 \rightarrow 2$) emission area, increasing the effective filling factor of the CO($J = 3 \rightarrow 2$) emission relative to that of the CO($J = 1 \rightarrow 0$) emission. Assuming a constant excitation temperature for both transitions, the larger effective filling factor of CO($J = 3 \rightarrow 2$) emission would produce a higher brightness temperature, as we observe.

While the error bars are large, we do find the ratio of the deconvolved peak intensities (representative of the conditions in the central region of the galaxy) to be systematically higher than the ratio of the total fluxes. In our sample, we find $r_{31}(\text{peak}) = 0.73 \pm 0.31$, with a standard deviation across the three galaxies of 0.04. We compare this to the ratio calculated from total fluxes: 0.42 ± 0.11 , with a standard deviation of 0.04. While the small standard deviations in our r_{31} values show consistency between the three galaxies, these results are plagued by sizable uncertainties as a result of fitting data with only modest signal to noise (note that our error estimates are conservative and may in fact be overestimating the true error). Therefore, we conclude (but not robustly) that r_{31} is higher in the center of the EGN0G galaxies than in the molecular disk as a whole (consistent with Dumke et al. 2001).

REFERENCES

- Abazajian, K. N., Adelman-McCarthy, J. K., Agüeros, M. A., et al. 2009, *ApJS*, **182**, 543
- Aravena, M., Carilli, C., Daddi, E., et al. 2010, *ApJ*, **718**, 177
- Baker, A. J., Tacconi, L. J., Genzel, R., Lehnert, M. D., & Lutz, D. 2004, *ApJ*, **604**, 125
- Baldwin, J. A., Phillips, M. M., & Terlevich, R. 1981, *PASP*, **93**, 5
- Bauermeister, A., Blitz, L., Bolatto, A. D., et al. 2012, *ApJ*, submitted
- Bayet, E., Gerin, M., Phillips, T. G., & Contursi, A. 2004, *A&A*, **427**, 45
- Bell, E. F., Papovich, C., Wolf, C., et al. 2005, *ApJ*, **625**, 23
- Bouché, N., Dekel, A., Genzel, R., et al. 2010, *ApJ*, **718**, 1001
- Briggs, D. S. 1995, *BAAS*, **27**, 1444
- Brinchmann, J., Charlot, S., White, S. D. M., et al. 2004, *MNRAS*, **351**, 1151
- Carilli, C. L., Daddi, E., Riechers, D., et al. 2010, *ApJ*, **714**, 1407
- Combes, F., Prugniel, P., Rampazzo, R., & Sulentic, J. W. 1994, *A&A*, **281**, 725
- Daddi, E., Bournaud, F., Walter, F., et al. 2010, *ApJ*, **713**, 686
- Daddi, E., Dickinson, M., Morrison, G., et al. 2007, *ApJ*, **670**, 156
- Dame, T. M. 2011, arXiv:1101.1499
- Dannerbauer, H., Daddi, E., Riechers, D. A., et al. 2009, *ApJL*, **698**, 178
- Downes, D., & Solomon, P. M. 1998, *ApJ*, **507**, 615
- Dumke, M., Nieten, C., Thuma, G., Wielebinski, R., & Walsh, W. 2001, *A&A*, **373**, 853
- Dutton, A. A., van den Bosch, F. C., & Dekel, A. 2010, *MNRAS*, **405**, 1690
- Elbaz, D., Daddi, E., Le Borgne, D., et al. 2007, *A&A*, **468**, 33
- Elbaz, D., Dickinson, M., Hwang, H. S., et al. 2011, *A&A*, **533**, A119
- Engel, H., Tacconi, L. J., Davies, R. I., et al. 2010, *ApJ*, **724**, 233
- Fixsen, D. J., Bennett, C. L., & Mather, J. C. 1999, *ApJ*, **526**, 207
- Graciá-Carpio, J., García-Burillo, S., Planesas, P., Fuente, A., & Usero, A. 2008, *A&A*, **479**, 703
- Greve, T. R., Papadopoulos, P. P., Gao, Y., & Radford, S. J. E. 2009, *ApJ*, **692**, 1432
- Helfer, T. T., Thornley, M. D., Regan, M. W., et al. 2003, *ApJS*, **145**, 259
- Hurt, R. L., Turner, J. L., Ho, P. T. P., & Martin, R. N. 1993, *ApJ*, **404**, 602
- Karim, A., Schinnerer, E., Martínez-Sansigre, A., et al. 2011, *ApJ*, **730**, 61
- Kauffmann, G., Heckman, T. M., Tremonti, C., et al. 2003, *MNRAS*, **346**, 1055
- Kennicutt, R. C., Jr. 1998, *ARA&A*, **36**, 189
- Kuno, N., Sato, N., Nakanishi, H., et al. 2007, *PASJ*, **59**, 117
- Leroy, A. K., Bolatto, A., Gordon, K., et al. 2011, *ApJ*, **737**, 12
- Leroy, A. K., Walter, F., Bigiel, F., et al. 2009, *AJ*, **137**, 4670
- Mao, R.-Q., Schulz, A., Henkel, C., et al. 2010, *ApJ*, **724**, 1336
- Mauersberger, R., Henkel, C., Walsh, W., & Schulz, A. 1999, *A&A*, **341**, 256
- Meier, D. S., Turner, J. L., Crosthwaite, L. P., & Beck, S. C. 2001, *AJ*, **121**, 740
- Noeske, K. G., Faber, S. M., Weiner, B. J., et al. 2007, *ApJL*, **660**, 47
- Pannella, M., Carilli, C. L., Daddi, E., et al. 2009, *ApJL*, **698**, 116
- Papadopoulos, P. P., Isaak, K. G., & van der Werf, P. P. 2007, *ApJ*, **668**, 815
- Papadopoulos, P. P., van der Werf, P., Xilouris, E. M., et al. 2012, *MNRAS*, **426**, 2601

- Polychroni, D., Moore, T. J. T., & Allsopp, J. 2012, *MNRAS*, **422**, 2992
- Pound, M. W., & Teuben, P. 2012, in ASP Conf. Ser. 461, *Astronomical Data Analysis Software and Systems XXI*, ed. P. Ballester, D. Egret, & N. P. F. Lorente (San Francisco, CA: ASP), 565
- Rahman, N., Bolatto, A. D., Xue, R., et al. 2012, *ApJ*, **745**, 183
- Regan, M. W., Thornley, M. D., Helfer, T. T., et al. 2001, *ApJ*, **561**, 218
- Rickard, L. J., & Blitz, L. 1985, *ApJL*, **292**, 57
- Riechers, D. A. 2011, *ApJ*, **730**, 108
- Riechers, D. A., Hodge, J., Walter, F., Carilli, C. L., & Bertoldi, F. 2011, *ApJL*, **739**, 31
- Riechers, D. A., Walter, F., Carilli, C. L., et al. 2006, *ApJ*, **650**, 604
- Rodighiero, G., Daddi, E., Baronchelli, I., et al. 2011, *ApJL*, **739**, 40
- Sanders, D. B., Scoville, N. Z., Young, J. S., et al. 1986, *ApJL*, **305**, 45
- Sault, R. J., Teuben, P. J., & Wright, M. C. H. 2011, in *Astrophysics Source Code Library*, 6007
- Sheth, K., Blain, A. W., Kneib, J.-P., et al. 2004, *ApJL*, **614**, 5
- Shetty, R., Glover, S. C., Dullemond, C. P., et al. 2011, *MNRAS*, **415**, 3253
- Solomon, P. M., Downes, D., Radford, S. J. E., & Barrett, J. W. 1997, *ApJ*, **478**, 144
- Solomon, P. M., & Vanden Bout, P. A. 2005, *ARA&A*, **43**, 677
- Strauss, M. A., Weinberg, D. H., Lupton, R. H., et al. 2002, *AJ*, **124**, 1810
- Tacconi, L. J., Genzel, R., Neri, R., et al. 2010, *Natur*, **463**, 781
- Tacconi, L. J., Genzel, R., Smail, I., et al. 2008, *ApJ*, **680**, 246
- Wang, J. L., Xia, X. Y., Mao, S., et al. 2006, *ApJ*, **649**, 722
- Weiß, A., Downes, D., Neri, R., et al. 2007, *A&A*, **467**, 955
- Weiß, A., Downes, D., Walter, F., & Henkel, C. 2005a, *A&A*, **440**, L45
- Weiß, A., Walter, F., & Scoville, N. Z. 2005b, *A&A*, **438**, 533
- Williams, P. K. G., Law, C. J., & Bower, G. C. 2012, *PASP*, **124**, 624
- Wilson, C. D., Warren, B. E., Israel, F. P., et al. 2012, *MNRAS*, **424**, 3050
- Wright, M., & Corder, S. 2008, SKA Memorandum Series, 103 (http://www.skatelescope.org/uploaded/57231_103_Memo_Wright.pdf)
- Yao, L., Seaquist, E. R., Kuno, N., & Dunne, L. 2003, *ApJ*, **588**, 771
- York, D. G., Adelman, J., Anderson, J. E., Jr., et al. 2000, *AJ*, **120**, 1579
- Young, J. S., Xie, S., Tacconi, L., et al. 1995, *ApJS*, **98**, 219