

## OPTICAL AND NEAR-INFRARED MONITORING OF THE BLACK HOLE X-RAY BINARY GX 339-4 DURING 2002–2010

MICHELLE M. BUXTON<sup>1</sup>, CHARLES D. BAILYN<sup>1</sup>, HOLLY L. CAPELO<sup>1</sup>, RITABAN CHATTERJEE<sup>1</sup>, TOLGA DINÇER<sup>2</sup>,  
EMRAH KALEMCI<sup>2</sup>, AND JOHN A. TOMSICK<sup>3</sup>

<sup>1</sup> Astronomy Department, Yale University, P.O. Box 208101, New Haven, CT 06520-8101, USA; [michelle.buxton@yale.edu](mailto:michelle.buxton@yale.edu)

<sup>2</sup> Faculty of Engineering and Natural Sciences, Sabanci University, Orhanli-Tuzla, Istanbul, 34956, Turkey

<sup>3</sup> Space Sciences Laboratory, 7 Gauss Way, University of California, Berkeley, CA 94720-7450, USA

Received 2011 June 2; accepted 2012 March 21; published 2012 April 30

### ABSTRACT

We present the optical/infrared (O/IR) light curve of the black hole X-ray binary GX 339-4 collected at the SMARTS 1.3 m telescope from 2002 to 2010. During this time the source has undergone numerous state transitions including hard-to-soft state transitions when we see large changes in the near-IR flux accompanied by modest changes in optical flux, and three rebrightening events in 2003, 2005, and 2007 after GX 339-4 transitioned from the soft state to the hard. All but one outburst show similar behavior in the X-ray hardness–intensity diagram. We show that the O/IR colors follow two distinct tracks that reflect either the hard or soft X-ray state of the source. Thus, either of these two X-ray states can be inferred from O/IR observations alone. From these correlations we have constructed spectral energy distributions of the soft and hard states. During the hard state, the near-IR data have the same spectral slope as simultaneous radio data when GX 339-4 was in a bright optical state, implying that the near-IR is dominated by a non-thermal source, most likely originating from jets. Non-thermal emission dominates the near-IR bands during the hard state at all but the faintest optical states, and the fraction of non-thermal emission increases with increasing optical brightness. The spectral slope of the optical bands indicate that a heated thermal source is present during both the soft and hard X-ray states, even when GX 339-4 is at its faintest optical state. We have conducted a timing analysis of the light curve for the hard and soft states and find no evidence of a characteristic timescale within the range of 4–230 days.

**Key words:** binaries: close – black hole physics – infrared: stars – radiation mechanisms: non-thermal – radiation mechanisms: thermal – stars: individual (GX 339-4)

*Online-only material:* machine-readable and VO tables

### 1. INTRODUCTION

Observations of X-ray emitting binary stars provide clear evidence for the presence of accreting black holes in some of these systems since dynamical measurements of the mass of the accreting compact object are greater than the maximum mass of a neutron star (Remillard & McClintock 2006, and references therein). Around 20 black hole X-ray binaries (BHXBs) have been discovered in our Galaxy so far. Observations of these objects are seen to have variable emission at all wavelengths due to changes in the mass accretion rate, the appearance/disappearance of a jet, and variations in the jet emission strength.

GX 339-4 is unusual among BHXBs in that it has not been observed to go into an optical/infrared (O/IR) “quiescent” state during which the flux from the companion star dominates over the flux from the accretion flow. Observations of the optical counterpart during its faintest optical and X-ray state (Shahbaz et al. 2001) do not show absorption lines in the optical spectrum, and identification of the companion star has remained elusive. This has complicated efforts to determine the mass and binary parameters of the system (e.g., Buxton & Vennes 2003). However, observations of emission features associated with the irradiated companion star and accretion disk were successful in determining the orbital period and mass function of the source (Hynes et al. 2003) so it is clear that this source does contain a black hole.

While the lack of a quiescent state has complicated studies of the binary parameters of GX 339-4, its continuous accretion

has made it a key source for studying accretion phenomena. To do so requires simultaneous multiwavelength data that cover the spectral energy distribution (SED) as broadly as possible. The optical and near-infrared spectral region is particularly important in GX 339-4 (Corbel & Fender 2002; Russell et al. 2006; Homan et al. 2005; Coriat et al. 2009) as it appears to be the location of a cross-over between a non-thermal and thermal dominated spectrum. This is also true for other BHXBs including XTE J1550-564 (Jain et al. 2001; Corbel et al. 2002; Russell et al. 2010, 2011; Chaty et al. 2011), XTE J1118+480 (Hynes et al. 2006; Brocksopp et al. 2010), and 4U 1543-47 (Buxton & Bailyn 2004).

During the soft state of GX 339-4, the spectral slope of the O/IR emission is positive suggesting that its origin is thermal in nature. The O/IR spectrum in BHXBs during this state is expected to be dominated by a multicolor blackbody representing the accretion disk. Such a spectrum consists of a Rayleigh–Jeans (RJ) tail ( $\alpha = 2$ , where  $F_\nu \propto \nu^\alpha$ ), a flattened profile ( $\alpha \sim 1/3$  for a viscous heated disk), followed by the Wein tail. To discern the temperature of the thermal source one needs to observe the turnover to the Wein tail. This turnover has not been directly observed in GX 339-4 but simultaneous O/IR and UV observations of GX 339-4 (Cadolle Bel et al. 2011) show the flux increases from the infrared to the UV. Studies of other BHXBs (Hynes et al. 2002; Hynes 2005; Zurita Heras et al. 2011) have revealed that the broadband SED increases from optical to UV wavelengths and, in some cases, seen to peak in the UV. However, the UV flux determination is sensitive to the reddening estimate which can be fraught with difficulties

(Fitzpatrick 1999) placing large errors on the peak location. The optical spectral slope in many BHXBs during X-ray outbursts has been observed to be  $0.5 \lesssim \alpha \lesssim 1.5$  (Hynes 2005). However, the optical spectra were insufficient to determine whether the disk flux arose from irradiation from an X-ray source (central or vertically extended) or viscous heating in the outer disk. For this one needs simultaneous UV data. Not surprisingly, therefore, there is conflicting evidence as to whether the disk in GX 339-4 is irradiated or not during X-ray outbursts (e.g., Hynes et al. 2003; Homan et al. 2005; Markoff et al. 2005; Maitra et al. 2009; Cadolle Bel et al. 2011).

In the hard state, the near-infrared spectral slope in GX 339-4 differs significantly from the optical and often (though not always; Coriat et al. 2009) lines up with the radio spectrum (Corbel & Fender 2002; Homan et al. 2005; Russell et al. 2006; Coriat et al. 2009) indicating that the majority of near-infrared emission during the hard state may be non-thermal emission from a jet (Fender 2001; Fender et al. 2004, 2005). The location of the non-thermal power-law break is an important parameter as it is used to estimate the jet power (Fender 2006). Motch et al. (1985) first showed that, during the hard state, the IR to X-ray SED was well explained by a single power-law fit with a slope of  $\alpha = -0.58$ . Subsequently, Corbel & Fender (2002) constructed two SEDs with quasi-simultaneous radio, O/IR, and X-ray data and suggested that the power law breaks in the near-IR. Nowak et al. (2005) found that, using 10 simultaneous radio/X-ray hard-state observations of GX 339-4, the hard-state SED could be fit with a doubly broken power law that breaks in the IR, and that the position of the break changes with X-ray flux. Recent studies are now showing this to be the case. Using simultaneous radio and SMARTS O/IR data taken in 2010, Coriat et al. (2009) found that the radio-to-IR power-law break was located at frequencies higher than the *H* band when GX 339-4 was in the hard state. However, when GX 339-4 was transitioning from the soft to hard state, the break had to be located at frequencies lower than *H* band as the O/IR data fluxes were well below that expected from the extrapolated radio spectrum. Gandhi et al. (2011) obtained mid-IR (*WISE*) with quasi-simultaneous UV (*Swift*), optical (Faulkes Telescope South), near-IR (Rapid Eye Mount Telescope), and radio (ATCA) data, and found that during the hard state jet emission most likely dominated in the mid-IR and the power-law break was also located in this spectral region (contrary to Coriat et al. 2009).

The hard-state optical spectrum typically remains thermal in its origin and is most likely a viscously heated accretion disk, an irradiated accretion disk and/or companion star, or a combination of these.

Timing studies are valuable tools in determining the nature of emission during the soft and hard X-ray states. Very little has been done during the soft state in GX 339-4. Motch et al. (1985) found no sign of variability in the power-density spectrum (PSD) of soft-state optical data. Quasi-periodic oscillations (QPOs) ranging between 0.05 and 1 Hz have been observed in the PSD of hard-state data (Motch et al. 1985; Gandhi 2009; Gandhi et al. 2010) that may be attributed to oscillations within the accretion disk. Cross-correlation and autocorrelation functions obtained from hard-state data show that optical emission lags X-ray emission by  $\sim 150$  ms (Gandhi et al. 2008) while the IR lags X-rays by  $\sim 100$  ms (Casella et al. 2010). These timescales are much too short to be explained by reprocessing of X-rays by the outer disk or companion star ( $\sim 25$  s; Gandhi et al. 2008) and suggest the dominant origin of hard-state O/IR emission is much closer to the black hole, possibly the base of the jet and/or corona.

O/IR data taken with the ANDICAM camera on SMARTS have proven to be a valuable resource for multiwavelength studies of GX 339-4 (Homan et al. 2005; Tomsick et al. 2008; Coriat et al. 2009; Cadolle Bel et al. 2011; T. Dinçer et al., submitted) and other X-ray binaries (XRBs) (Buxton & Bailyn 2004; Kalemci et al. 2005; Russell et al. 2006; Migliari et al. 2007; Orosz et al. 2009; Corbet et al. 2010; Rawls et al. 2011).

Using ANDICAM data of GX 339-4 Homan et al. (2005) found strong correlations between X-ray and O/IR fluxes that differed between the hard and soft states, indicating that the dominant flux source differed in each case. The power-law slope of the near-IR/X-ray correlation during the hard state was very similar to that observed for the radio/X-ray correlation, suggesting that the majority of near-IR emission was from a jet, although other components most likely contributed to the overall O/IR flux as well. During the soft state, Homan et al. (2005) showed a 15–20 day lag in variations between the X-ray and *H*-band fluxes, with the *H* band leading the X-ray. This time difference is consistent with a viscous timescale and strongly suggests that the O/IR emission during the soft state originates from an accretion disk. However, since the ratio of X-ray to O/IR flux during the soft state was only a factor of 10 higher than during the hard state, it was thought the disk was either moderately heated or not heated at all.

Coriat et al. (2009) also used ANDICAM O/IR data of GX 339-4 to discover tight correlations between the X-ray and O/IR fluxes with branches that corresponded to the soft, intermediate, and hard X-ray states. Comparison between the IR/X-ray and optical/X-ray correlations suggested that the near-IR fluxes are dominated by non-thermal emission while the optical is dominated by thermal emission in both hard and soft X-ray states.

Homan et al. (2005), Coriat et al. (2009), and other studies have used only part of our O/IR data set of GX 339-4. In this paper, we present the entire O/IR light curve of GX 339-4 from 2002–2010, inclusive, with the intent on making it public and available to the research community. We have also analyzed the O/IR fluxes and SED to: (1) identify correlations between the near-IR and optical fluxes that are dependent upon X-ray state, such as that seen by Homan et al. (2005) and Coriat et al. (2009); (2) place limits on the SED power-law break in the near-IR during the hard state; (3) investigate the nature of the flux sources during both the soft and hard X-ray states; and (4) perform a timing analysis of the O/IR data to identify any characteristic timescales that may be present. In Section 2, we describe our data reduction and photometric calibration methods, and present the O/IR light curve of GX 339-4 and an X-ray hardness–intensity diagram (HID). In Section 3, we distinguish two different patterns of O/IR behavior that are associated with the soft and hard X-ray states. In Section 4, we study the O/IR SEDs and compare them to phenomenological models representing thermal and non-thermal emission. In Section 5, we investigate the variability timescales in the O/IR data during both soft and hard X-ray states. We discuss our results in the context of other studies of GX 339-4, and give conclusions, in Section 6.

## 2. OBSERVATIONS AND DATA ANALYSIS

### 2.1. Optical and Near-infrared

O/IR observations of GX 339-4 were taken with the ANDICAM<sup>4</sup> camera (Depoy et al. 2003) on the SMARTS 1.3 m

<sup>4</sup> <http://www.ctio.noao.edu/noao/content/andicam>

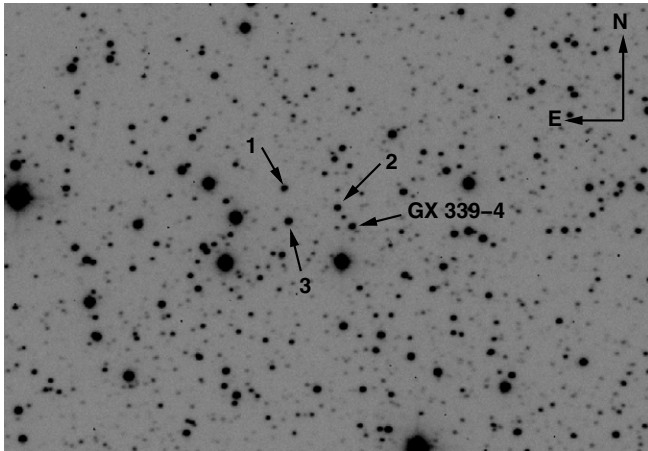


Figure 1. V-band finding chart for GX 339-4. Field of view is  $3'.7 \times 2'.7$ .

Table 1  
Optical Comparison Star Magnitudes

Number	R.A. (J2000.0)	Decl. (J2000.0)	V (mag)	I (mag)	(V-I) (mag)
1	17:02:52.0	-48:47:09.5	$17.54 \pm 0.06$	$15.26 \pm 0.07$	2.28
2	17:02:49.9	-48:47:17.1	$17.43 \pm 0.05$	$15.49 \pm 0.07$	1.94
3	17:02:51.8	-48:47:21.8	$16.99 \pm 0.05$	$15.62 \pm 0.06$	1.37

**Notes.** Errors are  $1\sigma$ . Star numbers are in accordance with the optical finding chart (Figure 1).

telescope (Subasavage et al. 2010). ANDICAM is a dual-channel imager that contains a movable internal mirror in the IR channel that allows dithered images to be taken while a single optical exposure is undertaken. We obtained pairs of images in V+J and I+H filters on a daily or near-daily basis whenever GX 339-4 was available in the night sky. The optical images were single exposures of 300 s. The IR images contained eight dithered images of 30 s each. The optical data were bias- and overscan-subtracted, and flat-fielded using the CCDPROC task in IRAF. Infrared data were reduced using in-house IRAF scripts that flat-fielded, sky-subtracted, and combined dithered images.

#### 2.1.1. Magnitude Determination and Calibration

Uncalibrated O/IR magnitudes were determined using DAOPHOT in IRAF, for which the full width at half-maximum, sky background and point-spread function (PSF) parameters were determined separately for every image.

Optical primary standard stars (Landolt 1992) were used to calibrate the optical magnitudes of three comparison stars in the field of GX 339-4. For 210 photometric nights we calculated the calibrated magnitude of each comparison star using photometric zero points that were measured from the SMARTS observations of the primary standard stars for each filter, correcting for atmospheric extinction derived from the standard star observations. The average magnitude of these three comparison stars was then used as a basis for differential photometry with respect to GX 339-4 for all observations. The near-infrared photometry was calibrated using near-infrared primary standard data (Persson et al. 1998) and two comparison stars were used as secondary standards. Only 21 nights of photometric data were used to measure the calibrated magnitudes of the secondary standards as we had limited data on the near-infrared photometric zero points.

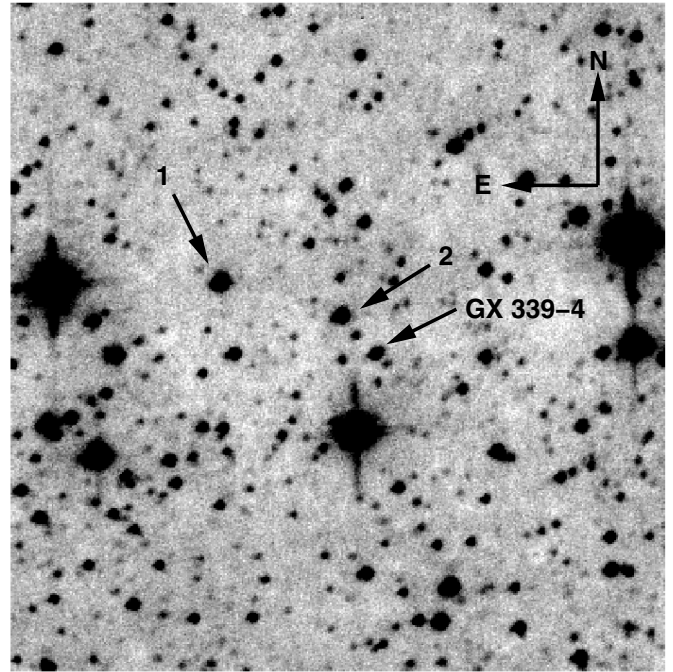


Figure 2. H-band finding chart for GX 339-4, field size is  $2'.4 \times 2'.4$ .

Table 2  
Near-infrared Comparison Star Magnitudes

Number	R.A. (J2000.0)	Decl. (J2000.0)	J (mag)	H (mag)
1	17:02:52.0	-48:47:09.5	$13.35 \pm 0.09$	$12.49 \pm 0.09$
2	17:02:49.9	-48:47:17.1	$13.88 \pm 0.09$	$13.02 \pm 0.10$

**Notes.** Errors are  $1\sigma$ . Star numbers are in accordance with the IR finding chart (Figure 2). Our magnitudes are consistent with the 2MASS catalog within our photometric errors.

We show the comparison stars in the optical and near-infrared finding charts shown in Figures 1 and 2. Our calibrated magnitudes of these comparison stars are given in Tables 1 and 2. We also present the O/IR magnitudes of GX 339-4 in Table 3, the full version of which can be accessed online.

#### 2.1.2. Color Correction

The  $(V-I)$  colors of our secondary standards are given in Table 1, and they range from 1.37 to 2.28. For GX 339-4, the majority of  $(V-I)$  data vary over the X-ray states between 0.9 and 2.0. The secondary standard colors overlap most of the  $(V-I)$  color range exhibited by GX 339-4. We calculated the mean color-term coefficient for the I band for 1052 photometric nights between 2003 August and 2010 December to be  $0.062 \pm 0.048$  ( $1\sigma$ ). Therefore, using the average color-term correction for the I band, the color-term correction for the secondary stars ranges between 0.085 and 0.141 mag.

Color correction in the near-infrared is minimal and, as such, is not required.

#### 2.1.3. Photometric Errors

Errors on the V- and I-band differential photometry were obtained by calculating the  $1\sigma$  error of 93 stars from 40 nights of data obtained during 2006. Results that deviated more than  $\pm 3\sigma$  from the mean were rejected, and the mean and  $\sigma$  were recalculated until no more rejections were made. The  $1\sigma$  error

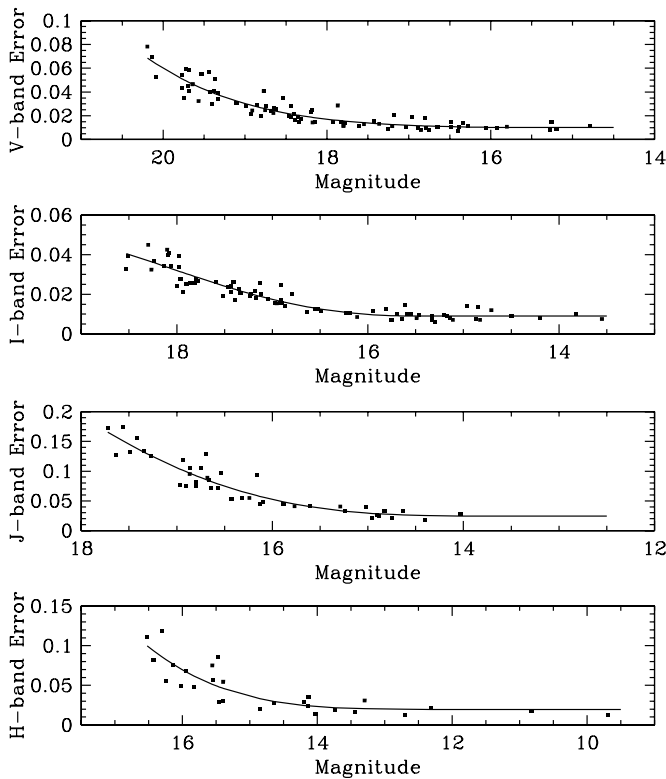


**Table 3**  
Calibrated  $V$ -,  $I$ -,  $J$ -, and  $H$ -band Magnitudes, Fluxes and Their Errors of GX 339-4 from 2002–2010, Inclusive (Abbreviated)

Year	JD (-2450000.0)	$V$ mag	$V$ err (mag)	$V_0$ flux (Jy)	$V_0$ err (Jy)	$I$ mag	$I$ err (mag)	$I_0$ flux (Jy)	$I_0$ err (Jy)	$J$ mag	$J$ err (mag)	$J_0$ flux (Jy)	$J_0$ err (Jy)	$H$ mag	$H$ err (mag)	$H_0$ flux (Jy)	$H_0$ err (Jy)
2002	2297.85400	...	...	...	...	17.730	0.030	0.00103	0.00010	...	...	...	...	16.080	0.070	0.00069	0.00007
	2298.87070	...	...	...	...	...	...	...	...	...	...	...	...	16.640	0.110	0.00041	0.00004
	2314.84330	...	...	...	...	18.280	0.040	0.00062	0.00006	...	...	...	...	16.360	0.090	0.00053	0.00005
	2314.84830	...	...	...	...	...	...	...	...	...	...	...	...	16.340	0.090	0.00054	0.00005
	2316.83520	...	...	...	...	...	...	...	...	...	...	...	...	16.480	0.100	0.00048	0.00005
	2317.84150	...	...	...	...	17.840	0.030	0.00093	0.00009	...	...	...	...	16.470	0.100	0.00048	0.00005
	2318.81040	...	...	...	...	17.630	0.030	0.00112	0.00011	...	...	...	...	15.830	0.060	0.00087	0.00008
	2319.85140	...	...	...	...	17.570	0.030	0.00119	0.00011	...	...	...	...	16.210	0.080	0.00061	0.00006
	2320.83940	...	...	...	...	17.600	0.030	0.00116	0.00011	...	...	...	...	16.090	0.070	0.00068	0.00007
	2322.86770	...	...	...	...	17.440	0.020	0.00134	0.00013	...	...	...	...	15.710	0.060	0.00097	0.00009

**Notes.** The JD is that at the start of the observing sequence.

(This table is available in its entirety in machine-readable and Virtual Observatory (VO) forms in the online journal. A portion is shown here for guidance regarding its form and content.)



**Figure 3.** Photometric error of stars in the GX 339-4 field vs. magnitude for optical and near-infrared bands. The solid line is a fourth-order polynomial fit. The y-axis is the  $1\sigma$  dispersion of measurements of stars as described in Section 2.1.3.

for each star was plotted against their calibrated magnitude and a fourth-order polynomial was fitted to the resulting distribution. Again we rejected any data that deviated more than  $\pm 3\sigma$  from the polynomial and recalculated the polynomial fit until no more rejections were made. The same procedure was performed for the IR data, using 44 stars for the  $J$  band and 29 stars for the  $H$  band, from 40 nights in 2006. We used fewer stars than the optical bands because the field of view is smaller and there are fewer stars to choose from.

Figure 3 shows  $1\sigma$  errors versus magnitude for the O/IR and the corresponding polynomial fits. Once the polynomial reached a minimum, we extended that constant numerical value to brighter magnitudes. Thus the optical photometric errors are

0.01 mag for  $V \leq 17.50$  and  $I \leq 16.50$ . Infrared photometric errors are 0.02 mag for  $J \leq 14.10$  and  $H \leq 14.10$ . We refer the reader to Figure 3 to ascertain errors on fainter magnitudes.

We also measured the error in calibrating the secondary star magnitudes by calculating the standard error of the mean over the number of photometric nights mentioned above. The photometric calibration errors are as follows:  $V_{\text{err}} = 0.003$  mag,  $I_{\text{err}} = 0.004$  mag,  $J_{\text{err}} = 0.02$  mag, and  $H_{\text{err}} = 0.02$  mag. These values do not account for systematic errors associated with such effects as the difference in effective filter responses between SMARTS and the standard system. Such systematics are likely to contribute a few hundredths of a magnitude of calibration error. Therefore we take the optical calibration errors to be  $\approx 0.02$  mag and the IR calibration errors to be  $\approx 0.03$  mag.

We note that in the majority of images the two nearby stars to GX 339-4 (denoted as “A” and “B” in Shahbaz et al. 2001) contribute negligibly to the overall flux of GX 339-4 during its faintest optical state as DAOPHOT is able to extract the PSF profiles of both GX 339-4 and stars “A” and “B” (the latter two are combined into one PSF profile). However, there are cases where the seeing or the image quality are degraded such that DAOPHOT was not able to separate the PSF profile of GX 339-4 from the two nearby stars. For completion, we have included these data in Table 3 but have denoted it with an asterisk.

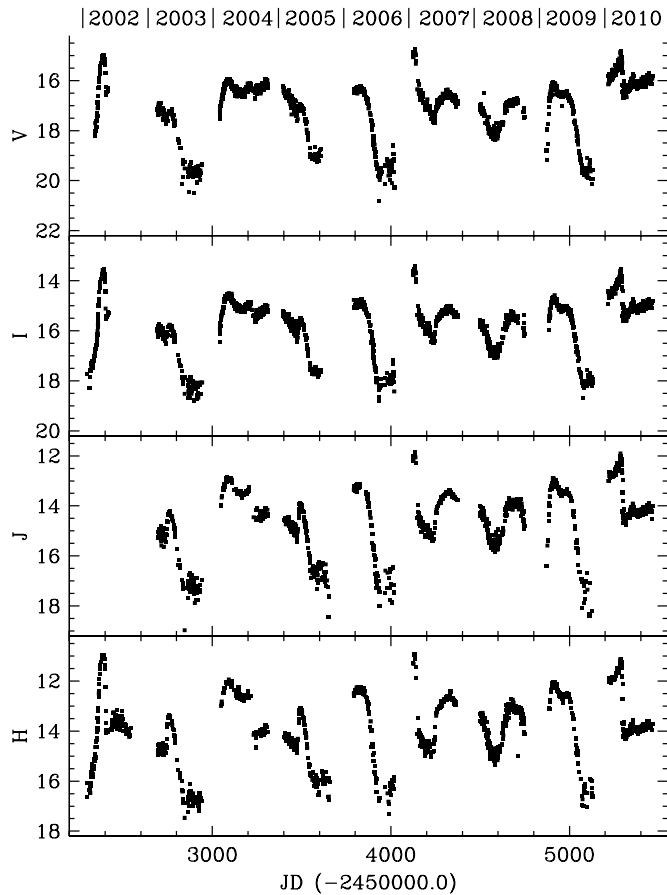
## 2.2. X-Ray Data

The X-ray data from proportional counter array (PCA) on board the *Rossi X-Ray Timing Explorer (RXTE)* were reduced using HEASOFT V6.7. After the standard data screening, the background-corrected count rates were extracted from proportional counter unit 2 in three energy bands corresponding to 2.8–5.2 keV, 5.2–9.8 keV, 9.8–25 keV.

## 2.3. O/IR Light Curve

In Figure 4 we present the O/IR light curve of GX 339-4 during 2002–2010, inclusive. Gaps in the data occur when the source is behind the Sun.

There are a number of interesting features of this light curve. GX 339-4 clearly does not follow the pattern of long periods of quiescence punctuated by outbursts with a fast-rise, exponential-decay morphology as is often seen in dwarf novae (e.g., Cannizzo & Mattei 1998) and neutron-star X-ray binaries, such as Aql X-1 (Maitra & Bailyn 2008) and many black hole binaries (Chen et al. 1997). Rather, the source is continually



**Figure 4.** The SMARTS 1.3 m optical and near-infrared light curve of GX 339-4 during 2002–2010, inclusive.

active with strong variability, featuring rapid rises with a large range of decay times.

In many cases, the changes seen in the optical bands have smaller amplitudes than those that occur at the same time in the near-infrared bands. Obvious examples occur in 2003 and 2005 during the rebrightening phases, discussed in Section 2.3.1. During these events an increase in flux is barely noticeable in the *V* or *I* bands, but is more obvious in the *J* and *H* bands. There are also examples of sudden drops in IR flux (e.g., mid 2002, mid 2004, and early 2010) which are accompanied by more modest changes in the optical (Bailyn & Ferrara 2004). These drops occur when the source transitions from the hard state into the soft state. This behavior is contrary to what is expected if the O/IR flux originates solely from a thermal source, such as an accretion disk. Disk instabilities (Cannizzo et al. 1995; Lasota 2001) and irradiation models (Dubus et al. 1999, 2001) generally attribute variability to changes in temperature of the accretion disk. In such cases, high luminosity should be correlated with blue color. However, this basic relationship clearly does not hold for GX 339-4, which suggests that a non-thermal emission component is often dominant. It is, therefore, desirable to study the O/IR SED to ascertain what flux sources are present and how they vary and contribute to the overall flux during these changes in the light curve. We present our O/IR SEDs in Sections 4.2 and 4.3.

### 2.3.1. Rebrightening Events

During 2003 and 2005, GX 339-4 displayed a slowly fading decay interrupted by a rebrightening which subsequently

**Table 4**  
Slopes of Best-fit Lines to 2003 and 2005 Light Curves (see Figure 5)  
Immediately before the Rebrightening Events

Year	<i>V</i> (mag day <sup>-1</sup> )	<i>I</i> (mag day <sup>-1</sup> )	<i>J</i> (mag day <sup>-1</sup> )	<i>H</i> (mag day <sup>-1</sup> )
2003	0.010 ± 0.002	0.008 ± 0.002	0.007 ± 0.003	0.003 ± 0.002
2005	0.012 ± 0.001	0.010 ± 0.001	0.009 ± 0.001	0.007 ± 0.001

**Note.** Errors stated are  $1\sigma$ .

declined back, but not to the extrapolation of the previous decay. In Figure 5 we show these rebrightening events along with our best-fit straight lines to the data immediately before the rebrightening. The slopes of our fits are given in Table 4. Within errors, the O/IR decayed at the same rate between 2003 and 2005 with the exception of the *H* band for which the decay rate had slightly increased. We extended the best-fit line in Figure 5 to highlight that the decay rate after the rebrightening event is not a continuation of that before, but rather the O/IR flux continues to fade to a fainter, steady magnitude.

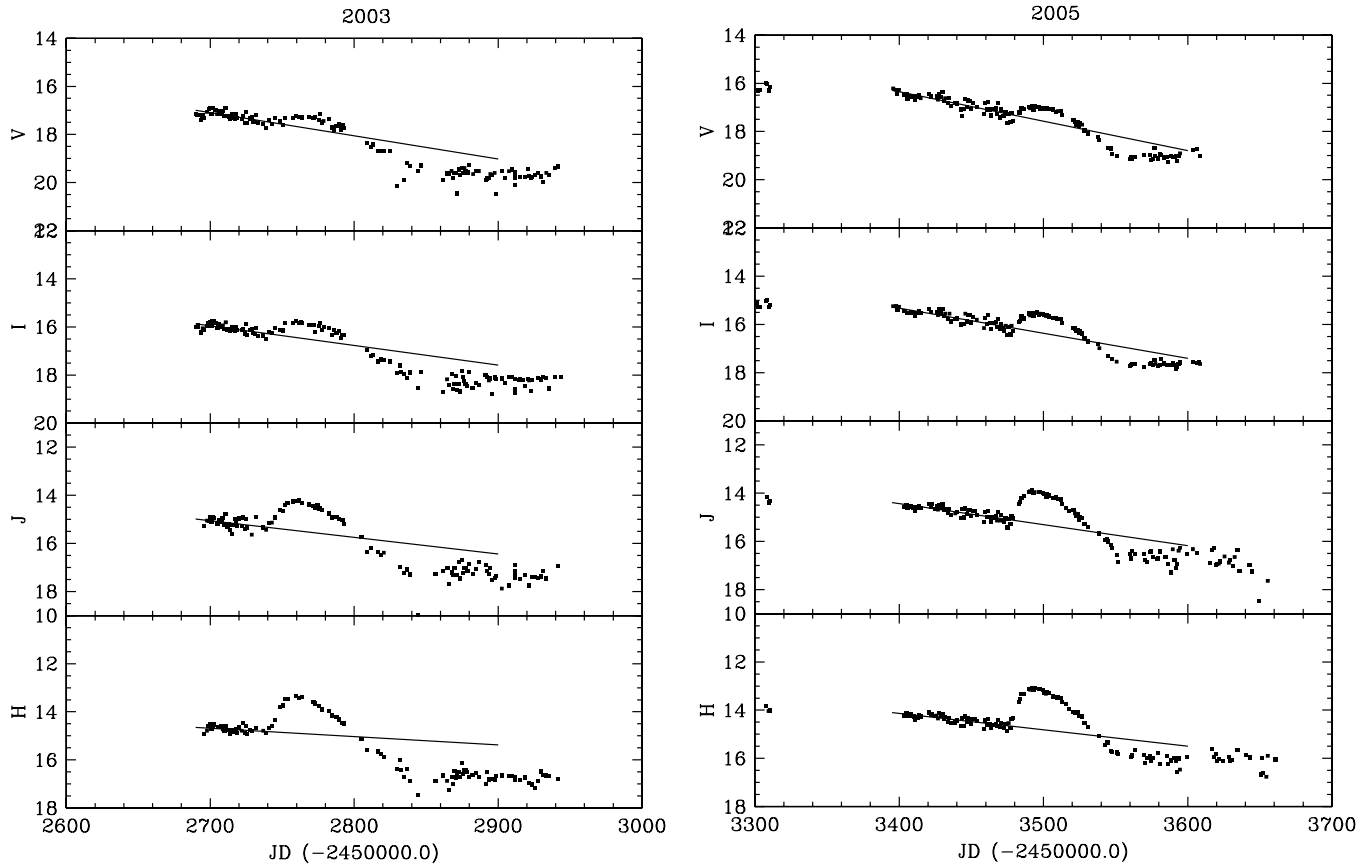
The duration of the rebrightening event in 2003 ( $\sim 100$  days) is longer than in 2005 ( $\sim 80$  days), and the magnitude reached after the rebrightening event ended is slightly brighter in 2005 than in 2003 by  $\sim 0.5$  mag. This could mean that more material was accreted by the black hole and/or ejected via collimated jets in 2003 than in 2005.

In 2007, GX 339-4 once again transitioned from the soft state to the hard state and experienced a rebrightening in O/IR fluxes. However, the behavior after the rebrightening was markedly different to that in 2003 and 2005. GX 339-4 did not fade back to a quiescent magnitude but remained in the hard state during 2008 until the end of 2009, fluctuating significantly in O/IR flux during that time. It is unclear why this should be the case.

With observations of future outbursts in GX 339-4 we will explore further the similarities and differences between these rebrightening events and how they relate to the overall outburst properties. In addition, the decomposition of disk/jet flux during these events will be pursued in a future paper (also see T. Dinçer et al., submitted).

### 2.3.2. Hardness–Intensity Diagram

A useful tool in discerning when BHXBs are in various states is the HID (Miyamoto et al. 1995) where X-ray hardness is plotted against the count rate. Nearly all black hole transients trace a “q-shaped” path counterclockwise in this diagram (Belloni 2010). One exception is 4U 1630-47 (Tomsick et al. 2005) during its 2002–2004 outburst (although it did exhibit the q-shaped pattern in 1998). In Figure 6 we show the HID of GX 339-4 for 2002 through 2010. HIDs of the 2002/2003, 2004/2005, and 2007 outbursts have already been published in Belloni et al. (2005), Homan & Belloni (2005), and Belloni (2010). The 2008/2009 data are an extension of the outburst started in 2007. The 2006 and 2007–2009 outbursts are interesting for the following reasons. In 2006, GX 339-4 experienced an outburst relatively short compared to the others and that never left the hard state. In the HID we see this outburst only resides in the lower vertical branch of the “q” and never resides in the loop. However, we see in Figure 4 that the O/IR flux did increase significantly but did not peak at the same fluxes as in 2002, 2004, 2007, and 2010. As already noted, the 2007–2009 outburst remained in the hard state for a very long time after transitioning from the soft state, and in the O/IR we see it fluctuating



**Figure 5.** O/IR light curves of GX 339-4 during 2003 and 2005, highlighting the rebrightening events. The solid line is a best-fit line to the data immediately before the rise of the rebrightening event. The slopes of these lines are given in Table 4.

significantly during this time. The HID for this outburst does not show any obvious differences to those of other outbursts. The only difference being the amount of time it has spent on the lower horizontal branch, also known as the hard-intermediate state Belloni (2010). The 2010 outburst looks to be typical of other outbursts in the HID.

### 3. O/IR STATES IN GX 339-4

#### 3.1. O/IR Correlations

Coriat et al. (2009) described correlations between the X-ray and  $V$ - and  $H$ -band fluxes in GX 339-4 in which a clear delineation of data is seen between the hard, soft, and intermediate X-ray states. Here we investigate correlations within the O/IR and show how this relates to the X-ray behavior.

In Figure 7 we plot the  $V$ -band magnitudes against  $I$ -,  $J$ -, and  $H$ -band magnitudes. In each plot there are clearly two separate branches, and the separation between the two branches increase from the  $I$  to  $H$  band. The slope of the upper branch seems to change near the brighter end. To confirm this, we performed both single and broken power-law fits to each branch using the Levenberg–Marquardt algorithm. The best-fit parameter values are summarized in Table 5. We found the lower branch was best described by a single power law with a slope less than one, that is, GX 339-4 became bluer as the system became brighter. The slope of the lower branch decreased from the  $I$  to  $H$  band. The upper branch, on the other hand, was best fit by a broken power law. From the faintest magnitudes to the break, the slope is greater than one indicating that the system gets redder with increasing brightness. This slope increases from the  $I$  to  $H$  bands.

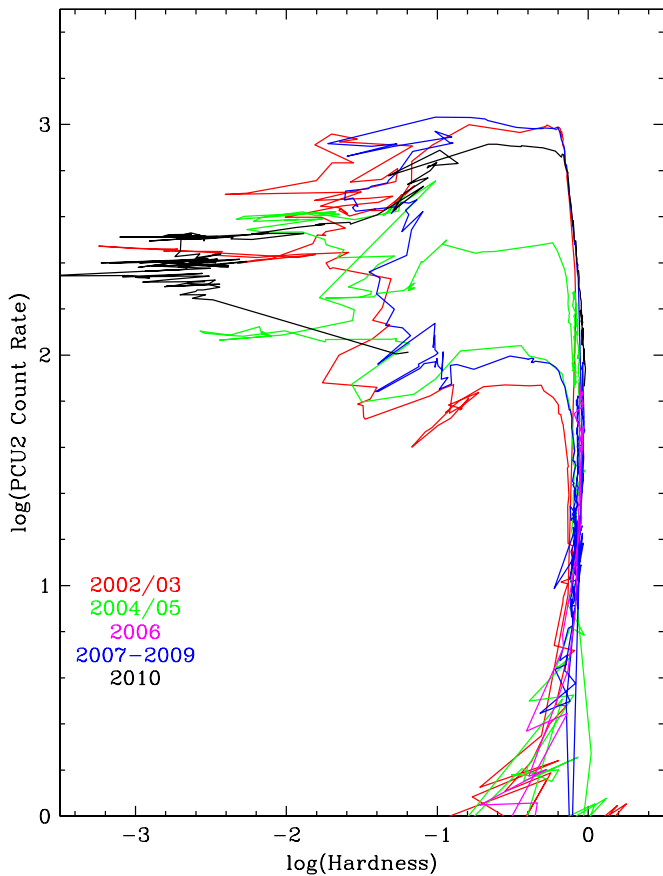
**Table 5**  
Power-law Fit Parameters to O/IR Correlations Shown in Figure 7

Data/Branch	$\alpha_1$	$\alpha_2$	$x_{\text{break}}$ (mag)	C (mag)
$V/I$ hard	$1.039 \pm 0.001$	$0.890 \pm 0.005$	$16.07 \pm 0.03$	$-2.06 \pm 0.02$
$V/J$ hard	$1.242 \pm 0.002$	$0.858 \pm 0.006$	$16.20 \pm 0.01$	$-7.04 \pm 0.04$
$V/H$ hard	$1.362 \pm 0.002$	$0.853 \pm 0.005$	$16.30 \pm 0.01$	$-9.89 \pm 0.04$
$V/I$ soft	$0.893 \pm 0.002$	n/a	n/a	$0.71 \pm 0.03$
$V/J$ soft	$0.796 \pm 0.004$	n/a	n/a	$1.41 \pm 0.06$
$V/H$ soft	$0.722 \pm 0.003$	n/a	n/a	$2.25 \pm 0.06$

**Notes.** Soft-state branch requires only a single power-law fit ( $F_y = C \cdot F_x^{\alpha_1}$ ). The hard-state branch requires a broken power law ( $F_y = C \cdot F_x^{\alpha_1}$  for  $x \leq x_{\text{break}}$ , and  $F_y = C \cdot F_x^{\alpha_1} \cdot F_{x(\text{break})}^{\alpha_2 - \alpha_1}$  for  $x > x_{\text{break}}$ ). Errors are  $1\sigma$ .

Beyond the break, the power-law slope is less than one, as in the case of the lower branch but with a higher slope in the  $J$  and  $H$  bands than that observed for the lower branch. The location of the break is statistically indistinguishable (within  $3\sigma$ ) between the  $V/J$  and  $V/H$  correlations, but is located at a slightly fainter magnitude in the  $V/I$  correlation.

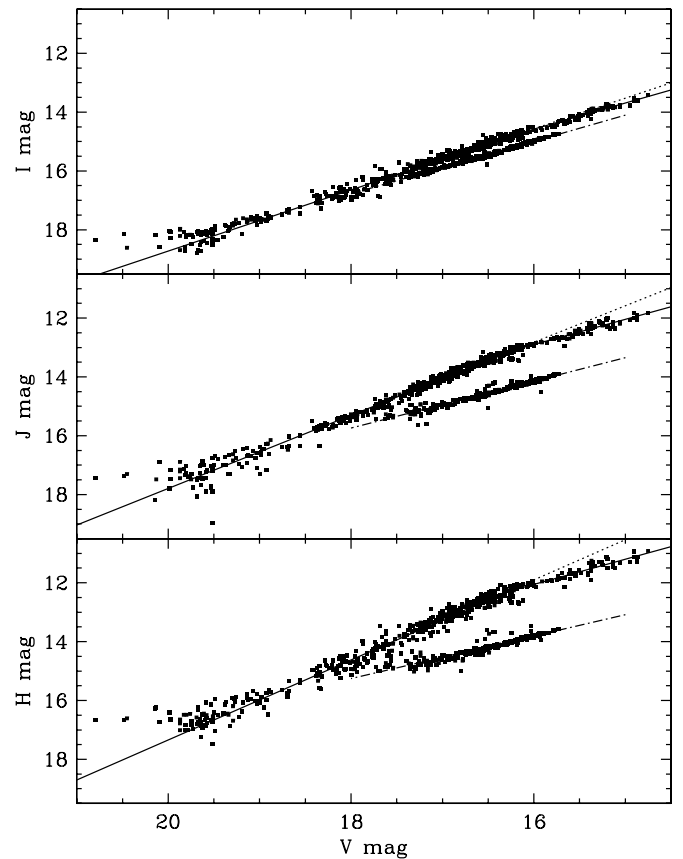
The color versus brightness trends suggest that, from the faintest optical state up to the break, the upper branches represent a state in which the O/IR is dominated by changes in non-thermal emission while at magnitudes brighter than the break, and in the lower branch, suggest changes in a thermal component is more dominant. Since it is regarded that non-thermal emission is from collimated jets, the O/IR flux during the hard state must contain components associated directly with the inner accretion



**Figure 6.** Hardness–intensity diagram of GX 339-4 for 2002–2010. Each separate outburst is shown in different colors.

flow in addition to whatever flux is produced directly by the outer accretion disk and the (much fainter) companion star. Maitra & Bailyn (2008) and Russell et al. (2011) presented analysis of the O/IR color–magnitude diagram for Aql X-1 and XTE J1550-564, respectively, and showed that the data could be well explained by a heated blackbody (representing the accretion disk) plus non-thermal jet emission during the hard state. These results support the above interpretation of an accretion disk dominating the soft state, and jet emission dominating the hard state. In a future paper we will present similar analysis of color–magnitude diagrams for GX 339-4.

Association between the correlation slopes and the jet/disk emission could already be inferred from the results of Coriat et al. (2009), who explored the relationships between O/IR flux and X-ray flux and ascertained that the upper branch corresponds to the “hard” X-ray state, and the lower branch to the “soft” state. We confirm the association between the O/IR upper and lower branches and the X-ray hard and soft state as follows. First, we defined the “soft” and “hard” X-ray states using the *RXTE* PCA hardness ratio (HR) data (where HR is the ratio of fluxes in the bands 9.8–25 keV)/(2.8–5.2 keV)). The entire GX 339-4 *RXTE* data set was analyzed to obtain count rates and HRs. The beginning and end of outbursts in the hard state were determined using the light curve and setting a threshold of 10 counts/s/PCU. Then we created spectra and power density spectra in the 3–25 keV band for all observations with good time intervals exceeding 1 ks while the count rate increased. We stopped the analysis when significant changes were observed either in the X-ray spectra or the power spectra indicating a transition to an intermediate state. For all these observations,

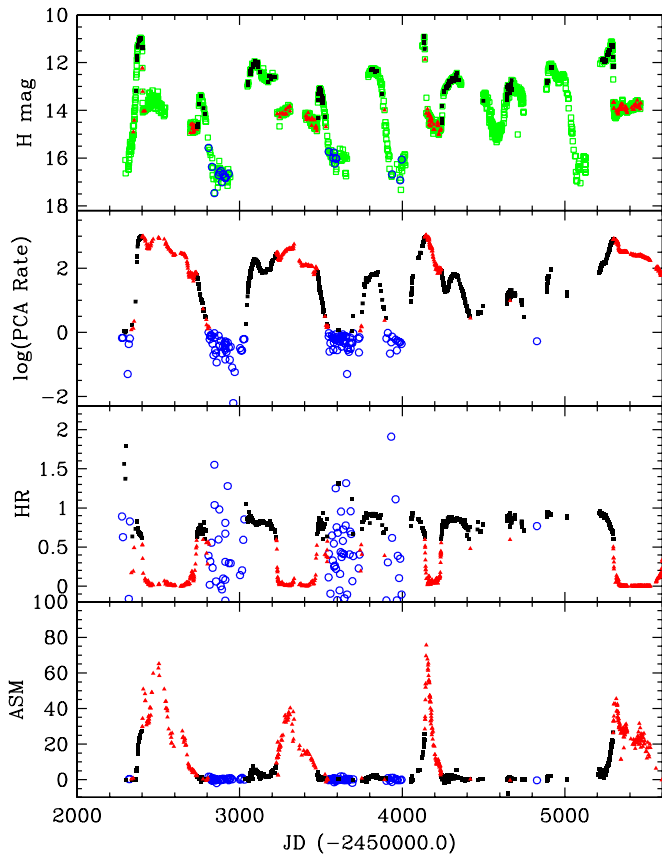


**Figure 7.** Correlations between the V-band and (top) *I*-, (middle) *J*-, and (bottom) *H*-band magnitudes. The solid line is a broken power-law fit to the upper branch; the dotted line shows an extension of the power law before the break highlighting the difference between a single and broken power-law fit; the dot-dashed line is a single power-law fit to the lower branch data. Best-fit parameters are given in Table 5.

the photon index was less than 1.75, and the power spectrum was dominated by broad Lorentzians with mean rms amplitudes greater than 25%. The HR threshold including all observations was 0.6, however, for some outbursts the threshold can go up to 0.75. When categorizing the O/IR into soft and hard states, we defined the soft state to be when  $HR < 0.6$ , and the hard state when  $HR \geq 0.6$ . Second, we considered data only for days when simultaneous *V*- and *H*-band data were taken, as this pair of data show the separate branches most clearly. Using these criteria, we plotted in Figures 8 and 9 red data points when the  $HR < 0.6$  (soft state), black points when  $HR \geq 0.6$  (hard state), and blue points when the X-ray state could not be determined due to low X-ray counts. We show all data as green points in Figures 8 and 9 for completeness. The analysis clearly shows that the lower (red) branch corresponds to when GX 339-4 is in a soft X-ray state, while the upper (black) branch corresponds to the hard X-ray state. This confirms that we are able to use O/IR data alone to determine when GX 339-4 is in either the hard or soft X-ray state.

### 3.2. State Transitions

Coriat et al. (2009) discussed how GX 339-4 moved along the IR/X-ray correlation branches over the course of four separate outbursts (2002/2003, 2004/2005, 2006, and 2007). In the following sections we trace the paths of the state transitions in the O/IR correlations and show the hard-to-soft transition in

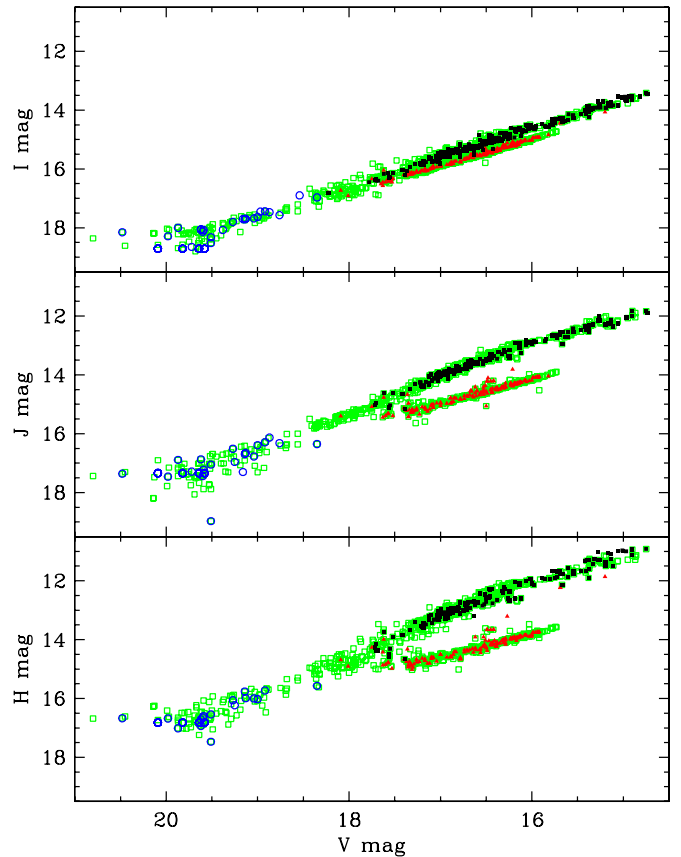


**Figure 8.** *H*-band light curve (top) and *RXTE* data. We categorized hard/soft-state *H*-band data only for days when we had simultaneous (i.e., same day) *RXTE* data, else the data are shown as green open squares. Black solid squares correspond to days when the hardness ratio is  $\geq 0.6$  (hard state) and red solid triangles when the hardness ratio is  $< 0.6$  (soft state). Data for which the PCA count rate is  $< 1.0$  counts  $s^{-1}$  were not categorized and are shown as blue open circles.

2010. We give a timescale over which the hard-to-soft transition occurs in 2002 and 2010.

### 3.2.1. Hard-to-soft Transition

In Figure 10 (left) we show the two best examples of transitions from the hard-to-soft X-ray states during 2002 (red line) and 2010 (green line). These are the two outbursts during when we had the best sampling over the hard-to-soft transition (i.e., at least one observation per day with no gaps between days over the transition period). When GX 339-4 begins a new outburst (that is from the faintest optical state) it is in the hard state at the lower end of the hard-state branch and rises up this branch to the brightest end. This corresponds to the far right vertical branch in the HID (Figure 6), also known as the low hard state Belloni (2010). Some time after GX 339-4 reaches its peak brightness it begins to transition to the soft state (the upper horizontal branch in the HID = hard-intermediate state). During this phase GX 339-4 rapidly fades, more in the IR than the optical. We note that Motch et al. (1985) was the first to see a change in optical brightness over the transition from hard to soft states. This sudden drop in O/IR flux during 2002 was also noted by Homan et al. (2005). In both 2002 and 2010 the path taken by GX 339-4 over this transition is remarkably similar. Once it has left the hard-state branch it takes around 4 days to reach the soft-state branch. Both cases merge with the soft branch at around the same location:  $V \sim 16.5$  mag. From our



**Figure 9.** Data are represented using the same criterion as Figure 8 and categorized into hard and soft states only for days when there were simultaneous *RXTE* data.

data, and as stated in Coriat et al. (2009), we can only say that the rise of GX 339-4 follows the same path as the decay phase (see Section 3.2.2) from a *V*-band magnitude of around 18.2. We do not have any data to state definitively that the rise and decay paths are the same below this magnitude.

### 3.2.2. Soft-to-hard Transition

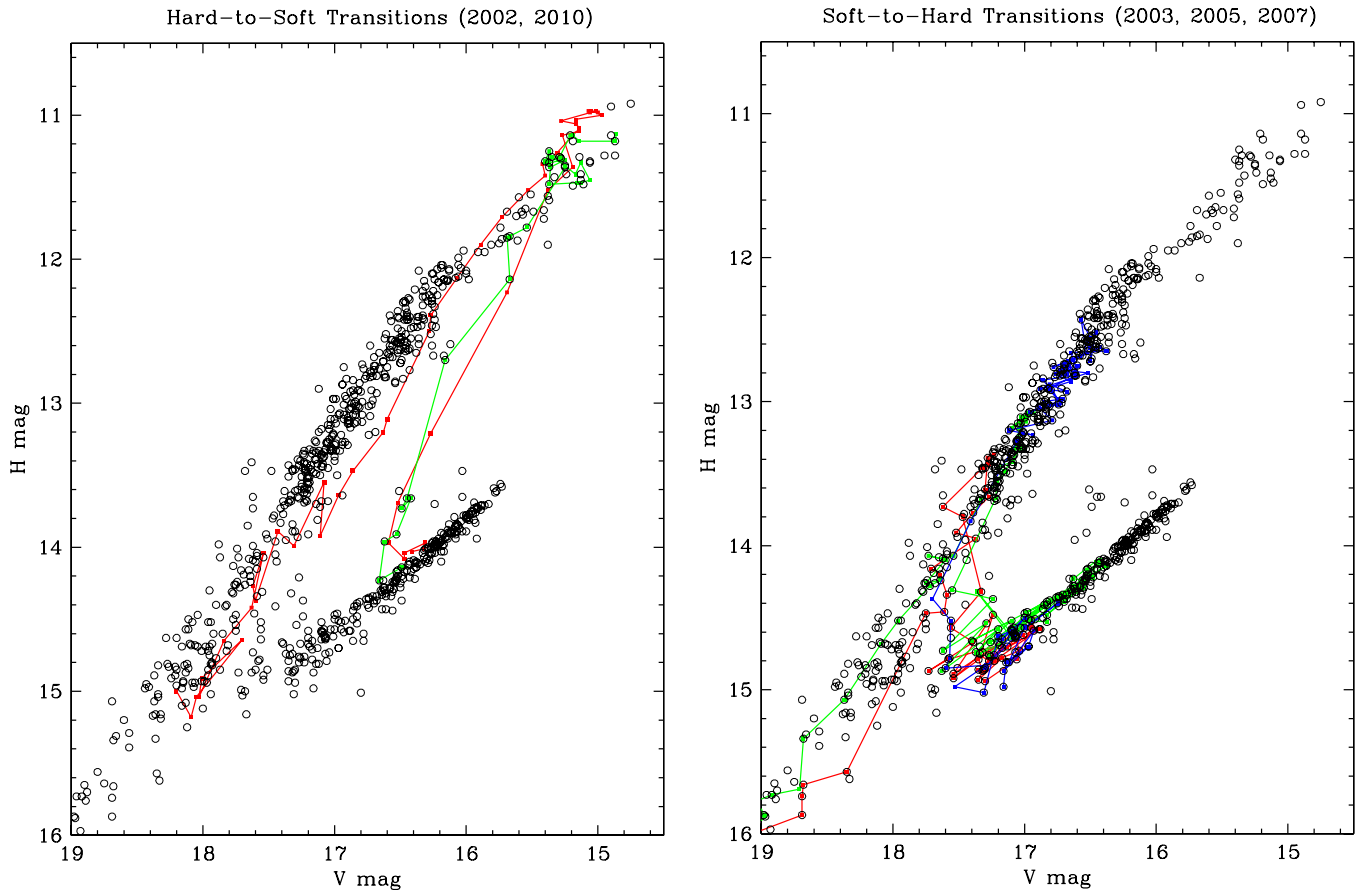
When GX 339-4 is in the soft X-ray state (the left vertical branch in the HID = high soft state) it is already at relatively bright O/IR fluxes. In Figure 10 (right) we show three examples (2003, 2005, 2007) of a soft-to-hard transition (corresponding to the bottom horizontal branch in the HID). During 2003 and 2005 the transition from soft-to-hard X-ray states followed the same path: GX 339-4 moves down the soft-state branch until it reaches the intersection between the soft- and hard-state branches. It then moves up the hard-state branch to a peak magnitude (slightly brighter in 2005 than 2003 by around 0.2 mag in *V*) and then swiftly down the hard-state branch to the faintest end. After transitioning into the soft state in 2007 GX 339-4 did not move down to the faintest end of the hard-state branch until 2009. Throughout this period GX 339-4 moved up and down the middle portion of the hard-state branch. Toward the end of 2009 it finally moved down the hard-state branch to the faintest end.

## 4. SPECTRAL ENERGY DISTRIBUTIONS

### 4.1. Determination of O/IR Flux

To obtain fluxes appropriate for comparing with observations in other wavelength regimes requires two steps. First, the





**Figure 10.** Evolution of soft-to-hard and hard-to-soft state transitions compared to the  $V/H$  correlation (open circles). Left: hard-to-soft transition: red line is 2002 data, green line is 2010 data. The soft-to-hard transition traces a unique path relative to the hard-to-soft transition. Right: soft-to-hard transition: red line is 2003 data, green line is 2005 data, and blue is 2007. In 2003 and 2005, GX 339-4 fades to the faintest end of the branch, but remains in the hard-state branch in 2007 (and 2008/2009).

magnitudes must be dereddened so that they are not affected by absorption along the line of sight; second, the dereddened magnitudes must be converted to flux units.

The O/IR magnitudes were dereddened using  $E(B - V) = 1.2 \pm 0.1$  (Zdziarski et al. 1998) that was converted to  $A_V = 3.7 \pm 0.3$  (Cardelli et al. 1989). We calculated the extinction coefficient in the other bands using  $A(\lambda)/A(V) = a(x) + b(x)/R_V$  and the relationships for  $a(x)$  and  $b(x)$  as given in O’Donnell (1994) for  $V$  and  $I$  bands, and Cardelli et al. (1989) for  $J$  and  $H$  bands. In calculating  $a(x)$  and  $b(x)$ , we used the effective wavelength for each band (Frogel et al. 1978; Elias et al. 1982; Bessell et al. 1998):  $V = 545$  nm,  $I = 798$  nm,  $J = 1250$  nm, and  $H = 1650$  nm. The errors on the dereddened magnitudes are dominated by the error in  $A_V$ , and are as follows:  $V_{\text{err}} = 0.3$  mag,  $I_{\text{err}} = 0.1$  mag,  $J_{\text{err}} = 0.1$  mag, and  $H_{\text{err}} = 0.1$  mag. Adding the photometric and interstellar reddening errors in quadrature give the following total errors on dereddened magnitudes:  $V_{\text{err}} = 0.30$  mag,  $I_{\text{err}} = 0.10$  mag,  $J_{\text{err}} = 0.10$  mag, and  $H_{\text{err}} = 0.10$  mag.

We note that Homan et al. (2005) found an independent value of  $E(B - V)$  using  $N_H = 5 \pm 1 \times 10^{21}$  atoms  $\text{cm}^{-2}$  (Kong et al. 2000), converting to  $E(B - V) = 0.94 \pm 0.19$  (Predehl & Schmitt 1995), in turn giving  $A_V = 2.9 \pm 0.6$  (Cardelli et al. 1989). Zdziarski et al. (1998) obtained their value of  $E(B - V)$  from a detailed study of extinction of  $\sim 450$  stars within  $\pm 5^\circ$  of GX 339-4. In either case,  $E(B - V)$  agree within the errors.

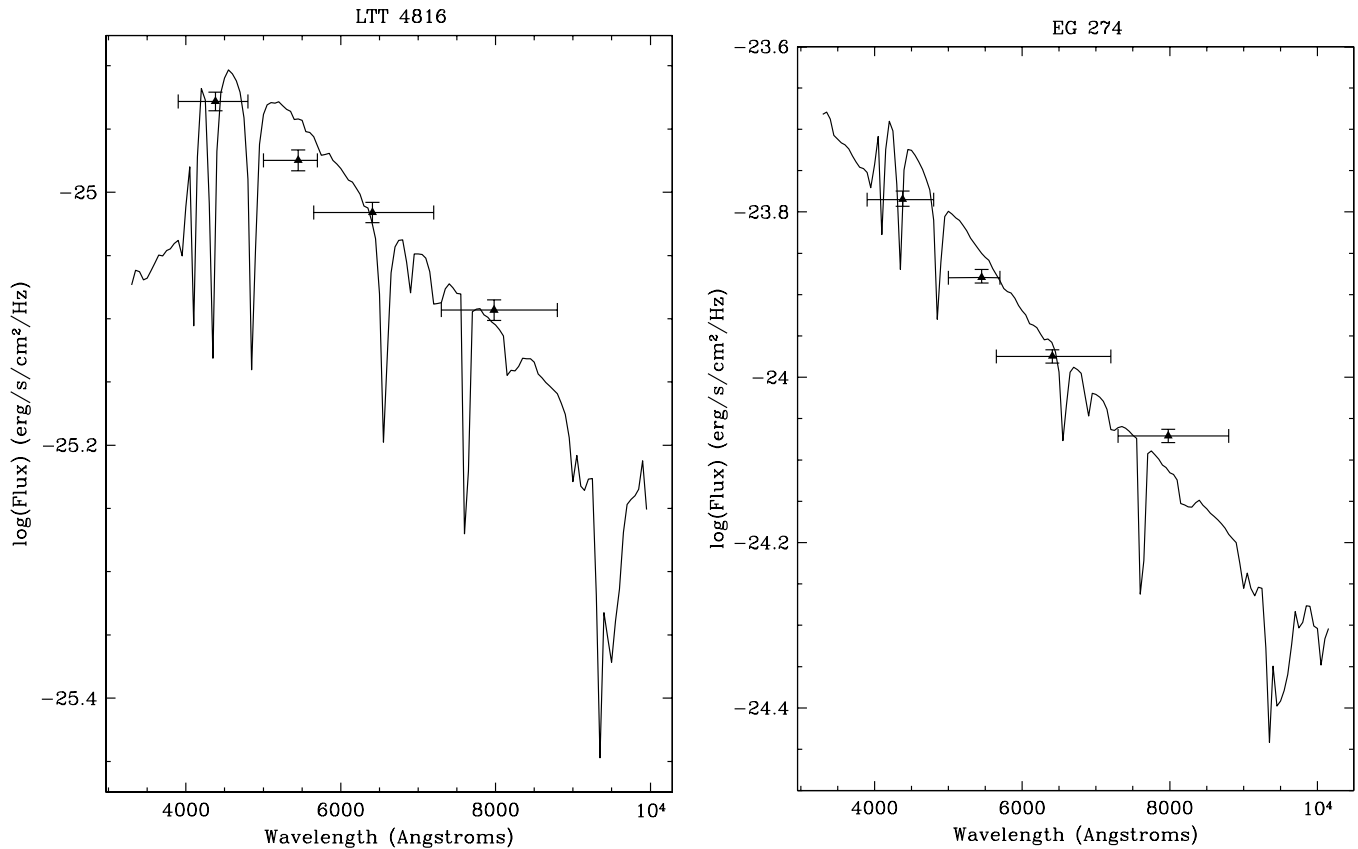
To convert the dereddened magnitudes to flux (in units of Jy) we used the following zero-point fluxes (where the zero-point flux of a given filter is that corresponding to zero magnitude):

$V_0 = 3636$  Jy,  $I_0 = 2416$  Jy (Bessell et al. 1998),  $J_0 = 1670$  Jy, and  $H_0 = 980$  Jy (Frogel et al. 1978; Elias et al. 1982). The dereddened fluxes of GX 339-4 for each waveband are given in Table 3.

We have checked our flux calibration method by obtaining observations of optical spectrophotometric standards (LTT 3218, LTT 4816, EG 131, and EG 274) and comparing our fluxes to those observed by Hamuy et al. (1992, 1994), and Bessell (1999). Observations were obtained in  $B$ ,  $V$ ,  $R$ , and  $I$  bands and our magnitudes were converted into fluxes using the method outlined in Section 2.1.1. We compared the photometric fluxes to the flux-calibrated spectrum over the relevant bandpass, and found no deviations larger than 0.05 dex, or 10% of a given flux. We show two examples (LTT 4816 and EG 274) in Figure 11.

#### 4.2. Soft-state SED

As stated in Section 3.1, our fits to the slope of the soft-state branch indicate that the flux increases more quickly at bluer wavelengths. In other words, the source gets bluer as it gets brighter. Figure 12 shows two example SEDs obtained from the soft-state branch data for  $V = 16.0$  and  $17.0$  mag. The  $J$ -,  $H$ -, and  $I$ -band data were extrapolated from the power-law fit to the correlation data shown in Figure 7. In both cases, the O/IR data lie on the same spectral slope. We determined the slope by fitting a 1 deg polynomial in log-log space using the Levenberg–Marquardt method and derived the following results:  $\alpha = 1.6 \pm 0.1$  for



**Figure 11.** Spectrophotometric standards (left) LTT 4816 and (right) EG 274. Triangles are, from left to right, SMARTS *B*, *V*, *R*, and *I* data calibrated using methods outlined in Sections 2.1.1 and 4.1. Vertical error bars represent the 0.02 mag calibration error, and horizontal error bars show the full width at half-maximum of the filter bandpass.

$V = 17$  mag;  $\alpha = 1.8 \pm 0.1$  for  $V = 16$  mag. Hence, the slopes in each case are the same, within errors. We show these fits as dotted lines in Figure 12. Also shown, as a dashed line, is the slope expected for  $F \propto \nu^{1/3}$  representing a viscously heated steady-state accretion disk. The O/IR SEDs during the soft state have spectral slopes closer to that expected for the RJ tail ( $\alpha = 2$ ). An RJ tail may be present from either the outer regions of a viscous-heated disk or an irradiated disk. Since we do not observe a spectral turnover we cannot say definitively what the temperature of the thermal source is nor what the heating mechanism is. In any case, the trend seen during the soft state in GX 339-4 with higher fluxes is consistent with a thermal source that is heated to higher temperatures.

#### 4.3. Hard-state SED

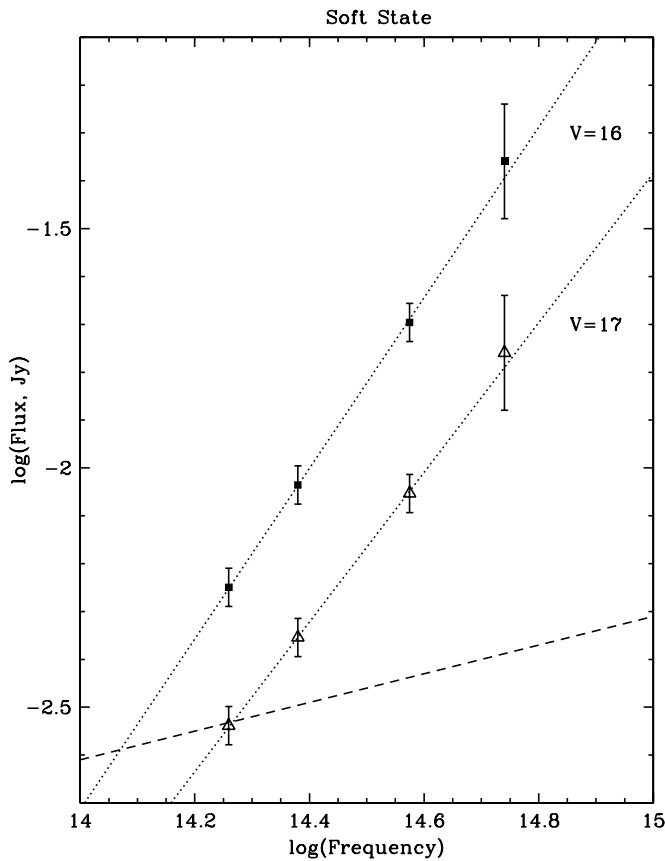
In Section 3.1 we found that the hard-state branch was best described by a broken power law where at fainter magnitudes GX 339-4 gets redder at higher fluxes while beyond the break the opposite occurs. For the former case, this requires either a non-thermal source or a thermal source that dramatically increases in size as it decreases in temperature. For the latter case, GX 339-4 is getting hotter with higher fluxes.

Figure 13 shows the evolution of the hard-state O/IR SED from the faintest *V*-band magnitude ( $V = 19.5$ ) to the brightest observed on the hard-state branch ( $V = 15$ ). At the faintest magnitude, the O/IR data lie on the same spectral slope ( $\alpha = 1.3 \pm 0.1$ ). This is shown as the solid line in Figure 13. This slope is less than the slope observed during the soft state. The spectral slope expected for a viscous-heated accretion disk ( $\alpha \sim 1/3$ ) is also shown as the dashed line. As for the soft state,

we see that the optical bands have a much steeper slope but we are unable to discern the temperature or heating mechanism of the thermal source. Nevertheless, even when GX 339-4 is at its faintest optical state we see evidence of a heated thermal source, most likely the accretion disk. In Figure 13 we have propagated the fitted slope at the faintest magnitude to the SEDs at brighter magnitudes to show that, as GX 339-4 increases in brightness, the *V* and *I* bands are consistent with this slope, indicating that *V* and *I* are most likely dominated by a thermal source that is heated to higher temperatures with increasing O/IR flux. Homan et al. (2005) also reported a stable spectral slope between the *V* and *I* bands during the hard state rise and transition to the soft state during the 2002/2003 outburst.

The near-IR bands, on the other hand, show a clear evolution in slope that decreases with increasing flux, while the flux in the near-IR bands also increases. This was also observed by Homan et al. (2005) during the 2002/2003 outburst.

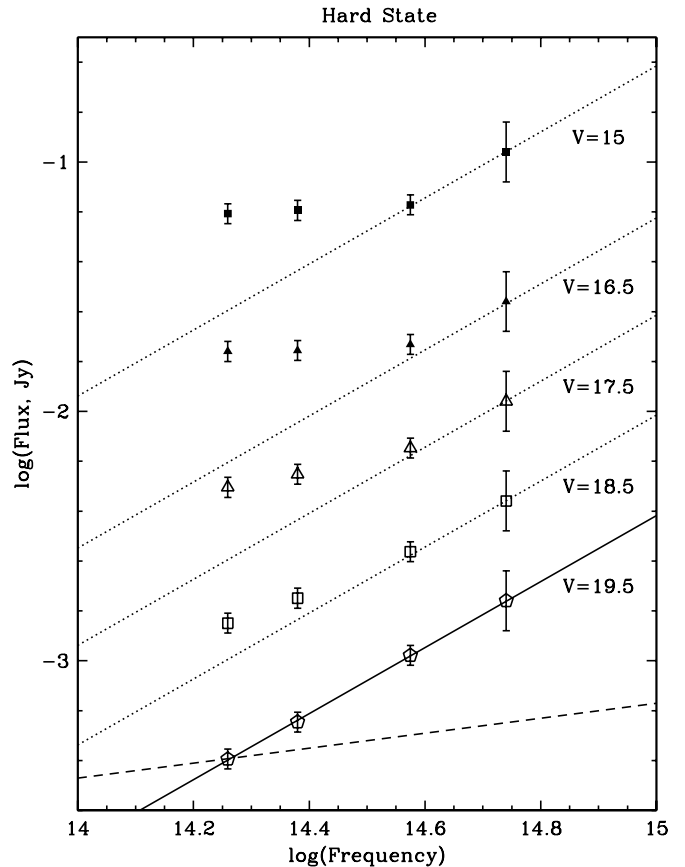
Radio emission in GX 339-4 and other XRBs has only been observed during the hard state and transitions from one state to another (Fender 2001; Corbel & Fender 2002; Corbel et al. 2003; Fender et al. 2004, 2009; Gallo et al. 2004). Presumably the radio emission is due to synchrotron emission from a jet. It has been suggested that such emission might contribute significantly at near-IR bandpasses (Corbel & Fender 2002; Nowak et al. 2005) and explain the near-infrared excess we see in our hard-state SED. We searched the literature for radio observations that were taken on the same night as the SMARTS data during the hard state. We found two cases. The first was taken on UT 2002 April 3 (Nowak et al. 2005) with ATCA at 1.38 GHz ( $4.83 \pm 0.20$  mJy) and 2.40 GHz ( $5.13 \pm 0.11$  mJy). On this date, we



**Figure 12.** Soft-state SEDs of GX 339-4 for  $V = 16$  and  $17$  mag.  $I$ -,  $J$ -, and  $H$ -band data were extrapolated from the power-law fits to the correlations shown in Figure 7. The errors are the combined photometric and reddening errors as outlined in Section 4.1. The dashed line represents the spectral slope expected for a viscous-heated accretion disk ( $F \propto \nu^{1/3}$ ). Dotted lines are the best-fit power laws to the O/IR data;  $\alpha_{\nu=16} = 1.8 \pm 0.1$ ;  $\alpha_{\nu=17} = 1.6 \pm 0.1$ .

observed GX 339-4 with a  $V$ -band magnitude of 15.73. The second case was on UT 2002 April 18 (Nowak et al. 2005) at 8640 MHz ( $13.49 \pm 0.08$  mJy) and 4800 MHz ( $12.97 \pm 0.07$  mJy). Note that these data were first reported in Gallo et al. (2004) but were re-analyzed by Nowak et al. (2005). On this date, GX 339-4 had a  $V$ -band magnitude of 15.14 mag. We show these radio data along with our O/IR hard-state SEDs for these  $V$ -band magnitudes in Figure 14. We performed power-law fits to (1) the radio,  $J$ - and  $H$ -band data and (2) radio data only, using a deg-1 polynomial and the Levenberg–Marquardt method. These fits are shown in Figure 14 as the solid and dotted lines, respectively. The best-fit slopes are for SED 1 (April 3):  $\alpha_{\text{radio/IR}} = 0.14 \pm 0.01$ ;  $\alpha_{\text{radio}} = 0.11 \pm 0.09$ ; and for SED 2 (April 18):  $\alpha_{\text{radio/IR}} = 0.14 \pm 0.01$ ;  $\alpha_{\text{radio}} = 0.14 \pm 0.01$ .

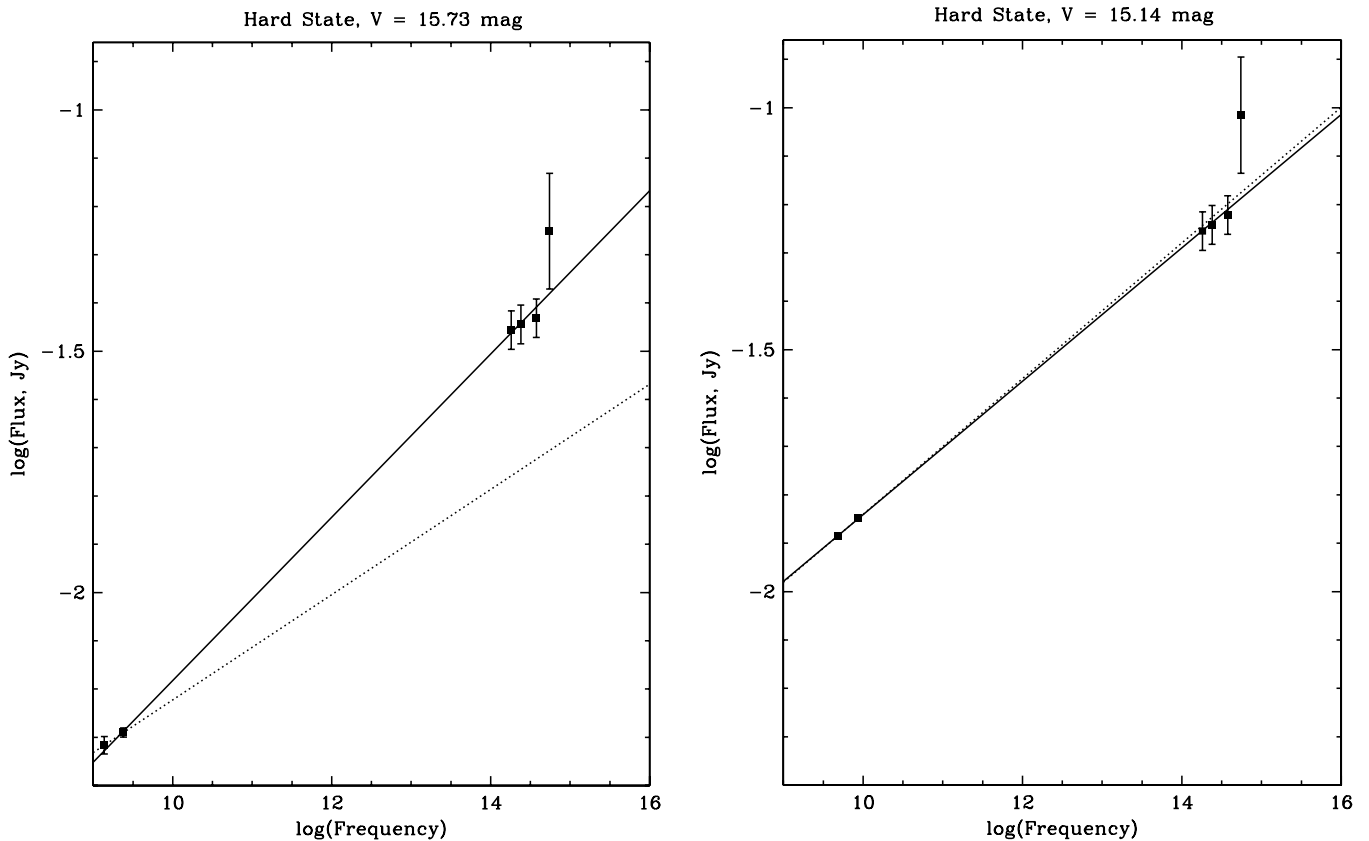
On UT 2002 April 3, the error on the radio data is sufficiently large that a simple extrapolation from the radio to the near-IR spectral may or may not be consistent with the O/IR data. A fit to the radio and near-IR data on this date has the same spectral slope as that found on UT 2002 April 18. The latter has much tighter constraints thanks to the relatively small errors on the radio data. Indeed, the spectral slopes are the same with and without the near-IR data included in the fit. Interestingly, the  $I$  band also lies on this extrapolation. Since the  $I$  band lies on the same spectral slope as the  $V$  band from the faintest to brightest magnitudes during the hard state (i.e., the  $V-I$  color is constant) then the  $I$  band is most likely the location of a break between the non-thermal and thermal SEDs. We do not observe a break



**Figure 13.** Hard-state SEDs of GX 339-4 for  $V = 19.5$ – $15.0$  mag. Dashed line represents a viscous-heated accretion disk ( $F \propto \nu^{1/3}$ ). The solid line is a best-fit power law to the O/IR data ( $\alpha = 1.3 \pm 0.1$ ) at  $V = 19.5$  mag. This line is repeated as dotted lines and shifted up to match the  $V$  band, highlighting that the  $V$  and  $I$  bands remain on the same spectral slope as GX 339-4 increases in flux. The  $J$ - and  $H$ -band spectral slope decreases with increasing brightness but the near-IR flux also increases suggesting an additional, non-thermal source becomes more dominant as GX 339-4 increases in flux.

in the non-thermal spectrum, however, we can say that the non-thermal break location must exist at frequencies greater than or equal to the  $J$  band, in agreement with Coriat et al. (2009) but contrary to Gandhi et al. (2011) (see Section 6 for further discussion of this point).

At magnitudes brighter than the break in the hard-state branch, GX 339-4 gets bluer at higher fluxes. The SED shown in Figure 13 shows that the non-thermal component is present, even at the brightest magnitudes (i.e., beyond the break). However, the near-IR flux at  $V = 15.0$  mag relative to the  $V-I$  spectral slope is less than at  $V = 16.5$  (just before the break). In other words, as the  $V-I$  fluxes increase beyond this break, the near-IR fluxes increase, but less so than at magnitudes below the break. Clearly either a physical change has occurred in the jet and/or the jet output may be reaching a saturation point as GX 339-4 gets brighter. Coriat et al. (2009) suggest that the break in the jet spectrum SED moves to higher frequencies at higher fluxes. Below the break in the hard-state branch we may be observing optically thin jet emission while above the break at higher fluxes we may be observing optically thick jet emission. We leave further investigation of this point to a future paper. In addition, changes in the thermal emission become more dominant beyond the break. Since the  $V-I$  slope is the same this simply translates to the thermal source (i.e., disk) getting hotter with increasing flux.



**Figure 14.** Power-law model fits to the hard-state SED for  $V = 15.73$  (left) and  $15.14$  (right), when simultaneous O/IR and radio data were obtained on UT 2002 April 3 and 18, respectively. The dotted line is a power-law fit to the radio data only (left:  $\alpha = 0.11 \pm 0.10$ ; right  $\alpha = 0.14 \pm 0.01$ ). The error on the radio data on 2002 April 3 is large enough such that the extrapolation may lie well above and below the O/IR data. On 2002 April 18, the radio spectrum lines up with the near-IR. The solid line is a power-law fit to the radio,  $J$  and  $H$  bands (left:  $\alpha = 0.18 \pm 0.01$ ; right  $\alpha = 0.17 \pm 0.01$ ). In this case, the radio and near-IR line up on the same spectral slope (within errors) on both dates and, therefore, originate from the same flux source, most probably jets. The  $V$  and  $I$  bands are more consistent with a thermal flux source (as shown in Figure 13).

In summary, simultaneous radio and near-IR data can be explained by a non-thermal component, and this component dominates at all but the faintest magnitudes. The optical spectral region remains dominated by a thermal flux source, most likely a heated accretion disk. Therefore, the O/IR SED needs to be explained by a combination of thermal and power-law models. We are unable to perform such a fit since the number of parameters involved would exceed the number of constraints (data) available. This highlights the need to obtain simultaneous data at other wavelengths, such as  $B$ , UV, and mid-IR in addition to the O/IR, radio, and X-ray, to further sample the shape of the SED near the O/IR and to best constrain model fits. In addition, obtaining simultaneous radio data with small errors and/or as many bandpasses as possible would strengthen model fits and place more confidence in associating near-IR flux with jet emission.

## 5. TIMING

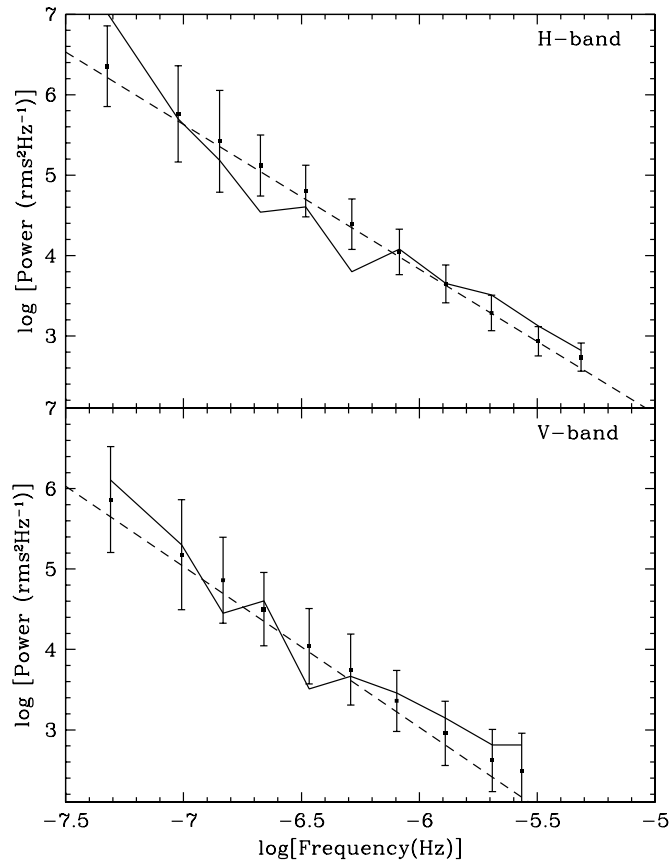
We have calculated the power spectral density (PSD) of the variability of GX 339-4 in the hard and soft states. The PSD corresponds to the power in the variability of emission as a function of timescale. The power in the units of  $\text{rms}^2 \text{Hz}^{-1}$  is given by  $P(\nu) = A\nu^\alpha$ , where  $A$  is a normalization constant,  $\nu$  is the frequency (inverse of timescale) in Hz, and  $\alpha$  is the power-law index. In a  $\log[P(\nu)]$  versus  $\log[\nu]$  plot,  $\alpha$  is defined as the slope of the power-law power spectrum. The timescales covered in the power spectra range from  $\sim 8$  months (the longest

well-sampled intervals during which any state transition did not take place) to 1–2 days (the most frequent sampling carried out for a significant interval). Hence, the power spectra range from  $10^{-7.3}$  Hz to  $10^{-5.3}$  Hz.

We divided the  $V$ - and  $H$ -band light curves into “soft” and “hard” intervals, respectively, based on the HR in the contemporaneous *RXTE*-PCA observations, as outlined in Section 3. These two bands were chosen as the  $H$ -band data shows light-curve variability most clearly during the hard state, while the same is true for the  $V$  band during the soft state. However, PSDs were calculated for each band in both the hard and soft states. The time intervals chosen were  $V$ : JD = 2,453,224.70–2,453,478.79; and  $H$ : JD = 2,454,498.88–2,454,746.55. These were the longest well-sampled intervals during which the X-ray HR stayed soft and hard, respectively. Over these time intervals, the  $V$ -band magnitude ranged between 15.9 and 17.6 mag, while the  $H$  band varied between 12.7 and 15.3 mag.

The raw PSD calculated from a light curve combines two aspects of the data set: (1) the intrinsic variation of the object and (2) the effects of the temporal sampling pattern of the observations. In order to remove the latter, we applied a Monte Carlo type algorithm based on the “Power Spectrum Response Method” (PSRESP) of Uttley et al. (2002) to determine the intrinsic PSD (and its associated uncertainties) of the light curves. Our realization of PSRESP is described in Chatterjee et al. (2008). PSRESP gives both the best-fit PSD model and a “success fraction”  $F_{\text{succ}}$  (fraction of simulated light curves that





**Figure 15.** Power spectral densities of the hard-state  $H$ -band, and soft-state  $V$ -band, light curves. The PSD of the observed data is shown by the solid jagged line, while the underlying power-law model is shown by the dashed straight line. Points with error bars correspond to the mean value of the PSD simulated from the underlying power-law model. The error bars are the standard deviation of the distribution of simulated PSDs. The broadband power spectral density is best described by a simple power law with a slope  $-1.8$  at  $H$  band, and  $-2.0$  at  $V$  band. See Table 6 for the PSD fit results for the  $V$  band during the hard state and  $H$  band during the soft state.

successfully represent the observed light curve) that indicates the goodness of fit of the model. We bin the data in 1–2 day time intervals, averaging all data points within each bin to calculate the flux. We filled empty bins through linear interpolation of the adjacent bins in order to avoid gaps that would distort the PSD. We accounted for the effects of the binning and interpolation by inserting in each of the simulated light curves the same gaps as occur in the actual data and performing the same binning and interpolation procedures.

In Figure 15 we show the PSDs of GX 339-4 and the best-fit model in  $H$  (hard state) and  $V$  bands (soft state). The PSDs show red noise behavior, i.e., there is higher amplitude variability on longer than on shorter timescales. Based on the model with the highest success fraction, the  $H$ -band PSD, and therefore the hard-state PSD, is best fit with a simple power law of slope  $-1.8^{+0.3}_{-0.7}$ , for which the success fraction is 0.56. That for the  $V$ -band (soft state) PSD is  $-2.0^{+0.3}_{-0.5}$  with success fraction 0.89. During the fitting, we varied the slope from  $-1.0$  to  $-3.0$  in steps of 0.1. The uncertainties of the slopes represent the range of slopes beyond which the success fraction goes below half of the maximum value. The rejection confidence, equal to one minus the success fraction, is much less than 0.9 in both cases. This implies that a simple power-law model provides an acceptable fit to the PSD at both wavebands. The PSD for the  $V$  band during

**Table 6**  
A Summary of the Best-fit Power-law Parameters to the Power Spectral Densities of GX 339-4 during the Hard and Soft States

Filter/X-Ray State	Start JD (−2,450,000.0)	End JD (−2,450,000.0)	Slope ( $\alpha$ )
$V$ soft state	3224.70050	3478.79434	$-2.0^{+0.3}_{-0.5}$
$V$ hard state	4498.88162	4746.54995	$-1.8^{+0.3}_{-0.5}$
$H$ soft state	3224.70050	3478.79434	$-1.7^{+0.2}_{-0.6}$
$H$ hard state	4498.88162	4746.54995	$-1.8^{+0.3}_{-0.7}$

**Note.** Errors are  $1\sigma$ .

the hard state, and  $H$  band during the soft state, were also well-fitted by a simple power-law model with slopes consistent with those described here within uncertainties. A summary of our PSD fits are given in Table 6. We see no break in the power spectra, nor evidence of any QPOs, at few days to few months timescales.

The standard deviations of the light curves are 7.8 mJy ( $V$  band) and 3.6 mJy ( $H$  band). The mean fluxes are 27.6 mJy ( $V$  band) and 6.2 mJy ( $H$  band). The uncertainties are negligible compared to the variation. To meaningfully compare the fluctuation of two light curves, we need to (1) normalize the standard deviation by the mean of the light curves and (2) account for the contribution of the observational uncertainties, as opposed to the intrinsic fluctuations, to the observed variability of the light curves. Here, we calculated the “excess variance” normalized by the square of the mean flux, as a measure of the variability in the  $V$ - and  $H$ -band data. It is defined as

$$F_{\text{var}} = \sqrt{\frac{S^2 - \sigma_{\text{err}}^2}{\bar{x}^2}}, \quad (1)$$

where  $S$  is the variance,  $\sigma_{\text{err}}$  is the observational uncertainty, and  $\bar{x}$  is the mean of the data (Nandra et al. 1997; Edelson et al. 2002; Vaughan et al. 2003). We find that the values of  $F_{\text{var}}$  of the  $V$ - and  $H$ -band variability for the entire data set are 0.28 and 0.58, respectively, i.e., of the same order of magnitude with the  $H$  band having a higher value. This is consistent with the slightly larger amplitude of power in the  $H$  compared to the  $V$  band as seen in Figure 15.

The timescales covered in Casella et al. (2010) and Gandhi et al. (2010) are from few minutes to 0.1 s (0.003 Hz to 10 Hz). Therefore, there is a large gap between the frequency range covered in those papers and that presented here. The slope at the lowest frequency end of the power spectrum shown in those work is significantly flatter than the slope determined here for either of the wave bands. But the data used in this paper are insufficient to determine at which frequency the flattening takes place.

Well-sampled light curves covering minutes to days timescales can be used to fill-up the gap in the frequency range and check the broadband nature of the power spectrum from months to sub-second timescales. This may indicate whether the slope changes gradually over a range of timescales, or it changes abruptly and in the latter case, the numerical value of that characteristic timescale. This will be carried out in a future paper.

## 6. DISCUSSION AND CONCLUSIONS

We have presented a comprehensive optical and near-infrared light curve of GX 339-4 between 2002 and 2010, inclusive. The

light curve shows that GX 339-4 is continuously in outburst (that is, the companion star never dominates the O/IR flux) but experiences significant changes in luminosity and spectral state.

When GX 339-4 transitions from the hard state to the soft state changes in the near-IR fluxes are much greater than in the optical fluxes. This can be understood if the near-IR flux is dominated by non-thermal emission from, say, a jet. The change in near-IR flux is significantly greater during the hard-to-soft transition than the soft-to-hard transition (i.e., rebrightening event) suggesting that non-thermal emission is more dominant during the hard state before the hard-to-soft transition than it is after the soft-to-hard transition.

We have seen three examples of rebrightening events during 2003, 2005, and 2007. However, the 2007 event was markedly different to the others in that GX 339-4 did not return to quiescence after the peak was reached, and remained in the hard state during 2008 and 2009 during which it fluctuated significantly in O/IR fluxes. Rebrightening events have been observed in the O/IR during the outbursts of 4U1543-47 (Buxton & Bailyn 2004) and XTE J1550-564 (Jain et al. 2001), and in optical/X-ray fluxes in XTE J1752-223 (Russell et al. 2012). The shape of the rebrightening events in all three systems are remarkably similar in that they exhibit a fast-rise–exponential-decay profile. The increase in O/IR occurs soon after the source transitions from the soft to the hard X-ray state (via the intermediate state in 4U 1543-47; Kalemci et al. 2005) along with a resurgence in radio emission (Corbel et al. 2001; Jain et al. 2001; Kalemci et al. 2005). The source then decays back to a magnitude where it remains steady until the next outburst (except for the 2007 event in GX 339-4). Since (1) these events occur after transition into the hard state, (2) the flux becomes redder with increasing flux, and (3) radio emission is detected near the peak of the O/IR maximum, it seems likely that rebrightening events are associated with the reappearance of collimated jets. The rebrightening events observed in GX 339-4 have differences between their durations and the final magnitudes reached after the peak has faded. Only one rebrightening event has been observed in 4U 1543-47, XTE J1550-564, and XTE J1752-223 so we cannot comment on any differences that may occur from one outburst to the next in these systems. However, the duration of the rebrightening events in other BHXBs are significantly different to that of GX 339-4:  $\sim 60$  days in XTE J1550-564,  $\sim 35$  days in 4U 1543-47, and  $\sim 40$  days in XTE J1752-223. These differences may provide clues as to how much material has been either accreted by the black hole or ejected via the jets. Research is now starting to focus on how much jets contribute to the overall flux of the system at high and low luminosities (e.g., Russell et al. 2010; Soleri & Fender 2011) and decomposition of the disk/jet fluxes (e.g., Maitra et al. 2009; Russell et al. 2010, 2011, 2012; T. Dingler et al., submitted). For GX 339-4, we are now able to observe multiple rebrightening events for one BHXB. The differences we have observed in the rebrightening events may provide interesting and crucial limits to theoretical models, and we may now begin to study whether these differences are correlated with other properties of the outbursts.

The HID of GX 339-4 is broadly similar for all outbursts except in 2006 when GX 339-4 failed to travel around the HID loop. Based on an empirical relationship between the hard X-ray peak flux and outburst waiting time, Yu et al. (2007) and Wu et al. (2010) suggest that, assuming that the hard X-ray flux produced is directly related to the amount of mass accreted from the disk, there exists a disk mass limit (as yet unknown) that must be

exceeded in order for GX 339-4 to generate a hard X-ray outburst above  $\sim 0.2$  Crab. In 2006, GX 339-4 only reached  $\sim 0.1$  Crab, below this limit. Future studies may shed light on what this limit is physically and quantitatively, and how it is related to the HID. GX 339-4 experienced an outburst in 2010 that was above this limit. However, it occurred somewhat later and had a lower peak flux ( $\sim 0.4$  Crab) than that predicted by Wu et al. (2010). The other outbursts move around the loop counterclockwise, however there are some differences (1) between the upper and lower horizontal branches, especially during 2004/2005; (2) the extent to which GX 339-4 reaches the far left part of the diagram; and (3) the amount of time spent in each branch of the HID. We may now be close to a position that allows us to start studying correlations between the various properties in the HID (X-ray) and the O/IR outbursts.

We have found strong correlations within the O/IR with two branches corresponding to either the hard or soft X-ray states. These correlations are similar to those seen between O/IR and X-ray flux (Coriat et al. 2009) with distinct branches corresponding to the hard and soft states. With the correlations so clearly defined, particularly between  $V$  and  $H$  bands, it is possible to determine whether GX 339-4 resides in the hard or soft X-ray state from the O/IR data alone. We have found the soft-state branch is best described by a single power law while the hard-state branch is best represented by a broken power law. Coriat et al. (2009) also found a break in their hard-state branch, but only in the  $H$ -band/X-ray correlation (not in the  $V$ -band/X-ray correlation) and at significantly lower  $H$ -band fluxes than that observed in this work. Their break occurs just before the hard-state branch bifurcates whereas we observe a break near the brightest end of the hard-state branch. In future work, we will explore the difference in break location and how this break may or may not relate to the properties of the jet spectrum.

In this paper we showed the paths traced in the O/IR correlation space when the hard-to-soft and soft-to-hard state transitions occurred. For the former, we showed two well-sampled examples (2002, 2010) and that this transition occurs very quickly ( $\sim 4$  days). The paths taken in these two cases were very similar and ended the transition in the soft-state branch at around the same magnitude:  $V \sim 16.5$  mag. For the latter case we showed three cases. In two (2003 and 2005) we saw very similar behavior where the transition ended at the faintest end of the hard-state branch. In the third (2007), however, it moved up and down the hard-state branch (never to the faintest end) where it remained during 2008/2009. In future observations of GX 339-4 we will closely monitor the state transitions in the O/IR to see whether the paths traced in the correlation space vary or otherwise with each outburst. In particular, we will see if the rise during the hard state from the faintest optical state to the brightest follows the same path as the decay phase at the faintest end of the hard-state branch. It will also be interesting to see whether the location of the soft-branch merge remains the same in future hard-to-soft transitions.

The soft-state O/IR SED is consistent with a thermal flux source that is most likely a heated accretion disk. We were unable to discern whether this source is irradiated or not. The spectral slope between  $V$  and  $I$  bands during the hard state is  $\alpha = 1.3 \pm 0.1$ . For the soft state  $\alpha = 1.6 - 1.8 \pm 0.1$ , slightly higher than the hard-state optical slope, and consistent with those found by Hynes (2005) and Zurita Heras et al. (2011) in other BHXBs ( $0.5 \lesssim \alpha \lesssim 1.5$ ). Coriat et al. (2009) measured the spectral slope between the  $H$ - and  $V$ -band data to be  $1 \leq \alpha \leq 2$  during the soft X-ray state and found it to be positively correlated

with  $V$ -band flux. We also see the O/IR slope increasing with increasing brightness during the soft state, however, they are consistent within our errors.

The hard-state SED shows evidence of both a non-thermal and thermal component. A power-law spectrum extrapolated from the radio data in the hard-state SED during the 2002 outburst is consistent with the near-infrared data but not the optical. The slopes derived for the radio/near-IR spectrum ( $\alpha = 0.14 - 0.17 \pm 0.1$ ) are consistent with other studies (Corbel & Fender 2002; Homan et al. 2005). On 2002 April 18 the errors on the radio data are sufficiently small to allow us to place tight constraints on the non-thermal power-law slope. We do not see evidence of a non-thermal power-law break at frequencies lower than the  $J$  band, suggesting that the break is located at frequencies greater than or equal to the  $J$  band. This is in agreement with Coriat et al. (2009) but contrary to what was observed by Gandhi et al. (2011). During 2010 when GX 339-4 was once again very bright during the hard state ( $V = 14.74$  mag) Gandhi et al. (2011) found the power-law break to be located in the mid-IR. They fit a power law to the radio-W4 data with a slope of  $+0.29 \pm 0.02$ , significantly higher than slopes found in this paper and others. Since we do not have simultaneous mid-IR data for the 2002 outburst, we cannot comment on what differences or similarities may exist in this spectral region. However, if one considered just the 2010 radio data alone, the error bar on the 9 GHz is sufficiently large that the radio spectrum could lie well below the mid-IR data and line up with the near-IR instead. As Gandhi et al. also note, fitting single power laws in the radio-to-near-IR spectral region may be an oversimplification. Using sophisticated theoretical models, such as those shown in Markoff et al. (2005), Homan et al. (2005), and Maitra et al. (2009) may be necessary to explain the connection between the radio/mid-IR/near-IR data.

Coriat et al. (2009) used as yet unpublished radio and our SMARTS O/IR data to construct an SED when GX 339-4 was transitioning from the soft state to the hard state (UT 2005 April 21, MJD 53482). The O/IR fluxes lie well below the radio spectrum of slope  $\alpha = 0.13 \pm 0.02$ . Eleven days later (MJD 53493), the radio spectrum lines up with the near-IR with a slope  $\alpha = 0.17 \pm 0.01$ . At this time, GX 339-4 reached its peak in the IR flux while the radio flux was declining. Nine days later (MJD 53502) the radio flux decreased further while the O/IR flux decreased slightly and the near-IR was consistent with a radio spectrum of slope  $\alpha = 0.21 \pm 0.02$ . Hence the power-law spectrum was significantly different during a soft-to-hard state transition than during the hard state during a rebrightening phase. Note this was at fainter O/IR mags than our SEDs in Figure 14.

To model the hard-state O/IR SED would require a greater number of parameters than the data we have at hand can constrain. As noted above, more sophisticated model fits of the hard-state SED have been performed by Markoff et al. (2005), Homan et al. (2005), and Maitra et al. (2009). Markoff et al. (2005) included data from the radio and X-ray regimes, and used quasi-simultaneous O/IR data obtained in 1981 by Motch et al. (1981) and Pederson (1981). Their conclusions were that the O/IR could be explained by a combination of a multi-temperature Shakura & Sunyaev (1973) disk and a single-temperature blackbody representing the irradiation of the outer accretion disk by the jet, with the IR dominated by flux from a jet. Homan et al. (2005) applied models to simultaneous SMARTS O/IR ( $V$ ,  $I$ , and  $H$  bands), radio, and X-ray data taken during the

2002 outburst. Two cases were considered: a pure-jet model (that is, no contribution to the optical by a disk), and one where the  $V$ - and  $I$ -band fluxes originate from a multicolor thermal disk and the  $I$  to  $H$  bands from a jet. In both cases, there were difficulties in fitting the models to the steep  $V$ -to- $I$  band slope. We note that in Homan et al. (2005) the  $I$  band was not dereddened correctly. In our paper we have corrected this and, as a result, we would see the  $I$  band moves up in the O/IR SED, producing a shallower slope between the  $V$  and  $I$  bands that would ease any difficulties Homan et al. had in fitting the models. Maitra et al. (2009) also used the same O/IR data as Homan et al. (2005) and concluded that their radio/O/IR/X-ray SED could be entirely explained by a jet-only model. In light of the  $I$ -band dereddening correction, we strongly encourage a re-analysis of such model fitting. In addition Homan et al. (2005) and Maitra et al. (2009) used only three points ( $V$ ,  $I$ , and  $H$  bands; Homan et al. 2005), whereas the 1981 data set used by Markoff et al. (2005) included nine data points from  $B$  to the near-IR. Had data at shorter wavelengths been available, Homan et al. and Maitra et al. may have seen evidence for higher flux at shorter wavelengths (Cadolle Bel et al. 2011 see a rise in flux from optical to UV wavelengths) which may pose problems for a jet-only model fit.

These results further highlight the importance of obtaining simultaneous radio data with the smallest errors and/or as many simultaneous bands as possible to place tight constraints on the radio spectral slope. Sampling the optical/IR spectral region must now include the mid-IR and UV to sufficiently constrain theoretical models. Only then can we begin to have confidence in the location of the power-law break and how this varies over the duration of an outburst (i.e., with varying X-ray flux).

Timing analysis during the soft ( $V$  band) and hard states ( $H$  band) shows that the variability of GX 339-4 is consistent with a simple power law over timescales  $\sim 4$ –230 days. We see no evidence of characteristic timescales (such as power-law breaks or QPOs). Other studies that have observed QPOs during the hard (Motch et al. 1985; Gandhi 2009; Gandhi et al. 2010) and soft (Motch et al. 1985) state have been for timescales much less than what we have observed here ( $\leq 250$  s). In future work we will obtain data with higher temporal resolution in an attempt to bridge the timescale-gap between 250 s and 4 days during both hard and soft X-ray states, and construct PSDs, cross-, and autocorrelation functions to fully explore variability timescales in GX 339-4 to see any evidence of characteristic timescale(s) related to accretion processes.

We will continue to monitor GX 339-4 in the O/IR with SMARTS for the foreseeable future, including data at  $B$ ,  $V$ ,  $I$ ,  $J$ ,  $H$ , and  $K$  bands, making it immediately public via the Web<sup>5</sup> for use by the general astronomical community.

We are grateful to our SMARTS ANDICAM observers, Juan Espinoza, Alberto Miranda, and David Gonzalez, and to Suzanne Tourtellotte for reducing the optical data.

M.M.B., C.D.B., H.C., and R.C. are supported by NSF/AST grants 0407063 and 070707 to C.D.B.

J.A.T. acknowledges partial support from NASA under grant number NNX09AG46G.

E.K. and T.D. acknowledge TUBITAK grant 106T570, Turkish Academy of Sciences, and the EU FP7, ITN 215212 “Black Hole Universe.”

This research has made use of the NASA/IPAC Infrared Science Archive, which is operated by the Jet Propulsion

<sup>5</sup> <http://www.astro.yale.edu/buxton/GX339/>

Laboratory, California Institute of Technology, under contract with the National Aeronautics and Space Administration.

*Facility:* CTIO:1.3m

## REFERENCES

- Bailyn, C. D., & Ferrara, L. 2004, *ATel*, **323**
- Belloni, T. M. 2010, *States and Transitions in Black-Hole Binaries (Lecture Notes in Physics, Vol. 794; Berlin: Springer)*, **53**
- Belloni, T., Homan, J., Casella, P., et al. 2005, *A&A*, **440**, 207
- Bessell, M. S. 1999, *PASP*, **111**, 1426
- Bessell, M. S., Castelli, F., & Plez, B. 1998, *A&A*, **333**, 231
- Brocksopp, C., Jonker, P. G., Maitra, D., et al. 2010, *MNRAS*, **404**, 908
- Buxton, M., & Bailyn, C. D. 2004, *ApJ*, **615**, 880
- Buxton, M., & Vennes, S. 2003, *MNRAS*, **342**, 105
- Cadolle, M., Rodriguez, J., D'Avanzo, P., et al. 2011, *A&A*, **534**, 119
- Casella, P., Maccarone, T. J., O'Brien, K., et al. 2010, *MNRAS*, **404**, L21
- Cannizzo, J. K., Chen, W., & Livio, M. 1995, *ApJ*, **454**, 880
- Cannizzo, J. K., & Mattei, J. A. 1998, *ApJ*, **505**, 344
- Cardelli, J. A., Clayton, G. C., & Mathis, J. S. 1989, *ApJ*, **345**, 245
- Chatterjee, R., Jorstad, S. G., Marscher, A. P., et al. 2008, *ApJ*, **689**, 79
- Chaty, S., Dubus, G., & Raichoor, A. 2011, *A&A*, **529**, A3
- Chen, W., Shrader, C. R., & Livio, M. 1997, *ApJ*, **491**, 312
- Corbel, S., Kaaret, P., Jain, R. K., et al. 2001, *ApJ*, **554**, 43
- Corbel, S., & Fender, R. P. 2002, *ApJ*, **573**, 35
- Corbel, S., Fender, R. P., Tzioumis, A. K., et al. 2002, *Science*, **298**, 196
- Corbel, S., Nowak, M. A., Fender, R. P., Tzioumis, A. K., & Markoff, S. 2003, *A&A*, **400**, 1007
- Corbet, R. H. D., Pearlman, A. B., Buxton, M., & Levine, A. M. 2010, *ApJ*, **719**, 979
- Coriat, M., Corbel, S., Buxton, M. M., et al. 2009, *MNRAS*, **400**, 123
- DePoy, D. L., Atwood, B., Belville, S. R., et al. 2003, *Proc. SPIE*, **4841**, 827
- Dubus, G., Jameury, J.-M., & Lasota, J.-P. 2001, *A&A*, **373**, 251
- Dubus, G., Lasota, J.-P., Hameury, J.-M., & Charles, P. 1999, *MNRAS*, **303**, 139
- Edelson, R., Turner, T. J., Pounds, K., et al. 2002, *ApJ*, **568**, 610
- Elias, J. H., Frogel, J. A., Matthews, K., & Neugebauer, G. 1982, *AJ*, **87**, 1029
- Fender, R. P. 2001, *MNRAS*, **322**, 31
- Fender, R. P. 2006, in *Compact Stellar X-ray Sources, Jets from X-ray Binaries*, ed. W. H. G. Lewin & M. van der Klis (Cambridge: Cambridge Univ. Press), 381
- Fender, R. P., Belloni, T. M., & Gallo, E. 2004, *MNRAS*, **355**, 1105
- Fender, R. P., Belloni, T. M., & Gallo, E. 2005, *Ap&SS*, **300**, 1
- Fender, R. P., Homan, J., & Belloni, T. M. 2009, *MNRAS*, **396**, 1370
- Fitzpatrick, E. L. 1999, *PASP*, **111**, 63
- Frogel, J. A., Persson, S. E., Aaronson, M., & Matthews, K. 1978, *ApJ*, **220**, 75
- Gallo, E., Corbel, S., Fender, R. P., Maccarone, T. J., & Tzioumis, A. K. 2004, *MNRAS*, **347**, L52
- Gandhi, P. 2009, *ApJ*, **697**, L167
- Gandhi, P., Blain, A. W., Russell, D. M., et al. 2011, *ApJ*, **740**, L13
- Gandhi, P., Dhillon, V. S., Durant, M., et al. 2010, *MNRAS*, **407**, 2166
- Gandhi, P., Makishima, K., Durant, M., et al. 2008, *MNRAS*, **390**, L29
- Hamuy, M., Suntzeff, N. B., Heathcote, S. R., et al. 1994, *PASP*, **106**, 566
- Hamuy, M., Walker, A. R., Suntzeff, N. B., et al. 1992, *PASP*, **104**, 533
- Homan, J., & Belloni, T. 2005, *Ap&SS*, **300**, 107
- Homan, J., Buxton, M., Markoff, S., et al. 2005, *ApJ*, **624**, 295
- Hynes, R. I. 2005, *ApJ*, **623**, 1026
- Hynes, R. I., Haswell, C. A., Chaty, S., Shrader, C. R., & Cui, W. 2002, *MNRAS*, **331**, 169
- Hynes, R. I., Steeghs, D., Casares, J., Charles, P. A., & O'Brien, K. 2003, *ApJ*, **583**, L95
- Hynes, R. I., Robinson, E. L., Pearson, K. J., et al. 2006, *ApJ*, **651**, 401
- Jain, R. K., Bailyn, C. D., Orosz, J. A., McClintock, J. E., & Remillard, R. A. 2001, *ApJ*, **554**, L181
- Kalemci, E., Tomsick, J. A., Buxton, M. M., et al. 2005, *ApJ*, **622**, 508
- Kong, A. K. H., Kuulkers, E., Charles, P. A., & Homer, L. 2000, *MNRAS*, **312**, L49
- Landolt, A. U. 1992, *AJ*, **104**, 340L
- Lasota, J.-P. 2001, *New Astron.*, **45**, 449
- Maitra, D., & Bailyn, C. D. 2008, *ApJ*, **688**, 537
- Maitra, D., Markoff, S., Brocksopp, C., et al. 2009, *MNRAS*, **398**, 1638
- Markoff, S., Nowak, M., Corbel, S., Fender, R., & Falcke, H. 2005, *A&A*, **397**, 645
- Migliari, S., Tomsick, J. A., Markoff, S., et al. 2007, *ApJ*, **670**, 610
- Miyamoto, S., Kitamoto, S., Hayashida, K., & Egoshi, W. 1995, *ApJ*, **442**, L13
- Motch, C., Ilovaisky, S. A., & Chevalier, C. 1981, *IAU Circ.*, **3609**
- Motch, C., Ilovaisky, S. A., Chevalier, C., & Angebault, P. 1985, *Space Sci. Rev.*, **40**, 219
- Nandra, K., George, I. M., Mushotzky, R. F., Turner, T. J., & Yaqoob, T. 1997, *ApJ*, **476**, 70
- Nowak, M. 2005, *ApJ*, **626**, 1006
- O'Donnell, J. E. 1994, *ApJ*, **422**, 158
- Orosz, J. A., Steeghs, D., McClintock, J. E., et al. 2009, *ApJ*, **697**, 573
- Pederson, H. 1981, *IAU Circ.*, **3613**
- Persson, S. E., Murphy, D. C., Krzeminski, W., Roth, M., & Rieke, M. J. 1998, *AJ*, **116**, 2475
- Predehl, P., & Schmitt, J. H. M. M. 1995, *A&A*, **293**, 889
- Rawls, M. L., Orosz, J. A., McClintock, J. E., et al. 2011, *ApJ*, **730**, 25
- Remillard, R. A., & McClintock, J. E. 2006, *ARA&A*, **44**, 49
- Russell, D. M., Curran, P. A., Muñoz-Darias, T., et al. 2012, *MNRAS*, **419**, 1740
- Russell, D. M., Fender, R. P., Hynes, R. I., et al. 2006, *MNRAS*, **371**, 1334
- Russell, D. M., Maitra, D., Dunn, R. J. H., & Fender, R. P. 2011, *MNRAS*, **416**, 2311
- Russell, D. M., Maitra, D., Dunn, R. J. H., & Markoff, S. 2010, *MNRAS*, **405**, 1759
- Shahbaz, T., Fender, R., & Charles, P. A. 2001, *A&A*, **376**, L17
- Shakura, N. I., & Sunyaev, R. A. 1973, *A&A*, **24**, 337
- Soleri, P., & Fender, R. 2011, *MNRAS*, **413**, 2269
- Subasavage, J. P., Bailyn, C. D., Smith, R. C., et al. 2010, *Proc. SPIE*, **7737**, 31
- Tomsick, J. A., Corbel, S., Goldwurm, A., & Kaaret, P. 2005, *ApJ*, **630**, 413
- Tomsick, J. A., Kalemci, E., Kaaret, P., et al. 2008, *ApJ*, **680**, 593
- Uttley, P., McHardy, I. M., & Papadakis, I. E. 2002, *MNRAS*, **332**, 231
- Vaughan, S., Edelson, R., Warwick, R. S., & Uttley, P. 2003, *MNRAS*, **345**, 1271
- Wu, Y. X., Yu, W., Yan, Z., Sun, L., & Li, T. P. 2010, *A&A*, **512**, 32
- Yu, W., Lamb, F. K., Fender, R., & van der Klis, M. 2007, *ApJ*, **663**, 1309
- Zdziarski, A. A., Poutanen, J., Mikolajewska, J., et al. 1998, *MNRAS*, **301**, 435
- Zurita Heras, J. A., Chaty, S., Cadolle Bel, M., & Prat, L. 2011, *MNRAS*, **413**, 235