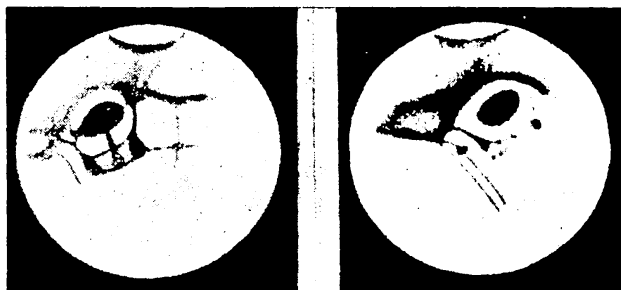


The accompanying cut reproduces two of the plates there given. The left hand drawing was made by Mr. CAMPBELL, August 14, at 11^h 15^m P. s. t. *Ganges* was at that time single. The right hand drawing was made by Mr. HUSSEY, August 17, at 11^h 15^m P. s. t., and it shows *Ganges* to be doubled. This was also shown by entirely independent drawings by Messrs. SCHAEBERLE and CAMPBELL on the same night.



The LICK Observatory intends to print an octavo volume at some future time, giving all the observations of *Mars* made here in 1892, with a selection of the best drawings. The present number of the *Publications* contains four plates already made for the volume in question. Plate S¹ was made from drawings by Mr. SCHAEBERLE. Plates H¹, H², H³ were made from drawings by Mr. HUSSEY. When the pictures of Dr. BARNARD and of Mr. CAMPBELL are added to those now given, some idea of the number and excellence of the drawings made here can be had. A very great number of micrometer measures were obtained by the different observers during the summer. Considering the very low altitude of the planet, the number and the detail of the pictures is remarkable. The planet was almost continuously under observation for several months. I think there is no doubt that no other series of observations of *Mars* of anything like equal importance were obtained elsewhere.

E. S. H.

NOTICE REGARDING ASTRONOMICAL PHOTOGRAPHS.

A paragraph in the *Mon. Not.*, R. A. S., Vol. 53, p. 350, states that arrangements have been made by means of which any person can procure copies of photographs, etc, in the possession of the Royal Astronomical Society by application to Messrs. EYRE and SPOTTISWOOD, East Harding Street, Fetter Lane, London E. C., at a fair price. This very liberal provision will enable any of our members to provide themselves with astronomical photographs

selected from the large collections of the Society; and in particular with copies of the most important of the negatives made at the LICK Observatory, which have been regularly deposited there. It is to be hoped that Messrs. EYRE and SPOTTISWOOD will issue a priced catalogue of the pictures they are prepared to furnish. I remind those of our members who live in California, that I. W. TABER & Co. of San Francisco, have many excellent negatives made here, duplicates of which they will furnish.

E. S. H.

MEAN BAROMETER AND THERMOMETER AT MOUNT HAMILTON BY MONTHS.—1880-1892.

Month.	Mean Barometer.	Mean Thermometer.
		°
January	25.747 (9)	40.2 (9)
February720 (9)	40.4 (9)
March712 (8)	44.7 (9)
April724 (8)	46.1 (9)
May715 (8)	54.8 (9)
June749 (8)	60.6 (9)
July752 (9)	69.9 (10)
August779 (10)	70.8 (10)
September763 (10)	64.7 (11)
October752 (11)	55.9 (11)
November789 (10)	48.8 (10)
December748 (10)	41.7 (10)
Means	25.746	53.2

C. D. PERRINE.



W.J. Hussey.

1892 JULY 25th 12^h 45^m P.M.
 $\lambda = 10^\circ \quad \mu = 14^\circ$



W.J. Hussey.

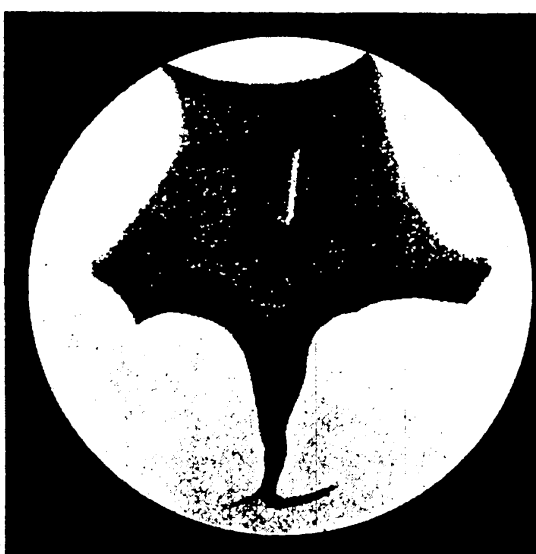
1892 AUGUST 20th 12^h 50^m
 $\lambda = 76^\circ \quad \mu = 12^\circ$



W.J. Hussey.

1892 JULY 25th

W.J. Hussey.



W.J. Hussey.

1892 JULY 25th 11^h 15^m

$\lambda = 37^\circ \quad \mu = 14^\circ$

PLATE H³.—DRAWINGS OF MARS, 1892.

By Professor HUSSEY.